

# TS Kompakt

## Scissor arm door closer

### Key Figures

Lifetime per unit: 10 years  
Weight per unit: 1.3 kg  
Production location: Suzhou, China

### Production standards

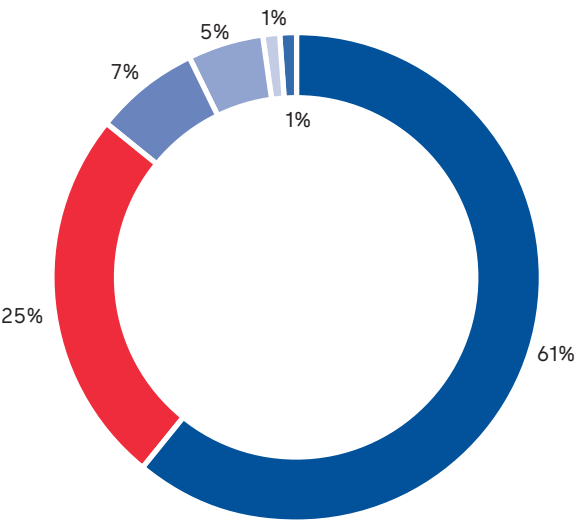
Quality	Environmental	Occupational Health & Safety	Energy	Produced with green electricity
ISO 9001 certified	ISO 14001 certified		ISO 50001 certified	

### Product declarations

Environmental Product Declaration	Health Product Declaration	Building Product Declaration	SuPIM Data Sheet
✓			

### Material used (%)

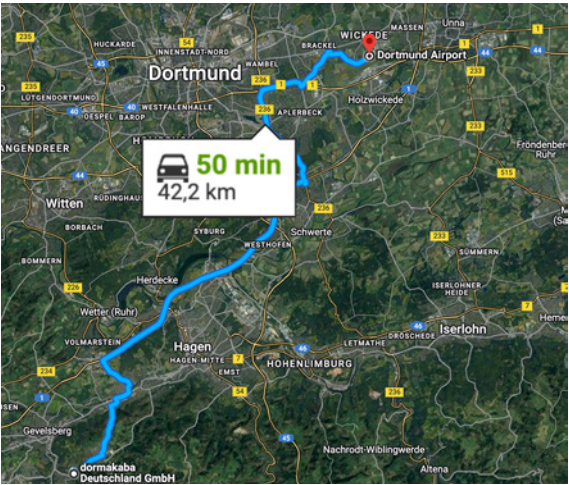
Steel Aluminium Lubricant Packaging  
Plastic Paper



<sup>1</sup> Carbon dioxide equivalent (CO<sub>2</sub>e) is the universal unit of measurement to indicate the global warming potential (GWP) of each of the six greenhouse gases, expressed in terms of the GWP of one unit of carbon dioxide. It is used to evaluate releasing (or avoiding releasing) different greenhouse gases against a common basis.

### The GWP<sup>1</sup> across the life cycle is 9 kg CO<sub>2</sub>e

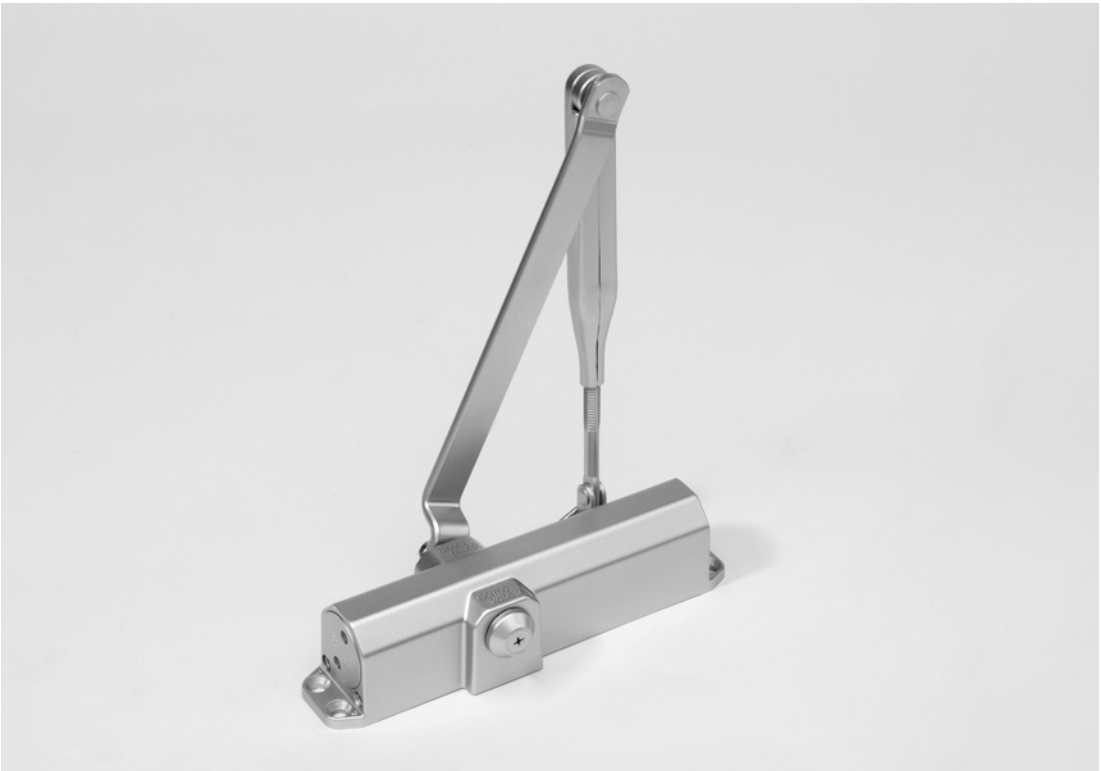
This is similar to the CO<sub>2</sub> produced from a road trip with a diesel mid-range car from Ennepetal to Dortmund airport



Scan the QR code or click here for more information about sustainability



Scan the QR code or click here for more information about our sustainability product declaration.



### Description

With the door closer TS Kompakt, dormakaba has developed a door closer which can be universally used on all common door types. It is particularly quick and easy to install – and does not require a mounting backplate. Changes in templating allow easy selection of the closing force to suit various door sizes.

### Total Global Warming Potential per life cycle stage (kg CO<sub>2</sub>e)

