



Make

HAUSER & WIRTH
SOMERSET

Antipode

6 March – 24 April 2021

Antipode

6 March – 24 April 2021

‘Vessels and containers are an innate method of communication. They convey a narrative of gathering, holding and storing. Not only do they surround us in our daily lives, but they also shape our perception of the world and the division between the inside and out.’

—Adi Toch

This spring, Make Hauser & Wirth Somerset unites four distinctive artist-makers in a group exhibition, featuring Akiko Hirai, Studio MC (Jessica Coates and Michel Müller), Adi Toch and Andrea Walsh. As the title suggests, ‘Antipode’ explores the opposing outcomes and unexpected counterpoints that surface through each maker’s intimate understanding of their material and the conceptual exploration of the vessel. The makers stretch the traditional boundaries of metal, clay and glass, intuitively referencing the functional and sculptural within their practice.

Learn more →

About Make

Make Hauser & Wirth Somerset is a destination for contemporary making and the crafted object, showcasing work from the best emerging and established makers both nationally and internationally. All works are for sale.

Since its launch in 2018, the gallery has presented work by over fifty artist-makers, providing valuable insights into the working processes and rich narratives of their practices. Make occupies two rooms of a Georgian townhouse at 13 High Street, Bruton with Jacqueline Moore as Director. There is an emphasis on pieces commissioned specifically, for Make, some of which are created in response to Somerset and the South West, employing locally sourced materials. To coincide with the diverse and collaborative exhibition program, the gallery hosts participatory experiences including talks, workshops, residencies and community events.

Learn more →







Adi Toch
Blue in Motion
2020
20 × 20 × 12 cm / 7.9 × 7.9 × 4.7 in
Patina on silver plated metal, moonstones



Adi Toch
Blue Plump Wall Object
2019
26 × 25 × 8 cm
10.2 × 9.8 × 3.1 in
Patinated Britannia silver
(hallmarked)



Adi Toch
Plump Wall Object
2019
29 × 28 × 8 cm
11.4 × 11 × 3.1 in
Britannia silver (hallmarked)

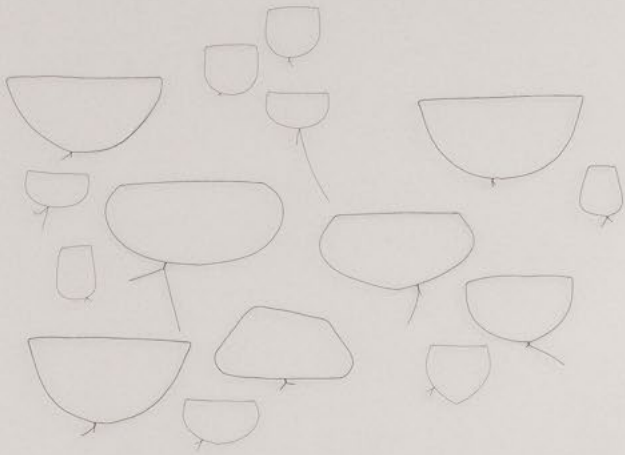


Adi Toch
Liquid Forms

2020
7.5 × 7.5 × 3.5 cm / 2.9 × 2.9 × 1.4 in
8 × 8 × 4 cm / 3.1 × 3.1 × 1.6 in
Britannia silver (hallmarked)

Adi Toch
Small Vessel on Stilts

2021
6 × 6 × 9.5 cm
2.4 × 2.4 × 3.7 in
Britannia silver (hallmarked),
stainless steel





Akiko Hirai

Poppy Pod Tsubo

2021

35 × 35 cm / 13.8 × 13.8 in

Stoneware



Akiko Hirai
Poppy Pod Small
2021
13 × 15 cm / 5.1 × 5.9 in
Stoneware

Akiko Hirai
Poppy Pod Medium
2021
16 × 20 cm / 6.3 × 7.8 in
Stoneware





Akiko Hirai

Large Moon Jar

2021

55 × 55 cm / 21.7 × 21.7 in

Stoneware, porcelain





Studio MC
Jessica Coates + Michel Müller
Workpiece IV
2020
27.5 cm / 11 in
Stoneware clay



Studio MC
Jessica Coates + Michel Müller
Workpiece III
2020
34 cm / 13.5 in
Stoneware clay, white engobe





Studio MC
Jessica Coates + Michel Müller
Workpiece I
2020
31 cm / 12 in
Stoneware clay, white engobe





Andrea Walsh

Pair of Contained Forms (Rounded Oval),

A. Warm White, Clear Frit, Yellow Frit,

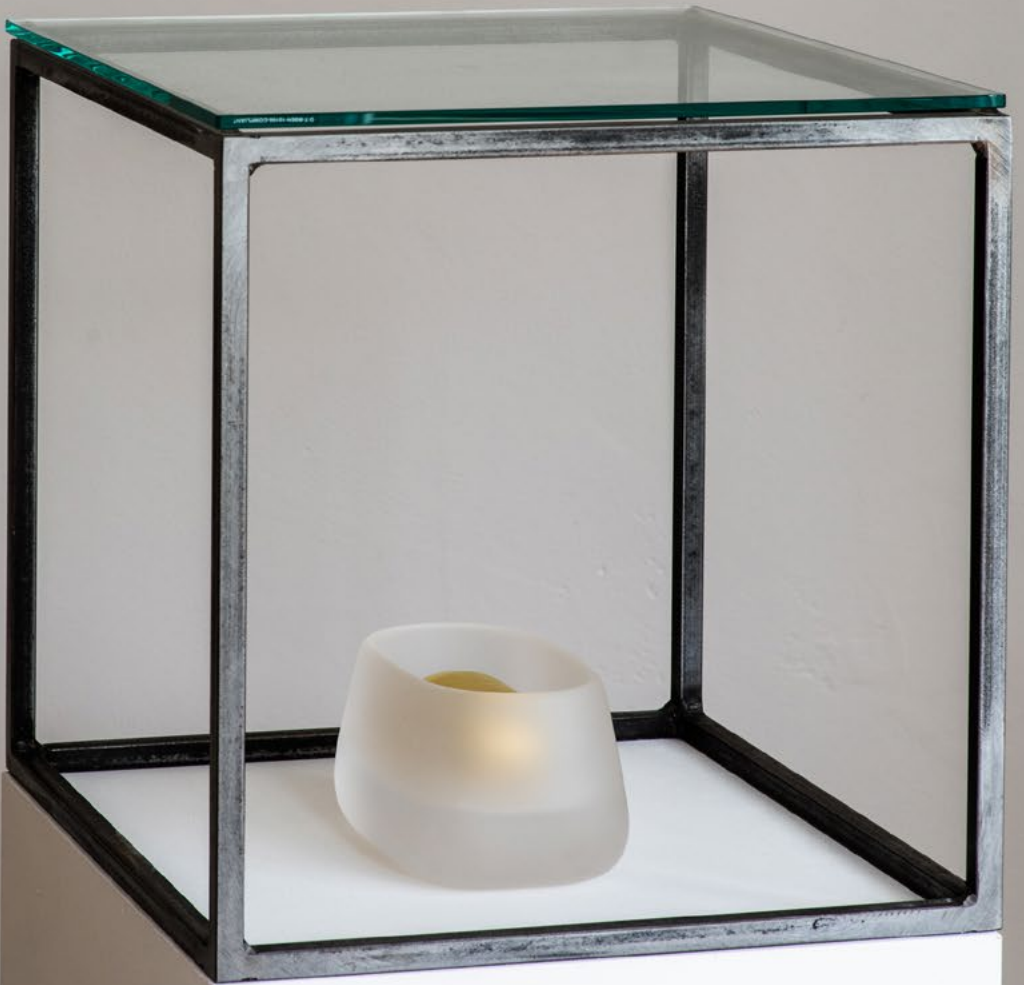
B. Clear/Gold, Warm White, Clear

2021

Each approximately 10 × 15 × 9cm

3.9 × 5.9 × 3.5 in

Lost Wax Cast Glass, Fused & Slumped Glass



Andrea Walsh
Contained Box (Soft Oblong)
Clear & Gold
2021

Approximately 9 × 16.5 × 9cm
3.5 × 6.5 × 3.5 in

Lost Wax Cast Glass, Fine Bone China
22ct Burnished Gold





Andrea Walsh
Pair of Contained Boxes (Square),
A. Black & Platinum,
B. Clear & Gold
2018

Each approximately 11.5 × 11.5 × 11.5cm
4.6 × 4.6 × 4.6 in

Lost Wax Cast Glass, Black Fine Bone China
22ct Burnished Gold, Burnished Platinum



Andrea Walsh
Collection of Contained Boxes, Clear & Gold,
Nude & Platinum, Pale Yellow & White
2019

Display size approximately,
9 × 15 cm × 100 cm / 3.5 × 5.9 × 39 in
Lost Wax Cast Glass, Fine Bone China,
22ct Burnished Gold, Burnished Platinum