

Press Release

## Henry Moore. Sharing Form

Hauser & Wirth Somerset

28 May – 4 September 2022

Opening Reception: Friday 27 May 2022, 6 – 8 pm



In Spring 2022, Hauser & Wirth Somerset will present a major exhibition of works by Henry Moore, curated by Hannah Higham of the Henry Moore Foundation in collaboration with the artist's daughter Mary Moore. A comprehensive survey spanning six decades will extend across all five gallery spaces, in addition to an open-air presentation of seminal works including: 'The Arch' (1963/69), 'Large Interior Form' (1953 – 1954) and 'Locking Piece' (1962 – 1963). Alongside the exhibition, the gallery will launch a far-reaching education and events programme, including a new Education Lab in partnership with the Arts University Bournemouth.

The exhibition takes as its starting point the artist's early fascination with the Neolithic site of Stonehenge and continued exploration of the upright abstract form. Moore first encountered the prehistoric monuments under the moonlight as a young man in 1921; fifty-two years later he embarked on a series of lithographs on the subject. Moore was fascinated by the relationship between the towering masses of ancient stone, their size and siting in the landscape, and the mysterious 'depths and distances' evoked on his returning visits. For Moore, the power and intensity of such large forms set against land and sky precipitated career-long investigations into scale, material and volume and the juxtaposition of art and nature, which will be presented throughout the exhibition.

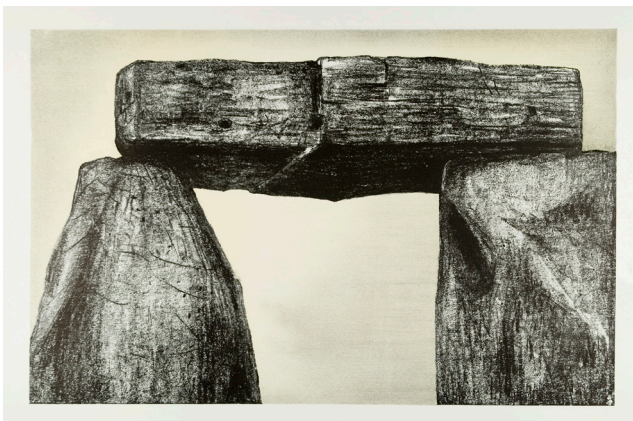
Alongside Moore's most celebrated works, the viewer will be immersed in a deeply personal selection of artworks and objects curated by Mary Moore, set within the centre of the exhibition. The collection contains almost 100 items from her father's studio and home, providing an insight into the working life of the sculptor and intimate memories she holds through these objects. The unique experience brings together Moore's visual library and the vocabulary of ideas that he developed during his working life.

## HAUSER & WIRTH

### SOMERSET

As visitors arrive at the Threshing Barn, they will encounter four towering bronze Upright Motive sculptures. Between 1955 and 1979 Moore created nine large-scale Upright Motives and a substantial group of related maquettes and reliefs in bronze and plaster. Presented together, the interplay of these works is reminiscent of prehistoric monoliths or Celtic cruciform, creating relationships between the forms and the spaces between them. The motives are ambiguously figurative, while firmly rooted, evoking the organic growth of trees and stalagmites. Deep grooves and intriguing orifices encourage close-up inspection, while moving through and around them collectively causes reflection on different modes of human expression.

The Workshop Gallery will feature Moore's significant series of etchings and lithographs depicting the site of Stonehenge, dating from 1972. In these works, we see Moore continuing to explore the relationship of the stones to each other and to the spectator, from tightly framed examinations of surface to wider views. During the early 20th Century there was an increasing interest in similar Neolithic sites, thanks to recent archaeological discoveries. Stonehenge was viewed as a highly wrought work of art, its powerful and primal forms capable of soliciting a profound emotional response. While Moore was fascinated by the ancient and enigmatic history of the site, of even greater impact was the grandeur of the sculptural idea. In the 1920s and 1930s Moore, alongside other avant-garde sculptors, championed the principles of direct carving and truth to materials. By working directly with stone and allowing its natural properties to emerge, Moore bridges ancient with modern. Works such as 'Square Form' (1934) marries a surface incised with rune-like glyphs with a solidity of stature that speaks of the universal power of prehistoric stones.



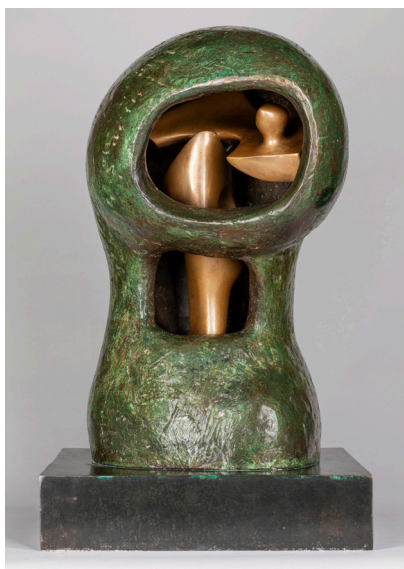
Upon entering the Pigsty Gallery, the visitor will be immersed in Moore's studio environment, including intimate, domestic objects from the artist's family home. Mary Moore has selected cherished works of art from diverse backgrounds that demonstrate Moore's engagement with ethnography, including Mayan, Aztec, Oceanic and Classical. These works sit seamlessly alongside found natural objects, which Moore frequently collected from the landscape. Moore's working process and creative mind are vividly brought to life by the juxtaposition of artist's tools, maquettes and wall reliefs, both in plaster and their final bronze state.

As a result of his experimental studio process, Moore arrived at a fluency of sculptural language which he could employ in a variety of materials and on different scales. In bronze, stone and plaster, in relief and in the round, earthbound or poised on points, the works within the Rhoades Gallery embody Moore's understanding of gravity and weight, volume and space. The petrification of the body was a common theme in folklore and permeates ancient sites such as Carnac or the Merry Maidens in Cornwall, where dancing women or pagan soldiers were turned to standing stone. The emergence of figures from stone is clearly seen in 'Two Standing Figures' (1981) in which Moore also evokes the counter to petrification, the sculpture brought to life. It is not only the mass of the two rising figures but the envelope of space between them that animates the work.

**HAUSER & WIRTH**  
**SOMERSET**

Works presented within the Bourgeois Gallery will highlight how Moore repeatedly explored the theme of internal / external forms, enjoying the visual excitement generated by presenting one form through another. Observing similar structures in armour and in nature, such as shells of crustaceans, seed pods and our own skulls, he connected the theme to ideas of growth, nurture and protection. Moore made frequent visits to the varied museums of London. The mathematical models of the Science Museum precipitated a number of works in which he used string in juxtaposition with a curvilinear mass, offering both formal and symbolic possibilities, such as 'Stringed Figure: Bowl' (1938 cast 1967). String could simultaneously enclose and reveal space, creating a transparent and permeable surface.

At the Wallace Collection, Moore was fascinated by helmets and over the course of his career made a series of helmet head sculptures, drawings and related works which powerfully convey protection, enclosure and strength, such as 'The Helmet' (1939-40) and 'Helmet Head No.4: Interior-Exterior' (1963). Natural or technological, ancient or modern, Moore absorbed and synthesised these sources into works which investigate the interdependence of forms, volume and void, and the generative mystery of semi-obscurity.



Running concurrently with 'Henry Moore. Sharing Form' in Somerset, 'Henry Moore: The Sixties' is also on view from 1 April - 30 October 2022 at the Henry Moore Studios and Gardens, Perry Green, Hertfordshire.

**Press Contacts:**

Laura Cook  
lauracook@hauserwirth.com  
+44 (0)1749 814 595

Charlotte Sluter  
charlotte@suttoncomms.com  
+44 (0)207 183 3577

**Hauser & Wirth Somerset**

Durslade Farm, Dropping Lane  
Bruton, Somerset BA10 0NL

Gallery hours:  
Tuesday – Sunday  
10 am – 5 pm

**www.hauserwirth.com**  
**@hauserwirthsomerset**

**Copyright and Courtesy Credits:**

All images: Reproduced by permission of The Henry Moore Foundation

Henry Moore with three of his Upright Motives  
c.1955  
Photo: Barry Warner

Henry Moore  
Stonehenge I  
1973  
Lithograph in three colours  
Photo: Michael Phipps

Circa 1950 Henry Moore sculpts whilst his young daughter, Mary, draws in the studio which adjoins his home, Hoglands  
Photo: Felix H. Man

Henry Moore  
Helmet Head No.4: Interior-Exterior  
1963  
Bronze  
Photo: Nigel Moore

Henry Moore  
Two Standing Figures  
1981  
Travertine marble  
Photo: Jonty Wilde