

Spotlight on the Emergency Department

When you don't know what's coming through your doors, don't take any chances with cleaning and disinfection protocols.



96% of Emergency Department (ED) nurses say *C. difficile* and MRSA are top concerns.¹

137 million

ED visits have increased over the past 7 years and continue to remain high. In 2015, there were 137 million visits to the ED.²

66%

Up to $\frac{2}{3}$ of ED procedures result in healthcare professional exposure to blood or body fluids.³

10%

Among those presenting to US EDs with diarrhea and no vomiting, 10% had a *C. difficile* infection.⁴

1. Clorox Custom Research, Acute Care Departmental Quantitative Analysis of Clinical Staff (n=139), March 2018.
2. Rui P, Kang K. National Hospital Ambulatory Medical Care Survey: 2015 Emergency Department Summary Tables. https://www.cdc.gov/nchs/data/nhamcs/web_tables/2015_ed_web_tables.pdf (Accessed 8/29/2018).
3. Liang SY, Theodoro DL, Schuur JD, Marschall J. Infection prevention in the emergency department. *Ann Emerg Med.* 2014;64(3):299-313.
4. Abrahamian FM, et al. *Clostridium difficile* infection among US emergency department patients with diarrhea and no vomiting. *Annals of Emergency Medicine.* 2017; 70 (1): 19-27e.4.

Recommended Products

Fast Contact Times

Clorox Healthcare® Hydrogen Peroxide Cleaner Disinfectant liquids and wipes are ideal for use in the Emergency Department. Fast contact times and excellent cleaning power give you more time to care for your patients in need.

For Between-Patient Cleaning

Use bleach when *C. difficile* is a concern

Kills over 40 pathogens in 1 minute or less



Clorox Healthcare® Hydrogen Peroxide Disinfectant Wipes & Liquids

Kills *C. difficile* spores in 3 minutes



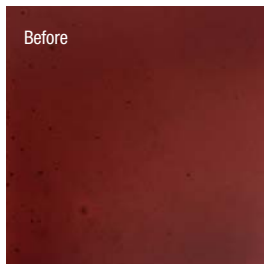
Clorox Healthcare® Bleach Germicidal Wipes & Liquids

Kills *C. difficile* spores in 2 minutes



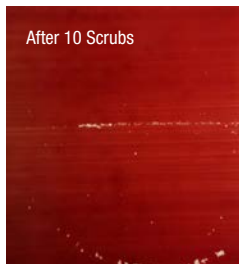
Clorox Healthcare® Fuzion™ Cleaner Disinfectant

Excellent Cleaning Power



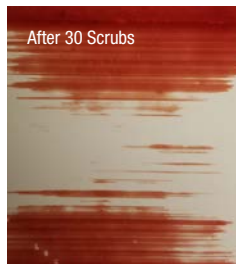
Before

White ceramic tile soiled with dried porcine blood

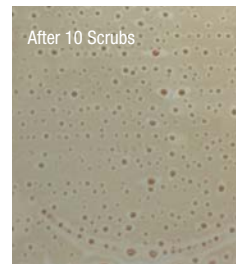


After 10 Scrubs

PDI® Super Sani-Cloth® Wipes

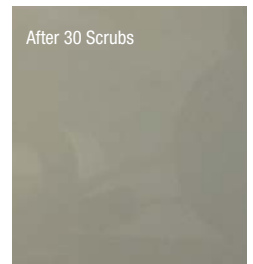


After 30 Scrubs



After 10 Scrubs

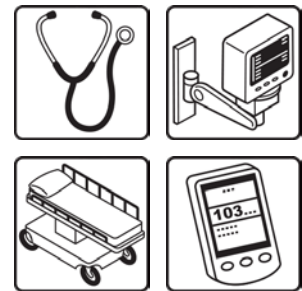
Clorox Healthcare® Hydrogen Peroxide Wipes



After 30 Scrubs

Surface Compatibility and Endorsements

Our products are scientifically tested on a variety of medical surfaces and equipment. A sample of manufacturer endorsements is provided below. For comprehensive information on the Clorox Healthcare Compatible™ program, visit www.cloroxhealthcare.com/compatibility.



Product Type	Manufacturer	Clorox Healthcare® Endorsed Product
Beds/Stretchers	Midmark	Hydrogen Peroxide Wipes Also endorsed: Germicidal Bleach Wipes
Glucometers	Arkray ASSURE® Platinum Glucose Meter	Hydrogen Peroxide Wipes Also endorsed: Germicidal Bleach Wipes
Ultrasound Transducers and Probes	Phillips (consult Clorox Compatible Equipment Endorsement List)	Hydrogen Peroxide Wipes
	Fuji film Sonosite (consult Clorox Compatible Equipment Endorsement List)	Hydrogen Peroxide Wipes
Patient Monitoring Systems/Vital Sign Monitors	Phillips IntelliVue Patient Mx400/450/500/600/700/800	Hydrogen Peroxide Wipes
	Barco Eonis® Diagnostic Displays	Hydrogen Peroxide Wipes



For more information contact your Clorox Healthcare account manager or call 800-638-2625
Email: healthcare@clorox.com
Visit: www.cloroxhealthcare.com

© 2018 Clorox Professional Products Company, 1221 Broadway, Oakland, CA 94612.
www.cloroxpro.com