
ANNUAL LEASE INFORMATION FOR EMERALD OF CYPRESS

PARCEL 1: NE 15-8-4-W4TH

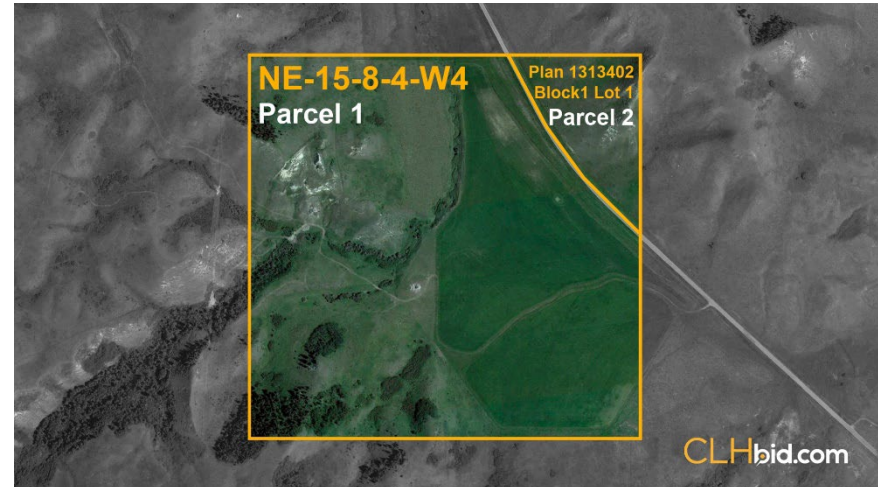
PINE CLIFF ENERGY LTD.

(Surface Lease dated: June 3, 2005)

\$ 1,650.63

*Please note the well has an abandoned status. We did double check with Pine Cliff Energy Ltd. and were advised that “as far as reclamation is concerned, it is on [their] list but [they] can’t guarantee the timeline. There’s a chance they may start this year, however it can typically take a year or two before they can apply for a reclamation certificate.”

PARCEL 2: DESCRIPTIVE PLAN 1313402 BLOCK 1 LOT 1



This statement is based on information provided to us. The information is believed to be correct, but its accuracy cannot be guaranteed. Errors and/or omissions discovered prior and after auction shall be adjusted directly between the parties. E. & O.E.