

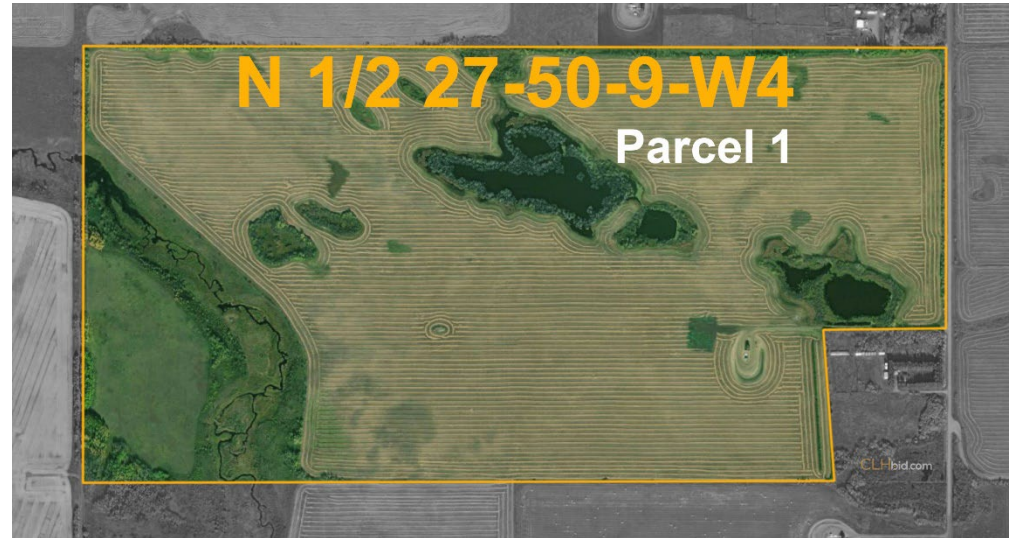
ANNUAL SURFACE LEASE INFORMATION FOR TURNING POINT AT MANNVILLE

PARCEL 1: N 1/2 27-50-9-W4TH

PERPETUAL OPERATING CORP. \$ 2,900.00
(Surface Lease dated October 16th, 1970)

PERPETUAL OPERATING CORP. \$ 3,050.00
(Surface Lease dated September 15th, 2008)

\$ 5,950.00



This statement is based on information provided to us. The information is believed to be correct, but its accuracy cannot be guaranteed. Errors and/or omissions discovered prior and after auction shall be adjusted directly between the parties.

E. & O.E.