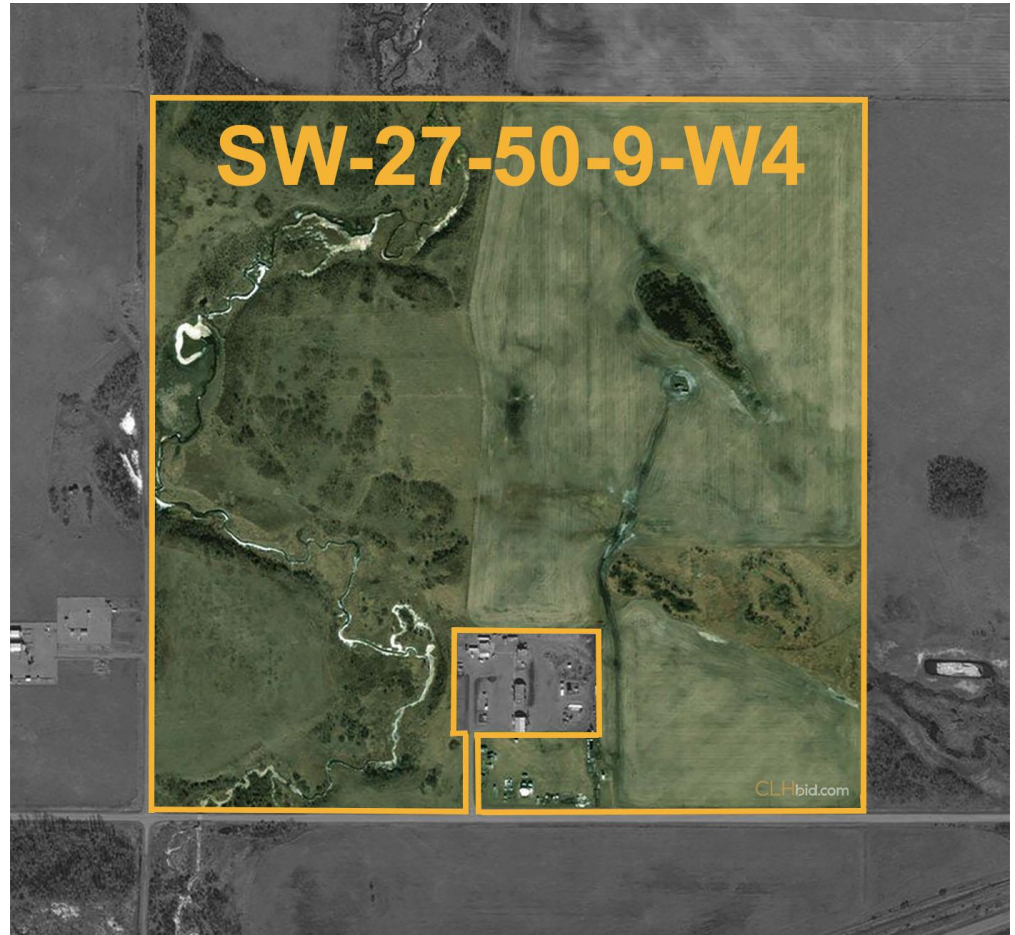


ANNUAL SURFACE LEASE INFORMATION FOR TURNING POINT AT MANNVILLE

PARCEL 2: SW 27-50-9-W4TH

PERPETUAL OPERATING CORP. (Surface Lease dated October 7 th , 1997)	\$ 800.00
ATCO GAS AND PIPELINES LTD. (Surface Lease dated October 20 th , 2000)	\$ 516.67
PERPETUAL OPERATING CORP. (Surface Lease dated October 3 rd , 2001)	\$ 2,600.00
	<hr/>
	\$ 3,916.67
	<hr/> <hr/>



This statement is based on information provided to us. The information is believed to be correct, but its accuracy cannot be guaranteed. Errors and/or omissions discovered prior and after auction shall be adjusted directly between the parties.

E. & O.E.