
ANNUAL LEASE INFORMATION FOR DRIVE BY 49

PARCEL 1: NW-11-79-10-W6TH & DESCRIPTIVE PLAN 0226759 BLOCK 1 LOT 1

NW-11-79-10-W6TH

NORTHRIVER MIDSTREAM INC.

(Surface Lease dated: February 21, 2007)

(Surface Lease payment due February 16, 2026

as per Northriver Midstream Inc.

NORTHRIVER MIDSTREAM INC.

(Surface Lease dated: January 16, 2024)

SPOKE RESOURCES LTD. (S09984)

(Surface Lease dated: June 30, 2003)

\$ 1,100.00

\$ 750.00

\$ 2,750.00

DESCRIPTIVE PLAN 0226759 BLOCK 1 LOT 1

(ATS: NW-11-79-10-W6TH)

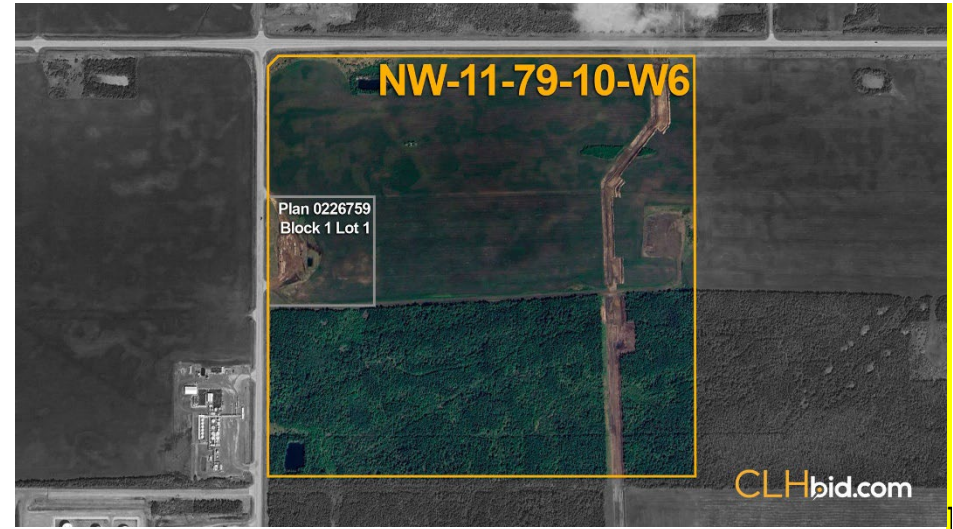
SPOKE RESOURCES LTD. (S09985)

(Surface Lease dated: June 30, 2003)

\$ 750.00

TOTAL=

\$ 5,350.00



This statement is based on information provided to us. The information is believed to be correct, but its accuracy cannot be guaranteed. Errors and/or omissions discovered prior and after auction shall be adjusted directly between the parties. E. & O.E.