

ANNUAL LEASE INFORMATION FOR SOUTHERN OUTSPREAD

PARCEL 1: SW-6-12-9-W4TH

-

PARCEL 2: N ½ 31-11-9-W4TH

SPARTAN DELTA CORP. (File No. S02963)

Surface Lease dated: March 19, 2003 (on NW-31-11-9-WTH) \$ 2,750.00

**See Note*

PARCEL 3: SW-29-11-9-W4TH

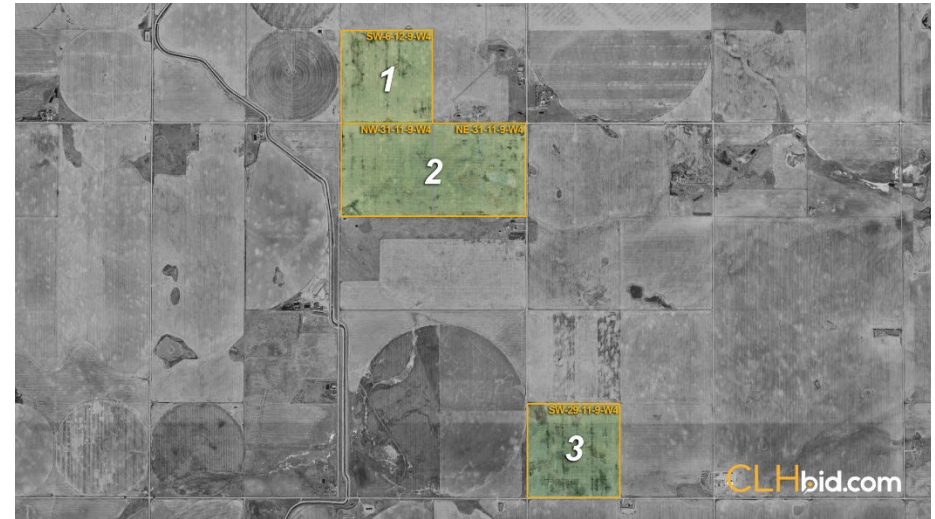
SPARTAN DELTA CORP. (File No. S02962)

(Surface Lease dated: March 19, 2003) \$ 3,800.00

**See Note*

GRAND TOTAL OF 3 PARCELS

\$6,550.00



***NOTE-** Please note both leases with Spartan Delta Corp. have an abandoned status. We have been advised that “both leases are in the process of being reclaimed and will probably be fully reclaimed in the next 2 years”.

This statement is based on information provided to us. The information is believed to be correct, but its accuracy cannot be guaranteed. Errors and/or omissions discovered prior and after auction shall be adjusted directly between the parties. E. & O.E.