

ANNUAL LEASE INFORMATION FOR AT THE HELM

PARCEL 1: W ½ 29-46-10-W4TH

PINE CLIFF ENERGY LTD.

PNE File: S8636

(Surface Lease dated: October 6, 1977)

\$ 3,825.50

*NOTE- the site has a suspended status. We were advised by Pine Cliff Energy Ltd. that “there are no plans for abandonment of this site for 2024. If it is abandoned in 2025 (plans have yet to be made for next years program), it would still take a few years for full reclamation of site to be complete”.

PARCEL 2: NE 29-46-10-W4TH

-

-

PARCEL 3: NE 27-47-10-W4TH

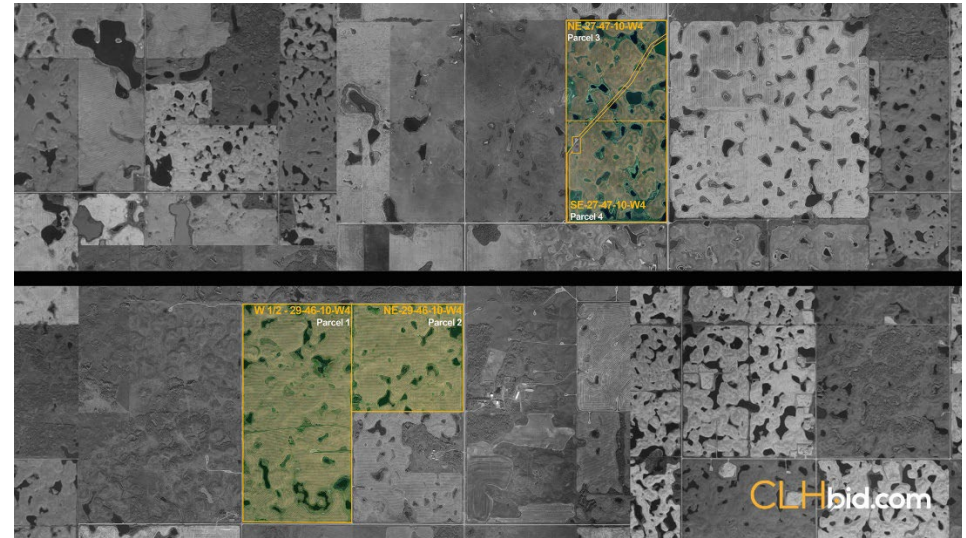
-

-

PARCEL 4: SE 27-47-10-W4TH

-

-



This statement is based on information provided to us. The information is believed to be correct, but its accuracy cannot be guaranteed. Errors and/or omissions discovered prior and after auction shall be adjusted directly between the parties. E. & O.E.