

---

## ANNUAL LEASE INFORMATION FOR CATTLEMAN'S CORNER

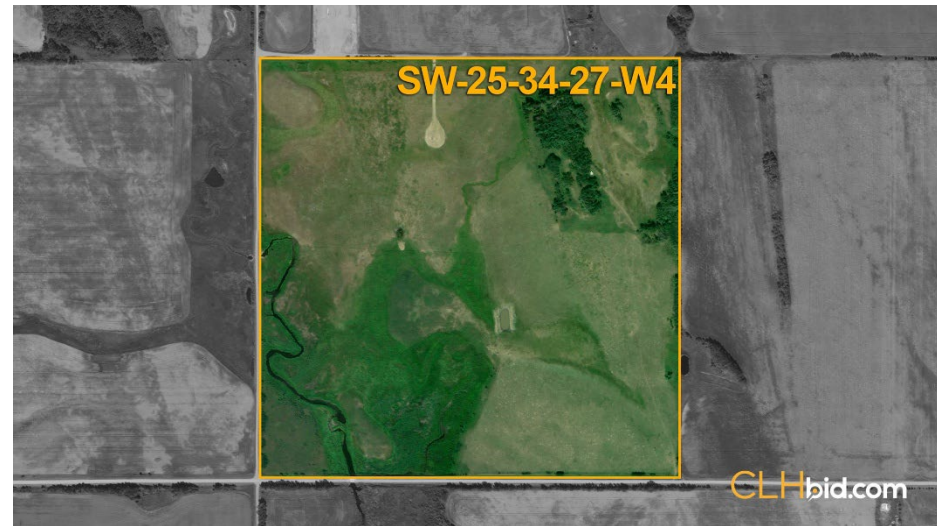
---

### PARCEL 1: SW-25-34-27-W4TH

EMBER RESOURCES INC.

(Well Site and Access Road dated: December 30, 2004)

\$ 2,850.00



This statement is based on information provided to us. The information is believed to be correct, but its accuracy cannot be guaranteed. Errors and/or omissions discovered prior and after auction shall be adjusted directly between the parties. E. & O.E.