
ANNUAL LEASE INFORMATION FOR FIVE STAR PLUS

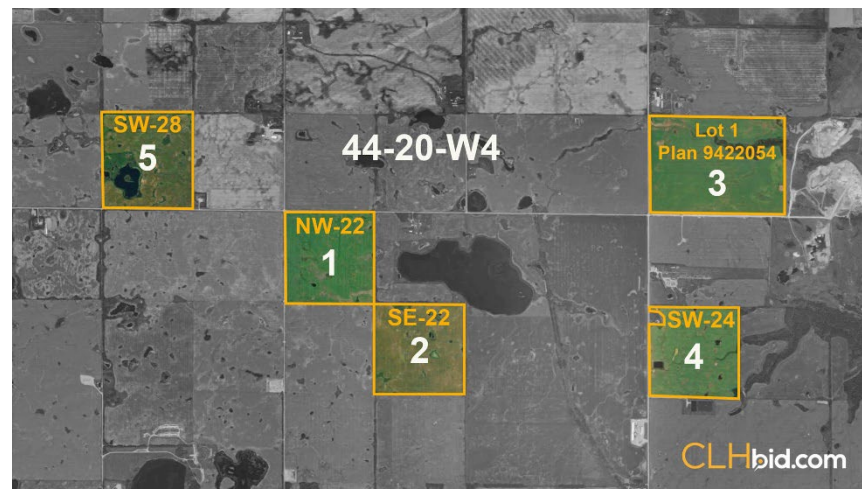
PARCEL 1: NW-22-44-20-W4TH

RIFE RESOURCES LTD.

\$ 1,450.00

(Surface Lease dated: June 13, 1990)

NOTE- Rife Resources Ltd. is in the process of reclamation on the wellsite. The well was cut and capped on February 26, 2013. We were advised that the status of reclamation is as follows: Supplemental Phase II - Monitoring / AOR/ Rec Cert Expected In 2025



This statement is based on information provided to us. The information is believed to be correct, but its accuracy cannot be guaranteed. Errors and/or omissions discovered prior and after auction shall be adjusted directly between the parties. E. & O.E.