

**West  
Yorkshire**  
Combined  
Authority

## Putting Equality at the Centre of Local Transport Policy

Kit Allwinter



Space is at a premium in our towns, cities, villages and even our countryside.

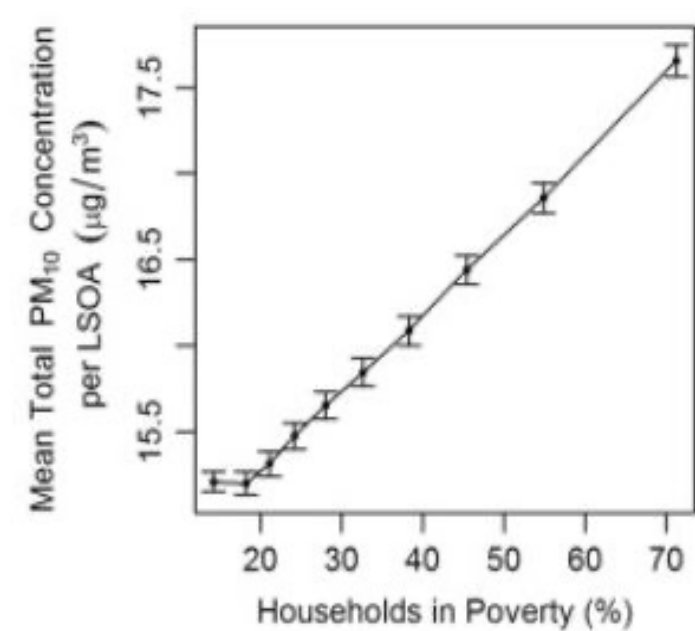
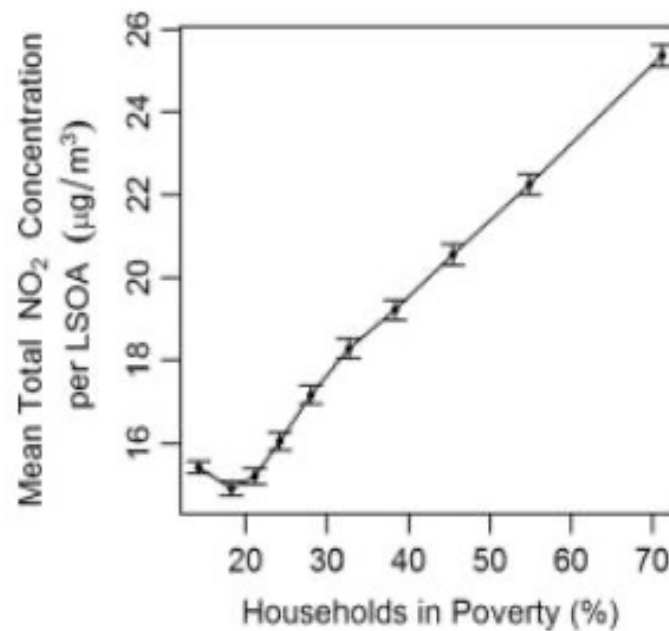
- (
- t
- V
- C
- I
- T
- 2
- S
- T





## Air Quality

- Asthma
- Dementia
- Cancer
- Schizophrenia
- Bipolar disorder



- Non-exhaust sources account for 90% of PM<sub>10</sub> and 85% of PM<sub>2.5</sub> from traffic
- Electric vehicles were found to be 24% heavier than equivalent ICE cars
- PM<sub>10</sub> emissions from EVs are equal to those of ICEVs
- PM<sub>2.5</sub> emissions are only 1 – 3% lower for EVs compared to ICEVs.

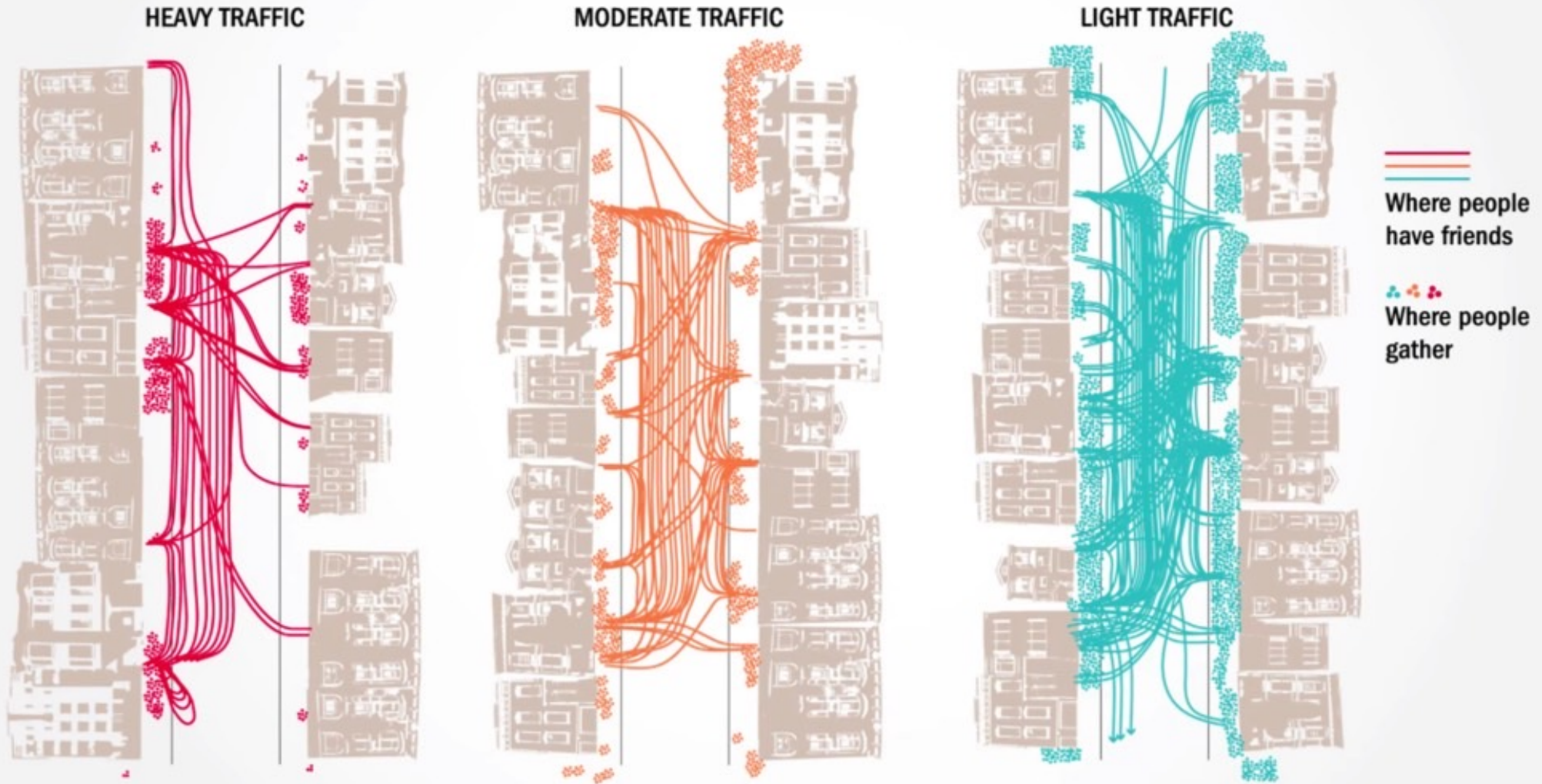
Timmers & Achten, (2016), 'Non-exhaust PM emissions from electric vehicles'

*"[Our work] shows a strong negative correlation between emissions generation and poverty, signifying that households in the poorest areas emit the least NO<sub>x</sub> and PM, whilst the least poor areas emitted the most. The correlation presented...indicates significant social inequality concerning exposure, however, [our work] indicates that traffic pollution within those poorer areas is likely to be caused by those living in relatively more affluent areas, further compounding this environmental injustice."*

Barnes et al, (2019), 'Emissions vs exposure: Increasing injustice from road traffic-related air pollution in the United Kingdom'

|               |                         |                       |
|---------------|-------------------------|-----------------------|
|               | 1966 Austin Mini Cooper | MINI Cooper 1.5-litre |
| <b>Length</b> | 3,054mm                 | 3,821mm               |
| <b>Width</b>  | 1,410mm                 | 1,727mm               |
| <b>Height</b> | 1,350mm                 | 1,414mm               |
| <b>Weight</b> | 636kg                   | 1,160kg               |

# Social Interactions on Three Streets - Neighboring and Visiting





## Inequality & Community

- 20% of men and 30% of

**Oh, and then there are road accidents....**

160,000 injuries a year and 5 deaths a day

- Only one-third of households in the lowest income decile have access to a car or van.

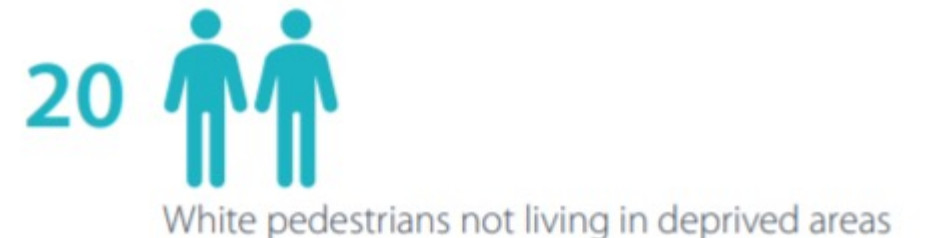
- **Half of single parent families with children don't have access to a vehicle.**

- When

- In 2010, household related low income running

- This means many households in low income

The annual pedestrian casualties per 100,000 were:





## How much does it cost to run a car?

| Item  | Average per month             |
|---|-------------------------------|
| Fuel  | £67.63                        |
| Car insurance   | £31.64                        |
| Routine maintenance and servicing                         | £15.96                        |
| Unexpected repairs and breakdowns                         | £13.26                        |
| Vehicle excise duty (road tax)                            | £12.16                        |
| Breakdown cover   | £6.96                         |
| Parking permits and tickets                               | £6.89                         |
| Cleaning  | £4.15                         |
| Fines   | £3.69                         |
| <b>Monthly average total (excluding finance)</b>          | <b>£162.33</b>                |
| <i>Finance</i>  | <i>£226.12</i>                |
| <b>Monthly average total (including finance payments)</b> | <b>£388.45 (2018 figures)</b> |



**£1,947.96 (exc. finance) p.a.**

**£4,661.40 (inc. finance) p.a.**

**Alright. So not car-ownership based.**

# Short Journeys – part of the mix

- **Trip-chaining can be hard to cater for with traditional corridor or so-called hub & spoke transport models**
  - 14.3% of vehicles are used only for afternoon leisure trips
  - 7.4% for “afternoon multitasking”
  - 13.1% are for a “lunchtime dash” of short distance
  - **Active Travel ideal for these short journeys**





# Short Journeys – part of the mix

---

- **38% of all trips in West Yorks are less than two miles**
- A further 30% are between two and five miles
- 47% of commuter journeys less than two km are made by car
- **Active Travel ideal for these short journeys for day-to-day things**
- **15 Minute Neighbourhoods?**



# Active Travel – Walking, Cycling, Wheeling, Hopping...

---

It's vital that our infrastructure is suitable for all: children to the elderly, parents, the disabled, and all abilities

## Network Principles

- Coherent
- Direct
- Safe
- Comfortable
- Attractive
- **Integrated**



- Wheelchairs, scooters, buggies & trolleys
- Dropped kerbs or raised crossings
- No barriers or gates & well-lit



- Plenty of crossings with plenty of time
- Priority for people and places
- Permeable – easy and accessible



- Protected from motor traffic
- Prioritised in planning
- Designed for all cycle types

# Longer Journeys

---

- A reliable and attractive bus, rail and (whisper it) mass transit network which is competitive with the car
- Accessibility for all – level boarding? Every journey starts on foot...
- Simple, clear, integrated ticketing and fare capping – trust the process
- **Corridors & Supporting Routes**
- **MaaS?**



# Other Journeys

---

- Car Access when you need it
  - Car Clubs and Car Hire
- Demand Responsive Transport & Taxis
- E-Cargo Bike Hire? E-Scooters?
- Free to use the right tool for the job.
- **Putting the car back into its use case**



# Free from Car Dominated Lifestyles

---

- Opportunities extended equally to more people to do more things
- A virtuous cycle – higher ridership enables more investment and better services across our network
- Healthier, happier, more productive communities with higher quality of life
- **Better for our People**

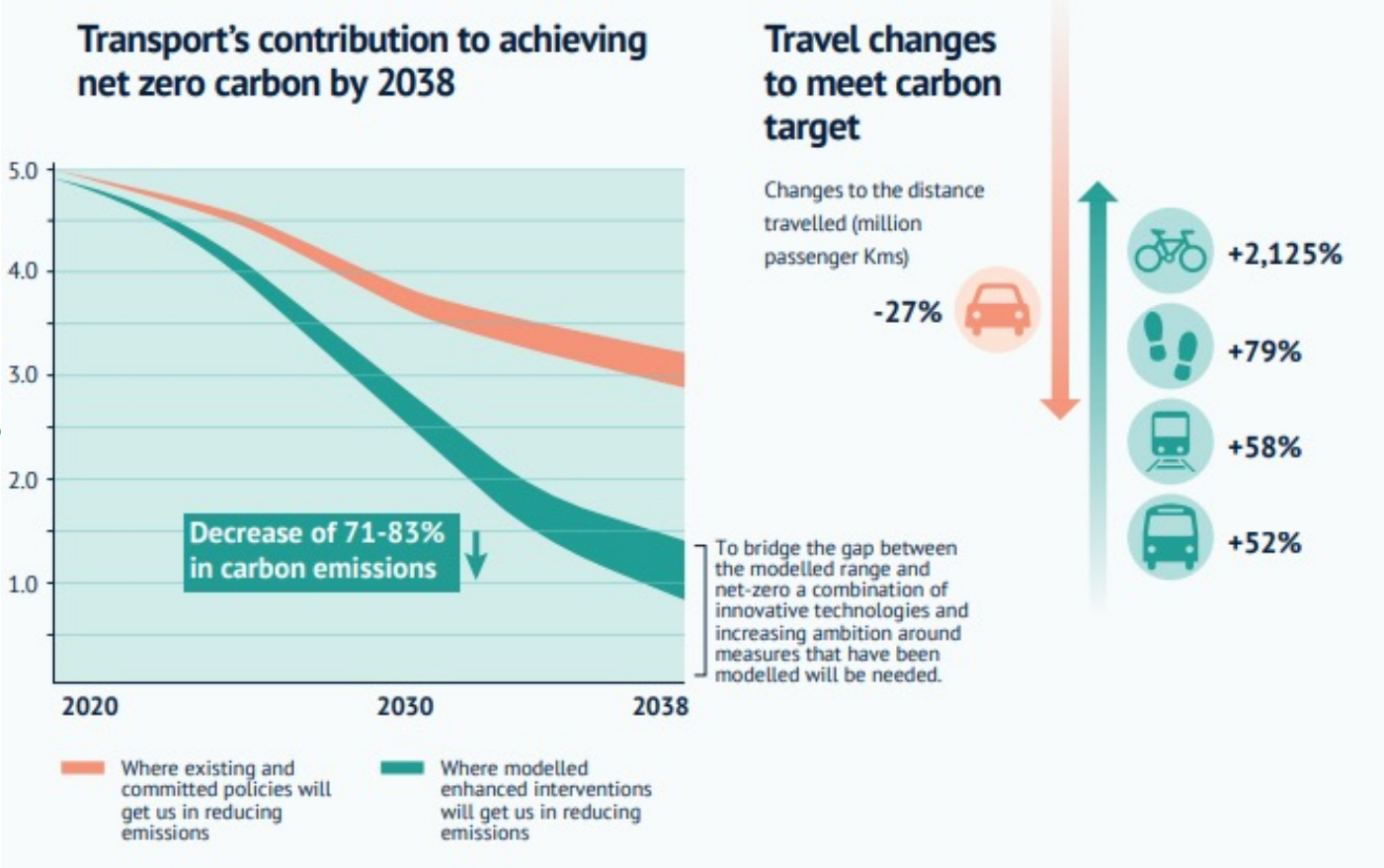


# Free from Car Dominated Places



# Free from Car Dominated Carbon

- Transport is our biggest emitter
- Of which the private car is the biggest proportion – EVs are part of the solution.
- **Fewer Cars, not just Newer Cars**
- Let us spend our limited carbon budget on building better places rather than bigger roads
- **Better for our Planet**



The logo for West Yorkshire Combined Authority is positioned in the upper left quadrant. It consists of the text 'West Yorkshire' in a large, bold, dark teal font, with 'Combined Authority' in a smaller, lighter teal font below it. The text is set against a white circular background. To the right of this circle are two overlapping, semi-transparent teal circular shapes that create a layered effect.

**West  
Yorkshire**  
Combined  
Authority

**Thank You**  
**@KitAllwinter**