



Our handpicked range

A selection of holiday homes handpicked for you



Our pick of the best, chosen for you

When it comes to finding your perfect holiday home, the choice can be bewildering (especially if it's your first time!). As experts in matching owners to their right home from home, we've put together a selection of this season's best models, carefully chosen to suit a wide range of needs, tastes and budgets.

Perhaps you need a super comfortable bed for a good night's sleep, plus extra storage for the kids' toys? Or maybe an extra bathroom or toilet, so there are no queues when the whole family are visiting? Whether you're looking for comfort, luxury, indulgence or something a bit different, you'll find it in our handpicked range.

Your holiday home package

When you buy your holiday home, we'll include everything you need to get started:

- Starter inventory, including carpets, curtains and furnishings
- Useful extras – steps/handrails, smoke alarm, fire extinguisher, outside light, TV aerial
- 10 Privilege Cards for you and your favourite people to enjoy. You'll get 15% off* in our bars, restaurants and shops, plus pay half-price for all leisure activities, and get entry into all our venues for nothing at all
- A five-year warranty with new holiday homes or a two-year warranty with previously owned models

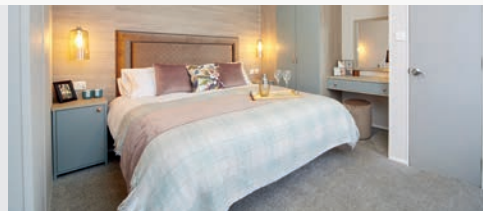
Our handpicked range

We've got three categories with models from leading manufacturers, designed with you needs in mind.



Comfort

Attractive and practical, an ideal choice for a first holiday home.



Luxury

Spacious and homely. Relax in stylish contemporary surroundings.



Indulgence

Elegant kitchens, beautiful lounges and large master bedrooms.



Let your place pay for itself

With our Simply Letting service[^], your home from home can be making money being let to holidaymakers any time you're not there – which can go towards site fees and running costs. You can feel reassured that we'll look after it like our very own, checking it after every visitor leaves. We'll replace any missing standard inventory, and give you a free carpet and upholstery clean when needed too.

[^]Terms and conditions apply, please ask for more details.
Not available at Far Grange, Cardigan View and Garreg Wen.

ABI Horizon



Exclusive to Haven, the perfect place to spend precious family time.

The open-plan living space is deceptively spacious. There's plenty of room for you all to gather round and play a game of snap on rainy days. But with a separate kitchen, bedrooms and a shower cubicle, you'll have plenty of your own space too.

What's fantastic about this holiday home?

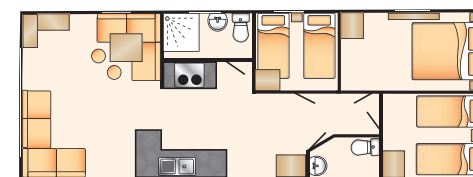
- Practical kitchen with modern woodgrain units
- Four-hob cooker with separate grill and oven
- Modern galley-style kitchen
- Large, open living space
- L-shaped lounge seating with pull-out bed
- Scatter cushions in lounge
- Dinette area with fan-shaped dining table
- Large wardrobe in master bedroom
- Separate shower room with toilet

Full-height
media unit

Fresh,
modern and
cosy styling

Sociable living
space with
ample seating

Modern
electric fire



36ft x 12ft, 3 bed

Willerby Seasons



Exclusive to Haven, providing all you need to start enjoying a holiday home lifestyle at an affordable price.

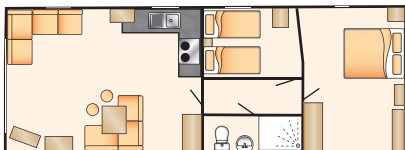
This traditional holiday home is great value; it has a spacious feel with its open-plan layout and neutral furnishings. With lots of seating, including an L-shaped sofa, it's the perfect holiday home for a social gathering with friends, family and neighbours.

Open-plan layout

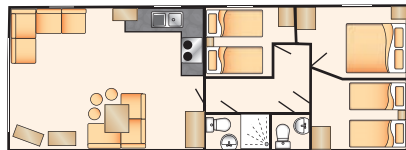
Central heating and double glazing

Flame-effect fire

Extra storage option available



35ft x 12ft, 2 bed



35ft x 12ft, 3 bed

What's fantastic about this holiday home?

- Integrated Hotpoint microwave
- Free-standing fridge
- Contemporary kitchen doors
- Wraparound L-shaped seating with pull-out bed (2-bed model)
- King size bed with upholstered headboard (2-bed model)
- Dressing table and mirror (2-bed model)
- Extra storage in main bedroom
- Energy efficient PVCu double-glazed windows and doors



Comfort

ABI Coworth



Whether you want space to enjoy good company, or quiet moments alone, the Coworth has got what you need.

Get everyone cosy on the Coworth's super-sociable sofa – the U-shaped design is perfect for catch-ups. Dig into family feasts around the table. Settle down in front of the electric fire or tuck yourself up in the master suite's king size bed for some real peace and quiet.

What's fantastic about this holiday home?

- Spacious family holiday home
- Free-standing fridge
- Fixed dinette seating with a difference
- Scatter cushions in lounge
- Carpet underlay in lounge
- USB socket in lounge
- En suite toilet

Brand-new
model in 2020

Choice
of electric
heating or
central heating

King size
bed in master
bedroom

2'6" single beds
in twin room
(36ft x 12ft
models only)



36ft x 12ft, 2 bed



36ft x 12ft, 3 bed

Other sizes available, including 28ft x 10ft and 28ft x 12ft, 2 bed. Ask for details.

Atlas Mirage



An ideal first holiday home with a luxurious feeling.

The Atlas Mirage has all the everyday space that you need. The separate dining area is very practical and a great way to socialise with family and friends. The accent furnishing scheme guarantees to brighten up even those duller of days.

Front vision
doors

Central heating
and double
glazing

Split cushion
L-shaped sofa

Integrated
microwave



35ft x 12ft, 2 bed



36ft x 12ft, 3 bed

What's fantastic about this holiday home?

- Front Vision door
- Light, airy and spacious
- Integrated appliances
- Spacious dining area
- Fixed dinette with bench seating
- Pull-out bed to lounge
- Voiles fitted throughout
- Electric fire to lounge
- Large double bedroom (with cot space)
- En suite toilet to 35ft model
- Extractor fan to main bathroom/shower room
- Sockets with USB port
- LED lighting throughout
- Exterior light



Willerby Sierra



With smart use of space throughout you'll feel at home in no time.

The Sierra has a stylish and distinguished look that doesn't skimp on sophistication. Featuring comfortable and tasteful furnishings throughout, it is a practical and understated holiday home perfect for those who love an open-plan layout.

What's fantastic about this holiday home?

- Open-plan lounge complete with L-shaped seating with fold-out sofa bed
- Free-standing dining table and chairs
- Integrated Hotpoint microwave and free-standing fridge-freezer
- Gas oven/grill with hob and glass splashback
- Front-opening patio doors
- Plumbing for dishwasher
- Stylish electric fire
- King size bed with lift-up storage and overhead storage (2-bed model)
- Dressing table with mirror
- Bedside cabinets and wall lights
- En suite WC in master bedroom (2-bed model)

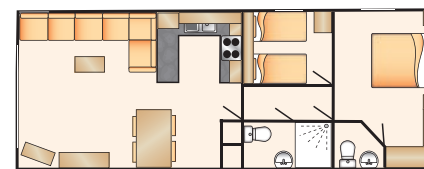
Panoramic windows

Central heating and double glazing

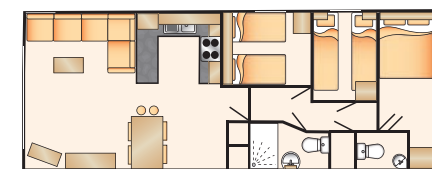
Clever storage solutions

A grown-up master suite

Family sized fridge-freezer



35ft x 12ft, 2 bed



38ft x 12ft, 3 bed

Atlas Chorus



Perfect for relaxing and entertaining, with flexible seating and a contemporary feel, and boutique-style bedrooms.

The Chorus is carefully designed to be both attractive and practical with a sense of contemporary flair. This year's model carries the indulgent feeling throughout the van with feature mood lighting in the headboards, soft neutral furnishings and room to stretch out in, making it the perfect holiday home for both relaxing and entertaining.

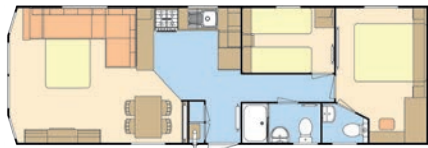
Front
vision doors

Contemporary
styling

Boutique-style
bedrooms

Integrated
fridge-freezer
and
microwave

Spacious
and airy



36ft x 12ft, 2 bed



40ft x 12ft, 3 bed

What's fantastic about this holiday home?

- Central heating and double glazing
- L-shaped lounge seating
- Pull-out bed to lounge
- Free-standing dining table and chairs
- Integrated oven and grill with four-ring hob and electric ignition
- Plumbing for dishwasher
- Cooker extractor vented to exterior
- King size bed
- En suite WC to master bedroom
- Feature strip lighting to bedrooms
- Extractor fan to main bathroom/shower room
- Appliance shelf and socket
- Sockets with USB port
- Extra insulation
- Low-energy lighting
- Exterior light



Swift Bordeaux Exclusive



One of our best-sellers. This exclusive model is well-appointed and stylishly furnished.

For sumptuous holiday living the well-appointed and stylish Bordeaux Exclusive presents practical accommodation with free-standing sofas. Add in a stunning kitchen and stylish interior design for an incredible family space at exceptional value for money, as well as a homely feel.

What's fantastic about this holiday home?

- Luxury soft furnishings
- Integrated appliances
- Soft-close kitchen doors
- Contemporary electric fire and fireplace
- Luxury carpet with underlay throughout
- Stain-resistant carpets
- Generous storage for clothes
- TV sockets in the bedrooms
- USB sockets
- En suite to master bedroom
- Extractor fan vented to outside
- USB sockets
- Excellent thermal performance
- Bluetooth technology
- Low-energy LED lighting
- Bonded exterior walls
- Superior construction with galvanised chassis and bonded walls
- Extra storage available

Front-opening patio doors

Central heating and double glazing

Integrated dishwasher, microwave and fridge-freezer

Luxurious Duvalay mattresses on all bed

Bluetooth, USB points, ample sockets and TV points



38ft x 12ft, 2 bed, 2 showers



38ft x 12ft, 2 bed



38ft x 12ft, 3 bed

Atlas Heritage



All the comforts of home with domestic-sized, quality seating and mattresses.

The stunning Heritage feels exceptionally light and roomy with its 7ft side ceiling height and deep aspect windows. The interior is beautifully finished with two free-standing sofas and feature fire cabinet in the lounge, plus stunning contrast doors to all cabinets and fittings.

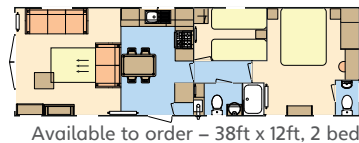
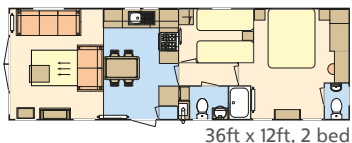
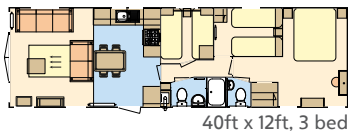
7ft internal walls giving a spacious feel

Opulent master bedroom

Free-standing Chesterfield sofas in the lounge

Log burning effect fireplace and surround

Integrated dishwasher and microwave



What's fantastic about this holiday home?

- Front vision doors with double glazed feature aspect windows
- Free-standing sofas
- Pull-out sofa bed to lounge
- Free-standing dining table and chairs
- Integrated oven and grill with four-ring hob
- Recirculating electric extractor hood with electric ignition
- Integrated fridge-freezer
- Sockets with USB to bedrooms, kitchen and lounge
- Over-bed reading lights
- TV points and TV cabinet in master bedroom
- Carpet with underlay
- En suite to 36ft x 12ft 2-bed and 40ft x 12ft 3-bed models
- Extractor fan to main bathroom/shower room
- Low-energy lighting
- Matt finish chateaux grey cladding



ABI Wimbledon



Packed with cottage-like charm and homely touches, get away from it all in the Wimbledon.

Swap modern life's hustle and bustle for a far gentler pace. With its blush tones and country cottage touches, the Wimbledon makes every stay rosy. Lose yourself in its timeless rural romance. Catch up around the coffee table. Savour the birdsong as it wafts gently around the Shaker-style kitchen. And at the end of the day, let the delicate floral fabrics and comforting hues of the bedroom soothe you.

What's fantastic about this holiday home?

- Central heating and double glazing
- Free-standing dining table and chairs
- Soft close hinges on doors and drawers
- Integrated slimline dishwasher
- Externally vented powered cooker hood
- Beautifully appointed Shaker-style kitchen
- Log-effect fire and surround
- Lift-up bed in master bedroom
- TV point in master bedroom and one twin room
- USB sockets in all bedrooms
- Separate en suite toilet
- Bathroom extractor fans
- Stylish light fittings with low-energy bulbs in kitchen
- 'Low E' PVCu Thermaglass double glazing

Full-height media unit with feature electric fire

Integrated microwave and fridge-freezer

Large picture windows and front-opening door option

Shaker-style fitted kitchen

Bluetooth sound system



38ft x 12ft, 2 bed



39ft x 12ft, 3 bed

Atlas Debonair



The epitome of country house living.

The sophisticated Debonair hosts a beautiful blend of traditional features with contemporary finishes, making this the epitome of country house living. The warm and cosy tartan fabrics add a touch of comfort. The rustic kitchen embodies laid-back living with a few unexpected modern elements that mix surprisingly well with utilitarian living.

Space is the key in this 13ft wide with 7ft internal wall height model

Front patio doors

En suite to master bedroom

Country-style features

Free-standing lounge and dining furniture



Access option available – 39ft x 12ft, 2 bed



40ft x 13ft, 3 bed



38ft x 13ft, 2 bed

12ft models also available to order.

What's fantastic about this holiday home?

- Free-standing suite complete with scatter cushions
- Free-standing table and chairs
- Pull-out bed to lounge
- Integrated fridge-freezer, dishwasher and washing machine
- Integrated oven and grill with four-ring hob and electric ignition
- Recirculating electric cooker hood
- Over-bed designer reading lights
- En suite WC to master bedroom
- Exterior fan to main bathroom/shower room
- Appliance shelf and socket
- Sockets with USB port
- Low-energy lighting
- Available in wheelchair-accessible format



Indulgence

Swift Vendee Lodge



Blending rural character with contemporary styling.

Escape the everyday in your own country retreat. Blending rural character with modern looks, Vendee Lodge offers residential specification for year-round getaways in the utmost comfort, with a welcoming interior providing plenty of room for the whole family.

What's fantastic about this holiday home?

- Five-burner gas hob with electronic ignition
- Central copper-effect pendant light feature
- Luxury carpet with underlay
- Free-standing two-seater and three-seater sofas with scatter cushions
- Footstool with storage
- Contemporary electric stove feature fire
- King size bed in main bedroom with lift-up storage
- Full-height luxury curtains to front aspect
- Ample storage with bedside units and over-bed cupboards in the master bedroom
- Dressing table with mirror, lighting and storage
- Window seat, TV panel and credenza drawer unit in master bedroom
- White slatted wooden blinds
- Bench seat featuring coat hooks and shoe storage
- Good provision of double electric sockets, USB points and Bluetooth

Superior construction with galvanised chassis and bonded walls

Central heating and double glazing

Integrated microwave, fridge-freezer, dishwasher and washing machine

Luxurious Duvalay mattresses on all beds

BS3632 spec available for improved insulation and other benefits

Ask for details



42ft x 13ft, 2 bed

Willerby Sheraton



A classic holiday home that is sure to turn heads.

You'll love the feel of the countryside in your Sheraton courtesy of its wood burner-effect electric fire, triple aspect windows and matching twin two-seater sofas. The fully equipped L-shaped kitchen boasts an integrated oven, microwave, fridge-freezer and a designer tap – giving you all you need for your culinary adventures. It's the perfect retreat from busy modern life.

Triple
front aspect
windows

Heritage feel
with soothing
colour palette

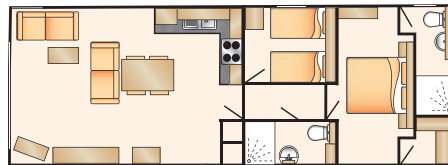
Central
heating and
double
glazing

Luxurious
master suite

Walk-in
wardrobe



40ft x 13ft 6 inches, 2 bed



42ft x 14ft 6 inches, 2 bed

What's fantastic about this holiday home?

- Two free-standing two-seater sofas, one with fold-out sofa bed
- Wood burner-effect electric fire
- Free-standing dining table and chairs and stylish Welsh dresser
- Belling oven and hob, integrated Hotpoint microwave and integrated fridge-freezer
- Brushed chrome sockets and USB outlets
- Walk-in wardrobe
- Deluxe pack including bedding, slimline dishwasher and washer dryer, Bluetooth and Simply Better Sleep mattresses
- Master suite featuring king size bed with lift-up storage and upholstered headboard
- Dressing table with mirror and stool
- En suite shower room with bath



ABI Ambleside Premier



One of our best-sellers. Imagine taking everything you love about home and transporting it to a glorious setting overlooking incredible scenery.

An elegant and beautifully designed holiday home with plenty of space, whether you're a couple or a family with kids of any age. Its sumptuous furnishings and exceptional finishing touches make your time away special, no matter how many times you visit.

What's fantastic about this holiday home?

- Integrated dishwasher, washing machine, microwave and fridge-freezer
- Soft-close hinges on doors and drawers in kitchen
- Free-standing dining table and chairs
- Upholstered footstool
- Shaver sockets
- USB socket in lounge
- Separate en suite toilet
- Exclusive pocket-sprung mattresses
- Deluxe Bluetooth sound system
- Front sliding door in lieu of French patio doors
- Satellite co-ax
- Voiles throughout
- King size bed in master bedroom (2-bed model)
- Lift-up bed in master bedroom
- TV points in master bedroom and twin room
- Bed runners and scatter cushions on all beds

Stunning kitchen with fully integrated appliances

Main bedroom with picture window bench seat

Large luxurious free-standing sofas with scatter cushions

Central heating and double glazing

Log burner-style electric fire



40ft x 14ft, 2 bed



41ft x 14ft, 3 bed



ABI Beaumont



Brimming with little luxuries and helpful mod cons.

The Beaumont – a haven that blends nature and luxury ever so elegantly – brings the gorgeous outdoors in. Floral prints, dapple soft furnishings. Wood accents create a rural yet refined vibe. Button-back details give it heaps of class. Pop your feet up on the plush ottoman. Stretch out and daydream the afternoon away in the dusky hued living room. Or enjoy equally dreamy moments adrift in the Beaumont's roomy king size bed. However you like to relax, you'll find whatever you need here.

Large
Chesterfield-
style free-
standing
sofas

Feature
fireplace with
electric fire
and matching
framed mirror

Full-height
larder unit

Luxury free-
standing
dining table
with buttoned
roll-top
dining chairs

BS3632 spec
available for
improved
insulation and
other benefits

Ask for details



42ft x 14ft, 2 bed



42ft x 14ft, 3 bed

What's fantastic about this holiday home?

- Double glazing and central heating
- Integrated microwave, fridge-freezer, dishwasher and washing machine
- Soft-close hinges on doors and drawers
- Composite kitchen sink
- Front sliding door in lieu of French patio doors
- Upholstered footstool
- Deluxe Bluetooth sound system
- Voiles throughout
- Exclusive pocket-sprung mattresses
- Lift-up king size bed in master bedroom
- Walk-through dressing area in master bedroom (2-bed model only)
- Bed runners and scatter cushions on all beds
- Separate en suite shower and toilet (3-bed model)
- En suite with domestic-style bath (2-bed model)
- Carpet underlay throughout



Indulgence

Willerby Vogue Classique



Homely, with a timeless feel.

The Vogue Classique is the elegant culmination of the very best of Willerby's design work and materials. Combining truly impressive living space with understated style, this holiday home is sure to make you the envy of your neighbours on park – a true timeless Classique.

What's fantastic about this holiday home?

- Integrated Hotpoint microwave, Indesit washer/dryer and dishwasher
- Six-seater luxurious dining suite with plush upholstered dining chairs (four-seater option available)
- Electric fire
- Two-seater sofa with integrated power footrest and USB outlet
- Additional two-seater sofa with fold-out sofa bed
- Scatter cushions
- Master bedroom featuring king size bed, walk-in wardrobe, large dressing table and en suite bathroom
- Family shower room with thermostatically controlled shower
- Feature radiators and brushed chrome sockets and USB outlets
- Integrated Bluetooth MP3 sound system
- Pendant lighting

Striking apex design with Velux window to kitchen and bedroom

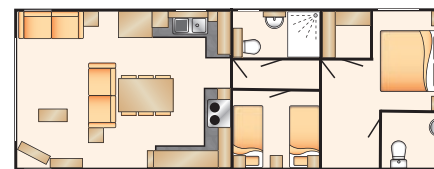
BS3632 spec available for improved insulation and other benefits

Central heating and double glazing

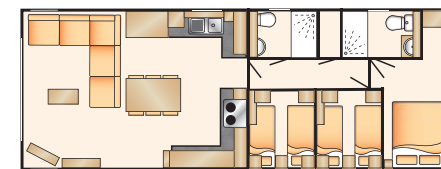
3ft-wide single beds in twin bedroom

American-style fridge-freezer with ice water dispenser

Air conditioning option available, ask for details.



43ft x 13ft, 2 bed



43ft x 13ft, 3 bed

Haven Special Edition

Stand out from the crowd with a holiday home with a difference.

After something a little different? We can help you find a holiday home that has something extra special. Our Haven Special Edition range, as with our handpicked models, are made in the UK by leading manufacturers, but... we have limited stock of these.

It's a chance to grab yourself something a little more unique, whether it's got a centre lounge or more of a contemporary finish, it'll leave you with a sense of exclusivity and that 'wow' feeling.

If you have anything specific in mind, why not pop along to the Caravan Sales office and we'll see what is best suited to you.

Features of these special edition vans can include:

- Cloakroom
- Mirrored dressing room with stool
- Options to have a king size bed
- Integrated MP3 sound system
- Over-bed designer reading lights
- LED illuminated vanity mirrors
- Extra insulation

Accessible
unit available

A unique style

Made by leading
manufacturers

Fresh and new
to the market

Limited stock available



Atlas Debonair Access



ABI Langdale



Willerby Castleton

Special Edition

Our manufacturers



Introducing Swift

Swift is Europe's No.1 brand of leisure vehicles. Based in Cottingham, East Yorkshire, the company manufactures touring caravans, motorhomes and holiday homes. Swift is one of the leading manufacturers in the holiday home market, through building innovative, desirable and well-designed holiday homes that set the standard in quality, specification and value for money.

Swift – creating smiles for life.



Introducing ATLAS

Atlas know that even when you're on holiday, you still want all the home comforts that you're used to. That's why Atlas work hard to achieve exactly what you want.

Whether it be a country retreat or an idyllic coastal getaway, they not only think about quality but also all the little luxuries which will make your holiday experience complete.

Priding themselves on the level of craftsmanship that goes into the manufacture of each model. With many of their employees having worked at Atlas for most of their lives, you can be confident that you will get so much more than just a holiday home!



Introducing ABI

For over four decades, ABI have been building exceptional quality handcrafted holiday homes that generations of British holidaymakers have enjoyed as their home away from home. But more than that, with every nut, bolt, screw and nail, they have been dedicated to increasing their knowledge, expanding their expertise and developing their technology, year after year.



Introducing Willerby

For over 70 years Willerby has been the UK's largest manufacturer of holiday homes and lodges. They love designing practical and beautiful homes for parks not only in the UK, but also across the world.

When you think of Willerby, think of your perfect home from home, where the details are better than they need be and more affordable than they should be.

There is no better feeling than stepping into your new home for the first time to start creating memories that will last a lifetime.

Pop in and see us in the Caravan Sales office for more information