

Swim Lessons
Curated by Dasha Aksenova

Zhi Wei Hiu | Bradley Marshal | Montana Simone | Hanna Umin

April 3 - May 2, 2026



Zhi Wei Hiu
Olhar é o necessário instrumento que, depois de usado, jogarei fora,
2024
Inscribed glass, silver gelatin print, silverpoint, cast sterling silver L-hooks,
soft silver solder, zinc oxide gesso
8 × 10 × 1/4 in (20.3 × 25.4 × 0.6 cm)
ZWH24MM013



Zhi Wei Hiu
Looking is the necessary instrument that, once used, I shall discard,
2024
Inscribed glass, silver gelatin print, silverpoint, cast sterling silver L-hooks,
soft silver solder, zinc oxide gesso
8 × 10 × 1/4 in (20.3 × 25.4 × 0.6 cm)
ZWH24MM014



Zhi Wei Hiu
Looking is the necessary instrument which, once used, I shall put aside,
2024
Inscribed glass, silver gelatin print, silverpoint, cast sterling silver L-hooks,
soft silver solder, zinc oxide gesso
8 × 10 × 1/4 in (20.3 × 25.4 × 0.6 cm)
ZWH24MM015



Zhi Wei Hiu
Untitled (Score), 2026
Silver gelatin print, 4×5 sheet film drying frame, borosilicate glass,
neodymium magnets
4 × 5 × 1/2 in (10.2 × 12.7 × 1.3 cm)
ZWH26SC016



Zhi Wei Hiu
Untitled (Score), 2026
Silver gelatin print, 4×5 sheet film drying frame, borosilicate glass,
neodymium magnets
4 × 5 × 1/2 in (10.2 × 12.7 × 1.3 cm)
ZWH26SC017



Zhi Wei Hiu
Untitled (Score), 2026
Silver gelatin print, 4×5 sheet film drying frame, borosilicate glass,
neodymium magnets
4 × 5 × 1/2 in (10.2 × 12.7 × 1.3 cm)
ZWH26SC018



Zhi Wei Hiu
Untitled (Score), 2026
Silver gelatin print, 4×5 sheet film drying frame, borosilicate glass,
neodymium magnets
4 × 5 × 1/2 in (10.2 × 12.7 × 1.3 cm)
ZWH26SC019



Zhi Wei Hiu
Breath, 2026
Exposed 4×5 sheet film, water, encaustic wax, borosilicate glass tube,
steel sphere, 10 sheets of 16×20 silver gelatin paper, breath
Dimensions variable
ZWH26SC020



Bradley Marshall
Waistline and Timeframe, 2025
Sand-blasted steel, stainless steel rigging wire, powder coated steel,
high school ring, epoxy, plastic cup
45 × 29 1/2 × 15 in (114.3 × 74.9 × 38.1 cm)
BM25SC001



Bradley Marshall
Rolltop Adherent, 2024–2025
Sand-blasted steel, bronze, aluminum foot measuring device, acrylic,
vinyl film, sunflower seeds, hardware
18 × 15 1/2 × 12 in (45.7 × 39.4 × 30.5 cm)
BM25SC002



Montana Simone
Corner Slapper, 2025
Steel, latex, corner, motor
32 × 32 × 12 in (81.3 × 81.3 × 30.5 cm)
MS25SC001



Hanna Umin
Polynices, 2026
Found objects, cast resin, soldered brass
5 1/4 × 3 × 1 in (13.3 × 7.6 × 2.5 cm)
HU26SC001



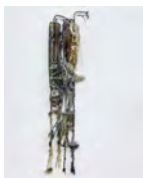
Hanna Umin
Bathsheba, 2026
Found objects, cast plaster, cast resin, soldered brass
4 1/2 × 1 1/2 × 1/2 in (11.4 × 3.8 × 1.3 cm)
HU26SC002



Hanna Umin
Seraph, 2025
Found objects, cast resin, soldered brass, wire, epoxy clay, fingernail
clippings
7 × 2 1/2 × 1 1/2 in (17.8 × 6.4 × 3.8 cm)
HU25SC003



Hanna Umin
Sphynx, 2026
Found objects, cast resin, soldered brass, nicotine tar
4 × 1 3/4 × 2 in (10.2 × 4.4 × 5.1 cm)
HU26SC004



Hanna Umin
Haemon, 2025
Soldered brass, cast resin, found objects, trapped mouse pelt, vial of the
artist's smoker phlegm, artist's blood, fingernail clipping
15 3/4 × 4 1/4 × 2 1/4 in (40 × 10.8 × 5.7 cm)
HU25SC005



Hanna Umin
Saccomazone Players, 2024
Wood, plaster filler, latex paint, oils, shellac, brass, epoxy clay, fingernail
clippings
18 × 29 1/2 in (45.7 × 74.9 cm)
HU24MM006