

eurotech

A RAYNOR GROUP COMPANY



SCAN ME

DAKOTA 2 WITH ARMS

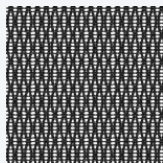
7014

THIS MULTI-PURPOSE CHAIR WITH BREATHABLE MESH BACK CAN BE USED IN WAITING AREAS, OFFICES, EXAM ROOMS OR JUST ABOUT ANYWHERE YOU WANT TO MAKE GUESTS FEEL COMFORTABLE.

DOVE 5806



BLACK PM01



*Dakota Guest 7014 Mesh Back (2 Per Carton)
with Optional Casters*

fabrix
express

Available in additional Fabrix options



CERTIFICATIONS

Meets/Exceeds ANSI/BIFMA
GREENGUARD (97% Recyclable)

DIMENSIONS

OVERALL WIDTH: 27"

OVERALL DEPTH: 21"

HEIGHT: 36.5-40"

SEAT HEIGHT:

18" (LOWEST POINT) 21.5" (AT HIGHEST POINT)

BACK: 19" X 20" (W X H)

SEAT: 20" X 19" (W X D)

WEIGHT: 20.5 LBS

CUBE: 6.0

