

eurotech

A RAYNOR GROUP COMPANY



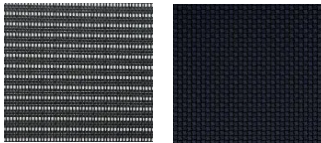
SCAN ME

APOLLO DRAFTING CHAIR

DFT9800

THE APOLLO IS A PERENNIAL FAVORITE, COMBINING VALUE, COMFORT, ADJUSTABILITY AND QUALITY, AND FEATURING A BREATHABLE, COLOR-COORDINATED MESH BACK THAT MATCHES THE COMFORTABLY CONTOURED AND PADDED WATERFALL SEAT.

BLACK MS11 DOVE 5806



fabrix
express

Available in additional Fabrix options



CERTIFICATIONS

Meets/Exceeds ANSI/BIFMA
GREENGUARD (97% Recyclable)

DIMENSIONS

OVERALL WIDTH: 25"
OVERALL DEPTH: 24"
HEIGHT MIN/MAX: 43.5-56"
SEAT HEIGHT:
23.2" (AT LOWEST POINT) 32.7" (AT HIGHEST POINT)
BACK: 19.5" X 20" (W X H)
WEIGHT: 58 LBS
SEAT: 20.5" X 19.3"

FEATURES

- Seat Height Adjustment
- Arm Height Adjustment
- 2.8" Ratchet Back Height Adjustment
- Waterfall Seat
- Width Adjustable Arms

**With options of aluminum base*

