

A large, modern glass skyscraper with a blue-tinted facade, set against a clear blue sky with some white clouds. The building is the central focus of the top half of the page.

CONFIDENTIAL INTERNATIONAL COMMERCIAL INSTITUTION

CASE STUDY

CASE STUDY SUMMARY

AVERT **PS**

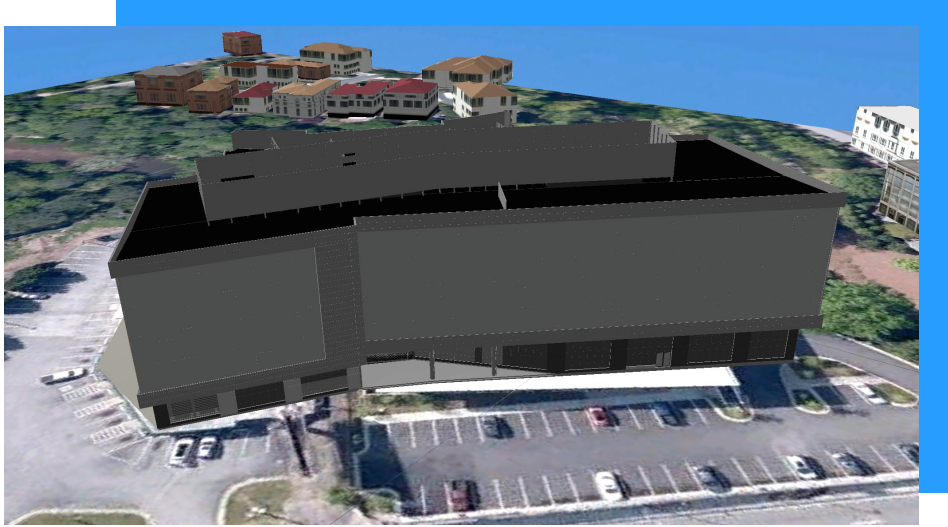
PHYSICAL SECURITY

AVERT Physical Security (AVERT-PS) is a unique Security Risk Assessment (SRA) software used to perform a Vulnerability Assessment (VA) of the facility along with providing the capability to visualize, quantify, assess and optimize security posture. This solution's holistic and integrated approach, delivers accurate, measurable, and repeatable assessments of physical security design and operations.

OBJECTIVE

A confidential International Commercial Bank was updating their headquarters and various major branch positions and commercial spaces. These structures included trading floors, data centers, cash transit and storage, sublet floors, and public spaces. If critical areas such as the trading floor, data centers, or executive suites were rendered inoperable or damaged as a result of a physical attack could result in significant losses. Protecting these areas while limiting costs led them to pilot AVERT and eventually expand the software to new construction.

SOLUTION



ARES used AVERT-PS to create Digital Twin models of critical floors and interiors. These models were used to identify gaps in existing coverage and provide options for new camera layouts. These models also incorporated security force response for scenarios such as vault robbery, in infrastructure denial, and executive protection. Subsequent risk assessments of each asset were then performed to evaluate the benefit and costs associated with each proposal.

RESULTS



COST SAVINGS For example, a new security design was identified and quantified at 3 sites, reducing costs to \$100-400k USD while providing comprehensive security coverage.



ENHANCED SECURITY—Gaps identified and addressed to increase coverage. Incorporated security responses to further prepare the existing infrastructure.

