

ICS2 for Ferry

Get ready for new shipping regulations with DFDS



Table of Contents

- What is ICS2?
- How will ICS2 be rolled out?
- Routes affected by ICS2
- What does ICS2 mean for your business?
- ICS2 data requirements
- How can DFDS help you handle ICS2?
- What should you do to prepare for ICS2?
- Get in touch

What is ICS2?

ICS2 is the updated version of the EU’s original “Import Control System”, which is used to issue ENS (Entry Summary declarations). It is a pre-arrival IT security system designed to process cargo information, support risk assessments, and bolster safety and security at EU borders.

What is the aim of ICS2?

ICS2 aims to protect the EU border by collecting data on all goods entering the EU before their arrival. It serves as a pre-arrival notification for safety and security risks, which must be submitted via the EU’s Shared Trader Interface system.

What does ICS2 mean for your business?

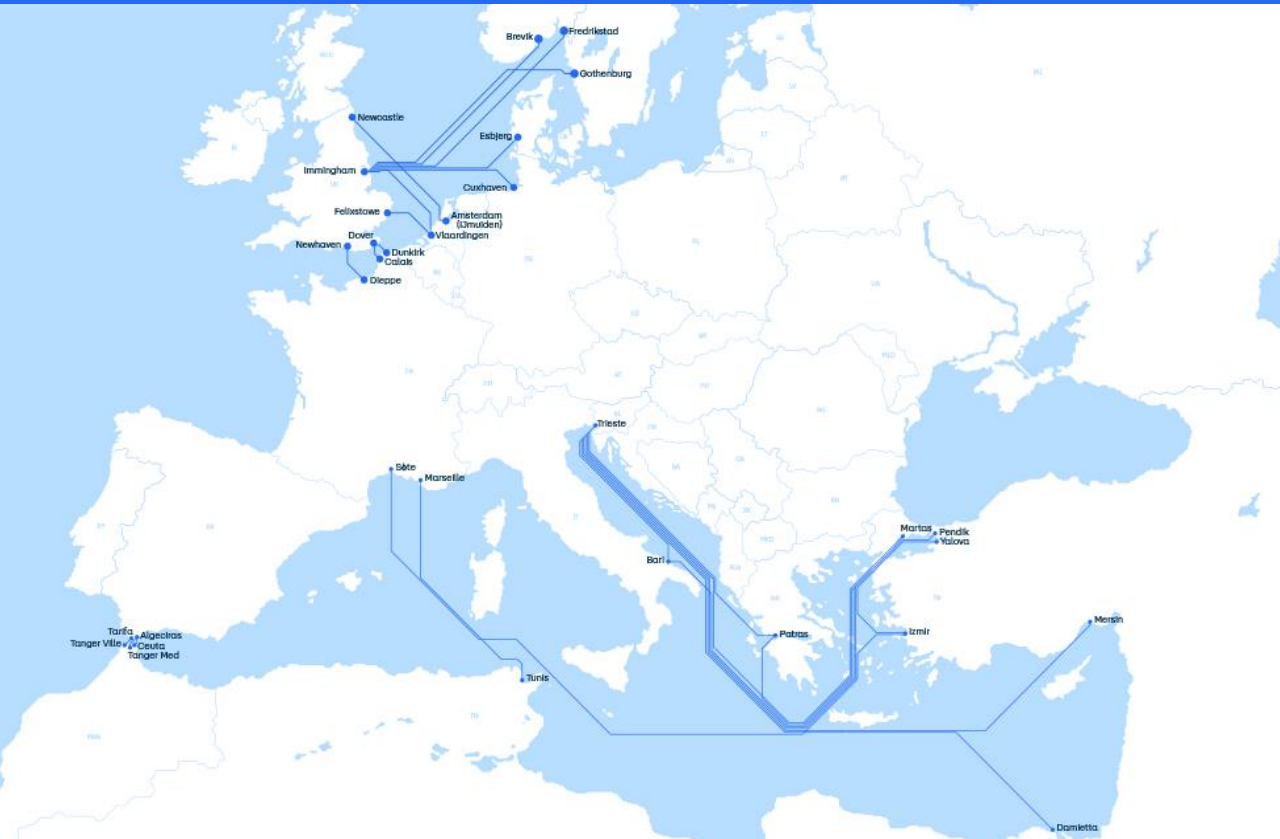
The new regulation will require transporters carrying cargo into the EU to provide more detailed information via an ENS and submit it through ICS2 before the cargo arrives at the border. Authorities will assess this information and either clear the cargo for entry, request further details, or deny its entry into the EU.

Important note

ICS2 is not a customs system—national customs authorities will still handle all customs documentation. ICS2 specifically addresses pre-arrival safety and security assessments.

Routes affected by ICS2

ICS2 requirements will apply when shipping on the following routes.



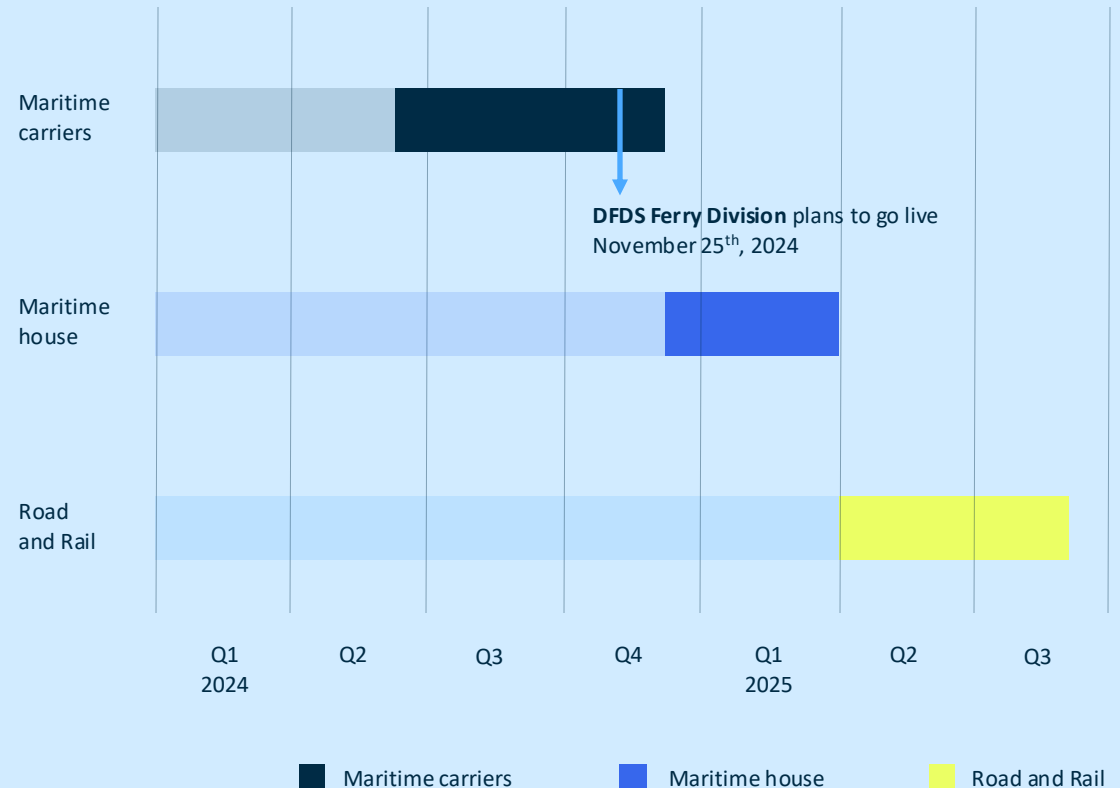
ICS2 DFDS routes affected as of 25th of November:

*Routes that are postponed by national authorities and must connect like road and rail between April and September 2025.

BU	Arrival Country	Route
North Sea	NL	Immingham - Vlaardingen Felixstowe - Vlaardingen Newcastle - IJmuiden
North Sea	NO	Immingham - Fredrikstad Immingham - Brevik
North Sea	DK	Immingham-Esbjerg
North Sea	SE	Immingham - Gothenburg
North Sea	DE	Immingham - Cuxhaven
North Sea	BE	Immingham - Zeebrugge
Channel & France	FR	Dover - Calais Dover - Dunkirk Newhaven - Dieppe
Mediterranean	FR	Tunis - Marseille Yalova - Sete Izmir - Sete
Mediterranean	IT	Pendik - Trieste Pendik - Bari Mersin - Trieste Martas - Trieste Marmara Ereğlisi (Martas) - Trieste Domietta - Trieste
Mediterranean	GR	Pendik - Patras
Strait of Gibraltar	ES	Algeciras - Tanger Med Algeciras - Ceuta Tarifa - Tanger Ville

How will ICS2 be rolled out?

- Maritime carriers must connect with ICS2 **between June 3rd and December 4th, 2024**
- **DFDS Ferry Division** plans to go live on November 25th, 2024
- Maritime house filers must connect between **December 4th, 2024**, and **April 1st, 2025**
- Road and Rail carriers must connect between **April and September 2025**, including ferry operations through the **Channel, the Strait of Gibraltar, and the Mediterranean routes to France.**



Filing Roles & Data Matching Process

In the EU STI system, the filing process involves different roles for single and multiple filers.

This slide outlines the responsibilities of carriers and customers, explaining how their data is matched using key identifiers like the EORI number and Master Bill of Lading. Accurate and timely filing ensures smooth processing and data availability.

Roles for filing

For Single Filers

Carrier = Filer

For Multiple Filers

Carrier = Master Filer

Customers = House Filer

Data matching in EU STI

Carrier (Master Filer)

Provides Master Bill of Lading + EORI of the House Filer

House Filer

Provides Master Bill of Lading + EORI of the Master Filer

Note: Data is available in the STI system for 200 days.

What does ICS2 mean for your business?

ICS2 means you will have to provide more information about your shipments via an ENS prior to arrival at the EU border. This likely means you will have to devote more time and resources to ensure the information in the ENS is accurate and that it is submitted on time. You will be held responsible and your cargo may be denied entry to the EU, if your filing isn't accurate or completed on time.



Multiple Filing

Current booking requirements

- Unit Number
- ENS Filing Type
- Quantity
- Weight
- Cargo Description

New booking requirements

- Package Type
- HS Code
- Place of acceptance (UNLocode or place + Country code)
- Place of delivery (UNLocode or place + Country code)
- UN number (If Hazardous content)

Single Filing

Current booking requirements

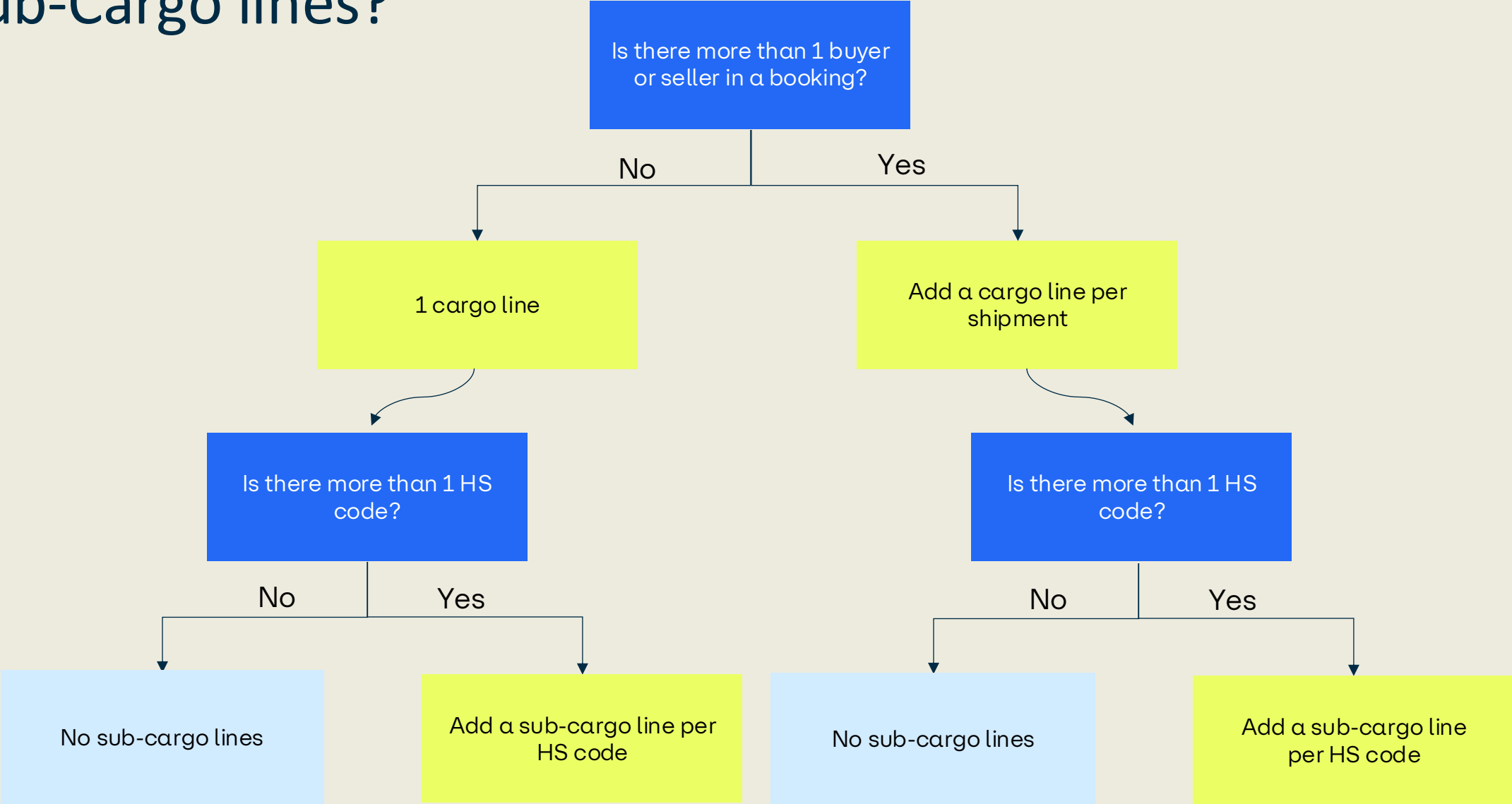
- Unit Number
- ENS Filing Type
- Quantity
- Weight
- Cargo Description

New booking requirements

- Package Type
- HS Code
- Place of acceptance (UNLocode or place + Country code)
- Place of delivery (UNLocode or place + Country code)
- UN number (If Hazardous content)
- Buyer – Full address
- Seller – Full address

* The additional booking requirements for single filing.

Cargo lines or Sub-Cargo lines?



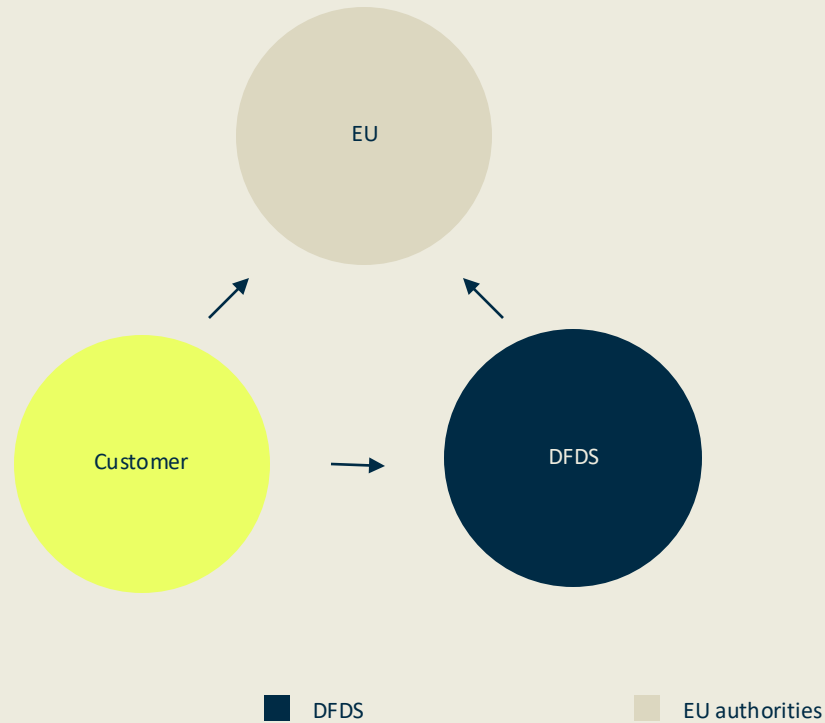
How can DFDS help you handle ICS2?

DFDS can assist you with ICS2 requirements by providing either Multiple Filing or Single Filing.



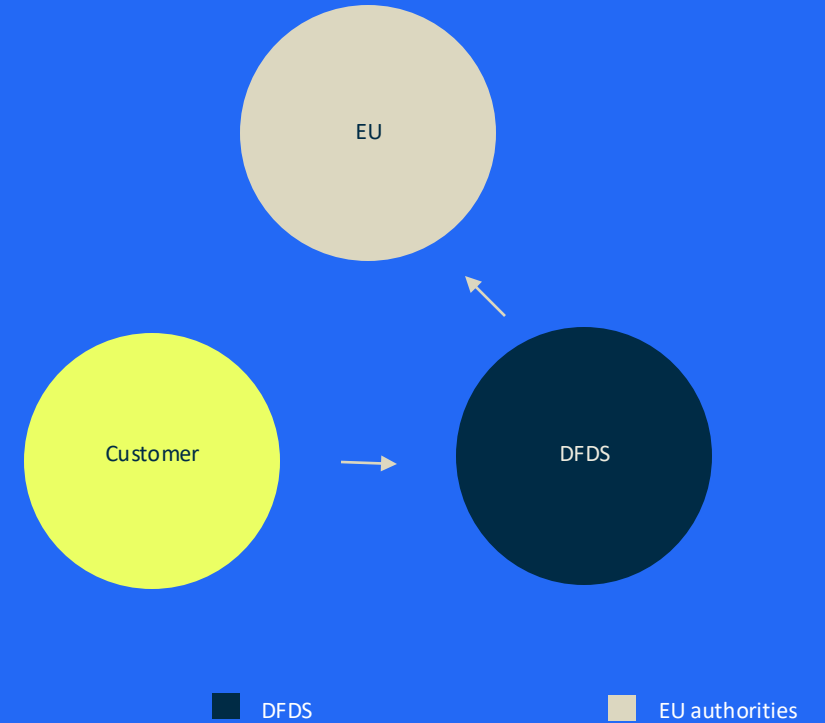
Multiple Filing

Customers file all cargo details on a house level directly to the EU Shared Trader Interface system and DFDS submit the master details.



Single filing

Customers must provide all data to DFDS, who then creates and sends the full ICS2 filing to the EU authorities.



What should you do to prepare for ICS2?

As a customer of DFDS, you should evaluate whether your business is going to use single or multiple filing.

If you choose multiple filing, you need to:

- Setup a system to connect with the EU STI system
- Connectivity test must be done for the EU STI system
- Ensure you have all details available for filing

If you choose single filing, you need to:

- Ensure you have all necessary details when ICS2 goes live
- Ensure all data you provide is accurate
- Ensure you provide all data on time

Abbreviations

ICS2 - Import Control System 2

ENS - Entry Summary Declarations

MRN - Master Reference Number

STI - Shared Trader Interface system (the name of the new EU system for ENS filing according to ICS2 regulations)

Single filing - DFDS file all details

Multiple filing - DFDS file master details and customers file house details

Master details - All details except buyer and seller

House details - All details including buyer and seller

Learn more

Click below to read more about ICS2

→ [ICS2 Overview](#)

→ [ICS2 FAQ](#)

→ [ICS2 with DFDS](#)

→ [ICS2 Webinar](#)





Thank you