

Thursday 18th July 2019

Kia ora shareholders,

As we close the second week of school holidays with recent snow and the incredible Sky Waka now open, I wanted to reflect on the AGM held in May and provide some additional updates as we head into winter.

2019 AGM

We held our 66th AGM at the Happy Valley Bistro on Saturday 11th May 2019, we presented our annual report and accounts and reflected on the previous 2018 season.

Appointment of Directors

In accordance with the Constitution the following Directors retired by rotation, and being eligible, offered themselves for reappointment:

- a) Murray Gribben
- b) Debbie Birch

The meeting confirmed the reappointment of these Directors.

Appointment of Auditors

The meeting confirmed the reappointment of Deloitte as auditors to the company and the Directors will be authorised to determine their remuneration.

The approved minutes of the 2019 AGM have been attached for your reference.

Again, I would like to thank my fellow Directors and management for their contribution during the previous 2018 season.

2020 AGM

I can confirm that the 2020 AGM will be held on Saturday 9th May 2020 with the location to be confirmed.

2019 Australasian Reporting Awards

Our effort since we started our non-financial reporting journey in 2016 has been recognised and our annual report for the financial year ending 30th April 2018 received a bronze award at the Australasian Reporting Awards in June 2019. We continue to identify areas for improvement in our Annual Reports and believe it's important to present a balanced view, highlighting items that we have had success in, as well as addressing those in which we haven't.

Mike O'Donnell's resignation

I have accepted Michael (MOD) O'Donnell's resignation as a Director. I would like to thank MOD for his contribution to the Board and support for RAL during his time as a director.

John Foley's appointment as a Director

John was engaged with RAL as a consultant in March 2019 and then appointed as a Director in June 2019. He will be seeking election by shareholders at our 2020 AGM. John has an extensive background in communications and advertising – starting out in New Zealand and going on to hold CEO and board roles for leading multinational advertising agency Saatchi and Saatchi in Asia and Australia.

With a passion for the business of sports and recreation, John now operates his own sports marketing and consultancy business - working with leading brands, sports organisations and elite athletes. John has enjoyed a lifelong obsession with Mt Ruapehu and the surrounding region and now loves sharing that with his young family at any opportunity. With John's background, skills and experience he has already made a valuable contribution and has been a great addition to the Board.

Chief Financial Officer (CFO)

I am very happy to announce the promotion of Jessie Watling to the new position of CFO.

Jessie joined the team as the Finance Manager in October 2013. She excelled in the role and has taken on increased responsibility over the past five years. Jessie was promoted to General Manager Finance in 2017 taking on leadership of our property, urgent care clinics, IT, development and systems teams, in addition to the finance team. Jessie has been our Company Secretary since 2016 and will continue with these duties.

Over the past few years the company has invested \$55m in new assets and we have big plans for the future with the next wave of development at Turoa progressing rapidly. The increasing complexity of our balance sheet and the workload associated with raising \$100m of new investment capital means we require specialist skills in this space and a more dedicated focus. As CFO, Jessie will take a lead role in managing our investor relations and putting together the capital funding we need to continue executing our \$100m investment strategy, she will also provide cover for the CEO when Ross is overseas or on leave.

It is an absolute privilege to promote staff from within, so please join me in congratulating Jessie on this promotion.

Winter 2019

Sky Waka

The Sky Waka gondola opened to the public on the 2nd July 2019. This is a fantastic piece of infrastructure and I highly recommend you all come to visit this incredible piece of engineering. The Sky Waka gondola travels 1.8 km's through one of the North Island's most rugged and spectacular landscapes high on Mt Ruapehu, past waterfalls and snow-laden peaks. The ride will be equally as spectacular in the summer months.

The gondola travels from the Top of the Bruce base area directly to the Knoll Ridge Chalet and at peak times it will transport 2,400 people per hour over the 1.8km in approximately 5 minutes. The Sky Waka has fifty gondola cabins with floor to ceiling glass for breath-taking views, internal ski racks, audio and lighting and individual leather seats. It offers business-class luxury to passengers befitting of the UNESCO Dual World Heritage status of Whakapapa Ski Area. Each cabin accommodates 10 passengers and has more than 2m of internal clearance.

Until the upper mountain ski fields open Sky Waka will only be operating for sightseeing. Once passengers reach Knoll Ridge Chalet they can experience the newly renovated dining areas. At 2020m above sea level, with breath-taking views of the Pinnacles and valley below, Knoll Ridge Chalet is open year round for a breath-taking dining and sightseeing experience.

Again, we would like to acknowledge and thank the Provincial Growth Fund (PGF) who provided a \$10 million loan to RAL for the construction of the new gondola. The rigour of the PGF process gave the feasibility credibility when we pitched the bond to investors. Mr Mark Dunatjschik played a critical role, providing an underwrite which allowed us to proceed with construction while we finalised the bondholder negotiations.

A group of experienced investors from various Ngati Tuwharetoa entities came together, formed the Tuwharetoa Gondola Limited Partnership (TGLP) and took the largest stake in the bond offering at \$9.5m, or 66% of the bonds on offer – this huge contribution is what ultimately allowed the project to progress, we simply couldn't have done it without the support and vision of Ngati Tuwharetoa's network of experienced investors who quickly connected the dots between the economic, social and cultural opportunities that could be leveraged through this key asset in their rohe.

In addition to the PGF and the TGLP we are extremely grateful for the contribution of all investors who have invested to make Sky Waka possible, this also includes BayTrust, Māori Investments Ltd, Marotiri – Pureora Forest Hapu Cluster (FHC) Trust and Taupo and Ruapehu District Councils.



Knoll Ridge Chalet

Over the summer months our team have been extremely busy refurbishing the Knoll Ridge Chalet to provide three distinct dining areas.

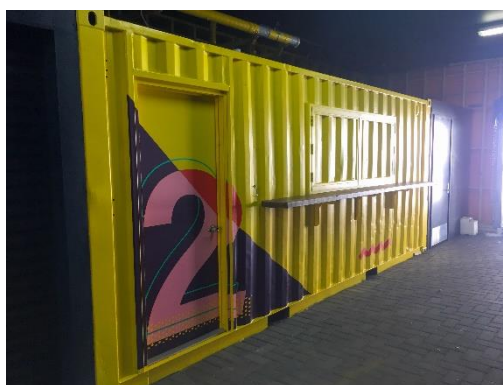
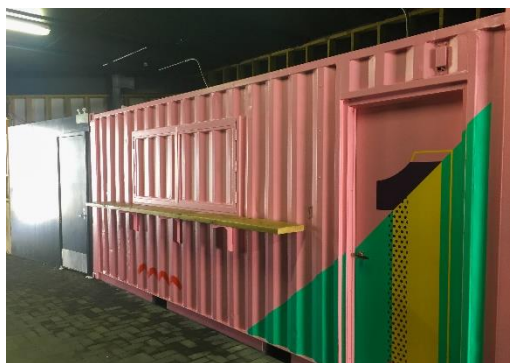
The Pinnacles Restaurant (Nga Tohu) boasts breath-taking views with floor-to-ceiling windows looking out over the Pinnacles and the valley below. New buffet breakfast and dining is offered along with an afternoon tea option.



Pataka (The Larder) offers fantastic barista coffee and an incredible à la carte menu offering classic New Zealand café style cuisine.



Four Peaks Alley has a selection of tasty dishes for the perfect grab and-go meal Food truck style. It is in a brand new refurbished downstairs area of the Chalet that was previously staff rooms and maintenance areas.



Alpine Café at Turoa

Over summer the downstairs of the Alpine café at Turoa has received a minor “freshening-up”, making better use of internal space and customer flow. The old serve-yourself school-cafe approach has gone - and has been replaced with a faster crew-serve approach.

The standalone coffee counter and tills have both been incorporated into the service allowing internal capacity to increase by 40%. The menu offering has been simplified to a quality pizza/pasta/salad offering.

Giant Café

Over summer, the Giant cafe was refurbished. It now has a more contemporary look and feel. The café has been redesigned to allow faster ordering and service, and quicker table turnover. Seating has also changed to a mix of low seating, seated bar leaners, and standing bar leaners - allowing internal capacity to increase by 15%.

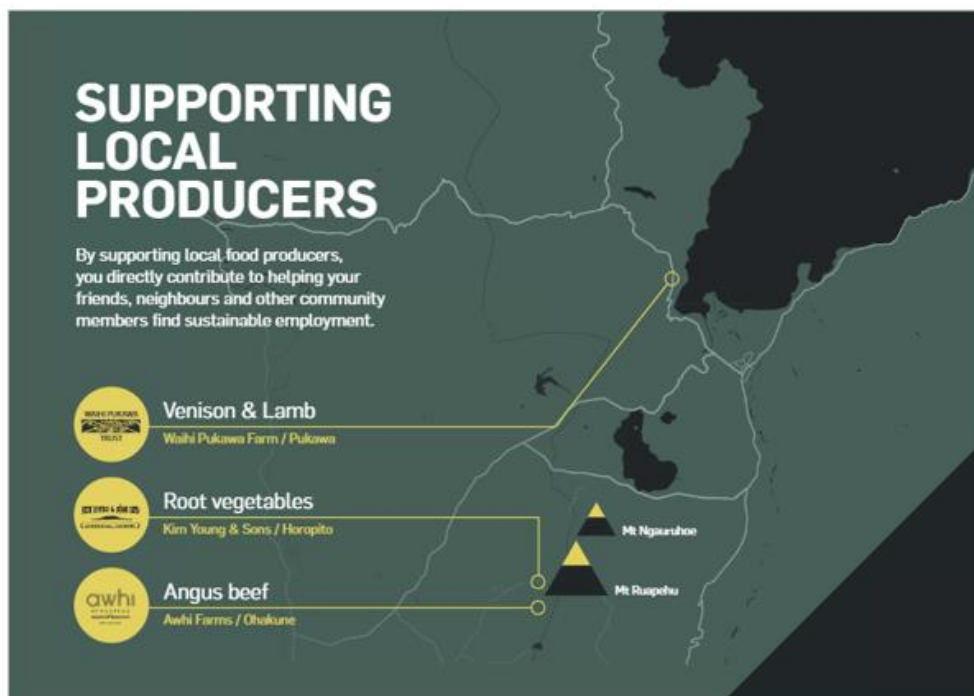
Taking the 2018 customer feedback on board we have brought back barista coffee at the Giant and food options are a heat & serve simplified offering, with a mix of hot to-go options, and a quick-serve bain marie offering (served warm in flatbread or salad, with Argentinian steak, Jamaican jerk chicken, Turkish falafel).



Paddock to Plate

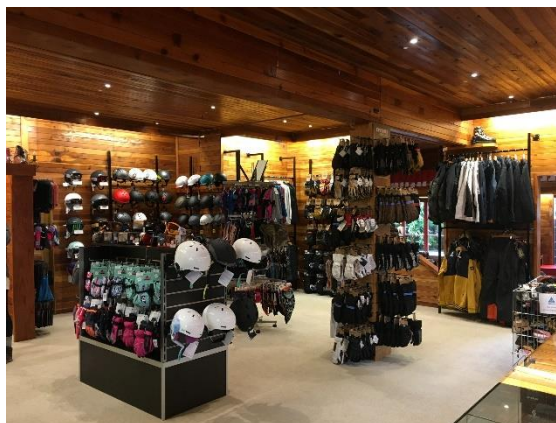
Our team have introduced a Paddock to Plate concept where we are extremely proud to serve dishes featuring produce sourced from local suppliers in a range of exciting new dining options across both sides of the mountain:

- Locally sourced beef from Awhi Farms in Ohakune
- Locally sourced venison and lamb from Waihi Pukawa Farm in Pukawa
- Locally sourced vegetables from Kim Young & Sons in Horopito



Ohakune Snow Depot

In early June we opened the brand new Ohakune Snow Depot at the Junction in Ohakune. Customers can purchase passes, lessons, rentals, programmes and full hardware retail in store. Our customers can also have their equipment serviced as they browse the store.



2019 Transport

RAL has undertaken a transport pre-qualification exercise and awarded a 5-year exclusive supply agreement for the public transport shuttle services Taumata Ikaroa. The new brand Taumata Ikaroa is a partnership between Te Urungi o Ngati Kuri Ltd, the commercial arm of Ngati Kuri Trust Board, and Sand Safaris with a placeholder being held for Iwi/Hapu on the mountain.

The new 2019 service commenced on Friday 5th July with a fleet of brand new 4WD buses. Tickets cost \$20 per person return and are available from the ticket machines at the Park and Ride locations in National Park and Ohakune and some bus pick up locations. Tickets can also be purchased on mountain or at the Mt Ruapehu Snow Depots in Taupo and Ohakune.

Over \$5 million of investment has been made into the new fleet, which is comfortable, safe and has less emissions, something crucial in operating this service in a UNESCO Dual World Heritage National Park. The new buses will also meet the new Alpine Vehicle Specification and Code of Practice (Code).

RAL took a lead role coordinating an industry-wide review and the development of this new Code with the New Zealand Bus and Coach Association to ensure the increased risks of operating on alpine roads are clearly understood and well managed by operators across New Zealand's alpine areas. Operators have agreed to voluntary standards which lift safety across road management practices, vehicle selection, equipment handling and storage, and driver recruitment and training.

The 4WD buses are ideal for the alpine environment with under carriage storage for equipment, seat belts and large windows for taking in the incredible views of Mt Ruapehu.

Turoa Developments 2019

Many of you will be interested in how Turoa redevelopment plans are progressing. The project is a multi-year investment which includes addressing the Giant, Parklane and Movenpick chairlifts, developing additional beginner lifts and facilities at the Wintergarden area, upgrading snowmaking infrastructure and café facilities.

Phase one of the project will take place this summer, and we can now announce that we have signed a contract with Doppelmayr to complete a major upgrade of the Giant chairlift starting immediately after we close this season. After 41 years of hard service the Giant is very deserving of this upgrade and we saw the importance of this lift last year when the High Noon was out of action, so it was ultimately an easy decision for the board when

assessing the first priority for the redevelopment. We have also now completed a significant snowmaking expansion providing top to bottom cover on the Giant which will be further enhanced by some pump upgrades this summer.

In parallel with the Giant project, we will commence the infrastructure upgrades required in preparation for the construction of a new high-capacity gondola lift to replace both the Parklane and Movenpick chairlifts subject to receiving Works Approvals. This will include upgrading the electrical infrastructure, relocating snowmaking equipment and other key enabling upgrades.

The consent process for the new Gondola is underway with stakeholder consultation and the completion of various impact assessments. We hope to receive our consent and Works Approval before next winter season. This will allow us to commence construction of the new Gondola in November 2020 assuming the capital raising, consent and works approval processes are all complete.

Missing Shareholders

We are continuing to improve engagement with a wide range of our stakeholders, and it is pleasing that of our 4,061 shareholders we now communicate by email with 1,117 of them. After three years of trying to contact our “missing” shareholders we now want to tidy up our share register further.

The current position of our 4,061 shareholders is that we have no contact details for 50% of them (2,011 shareholders representing 21% of the shares on issue). Attached to this update is a formal notice regarding the forfeiture of the shares if you would like a list of the missing shareholders please contact the Company Secretary. Forfeiture of the shares will occur on the 31st July 2019. Shareholders have 12 months to make themselves known to the company.

We thank you for your continued support and look forward to welcoming you on the slopes for winter 2019.

Nga mihi,



Murray Gribben
Chair
Ruapehu Alpine Lifts Limited

18th July 2019

Ruapehu Alpine Lifts Limited – Missing Shareholders

NOTICE UNDER CLAUSE 11.11 OF THE RUAPEHU ALPINE LIFTS LIMITED CONSTITUTION

Pursuant to section 87 of the Companies Act 1993, Ruapehu Alpine Lifts Limited is required to maintain a share register which includes the names and latest know address of each shareholder.

We have several shareholders on our share register that we have no contact details for and over the years we have been making regular effort to track them down.

Clause 11.11 of the Constitution enables the Board to forfeit any shareholders shares who in the reasonable opinion of the Board is no longer able to be contacted by the Company in writing. Pursuant to this clause, the Board has passed a resolution to forfeit the shares of those shareholders who the Board has not been able to contact. This will take place on the 31st July 2019.

Clause 11.12 of the Constitution enables the Board to re-issue the forfeited shares within 12 months of forfeiture should any shareholder make themselves known to the Company and provides sufficient contact details for future correspondence and communications.

The relevant extracts from the Constitution is set out below. Attached to this notice is current list of shareholders who the Company have no contact details for. If you believe you have contact details for any of the listed shareholders, please contact the Company Secretary:

Attention: Company Secretary
companysecretary@mtruapehu.com
Private Bag 71902
Mt Ruapehu 3951



Murray Gribben
Chair
Ruapehu Alpine Lifts

RAL Company Constitution Extract

11.11 Missing Shareholders:

- a. If the Board reasonably believes that a shareholder is no longer able to be contacted by the Company in writing without the Company having to incur unreasonable time or expense in locating that shareholder, the Board may by resolution forfeit that shareholders shares; and
- b. Subject to Regulation 11.12, Regulations 11.4 to 11.7 shall apply with such modifications as are required in the circumstances

11.12 Reissue in certain circumstances: The Company shall not re-issue or sell any shares forfeited under clause 11.11 within 12 months of such forfeiture. In the event that within 12 months of forfeiture a missing shareholder that has had its shares forfeited, makes it known to the Company that he or she is contactable in writing, and provides appropriate information in this regard to the Company, the Board shall annul the forfeiture.

**RUAPEHU ALPINE LIFTS LIMITED
MINUTES OF THE 66TH ANNUAL GENERAL MEETING
HELD ON SATURDAY 11 MAY 2019
AT HAPPY VALLEY BISTRO, WHAKAPAPA SKI AREA AT 3.00PM**

Directors Present: Messers M Gribben (Chair), D. Fraser, G. Taylor, M. O'Donnell, Ms M. Trapski and D. Birch

Apologies: Aaron Tasker, Moppy Williams, Stewart Ewington, Scott and Jan Huppert, Ian Wilton, John McGregor, Mike Johnson, David Pilkington, Dr Tom Patterson, Dave Mazey, Moppy Williams

Welcome: The Chair noted we had a quorum and welcomed those in attendance to the 66th Annual General Meeting.

1.0 Presentation of Annual Report for the year ended 30 November 2019

In presenting the Annual Report the Chair spoke to:

- We will remember 2018 for the fantastic start to the season at both sides of the mountain with two significant events:
 - o Acknowledged the tragic death of Hannah Francis and noted that our thoughts are still with her and her family and will be for a very long time.
 - o The second significant event being the Turoa avalanche which took out the High Noon Express.
- Whakapapa had a brilliant year in 2018 but with that came some teething problems with many Turoa customers visiting Whakapapa.
- Turoa did well in a financial sense but lost skier days due to the avalanche. The Chair acknowledged the Turoa team, especially the grooming team, who worked hard to ensure the customers still enjoyed a great skiing experience.
- The Chair noted that \$38m of revenue is the best the company has ever achieved.
- \$7m of EBITDA is a great result and noted not something that regularly happens.
- The investment into the Sky Waka Gondola will help with such results and provide future cashflows for the development of infrastructure
- Significant time has been spent on raising capital from local council, iwi and others for the Sky Waka Gondola.
- The Chair acknowledged and thanked those who helped fund the Gondola:
 - o Tūwharetoa Gondola Partnership;
 - o Māori Investments Ltd;
 - o Bay of Plenty Community Trust;
 - o Mr Mark Dunatjschik;
 - o The Provincial Growth Fund (MBIE);
 - o Ruapehu District Council;
 - o and Taupō District Council.
- The Chair provided a brief update on what is in store for 2019:

- Sky waka Gondola
- Knoll Ridge Café upgrades
- The Chair acknowledged the mammoth efforts of the staff throughout the 2018 season
- Acknowledged customers, shareholders and everyone who supported us in this period.
- The Chair also brought attention to \$55m of investment into the mountain over the last three years.

Geoff Taylor spoke to the financials:

- Acknowledged awkward set of accounts to analyse due to the part period without \$4-\$5m of costs.
- EBITDA is a key measure for RAL.
- Increase in forms of financing. Essentially borrowing more money in different instruments. Noted all the funds for the Sky Waka have been sourced externally.
- Spoke to the question of how much is too much debt. RAL Board has set a measure where debt levels are based on profitability/EBITDA. Based on current results comfortable to a level of up to \$30m.
- Overall the year was a good year financially and currently in a period with increased risk as we go into an aggressive investment cycle.

The Chair took questions on annual report and accounts:

- Craig Ewington:
 - Difficult to perform a financial analysis on 7-month period and agrees results are improving. Acknowledged that debt cap is important
 - Acknowledged things on track, annual report is improving, acknowledged missing graph in the report on visitor days. (*Following the meeting confirmed version online does include Mt Ruapehu winter visitors graph*)

2.0 Appointment of Directors

The Chair handed over to Duncan Fraser.

Duncan Fraser confirmed that the reappointments of Directors were supported by the other Directors and Trustees.

Rob Eller questioned if the secret ballot had occurred. Company Secretary confirmed secret ballot occurred in early April.

2.1 Murray Gribben

Murray spoke to his re-election and it was resolved that Murray Gribben be re-elected a Director of the Company.

James Mackenzie moved that Murray Gribben be reappointed as a director, seconded by Joe Bouchier. Carried.

2.2 Debbie Birch

Debbie spoke to her re-election and it was resolved that Debbie Birch be re-appointed a Director of the Company.

Murray Gribben moved that Debbie Birch be re-appointed as a director, seconded by Kevin Stanley. Carried.

Rob Eller outlined concerns with the process. His view was that the Board had not followed due process as two nominations had been presented to the Company by himself for consideration at the AGM.

Company Secretary spoke to criteria required to be met under section 32.4(e) of the constitution when nominating individuals as Directors:

1. Notice must be issued in writing and left at the registered office of the company a minimum of 3 days prior to the meeting – this notice was received via email
2. Notice must be signed and seconded by a member qualified to attend the meeting and vote – this notice was only signed by one shareholder and the seconder was not present at the meeting
3. The election must be of a person as a director – two individuals were put forward as directors
4. Acceptance of the nominations and willingness of those put forward must be provided – this was received

Chair outlined that The Company had sought legal advice and was comfortable with the process that has been followed.

Rob Eller asked if evidence can be provided regarding the secret ballot that took place. Company Secretary confirmed that this can be provided.

3.0 Reappointment of Auditors

Resolved that Deloitte be re-appointed auditors for the ensuing year and the Directors be authorised to determine their remuneration.

Moved Chris Scott, Seconded Tomas Huppert. Carried.

4.0 Director remuneration

The Chair spoke to the increase in the proposed remuneration level.

Craig Ewington questioned market research. Chair confirmed it was conducted through the Institute of Directors (IOD) and compared RAL to other businesses with similar profiles, earnings and risk. Craig Ewington questioned if the IOD report can be provided. Chair confirmed that it can.

Hamish Bell noted revised remuneration is still under market based on the size and complexity of RAL. Encouraged the Board to think about this when bringing new Directors on board and additional work with subcommittees and other committees. Suggested that could look at supplementary fees for other roles. Congratulated the Board for what have achieved with the fees that are being paid.

Resolved that payment of directors' remuneration at an annual aggregate value not exceeding \$210,000, be approved.

Moved James Mackenzie, Seconded Hamish Bell, carried.

5.0 General Business

Before opening the floor for general business, the Chair noted that the Board and Management team at RAL are committed to rejuvenate the asset base and committed to make \$8m EBTIDA.

Craig Ewington:

- Minutes are complete – but resolution for Trustee travel expenditure not accurate. Need to amend from motion not moved to resolution not carried.
- If someone wants to put a shareholder proposal forward needs to know when date of AGM is, requested that date for 2020 AGM is in next shareholder correspondence. Chair agreed that this will be communicated when date is determined.

Tomas Huppert

- Acknowledged work and commitment from Roger Manthel over many years. Round of applause was given for Roger's contribution to RAL.

Close of AGM

Meeting closed 3.39pm

Following the meeting was a presentation by Ross Copland, Chief Executive.

Signed by the Chair of the meeting as a true record of the meeting.



Chair

29th June 2019

Date

LastName	FistName	Address1	A shares	B shares	C shares	D shares	Total
ABBISSD	DAVID B ABBISS	GNA	3	0	3	0	6
ABERNETHY	MATTHEW ABERNETHY	GNA	2	0	2	0	4
ABERNETHY	J B ABERNETHY	GNA	0	1	0	0	1
ACKROYDA	ARNOLD N ACKROYD	GNA	1	0	1	0	2
ACKROYDJ	JILL ACKROYD	GNA	1	0	1	0	2
ACKROYDJ	JILL M ACKROYD	GNA	1	0	1	0	2
ACKROYDJO	JONATHAN N ACKROYD	GNA	1	0	1	0	2
ACKROYDP	PENELOPE A ACKROYD	GNA	1	0	1	0	2
ACKROYDT	TIMOTHY C ACKROYD	GNA	1	0	1	0	2
ADAMS P	PJ ADAMS & EJ ASTON	GNA	3	0	3	0	6
ADAMSJ	JONATHAN ADAMS	GNA	3	0	0	0	3
AICKENF	FRED C AICKIN	GNA	2	0	2	0	4
AICKENJ	JOAN BUTLER AICKEN	GNA	1	0	1	0	2
AITCHISON	LINDSAY M AITCHISON	GNA	1	0	0	0	1
AITKENAJ	ANDREW JAMES AITKEN	GNA	2	0	2	0	4
AITKENNG	NORMA G AITKEN	GNA	5	0	0	0	5
AKHURSTCK	COLIN K AKHURST	GNA	0	1	0	0	1
AKHURSTEH	EDNA H AKHURST	GNA	0	1	0	0	1
AKHURSTFK	FRED K AKHURST	GNA	0	1	0	0	1
ALDERSONK	KEVIN STANLEY ALDERSON	Gna	0	1	0	0	1
ALDERSONN	NORAH A ALDERSON	Gna	0	1	0	0	1
ALDERSONS	SHARON LESLEE ALDERSON	Gna	0	1	0	0	1
ALDERSONW	THE ESTATE OF WILLIAM S ALDERSON	Gna	0	1	0	0	1
ALDRIDGEM	MARGARET A ALDRIDGE	Gna	0	1	0	0	1
ALDRIDGER	RICHARD J ALDRIDGE	Gna	0	1	0	0	1
ALDWILLM	P ALDWILL	GNA	0	1	0	0	1
ALEXANDER	DEANE P ALEXANDER	GNA	2	0	2	0	4
ALEXANDER	MICHAEL J ALEXANDER	GNA	1	0	0	0	1
ALISONPJ	PAUL J ALISON	GNA	1	0	0	0	1
ALLAMDP	DOREEN P ALLAN	GNA	1	0	0	0	1
ALLANJ	JOHN ALLAN	GNA	2	0	2	0	4
ALLANJA	J A ALLAN	GNA	2	0	2	0	4
ALLENJ	JUDITH ALLEN	GNA	0	1	0	0	1
ALLENN	NORMA ALLEN	gna	1	0	1	0	2
ALLISONAM	ANTHONY M ALLISON	GNA	2	0	2	0	4
ALLISONJC	JOHN C ALLISON	GNA	0	1	0	0	1
ALPEGC	G C ALPE	GNA	1	0	1	0	2
ALPEGF	GURNEY F ALPE	GNA	1	0	1	0	2
AMBLERBS	BRYAN S AMBLER	GNA	0	1	0	0	1
AMBLERJM	JOAN M AMBLER	GNA	0	1	0	0	1
AMBLERNG	NORMAN G AMBLER	GNA	2	0	2	0	4
AMBLERNH	NORMAN H AMBLER	GNA	0	1	0	0	1
AMBLERR	ROBIN AMBLER	GNA	0	1	0	0	1
AMOS	JENNIFER RENDELL	GNA	2	0	0	0	2
ANDERSONA	ALEXANDER B ANDERSON	GNA	4	0	4	0	8
ANDERSOND	DONALD S ANDERSON	GNA	1	0	0	0	1
ANDERSONH	HERBERT F ANDERSON	GNA	5	0	5	0	10
ANDERSONJ	J ANDERSON	GNA	1	0	0	0	1
ANDERSONM	MARGARET J ANDERSON	GNA	5	0	5	0	10
ANLEZARKS	SANDRA L ANLEZARK	GNA	1	0	1	0	2
APPLETONR	ROBERT E APPLETON	GNA	2	0	2	0	4
ARCHERRA	RICHARD A ARCHER	GNA	2	0	2	0	4
ARCHIBALDJJ	JOHNATHON JAMES ARCHIBALD	GNA	2	0	0	0	2
ARCHIBALDOT	OLIVER THOMAS ARCHIBALD	GNA	2	0	0	0	2
ARKWRIGHTRH	R H J ARKWRIGHT	GNA	0	1	0	0	1
ARMISTEAD	BEVERLEY A ARMISTEAD	GNA	3	0	3	0	6
ARMSTRONG	ANN ARMSTRONG	GNA	0	1	0	0	1
ARMSTRONG	JOHN ARMSTRONG	GNA	0	1	0	0	1
ARMSTRONG	MOEA ARMSTRONG	GNA	0	1	0	0	1
ARMSTRONG	ROBIN ARMSTRONG	GNA	0	1	0	0	1
ARMSTRONGB	BETTY ARMSTRONG	Gna	2	0	2	0	4
ARNDT	MURRAY J ARNDT	GNA	1	0	1	0	2
ARNOLDER	ELSDON R ARNOLD	Gna	1	0	0	0	1
ARNOLDJL	THE ESTATE OF JOHN L ARNOLD	GNA	1	0	1	0	2
ARNOLDL	LAWRENCE ARNOLD	GNA	1	0	0	0	1
ARNOLDPD	PAMELA D ARNOLD	GNA	1	0	1	0	2
ASHCROFTJ	JOHN T ASHCROFT	GNA	1	0	0	0	1
ASTLEYG	GERALD ASTLEY	GNA	1	0	1	0	2
AUDLEYCS	CYRIL S AUDLEY	gna	5	0	5	0	10
BACCHUSDR	DAVID R BACCHUS	GNA	0	1	0	0	1
BAILEYBC	BARRY C BAILEY	GNA	1	0	0	0	1
BAILLIEAJ	ESTATE OF ALEX J BAILLIE	GNA	0	1	0	0	1
BAILLIEEM	ELVA M BAILLIE	GNA	1	0	0	0	1
BAINBN	BARRIE N BAIN	GNA	2	0	0	0	2

BAIRDJKP	JOHN K P BAIRD	GNA	0	1	0	0	1
BAJKOMF	MICHAEL F BAJKO	GNA	1	0	0	0	1
BAKERKJ	KEVIN J BAKER	GNA	1	0	0	0	1
BALEDA	DEREK A BALE	GNA	0	1	0	0	1
BALFOURCG	CYNTHIA G BALFOUR	GNA	1	0	1	0	2
BALFOURJ	JAMES D BALFOUR	GNA	1	0	1	0	2
BAMFORDK	KENNETH BAMFORD	GNA	0	1	0	0	1
BAMFORDV	VICTORIA BAMFORD	GNA	0	1	0	0	1
BANKSD	DONALD BANKS	GNA	0	1	0	0	1
BARAGWANA	WILLIAM D BARAGWANATH	GNA	1	0	1	0	2
BARBERRM	ROBYN M BARBER	GNA	2	0	0	0	2
BARKEREM	EVA M BARKER	GNA	2	0	0	0	2
BARKERJH	JOHN H BARKER	GNA	0	1	0	0	1
BARNETTCR	CLIFFORD R BARNETT	GNA	4	0	4	0	8
BARRETTMH	MARY H BARRETT	GNA	1	0	1	0	2
BARRETTRS	REX S BARRETT	GNA	1	0	0	0	1
BARRNA	NEIL ALEXANDER FRANCIS BARR	GNA	1	0	1	0	2
BARROMTD	TOM D BARRON	GNA	1	0	1	0	2
BARTHELG	GUNTER BARTHEL	GNA	1	0	1	0	2
BARTONKM	KELVIN M BARTON	GNA	0	1	0	0	1
BARTONWP	WILLIAM P BARTON	GNA	1	0	1	0	2
BATCHELOR	GERALD L BATCHELOR	GNA	0	1	0	0	1
BATESPM	PATRICIA M BATES	GNA	2	0	2	0	4
BATESTW	THOMAS W BATES	GNA	1	0	1	0	2
BATLEYMH	MICHAEL H BATLEY	GNA	0	0	1	0	1
BAXTERJM	JEAN M BAXTER	GNA	1	0	1	0	2
BAYENSP	PHILIP BAYENS	GNA	0	0	1	0	1
BAYFIELDN	THE ESTATE OF NANCY BAYFIELD	GNA	1	0	0	0	1
BAYLEYJG	JOHN G BAYLEY	GNA	0	1	0	0	1
BAYLYEH	ELIZABETH H BAYLY	GNA	2	0	2	0	4
BEATYM	MARIE BEATY	GNA	0	1	0	0	1
BEAZLEYAW	ALBERT W BEAZLEY	GNA	0	1	0	0	1
BECKETTMM	MAURICE M BECKETT	GNA	0	1	0	0	1
BEEREAMC	ERNEST A & MINNIEC BEER	GNA	0	1	0	0	1
BEERWC	WYN C BEER	GNA	0	1	0	0	1
BEETHAMCR	CHARLES RICHARD HARVIE BEETHAM-ROUTE	GNA	5	0	5	0	10
BEETHAMJH	JOHN H BEETHAM	GNA	5	0	0	0	5
BEETHAMPC	PETER C BEETHAM	GNA	5	0	5	0	10
BELLAART	JACQUELINE C BELLAART	GNA	1	0	1	0	2
BELLAARTJ	JOHN BELLAART	GNA	1	0	1	0	2
BELLAARTL	LILI Y BELLAART	GNA	1	0	1	0	2
BELLAARTM	MARY E BELLAART	GNA	1	0	1	0	2
BELLBW	THE ESTATE OF B W BELL	GNA	1	0	1	0	2
BELLCW	CLYNE W BELL	Gna	1	0	0	0	1
BELLERBYL	LYNETTE S BELLERBY	Gna	0	1	0	0	1
BELLFM	MRS F M D BELL	GNA	2	0	3	0	5
BELLHM	HENRY M BELL	GNA	1	0	1	0	2
BELLJR	JOHN R BELL	Gna	1	0	0	0	1
BELLPM	PATRICIA M BELL	GNA	2	0	2	0	4
BELLVJ	VALERIE J BELL	Gna	1	0	0	0	1
BENJAMINR	ROBERT M BENJAMIN	Gna	20	0	0	0	20
BENNETED	ELLEN D BENNETT	Gna	5	0	5	0	10
BENNETTB	BRETT HUGH BENNETT	Gna	0	1	0	0	1
BENNETTKS	KEITH S BENNETT	Gna	1	0	0	0	1
BENNETTMA	MICHAEL A BENNETT	Gna	0	0	1	0	1
BENSONC	COLIN BENSON	Gna	0	1	0	0	1
BENSONDS	DIANA S BENSON	Gna	1	0	1	0	2
BENVENIST	L BENVENISTE	Gna	0	1	0	0	1
BERRYJ	JOHN BERRY	Gna	0	1	0	0	1
BEUTHRA	ROLAND A BEUTH	Gna	0	1	0	0	1
BIDWILLJS	JAMES S BIDWILL	Gna	5	0	0	0	5
BIERRENW	NOEL W BIERRE	Gna	1	0	1	0	2
BIGWOODWA	WATSON A BIGWOOD	Gna	0	1	0	0	1
BIRCHGE	GAVIN E BIRCH	Gna	1	0	0	0	1
BIRDART	ARTHUR E BIRD	Gna	1	0	1	0	2
BIRRELLK	KENNETH S BIRRELL	Gna	2	0	4	0	6
BISHOPM	THE ESTATE OF MARGUERITE BISHOP	GNA	1	0	1	0	2
BISSETL	LINDEN BISSET	Gna	0	1	0	0	1
BLACKSJH	SPENCER J H BLACK	Gna	0	1	0	0	1
BLACKWOOD	C BLACKHAWK	Gna	0	1	0	0	1
BLAIRHJ	HAMISH J BLAIR	Gna	1	0	1	0	2
BLANKENCG	CORNELUS G BLANKEN	Gna	0	1	0	0	1
BLANKLEYN	NEVILLE BLANKLEY	Gna	1	0	0	0	1
BLUNDELLT	TIMOTHY P BLUNDELL	Gna	0	0	2	0	2
BLYTHJA	THE ESTATE OF JOHN A BLYTH	GNA	1	0	1	0	2

BLYTHJF	JUNE F BLYTH	Gna	0	0	1	0	1
BLYTHSS	SUSAN S W BLYTH	Gna	1	0	1	0	2
BOCKETTJM	J M BOCKETT	Gna	2	0	2	0	4
BODYPM	P M BODY	Gna	0	2	0	0	2
BODYRJ	RAY J BODY	Gna	0	1	0	0	1
BONDBR	BARNETT ROY BOND	Gna	0	1	0	0	1
BONDI	IAN N BOND	Gna	0	0	1	0	1
BONDSMBJ	STEPHEN M AND BONNIE J BON	Gna	0	1	0	0	1
BOOTHM	MARGOT BOOTH	GNA	2	0	2	0	4
BORRIEJM	JAMES M BORRIE	Gna	1	0	0	0	1
BORRINIA	THE ESTATE OF IAN A BORRIN	GNA	0	1	0	0	1
BORTHWICK	THOMAS M BORTHWICK	Gna	8	0	8	0	16
BOSTOCKE	ELIZABETH BOSTOCK	Gna	0	1	0	0	1
BOSTOCKH	HARRIET BOSTOCK	GNA	0	1	0	0	1
BOSTOCKMI	MICHAEL I BOSTOCK	Gna	0	1	0	0	1
BOTTINGDA	DOROTHY A BOTTING	Gna	1	0	1	0	2
BOURKERF	ROGER FRANCIS BOURKE	Gna	1	0	0	0	1
BOUZAIDL	LEON A BOUZAID	GNA	0	0	1	0	1
BOYDDW	D W BOYD	Gna	0	1	0	0	1
BOYDMK	MURRY K BOYD	Gna	1	0	0	0	1
BOYLEMJ	MICHAEL J BOYLE	Gna	0	1	0	0	1
BRADFORDA	ALLAN C BRADFORD	Gna	5	0	5	0	10
BRADLEYAM	A M BRADLEY	Gna	1	0	0	0	1
BRADLEYED	ELLEN D BRADLEY	Gna	1	0	0	0	1
BRADLEYHL	HUGH L BRADLEY	Gna	2	0	2	0	4
BRADSHAWG	GERALD B BRADSHAW	Gna	4	1	0	0	5
BRADSHAWJ	JOHN D BRADSHAW	GNA	2	0	2	0	4
BRADSHAWP	PAUL BRADSHAW	Gna	0	1	0	0	1
BRAKEB	BRIAN BRAKE	Gna	1	0	0	0	1
BRAMMERAE	ALLAN E BRAMMER	Gna	0	1	0	0	1
BREINGANJ	JUNE BREINGAN	Gna	2	0	0	0	2
BREMNERAR	ALEXANDER R BREMNER	Gna	4	0	4	0	8
BREMNERRJ	ROSEMARY J BREMNER	Gna	2	0	1	0	3
BRETTJM	JONATHON M BRETT	Gna	0	2	0	0	2
BRETTM	MICHAEL BRETT	Gna	0	1	0	0	1
BRIDGMAND	D S BRIDGMAN	Gna	0	0	1	0	1
BRIGHTWEL	KEVIN E BRIGHTWELL	Gna	0	1	0	0	1
BRINKMANA	ALFRED H L BRINKMAN	Gna	1	0	1	0	2
BRISCOED	DAVID C BRISCOE	Gna	1	0	0	0	1
BROOKERLC	RICHARD L C BROOKE	Gna	0	1	0	0	1
BROWINGLJ	LINDSY J BROWNING	Gna	2	0	0	0	2
BROWNAJ	ANTHONY J BROWN	Gna	0	1	0	0	1
BROWNCE	CYNTHIA E BROWN	GNA	1	0	1	0	2
BROWNDB	DION N BROWN	Gna	0	0	1	0	1
BROWNDSC	DONALD S C BROWN	Gna	2	0	0	0	2
BROWNEW	W I R BROWNE	Gna	1	0	0	0	1
BROWNJDSC	JOHN D S C BROWN	Gna	1	0	1	0	2
BROWNJJ	JESSICA J BROWN	Gna	0	1	0	0	1
BROWNJP	JUNE P BROWN	GNA	2	0	2	0	4
BROWNMJ	GEOFFREY M J BROWN	GNA	1	0	1	0	2
BROWNMST	MARY ST CLAIR BROWN	GNA	1	0	0	0	1
BROWNPAUL	PAUL K BROWN	GNA	1	0	1	0	2
BROWNSONS	SELWYN BROWNSON	Gna	2	0	0	0	2
BRUCENR	NEIL R BRUCE	Gna	1	0	0	0	1
BRYANRE	ROBERT E BRYAN	GNA	5	0	5	0	10
BRYANTJ	JOCLYN A BRYANT	GNA	1	0	0	0	1
BRYANTMW	MARGARET W BRYANT	GNA	1	0	0	0	1
BUCHANACJ	A C AND J J BUCHEN	Gna	2	0	0	0	2
BUCKLERP	PATRICK BUCKLER	Gna	1	0	0	0	1
BUCKNELLE	ERNEST S BUCKNELL	Gna	1	0	0	0	1
BUISTIN	IAN N BUIST	Gna	0	1	0	0	1
BUKOW	JOHN BUKOWSKI	GNA	1	0	0	0	1
BULLDC	THE ESTATE OF DAVID C BULL	Gna	2	0	0	0	2
BULLMB	MARGARET B BULL	GNA	1	0	0	0	1
BUNNYHO	HENRY O BUNNY	Gna	1	0	0	0	1
BURLEYJA	JOCELYN A BURLEY	Gna	1	0	0	0	1
BURRELLJP	JULIET P BURRELL	Gna	1	0	1	0	2
BURRIDGEJ	JOHN H BURRIDGE	Gna	1	0	0	0	1
BURTONNGL	NIGEL G L BURTON	GNA	0	0	1	0	1
BURTONRD	RICHARD D BURTON	GNA	2	0	2	0	4
BURTSCHERM	MICHAEL RAYMOND BURTSCHER	Gna	3	0	0	0	3
BUSCHBM	BARBARA M BUSCH	Gna	1	0	1	0	2
BUTTIMOREGN	GARY N BUTTIMORE	Gna	0	1	0	0	1
BUTTSCR	CHARLOTTE AND REBECCA BUTTS	Gna	2	0	0	0	2
BUTTSDCS	DEBORAH C AND SARAH BUTTS	Gna	2	0	0	0	2

RAL Missing Shareholders - 18th July 2019

BUTTSEV	EVE V BUTTS	Gna	1	0	0	0	1
BYTTINERL	LILLY I BYTTINER	Gna	4	0	0	0	4
CABENAD	D CABENA	Gna	0	1	0	0	1
CACALATE	TANYA E CACALA	Gna	0	1	0	0	1
CACALAV	VLAD CACALA	Gna	0	0	1	0	1
CACALAVM	VICKI M CACALA	Gna	0	1	0	0	1
CAESARMB	MICHAEL B CAESAR	Gna	1	0	1	0	2
CAHILLR	ROSALENE F CAHILL	Gna	0	0	1	0	1
CALDERDJ	DESMOND J CALDER	Gna	0	1	0	0	1
CALDERRC	ROBERT C CALDER	Gna	3	0	0	0	3
CALDWELLC	CHARLES D CALDWELL	Gna	1	1	1	0	3
CALLAGHAN	BRYAN D CALLAGHAN	Gna	0	1	0	0	1
CALLAGHAN	NEIL J CALLAGHAN	Gna	0	1	0	0	1
CAMERONAD	ALAN D CAMERON	GNA	5	0	5	0	10
CAMERONMP	MICHAEL P CAMERON	Gna	0	1	0	0	1
CAMERONS	S CAMERON	Gna	0	1	0	0	1
CAMPBELLA	ALLAN F CAMPBELL	Gna	0	1	0	0	1
CAMPBELLN	NORMAN A CAMPBELL	Gna	10	0	10	0	20
CAPLENHE	ESTATE OF HARRY E CAPLEN	Gna	3	3	1	0	7
CAREYJA	JOHN A LORIE CAREY	Gna	5	0	0	0	5
CARORE	ROBIN E CARO	Gna	0	1	0	0	1
CARRICKRO	PAUL J CARRICK-ROBERTSON	Gna	0	0	1	0	1
CARROLLJ	JAMES CARROLL	GNA	1	0	1	0	2
CARRUTHER	CATHERINE M CARRUTHERS	Gna	1	0	1	0	2
CARSENSS	SHONA CARSENS	Gna	1	0	0	0	1
CARSONMP	MARIE P CARSON	Gna	5	0	0	0	5
CARTERAD	ARTHUR D CARTER	Gna	1	0	0	0	1
CARTERJB	JEAN B CARTER	Gna	1	0	0	0	1
CARTERJM	JOHN M CARTER	Gna	0	1	0	0	1
CARTERRJ	ROSALIND J CARTER	Gna	0	1	0	0	1
CARTWRIGH	H E CARTWRIGHT	Gna	1	0	1	0	2
CASEYBA	BEVERLY A CASEY	Gna	0	0	1	0	1
CASEYMT	THE ESTATE OF MICHAEL T CASEY	GNA	1	0	0	0	1
CASEYTL	TANYA LEIGH CASEY	Gna	0	0	1	0	1
CASTLEEC	ELIZABETH C CASTLE	Gna	2	0	2	0	4
CAVELLGF	GILLIAN FERN CAVELL	GNA	2	0	2	0	4
CEJNARPJ	PETER J CEJNAR	Gna	0	2	0	0	2
CHALMERSA	AIMEE CHALMERS	Gna	1	0	1	0	2
CHAMBERLA	BRYAN J CHAMBERLAIN	Gna	0	1	0	0	1
CHAMBERLA	REX N CHAMBERLAIN	Gna	0	1	0	0	1
CHAMBERSM	MASON R CHAMBERS	GNA	1	0	0	0	1
CHAPMANNF	NOEL F CHAPMAN	Gna	1	0	0	0	1
CHARLTONJ	JUDITH CHARLTON	Gna	0	1	0	0	1
CHISHOLMF	F C R CHISHOLM	Gna	0	1	0	0	1
CHONGJH	JASON HOWARD CHONG	Gna	0	0	1	0	1
CHONGSA	SANDRA A MCKINNEY	Gna	0	0	1	0	1
CHONGTH	TREVOR H CHONG	Gna	0	0	1	0	1
CHRISTENS	RAYMOND E CHRISTENSEN	Gna	1	0	1	0	2
CHRISTMAS	TIMOTHY I CHRISTMAS	GNA	1	0	1	0	2
CHRISTOPH	NEIL E CHRISTOPHERSON	Gna	1	0	1	0	2
CHURCHILL	GLADYS J CHURCHILL	Gna	1	0	0	0	1
CHURTONME	THE ESTATE OF MARJORIE E CHURTON	Gna	1	0	1	0	2
CL	MAREE CLARK	Gna	5	0	5	0	10
CLARKCJ	COLIN J CLARK	Gna	0	1	0	0	1
CLARKEDP	DAWN P CLARKE	Gna	1	0	0	0	1
CLARKEHM	HELEN M CLARKE	Gna	1	0	0	0	1
CLARKEJA	JOHN A CLARKE	Gna	1	0	0	0	1
CLARKERF	RONALD F J CLARKE	Gna	1	0	0	0	1
CLATWORTH	MARK G CLATWORTHY	Gna	0	0	1	0	1
CLAUSENGC	GRAHAM CAMPBELL CLAUSEN	Gna	1	0	1	0	2
CLAYWN	DR WILLIAM N CLAY	Gna	1	0	1	0	2
CLEARKINO	OWEN AND HUGH CLEARKIN	Gna	0	2	0	0	2
CLEGGBP	BRENDAN PATRICK CLEGG	Gna	1	1	1	0	3
CLELANDJP	JANICE P CLELAND	Gna	1	0	1	0	2
CLIMIEJ	JANET CLIMIE	Gna	0	1	0	0	1
CLINTONBA	MICHAEL CLINTON-BAKER	Gna	0	1	0	0	1
CLOSEAA	AILEEN A CLOSE	Gna	0	2	0	0	2
COATESFW	FREDERICK WILLIAM COATES	Gna	1	0	0	0	1
COATESJA	JULIET ANNA COATES	Gna	4	0	0	0	4
COBERGERE	EKKEHARD COBERGER	Gna	1	0	1	0	2
COCHRAN	ISABEL COCHRAN	Gna	1	0	0	0	1
COCHRANIC	ISOBEL C COCHRAN	Gna	1	0	1	0	2
COCHRANPA	PETER A COCHRAN	Gna	1	0	1	0	2
COEHM	HEATHER M COE	Gna	1	0	0	0	1
COEKV	KEITH V COE	Gna	1	0	0	0	1

COHENRT	RICHARD T COHEN	Gna	0	1	0	0	1
COKERLG	LEONARD GARY COKER-PUKAHU	Gna	2	0	2	0	4
COLEMANDA	DREW ASHER COLEMAN	GNA	3	2	2	0	7
COLEMANTW	TREVOR W COLEMAN	Gna	0	1	0	0	1
COESL	SIMON LEWIS COLE	Gna	0	0	1	0	1
COLLIERKR	KEITH R COLLIER	GNA	2	0	2	0	4
COLLIERMH	MARY H COLLIER	GNA	1	0	1	0	2
COLLINGSB	BARRIE W COLLINGS	Gna	0	1	0	0	1
COLLINSMW	MICHAEL W S COLLINS	Gna	0	1	0	0	1
COMMANDO	COMMANDO SPORTS TROUSERS LTD S B CHAMBERS S AGREE	Gna	5	0	5	0	10
CONROYME	MICHAEL E CONROY	GNA	1	0	1	0	2
CONSTANCE	ESTATE OF JAMES A C CONSTANCE	GNA	1	0	1	0	2
COOKEA	ELIZABETH A COOK	Gna	6	0	6	0	12
COOKES	STUART COOKE	Gna	0	1	0	0	1
COOKFJ	F J & S A COOK	Gna	1	0	4	0	5
COOKP	PRUDENCE COOK	Gna	0	1	0	0	1
COOMBESJA	J A COOMBES	gna	2	0	2	0	4
COOPERD	DAVID COOPER	GNA	0	1	0	0	1
COOPERDW	DAVID W COOPER	GNA	1	1	1	0	3
COOPERJB	JOHN B COOPER	Gna	1	0	0	0	1
COOPERMG	MICHAEL G COOPER	Gna	1	0	0	0	1
COOPERMH	DR M H COOPER	Gna	0	1	0	0	1
COPRYWRIG	KENNETH W CORY-WRIGHT	GNA	1	0	1	0	2
CORBETTJ	MR JOLYON COLIN CORBETT	Gna	0	0	17	0	17
CORINPE	PETER E CORIN	Gna	1	0	0	0	1
CORNISHAM	ADELE M CORNISH	Gna	1	0	1	0	2
CORNISHC	CHARLES B CORNISH	Gna	4	0	5	0	9
CORYWRIGH	LOIS J CORY-WRIGHT	GNA	1	0	1	0	2
COSFORDC	CAMERON COSFORD	Gna	1	0	0	0	1
COTTERBM	BRYAN M COTTER	Gna	5	0	5	0	10
COTTERELL	D COTTERELL	Gna	0	1	0	0	1
COTTERELL	GARY L COTTERELL	GNA	1	0	0	0	1
COULAMRGB	RALPH G B COULAM	GNA	2	0	0	0	2
COULTERJG	JOHN G COULTER	Gna	1	0	0	0	1
COULTERMS	MARY S COULTER	Gna	1	0	0	0	1
COVELLERF	RUTH F COVELLE	GNA	1	0	0	0	1
COWRIEOD	OLIVER D COWRIE	Gna	9	5	0	0	14
COXBG	BARBARA G COX	Gna	1	0	0	0	1
COXHA	H A COX	Gna	0	1	0	0	1
COXJJ	JEREMY J H COX	Gna	1	0	1	0	2
COXR	ROSEMARY DE B COX	Gna	1	0	0	0	1
COXSJ	STEPHEN J H COX	Gna	1	0	1	0	2
CRACKNELL	THE ESTATE OF DAVID CRACKNELL	GNA	1	0	1	0	2
CRACKNELL	THE ESTATE OF DOROTHEA B CRACKNELL	GNA	1	0	1	0	2
CRAWFORDS	SALLY L CRAWFORD	Gna	0	1	0	0	1
CRAWFORDS	SARAH L CRAWFORD	Gna	0	1	0	0	1
CRAWFORDT	TREVOR H CRAWFORD	Gna	1	0	0	0	1
CROCKETTR	ROBERT M CROCKETT	Gna	1	0	1	0	2
CRONINJB	JOSEPH B CRONIN	GNA	1	0	0	0	1
CROOKESRC	ROSEMARY C CROOKES	Gna	0	1	0	0	1
CROOKSJI	JAMES I CROOKS	GNA	1	0	0	0	1
CROSSLEYK	KEVIN D CROSSLEY	Gna	0	1	0	0	1
CROSSRL	ROBERT L CROSS	GNA	2	0	2	0	4
CROTTYCHA	CHARLES CROTTY	GNA	1	0	1	0	2
CRUMBH	MRS B H CRUM	Gna	0	1	0	0	1
CRUMR	ROGER CRUM	Gna	1	0	1	0	2
CRYDERMAN	ERIC CRYDERMAN	Gna	0	1	0	0	1
CRYERAH	AUSTIN HUGH CRYER	Gna	0	1	0	0	1
CRYEREN	EMILY NICOLA CRYER	Gna	5	0	0	0	5
CRYERG	GRACE FRANCES CRYER	Gna	5	0	0	0	5
CUMMANEKM	KENNETH M CUMMANE	Gna	0	1	0	0	1
CUMMINGSD	SUSAN D CUMMING	Gna	0	1	0	0	1
CUMMINGSS	SPENCER CUMMINGS	Gna	0	1	0	0	1
CUNNINGHA	ANDREW J CUNNINGHAM	Gna	0	0	1	0	1
CUNNINGHA	JENNIFER L CUNNINGHAM	Gna	1	0	0	0	1
CUNNINGHAR	STEPHEN R CUNNINGHAM	Gna	1	0	1	0	2
CURLED	DAVID CURLE	Gna	0	0	1	0	1
CURLEMA	MARIA A CURLE	Gna	0	1	0	0	1
CURRANJH	JOHN H CURRAN	Gna	2	0	0	0	2
CURTISDC	DOROTHEA C CURTIS	GNA	1	0	5	0	6
CYRERN	NINA ESTHER FLORENCE CRYER	Gna	5	0	0	0	5
DAMESCA	CORNELIS A DAMES	GNA	1	0	1	0	2
DAVIDSON	GERARD A DAVIDSON	Gna	1	0	0	0	1
DAVIDSONA	ASHLEY C DAVIDSON	Gna	1	0	0	0	1
DAVIDSONC	CHRISTOPHER T DAVIDSON	GNA	1	0	1	0	2

DAVIDSONL	LEONE H DAVIDSON	Gna	1	0	0	0	1
DAVIESEB	EVAN B DAVIES	Gna	1	0	0	0	1
DAVIESGA	G A DAVIES	Gna	1	0	0	0	1
DAVISBS	BRUCE S DAVIS	Gna	1	0	1	0	2
DAVISC	CYNTHIA DAVIS	Gna	0	1	0	0	1
DAVISJA	JUDITH A DAVIS	Gna	0	1	0	0	1
DAVISNH	NOEL H DAVIS	Gna	1	0	1	0	2
DAVISR	ROBERT T DAVIS	GNA	2	2	2	0	6
DAVISR	RONALD DAVIS	Gna	1	0	1	0	2
DAVISR	REX DAVIS	Gna	0	1	0	0	1
DAWESE	ELIZABETH S DAWES	GNA	1	0	0	0	1
DAWSONDWJ	DAVID W J DAWSON	Gna	0	1	0	0	1
DAWSONEC	ELSIE C DAWSON	Gna	0	1	0	0	1
DAWSONEV	ERIC V DAWSON	Gna	1	0	0	0	1
DAWSONGP	GERALDINE P DAWSON	Gna	1	0	0	0	1
DAWSONJI	J I DAWSON	Gna	0	1	0	0	1
DAWSONPC	PENELOPE C DAWSON	Gna	0	1	0	0	1
DAWSONRE	ROBIN E DAWSON	Gna	0	1	0	0	1
DAWSONWHD	WILLIAM H D DAWSON	Gna	1	0	0	0	1
DAYJB	JOHN B DAY	Gna	0	1	0	0	1
DEANSMR	MICHAEL R DEANS	Gna	5	0	5	0	10
DEBOERAJ	ALYSON J DE BOER	Gna	1	0	0	0	1
DELACYSA	SUSAN A DE LACY	Gna	0	1	0	0	1
DESTIGTER	TREVOR N DE STIGTER	Gna	0	1	0	0	1
DEUTSCHW	WALTER DEUTSCH	Gna	3	0	0	0	3
DICKENSA	ANDREW DICKENS	GNA	0	0	1	0	1
DICKENSC	CATHERINE DICKENS	GNA	0	0	1	0	1
DICKENSP	PETER DICKENS	GNA	0	0	1	0	1
DICKENSR	RICHARD DICKENS	GNA	0	0	1	0	1
DICKEYCS	CLIFFORD S DICKEY	Gna	0	2	0	0	2
DICKEYJ	JEANETTE DICKEY	Gna	0	1	0	0	1
DICKEYR	RUTH DICKEY	Gna	0	1	0	0	1
DICKIESC	SIMON C DICKIE	GNA	0	1	1	0	2
DICKINSON	MARGARET A DICKINSON	GNA	1	0	0	0	1
DICKSONL	LLOYD M DICKSON	Gna	1	0	1	0	2
DICKSONLR	LORRAINE R DICKSON	GNA	0	1	0	0	1
DILLONGJ	GREGORY J DILLON	GNA	1	0	1	0	2
DILLONHG	HARVEY G DILLON	Gna	1	0	1	0	2
DOBSONA	AUDREY DOBSON	Gna	0	1	0	0	1
DOBSONTJ	TESSA JULIET DOBSON	GNA	1	0	2	0	3
DOHERTYTR	TREVOR R DOHERTY	Gna	1	0	1	0	2
DONALDHJ	HEATHER J DONALD	Gna	1	0	0	0	1
DONALDSE	S E DONALD	GNA	1	0	1	0	2
DONNELLY	GILLIAN A DONNELLY	Gna	0	1	0	0	1
DORFLINGE	WALTER B DORFLINGER	GNA	2	0	0	0	2
DOUGLASDJ	DIANA J & ROY DOUGLAS	Gna	2	0	2	0	4
DOUGLASJE	JUDITH ELLEN DOUGLAS	Gna	5	0	5	0	10
DOWDLEEM	ELIZABETH M DOWDLE	Gna	1	0	0	0	1
DOWDLESJ	SARAH J DOWDLE	Gna	0	1	0	0	1
DOWNEYNE	NGAIRE E DOWNEY	GNA	1	0	1	0	2
DOWNEYPG	THE ESTATE OF P G DOWNEY	GNA	1	0	1	0	2
DRAFFINR	RODNEY F DRAFFIN	Gna	4	0	4	0	8
DRAPERL	LYNETTE DRAPER	Gna	0	1	0	0	1
DREWRV	RAYMOND V DREW	Gna	1	0	0	0	1
DROWERDM	DOROTHY M DROWER	Gna	1	0	0	0	1
DROWERDN	DONALD N DROWER	Gna	3	0	0	0	3
DRUCKERPP	PHILIP P DRUCKER	Gna	1	0	0	0	1
DRUMMONDP	PETER D DRUMMOND	Gna	0	1	0	0	1
DRUMMONDS	SALLY H DRUMMOND	Gna	0	1	0	0	1
DUCKERC	CLIVE DUCKER	Gna	1	0	0	0	1
DUNCALFP	PHILIP D DUNCALF	Gna	3	0	0	0	3
DUNCAN	IAN R DUNCAN	Gna	6	0	8	0	14
DUNCANAB	ARTHUR B DUNCAN	GNA	4	0	4	0	8
DUNCANAJ	AUDREY J DUNCAN	Gna	2	0	0	0	2
DUNCANHJ	HELEN J DUNCAN	Gna	1	0	0	0	1
DUNCANIA	IAN A DUNCAN	Gna	1	0	0	0	1
DUNN NEE FORD	RACHEL MARGARET DUNN	Gna	0	0	1	0	1
DWARSGARR	THE ESTATE OF GARRIT DWARS	Gna	0	1	0	0	1
DYKESML	THE ESTATE OF MAURICE L DYKES	GNA	1	0	1	0	2
EADepJ	PETER JOHN EADE	Gna	1	0	0	0	1
EADYPM	PETER M EADY	GNA	2	0	2	0	4
EATONJRD	JOHN R D EATON	Gna	0	1	0	0	1
EDGECEUMBE	GEORGE S J EDGECEUMBE	Gna	0	2	0	0	2
EDGLEJEJ	EVELYN J EDGLEY	Gna	3	0	3	0	6
EDMONDSM	MICHAEL EDMOND	GNA	0	1	0	0	1

EDWARDSS	SELWYN EDWARDS	Gna	0	1	0	0	1
EDWARDSTJ	THELMA J EDWARDS	Gna	0	1	0	0	1
EGGERSRW	ROBERT WILLIAM EGGERS	GNA	1	0	1	0	2
EISLERT	TOOMAS EISLER	Gna	0	1	0	0	1
ELKINFM	FRANCES M ELKIN	Gna	0	1	0	0	1
ELLIOTTE	ELFIE C T ELLIOTT	Gna	2	0	2	0	4
ELLIOTTI	IAN ELLIOTT	Gna	0	1	0	0	1
ELLISKR	KIMMITT R ELLIS	Gna	1	0	0	0	1
ELSOMDM	D M ELSOM	Gna	1	0	1	0	2
EMSLIEC	C EMSLIE	Gna	1	0	0	0	1
ERDOSJA	JOHN A ERDOS	Gna	0	1	0	0	1
ERLANDSEN	JANLEE ERLANDSEN	Gna	1	0	0	0	1
EVANS G	GLYN EVANS	Gna	1	0	0	0	1
EVANS LG	LIONEL G EVANS	Gna	1	0	1	0	2
EVERARDRP	ROSS PATRICK EVERAR	GNA	1	0	1	0	2
EVERETTJE	JOHN E EVERETT	Gna	0	1	0	0	1
EWENAD	ALEX D EWEN	Gna	0	1	0	0	1
EWENAP	THE ESTATE OF ANNA P EWEN	GNA	1	0	1	0	2
EWEND	DAVID EWEN	Gna	0	1	0	0	1
EWENDJ	ESTATE OF DAVID J EWEN	GNA	1	0	1	0	2
EWENJ	JOHN EWEN	Gna	0	1	0	0	1
EWENJM	JOHN M EWEN	GNA	1	0	1	0	2
FAIRHEADA	ALLAN D FAIRHEAD	Gna	1	0	1	0	2
FAIRLEYAW	THE ESTATE OF ARTHUR W FAIRLEY	GNA	0	1	0	0	1
FALLSDC	DIANA C FALLS	GNA	0	1	0	0	1
FALLSJR	JOHN R FALLS	Gna	0	1	0	0	1
FALLSNJ	NGAIRE J FALLS	Gna	0	1	0	0	1
FANNINGM	MATTHEW BRENDON FANNING	Gna	1	0	1	0	2
FARISIB	IRWIN BRUCE FARIS	Gna	1	1	0	0	2
FARISM	MICHAEL FARIS	Gna	0	1	0	0	1
FARISP	PRUDENCE FARIS	Gna	0	1	0	0	1
FARKASEE	EDITH E FARKAS	GNA	1	0	1	0	2
FAWCETJ	JULIE FAWCET	Gna	0	1	0	0	1
FAWCETK	KIT FAWCET	Gna	0	1	0	0	1
FAWCETT C	CHRISTOPHER L FAWCETT	Gna	0	2	0	0	2
FERGUSONL	LAETITIA J FERGUSON	Gna	0	1	0	0	1
FERGUSONW	WILLIAM G L FERGUSON	Gna	0	1	0	0	1
FERNBE	BRENDA E FERN	Gna	0	1	0	0	1
FIELD AJ	ANTHONY J FIELD	Gna	0	0	10	0	10
FIELD LW	LEONARD W FIELD	GNA	1	0	0	0	1
FIELD PA	PENELOPE A FIELD	Gna	0	0	10	0	10
FILLERYWS	WILLIAM S FILLERY	GNA	0	0	1	0	1
FINNEGANJ	JANE FRANCIS FINNEGAN	GNA	2	0	2	0	4
FINNHJ	H J FINN	Gna	1	0	0	0	1
FIRTHGR	GRETA R FIRTH	Gna	0	0	1	0	1
FIRTHMJ	MICHAEL J FIRTH	GNA	2	0	2	0	4
FISHERBJ	BASIL J FISHER	Gna	2	0	2	0	4
FISHERJE	J E FISHER	Gna	0	1	0	0	1
FISHERJH	J H FISHER	Gna	0	1	0	0	1
FISHERJM	JAMES M FISHER	Gna	1	0	1	0	2
FISHERJS	J S FISHER	Gna	0	1	0	0	1
FISHERKM	KRISTINA M FISHER	Gna	0	1	0	0	1
FISHERME	MARY E FISHER	Gna	0	1	0	0	1
FISHERRW	RICHARD W FISHER	Gna	0	1	0	0	1
FITCHETTH	HELEN P FITCHETT ESTATE	Gna	0	2	1	0	3
FITCHETTM	MARCUS R FITCHETT ESTATE	GNA	1	0	1	0	2
FITCHETTM	MICHAEL RATTRAY FITCHETT	Gna	0	1	0	0	1
FITZGERAL	ROWENA R FITZGERALD	Gna	3	0	0	0	3
FITZGERAL	KENNETH W FITZGERALD	Gna	0	1	0	0	1
FLEMINGIC	IAN C FLEMING	Gna	0	1	0	0	1
FLYNNR	ROBERT FLYNN	GNA	0	1	0	0	1
FOOTHEADE	EDWARD I FOOTHEAD	Gna	2	0	0	0	2
FORDHAMP	PETER FORDHAM	Gna	1	0	0	0	1
FOREMANMP	MARY P FOREMAN	Gna	1	0	0	0	1
FORGIEPJ	PETER J FORGIE	Gna	1	0	0	0	1
FORTESCUE	MARGARET B L FORTESCUE	Gna	2	0	0	0	2
FORTESCUE	STEPHEN J G FORTESCUE	Gna	1	0	1	0	2
FORTESCUE	ANDREW G FORTESCUE	GNA	1	0	0	0	1
FORTESCUE	HELEN NOELINE FORTESCUE	GNA	1	0	0	0	1
FORTESCUE	JOYCE NOELINE FORTESCUE	gna	1	0	0	0	1
FORTESCUE	SUSAN J FORTESCUE	GNA	1	0	0	0	1
FOSTERSA	SYDNEY A FOSTER	Gna	0	1	0	0	1
FOUCHEREA	EARL A FOUCHER	Gna	0	1	0	0	1
FOWLEREE	EDWARD E FOWLER	Gna	1	0	0	0	1
FOWLERW	WALTER FOWLER	Gna	0	1	0	0	1

RAL Missing Shareholders - 18th July 2019

FOX DAR	D A R FOX	Gna	0	1	0	0	1
FRANCESL	LOUIS FRANCES	Gna	0	1	0	0	1
FRANCISNA	NOEL A FRANCIS	Gna	1	0	0	0	1
FRANKLINR	RUSSELL T FRANKLIN	Gna	2	0	0	0	2
FRASERDC	DESMOND C FRASER	Gna	3	0	0	0	3
FRASERKJ	KENNETH J L FRASER	Gna	2	0	0	0	2
FRASERMM	MICHAEL M FRASER	Gna	0	1	0	0	1
FRASERNK	NORMAN K FRASER	Gna	1	0	0	0	1
FRASERRM	RACHAEL M FRASER	Gna	0	0	1	0	1
FRASERSUS	SUSAN LYDIA FRASER	Gna	1	0	1	0	2
FRASERWA	WILLIAM A FRASER	Gna	6	0	10	0	16
FREARSOND	DONALD G FREARSON	Gna	0	1	0	0	1
FREEDJL	JOHN L FREED	Gna	0	1	0	0	1
FRISKENWM	ESTATE OF WILMA M FRISKEN	Gna	0	0	1	0	1
FROSTC	C FROST	Gna	0	1	0	0	1
FROSTLH	LAURENCE H FROST	Gna	2	0	0	0	2
FUTTERJW	J W FUTTER	Gna	0	1	0	0	1
GADDUMDFM	DIANE F M GADDUM	Gna	2	0	0	0	2
GALBRAITH	JOYCE M S GALBRAITH	Gna	3	0	3	0	6
GALLERA	ANTHONY GALLER	Gna	1	0	1	0	2
GALLR	RICHARD GALL	Gna	0	1	0	0	1
GALLT	TIMOTHY GALL	Gna	0	1	0	0	1
GARDINERAD	ARNOLD D C GARDINER	Gna	0	1	0	0	1
GARDNERG	GEORGINA GARDNER	Gna	0	1	0	0	1
GARDNERMK	MABEL K GARDNER	Gna	1	0	0	0	1
GARDNERPC	PHILIP C GARDNER	Gna	0	1	0	0	1
GARLANDHC	HELEN C GARLAND	Gna	1	0	0	0	1
GATESE	THE ESTATE OF EDITH GATES	GNA	1	0	1	0	2
GATESJA	JOHN A GATES	GNA	1	0	1	0	2
GATESPJ	PETER J GATES	Gna	0	0	1	0	1
GATESSC	STEPHAN CHARLES GATES	GNA	1	0	0	0	1
GAUDINBJ	BEVERLEY J GAUDIN	Gna	1	0	0	0	1
GAUDINEC	ELIZABETH C GAUDIN	Gna	1	0	0	0	1
GAUDINHJ	HOWARD J GAUDIN	Gna	1	0	0	0	1
GEARYMVA	MICHAEL V A GEARY	Gna	1	0	0	0	1
GEDDISPL	PATRICIA L GEDDIS	Gna	1	0	1	0	2
GEORGEAN	ARTHUR N B GEORGE	Gna	1	0	1	0	2
GEORGEJA	JENNIFER A GEORGE	Gna	0	1	0	0	1
GERRARDI	IAN GERRARD	Gna	0	1	0	0	1
GERRINGD	D G GERRING	Gna	1	0	0	0	1
GERRINGRW	ROBERT W GERRING	Gna	1	0	0	0	1
GIBBONSAD	ALISON D GIBBONS	Gna	0	1	0	0	1
GIBBONSE	ELSIE GIBBONS	GNA	1	0	1	0	2
GIBBONSFN	FRED N GIBBONS	Gna	0	1	0	0	1
GIBSONCC	CHARLES C GIBSON	Gna	1	0	0	0	1
GIBSONJA	JENNIFER A GIBSON	Gna	0	1	0	0	1
GIFFORDC	COLIN G GIFFORD	Gna	1	0	0	0	1
GIFFORDFA	FELICITY A GIFFORD	GNA	1	0	0	0	1
GIFFORDWR	WENDY R GIFFORD	Gna	1	0	0	0	1
GILBERDRI	THE ESTATE OF RICHARD I GILBERD	GNA	1	0	1	0	2
GILBERTOR	OLIVER R GILBERT	Gna	1	1	1	0	3
GILBERTSO	FELICITY E C GILBERTSON	Gna	1	0	0	0	1
GILCHRIST	JUDITH M GILCHRIST	Gna	0	1	0	0	1
GILCHRIST	ROBERT V GILCHRIST	Gna	0	1	0	0	1
GILCHRIST	TIMOTHY GILCHRIST	Gna	0	1	0	0	1
GILESPH	PETER H GILES	Gna	2	0	0	0	2
GILESTR	THOMAS R GILES	GNA	2	0	2	0	4
GILLD	DAVID GILL	Gna	0	1	0	0	1
GILLIESGC	GRAEME C GILLIES	Gna	1	0	0	0	1
GILMOURR	ROBERT GILMOUR	GNA	1	0	1	0	2
GLASGOWWJ	WILLIAM J GLASGOW	Gna	1	0	1	0	2
GLOVERL	LEWIS GLOVER	Gna	0	1	0	0	1
GNA	SARAH M TREMEWAN	Gna	1	0	1	0	2
GODFREYMR	MICHAEL R GODFREY	GNA	2	0	2	0	4
GODSELLF	FRANK GODSELL	Gna	1	0	1	0	2
GOINGVD	VALMAI D GOING	GNA	1	0	1	0	2
GOLDFINCH	JOHN F GOLDFINCH	GNA	4	0	5	0	9
GOLDINGBE	BRIGITTE E L GOLDING	Gna	0	1	0	0	1
GOLDINGJA	JOHN A GOLDING	Gna	0	1	0	0	1
GOLDSTONE	RAYMOND L GOLDSTONE	Gna	0	1	0	0	1
GOLDWATER	KIM J GOLDWATER	Gna	5	0	0	0	5
GOODHUEG	GLENN GOODHUE	Gna	0	1	0	0	1
GOODWINDJ	DAVID J GOODWIN	Gna	1	0	0	0	1
GORDONAD	ANDREW D GORDON	Gna	1	0	1	0	2
GOREBK	BRUCE K GORE	Gna	0	1	0	0	1

RAL Missing Shareholders - 18th July 2019

GORECB	COLIN B GORE	Gna	0	1	0	0	1
GORER	RHODA GORE	Gna	0	1	0	0	1
GOTLIEBMT	MARCUS T GOTLIEB	GNA	2	0	2	0	4
GOULDR	RICHARD GOULDING	GNA	1	0	1	0	2
GOULDSF	STEPHEN F GOULD	Gna	1	0	0	0	1
GOWERD	DEREK GOWER	GNA	0	1	0	0	1
GOWINGBLA	JENNIFER GOWING -BLACK	Gna	0	0	1	0	1
GOWINGRO	ROGER D GOWING	Gna	0	1	0	0	1
GOWJB	JAMES B W GOW	Gna	1	0	1	0	2
GOYNEL	LOUSE GOYNE	GNA	0	0	1	0	1
GOYNEMS	MARTIN S GOYNE	Gna	0	0	1	0	1
GRACEAR	ANDREW RUSSELL GRACE	GNA	2	0	2	0	4
GRAHAM G	GARY DONALD GRAHAM	GNA	2	0	0	0	2
GRAHAMAM	ALISON M GRAHAM	Gna	1	0	0	0	1
GRAHAMMS	MICHAEL S GRAHAM	Gna	2	0	2	0	4
GRAHAMS	STEWART GRAHAM	Gna	0	1	0	0	1
GRANTAB	ARCHIBALD B GRANT	Gna	0	1	0	0	1
GRANTK	K GRANT	Gna	1	0	1	0	2
GRAYCR	CLARENCE R GRAY	GNA	0	1	0	0	1
GRAYNJ	NICOLA JANE GRAY	Gna	4	1	4	0	9
GRAYRF	ROBERT F GRAY	Gna	0	1	0	0	1
GRAYSONJJ	JOSEPH J GRAYSON	Gna	1	0	1	0	2
GRAYWBMF	WILLIAM B & MALCOLM F GRAY ELSPETH BARTER	Gna	0	0	1	0	1
GREENAF	ALLAN FRASER GREEN	Gna	0	1	0	0	1
GREENAWAY	ALAN W GREENAWAY	Gna	0	1	0	0	1
GREENBS	BRIAN S GREEN	Gna	0	1	0	0	1
GREENDL	DOROTHEA L GREEN	Gna	0	1	0	0	1
GREENES	ERIC S GREEN	Gna	0	1	0	0	1
GREENK	KATHLEEN GREEN	Gna	0	1	0	0	1
GREENLEES	WILLIAM F GREENLEES	Gna	0	1	0	0	1
GREENNE	NAN E GREEN	Gna	0	1	0	0	1
GREGGR	ROBERT GREGG	GNA	1	0	1	0	2
GREGORYTA	KIM GREGORY TAUKINI	Gna	1	0	0	0	1
GREIGSL	SUSSANNE L GREIG	Gna	0	1	0	0	1
GRIFFINE	ELIZABETH GRIFFIN	Gna	1	0	0	0	1
GRIFFINJC	JOCELYN C GRIFFIN	Gna	1	0	0	0	1
GRIFFINR	ROSEMARY GRIFFIN	Gna	1	0	0	0	1
GRIFFINTR	THOMAS R GRIFFIN	Gna	2	1	2	0	5
GRIFFITHH	HELEN JANET GRIFFITH	Gna	0	0	1	0	1
GRIMMONDN	NICOLA M GRIMMOND	GNA	1	0	1	0	2
GROOMEME	MICHAEL EDWARD GROOME	GNA	5	0	5	0	10
GROSSMANJ	JOSEPH GROSSMAN	Gna	2	0	2	0	4
GRUMITTB	BRUCE GRUMITT	Gna	0	1	0	0	1
GUTHRIEAG	ALEXANDER G GUTHRIE	GNA	1	0	1	0	2
GUYAD	ANDREW D GUY	Gna	1	0	1	0	2
HAGENJD	JAMES D HAGEN	Gna	0	2	0	0	2
HAGENSONR	RICHARD A HAGENSON	GNA	2	0	2	0	4
HALLD	DAVID HALL	Gna	0	1	0	0	1
HALLED	ELIZABETH D HALL	Gna	1	0	1	0	2
HALLETTMR	M R J HALLETT	Gna	0	1	0	0	1
HALLETS	S HALLETT	Gna	1	0	0	0	1
HALLJ	JOHNATHON HALL	Gna	2	0	0	0	2
HALLOL	OLIVE L HALL	Gna	2	0	0	0	2
HALLRH	ROBERT H HALL	Gna	2	0	2	0	4
HALLRS	THE ESTATE OF ROGER S HALL	Gna	1	0	0	0	1
HALSTEADP	PETER F HALSTEAD	Gna	0	1	0	0	1
HAMILTOND	DUNCAN HAMILTON	Gna	1	0	1	0	2
HAMILTONJG	J G HAMILTON	Gna	5	0	5	0	10
HAMLINGE	GRACE E HAMLIN	Gna	0	1	0	0	1
HAMLINNE	NINA E HAMLIN	Gna	0	1	0	0	1
HAMLINNH	NANCY H HAMLIN	Gna	0	1	0	0	1
HAMMONDS	SIMON EDWARD HAMMOND	Gna	1	0	1	0	2
HANCOCKJR	JOHN R HANCOCK	Gna	1	0	1	0	2
HANSENKE	KATHRYN E HANSEN	Gna	0	0	1	0	1
HANSENKJ	KENNETH J HANSEN	Gna	1	0	1	0	2
HANSENSO	STANLEY O HANSEN	Gna	0	1	0	0	1
HANSONJA	JUDITH A HANSON	GNA	2	0	0	0	2
HANSONPI	PRISCILLA I HANSON	Gna	2	0	0	0	2
HARDLEYKM	KAY M HARDLEY	Gna	1	0	0	0	1
HAROLDBR	BETTINA R HAROLD	Gna	0	1	0	0	1
HAROLDR	ROSS HAROLD	Gna	0	1	0	0	1
HARRINGTO	FRANCIS C HARRINGTON	Gna	0	1	0	0	1
HARRISCW	CHARLES W HARRIS	Gna	2	0	0	0	2
HARRISML	MARJORIE L HARRIS	Gna	1	0	0	0	1
HARRISOND	DONALD HARRISON	Gna	1	0	1	0	2

HARRISONJ	JOHN G H HARRISON	Gna	1	0	0	0	1
HARRISONR	THE ESTATE OF RICHARD J HARRISON	Gna	3	0	0	0	3
HARRISONV	THE ESTATE OF VINCENT G HARRISON	Gna	1	0	0	0	1
HARRISPJ	PHILIP J HARRIS	Gna	1	0	0	0	1
HARRISR	RM & GC HARRIS	GNA	3	0	13	0	16
HARRISRD	ROBERT D M HARRIS	Gna	0	1	0	0	1
HARRISSC	STEPHEN C HARRIS	Gna	1	0	0	0	1
HARTLI	LEIGH I HART	GNA	1	0	1	0	2
HASLAMJS	JOHN S HASLAM	Gna	2	0	0	0	2
HASTWELLA	ALEX HASTWELL	Gna	1	0	0	0	1
HAWKINSDO	DOUGLAS O & FLORENCE L HAWKINS	Gna	2	0	2	0	4
HAYSONDV	MR DAVID V HAYSON	Gna	1	0	0	0	1
HEADLEYJD	JACK D HEADLEY	Gna	0	1	0	0	1
HEDGESBD	BRYAN D HEDGES	Gna	1	0	1	0	2
HEDGESNA	NGAERE A HEDGES	Gna	1	0	0	0	1
HEDGESRC	ROXANNA C HEDGES	Gna	0	0	1	0	1
HEDLEYL	LOUISE HEDLEY	Gna	0	0	1	0	1
HEIFORDMR	MAUREEN R HEIFORD	Gna	1	0	0	0	1
HENDERSON	BRUCE HENDERSON	Gna	1	0	0	0	1
HENDERSON	BRUCE K HENDERSON	Gna	0	1	0	0	1
HENDERSON	GITA HENDERSON	Gna	0	1	0	0	1
HENDERSON	JOHN W HENDERSON	Gna	0	1	0	0	1
HENDERSON	JUDY A HENDERSON	Gna	0	1	0	0	1
HENDERSON	MARLENE S HENDERSON	Gna	0	1	0	0	1
HENDERSON	OWEN BRUCE HENDERSON	Gna	0	1	0	0	1
HENNESSYJ	JOHN M HENNESSY	Gna	0	1	0	0	1
HENRYJL	JENNIFER L HENRY	Gna	1	0	0	0	1
HENSONGR	GRAHAM R HENSON	Gna	1	1	1	0	3
HERRICKDA	DOROTHY A R HERRICK	Gna	1	0	1	0	2
HEYWARDCW	THE ESTATE OF CHARLES W HEYWARD	GNA	30	0	0	0	30
HICKEYJM	MRS J M HICKEY	Gna	1	0	1	0	2
HICKLINGK	MRS K H HICKLING	GNA	1	0	1	0	2
HIGGINSWB	THE ESTATE OF W B HIGGINS	GNA	1	0	0	0	1
HILFORDNG	NEIL G HILFORD	Gna	0	1	0	0	1
HILLARYJR	JOHN R HILLARY	Gna	0	1	0	0	1
HILLEB	ELIZABETH B HILL	Gna	0	1	0	0	1
HILLGW	GEOFFREY W HILL	Gna	1	0	1	0	2
HILLIAMAC	ARTHUR C HILLIAM	Gna	0	1	0	0	1
HILLIAMHJ	HELEN J HILLIAM	Gna	0	1	0	0	1
HILLIAMJG	JOHN G HILLIAM	GNA	0	1	0	0	1
HILLIAMJS	JOAN S HILLIAM	Gna	0	1	0	0	1
HILLMR	MARGARET R HILL	GNA	2	0	0	0	2
HILLRE	ROWAN E HILL	Gna	0	1	0	0	1
HILLRS	RONALD S HILL	Gna	0	1	0	0	1
HILLWJ	WENDY J HILL	Gna	0	1	0	0	1
HILLYERPG	PETER G HILLYER	Gna	1	0	1	0	2
HINDMARSH	C HINDMARSH	Gna	0	1	0	0	1
HINEW	WILLIAM HINE	Gna	1	0	1	0	2
HOBMANB	BEVERLEY HOBMAN	Gna	0	1	0	0	1
HOBMANBB	BARRY B HOBMAN	Gna	0	1	0	0	1
HOBMANPE	PATRICIA E HOBMAN	Gna	0	1	0	0	1
HODGSOND	DENNIS HODGSON	Gna	4	0	0	0	4
HOFFT	TREVOR HOFF	Gna	1	0	0	0	1
HOGGDG	DAVID G HOGG	GNA	1	0	1	0	2
HOGGPJ	PETER J HOGG	GNA	1	0	1	0	2
HOLEB	BELLE HOLE	Gna	1	0	1	0	2
HOLEKM	KENNETH M HOLE	Gna	1	0	1	0	2
HOLLISE	ELAINE HOLLIS	Gna	2	0	0	0	2
HOLMESHR	HARRY R HOLMES	Gna	0	1	0	0	1
HOLMWOODR	RICHARD D HOLMWOOD	Gna	1	0	0	0	1
HONEYFIEL	JOHN C HONEYFIELD	GNA	5	0	0	0	5
HOOGENDOR	SYLVIA JACOB A WILHELMINA HOOGENDORP	GNA	1	0	0	0	1
HOOKERM	MICHAEL HOOKER	Gna	1	0	0	0	1
HOOPERPM	P M HOOPER	Gna	0	1	0	0	1
HOPWOODDL	DIANE L HOPWOOD	Gna	1	0	0	0	1
HOPWOODNS	NOEL S HOPWOOD	Gna	1	0	0	0	1
HORROCKSJ	THE ESTATE OF JOHN B HORROCKS	GNA	10	0	10	0	20
HORSFORDJ	JILLIAN M HORSFORD	Gna	0	1	0	0	1
HORWOODM	MICHAEL HORWOOD	GNA	0	1	0	0	1
HOSKINGJ	JULIA HOSKING	Gna	0	1	0	0	1
HOUGHTONB	BRUCE H HOUGHTON	Gna	0	1	0	0	1
HOWARDNH	NANCY H HOWARD	Gna	1	0	0	0	1
HOWARTHJA	JUDITH A C HOWARTH	Gna	1	0	0	0	1
HOWARTHM	MICHAEL HOWARTH	Gna	0	1	0	0	1
HOWARTHMG	MARY G HOWARTH	Gna	1	0	0	0	1

HOWIEJS	JOHN S HOWIE	Gna	2	0	2	0	4
HUDSONF	FRANK HUDSON	Gna	0	1	0	0	1
HUDSONGE	GWENDOLINE E HUDSON	GNA	2	0	2	0	4
HUISMANC	CLAIRE HUISMAN	Gna	0	1	0	0	1
HULLPG	PETER G HULL	Gna	0	1	0	0	1
HULSDOUWM	MARINUS E HULSDOUW	GNA	2	0	0	0	2
HUMPHRIES	DAVID P HUMPHRIES	GNA	4	0	0	0	4
HUMPHRIES	MARY A HUMPHRIES	Gna	0	1	0	0	1
HUMPHRIES	MURRY M HUMPHRIES	Gna	0	1	0	0	1
HUNTB	BRIAN L HUNT	Gna	0	1	0	0	1
HUNTBR	BRIAN R HUNT	GNA	1	0	0	0	1
HUNTC	CHRISTOPHER HUNT	Gna	1	0	1	0	2
HUNTERDR	DANIEL R HUNTER	Gna	2	0	2	0	4
HUNTERGP	GEORGE P HUNTER	Gna	0	1	0	0	1
HUNTERJR	JILLIAN R HUNTER	GNA	1	0	0	0	1
HUNTERKCP	KAREN C P HUNTER	Gna	0	1	0	0	1
HUNTERMI	MICHAEL I HUNTER	Gna	2	0	2	0	4
HUNTK	KATHRYN HUNT	Gna	1	0	1	0	2
HUNTP	PATRICIA HUNT	Gna	1	0	1	0	2
HUNTP	PATRICK HUNT	Gna	1	0	1	0	2
HUNTPJ	PENELOPE J C HUNT	Gna	1	0	0	0	1
HUNTRD	ROBERT D HUNT	Gna	0	1	0	0	1
HUNTRS	ROSEMARY S HUNT	Gna	0	1	0	0	1
HUNTS	STEVEN A HUNT	Gna	0	2	0	0	2
HURTGP	GREGORY P HURT	GNA	1	0	0	0	1
HUSSEYLF	LIONEL F HUSSEY	Gna	2	0	2	0	4
HWEHJL	JANET L HWEH	Gna	1	0	1	0	2
IBELLDJ	D J IBELL	GNA	1	0	0	0	1
INGLISAE	ALISON E INGLIS	Gna	0	1	0	0	1
INGLISMY	MARY Y INGLIS	Gna	0	1	0	0	1
INGLISTL	TREVOR L INGLIS	Gna	0	1	0	0	1
INGRISCHS	SONIA INGRISH	Gna	0	0	1	0	1
INKSTERJH	JAMES H INKSTER	Gna	1	0	1	0	2
INKSTERMP	MAUREEN P INKSTER	Gna	1	0	1	0	2
INNESJG	JOHN G INNES	Gna	1	0	0	0	1
IRWINJG	ESTATE OF JANET G IRWIN	Gna	1	0	0	0	1
ISDALEL	LYNN ISDALE	Gna	0	1	0	0	1
IZARDSM	SUZANNE M IZARD	Gna	10	0	10	0	20
JACKSONB	BARRY JACKSON	Gna	1	0	0	0	1
JACKSONGC	GARRY C JACKSON	Gna	0	1	0	0	1
JACKSONGE	GRAHAM E JACKSON	GNA	1	0	1	0	2
JACKSONH	HAYLEY SUSAN JACKSON	GNA	1	0	1	0	2
JACKSONHJ	HEATHER J JACKSON	Gna	1	0	0	0	1
JACKSONK	KRISTINA ANN JACKSON	GNA	1	0	1	0	2
JACKSONLH	THE ESTATE OF LYAL H JACKSON	GNA	1	0	1	0	2
JACKSONM	MEGAN JACKSON	Gna	0	0	1	0	1
JACKSONMK	THE ESTATE OF MARJORIE KIRKLANDJACKSON	GNA	10	0	10	0	20
JACKSONR	ROSS CAMPBELL JACKSON	GNA	1	0	1	0	2
JACKSONTD	TREVOR D JACKSON	Gna	0	1	0	0	1
JACOBSENW	WINSOME B JACOBSEN	Gna	0	1	0	0	1
JAMESDDI	DIANA D I JAMES	Gna	1	0	1	0	2
JAMESH	HELEN JAMES	Gna	0	1	0	0	1
JAMESIC	THE ESTATE OF IVAN CLIFFORD JAMES	Gna	1	0	1	0	2
JARDINEGM	GORDON M JARDINE	Gna	0	1	0	0	1
JARVIEHM	THE ESTATE OF HELEN M JARVIE	Gna	0	0	1	0	1
JEFFERYAD	ALBAN D JEFFERY	Gna	2	0	2	0	4
JENKINM	THE ESTATE OF MARIE JENKIN	Gna	0	1	0	0	1
JENKINMD	MURRY D JENKIN	GNA	0	1	0	0	1
JENKINSDC	DONALD C JENKINS	Gna	0	1	0	0	1
JENKINSN	NOLA JENKINS	Gna	0	1	0	0	1
JENKINSP	PAULINE JENKINS	Gna	0	1	0	0	1
JOHNSONAF	AIRES F JOHNSON	Gna	1	0	0	0	1
JOHNSONBL	BRIAN L JOHNSON	Gna	0	1	0	0	1
JOHNSONBN	BRUCE N JOHNSON	Gna	0	1	0	0	1
JOHNSONCA	CLIVE A JOHNSON	Gna	0	1	0	0	1
JOHNSONCN	CHARLES N JOHNSON	Gna	1	0	1	0	2
JOHNSONG	GAIL JOHNSON	Gna	1	0	0	0	1
JOHNSONJ	JOAN JOHNSON	Gna	1	0	0	0	1
JOHNSONJG	JENNIFER G JOHNSON	Gna	1	0	0	0	1
JOHNSONNF	N F JOHNSON	Gna	0	1	0	0	1
JOHNSONPE	PAULINE E JOHNSON	Gna	0	1	0	0	1
JOHNSTONA	ALAN S JOHNSTON	Gna	0	6	0	0	6
JOHNSTONE	ALLAN H JOHNSTONE	Gna	1	0	1	0	2
JOHNSTONE	C M JOHNSTONE	Gna	1	0	1	0	2
JOHNSTONE	THE ESTATE OF JOHN M JOHNSTONE	Gna	1	0	1	0	2

JOHNSTONE	DOUGLAS W JOHNSTONE	Gna	0	1	0	0	1
JOHNSTONE	GRAEME B JOHNSTONE	Gna	0	1	0	0	1
JOHNSTONE	GILBERT C JOHNSTONE	Gna	1	0	0	0	1
JOHNSTONE	KATHERINE M JOHNSTONE	Gna	0	1	0	0	1
JOHNSTONE	RAYMOND K JOHNSTONE	Gna	0	1	0	0	1
JOHNSTONG	GORDON D JOHNSTON	Gna	0	1	0	0	1
JOHNSTONH	HUGO R JOHNSTON	Gna	0	1	0	0	1
JOHNSTONJ	JAMES M JOHNSTON	Gna	0	1	0	0	1
JOHNSTONRA	ROBERT ALASTAIR JOHNSTON	Gna	3	0	3	0	6
JOLLYAG	Estate of Alan G Jolly	Gna	1	0	0	0	1
JOLLYAM	Estate of Alfred Martin Jolly	Gna	1	0	0	0	1
JOLLYBB	BERYL B JOLLY	Gna	1	0	0	0	1
JOLLYNR	NIGEL R JOLLY	Gna	1	0	0	0	1
JOLLYTM	TIMOTHY M JOLLY	Gna	1	0	0	0	1
JONESBH	BRIAN H JONES	Gna	3	0	3	0	6
JONESD	DAVID JONES	Gna	1	0	1	0	2
JONESDF	DUDLEY F JONES	Gna	1	0	0	0	1
JONESKM	KENNETH M JONES	Gna	0	1	0	0	1
JONESMA	MICHAEL A JONES	Gna	0	1	0	0	1
JONESRG	ROSS G JONES	Gna	1	0	1	0	2
JONESRL	RODNEY L JONES	Gna	3	0	3	0	6
JONESRL	RICHARD L JONES	Gna	0	1	0	0	1
JONESSG	STUART G JONES	Gna	1	0	1	0	2
JONESTP	TORI P JONES	Gna	5	0	0	0	5
JONGENEEL	W JONGENEEL	Gna	0	1	0	0	1
JORDANJC	JUDITH C JORDAN	Gna	1	0	0	0	1
JORDANTL	TERRY L JORDAN	Gna	1	0	1	0	2
JORGENSEN	BENT JORGENSEN	Gna	0	0	1	0	1
JORGENSEN	ERIK JORGENSEN	Gna	0	0	1	0	1
JORGENSON	PAUL M JORGENSON	Gna	1	0	0	0	1
JUDDWR	WYNN R JUDD	Gna	1	0	1	0	2
JUDGEH	HELEN JUDGE	Gna	1	0	1	0	2
JUDGEMJ	MICHAEL J JUDGE	Gna	1	0	1	0	2
JUDKINSGC	GERALDINE C JUDKINS	Gna	1	0	1	0	2
KALFASDD	DENISE D KALFAS	Gna	0	1	0	0	1
KALFASDD	SIMON D KALFAS	Gna	0	1	0	0	1
KALLMANSA	STEPHEN A KALLMAN	Gna	0	1	0	0	1
KATENEM	MARAMA KATENE	Gna	0	0	1	0	1
KAYEE	EDWIN E KAY	Gna	0	1	0	0	1
KAYK	KENNETH KAY	Gna	0	1	0	0	1
KEELINGAH	ALAN H S KEELING	Gna	5	0	5	0	10
KEILLERRE	ROBERT E KEILLER	Gna	3	0	0	0	3
KELLYLM	LAUREL M KELLY	Gna	1	0	0	0	1
KELLYPM	PATRICIA M KELLY	Gna	1	0	0	0	1
KEMPHC	HUGH C G KEMP	Gna	2	1	0	0	3
KENDALLB	BRETT KENDALL	Gna	0	1	0	0	1
KENDALLEL	ERIC L KENDALL	Gna	0	1	0	0	1
KENDALLS	SCOTT KENDALL	Gna	0	1	0	0	1
KENNEDYMF	MALCOLM F KENNEDY	Gna	0	1	0	0	1
KERRED	ELIZABETH DANSKINKERR	Gna	0	1	0	0	1
KERROHANR	RONALD C KERROHAN	Gna	1	0	1	0	2
KERRYPE	PETER E KERRY	Gna	0	0	1	0	1
KERSTENB	BARBARA KERSTEN	Gna	0	0	1	0	1
KEYSMG	MAURICE G KEYS	Gna	0	1	0	0	1
KEYWORTHG	GEORGE GWYNNE KEYWORTH	Gna	3	0	3	0	6
KIDDBL	BRUCE L KIDD	Gna	5	0	5	0	10
KIDDJM	JUDITH M KIDD	Gna	5	0	5	0	10
KIDDLEG	GARY KIDDLE	Gna	0	0	1	0	1
KIDDLEL	LYNNE KIDDLE	Gna	0	0	1	0	1
KIDDLEWK	WILFRED K KIDDLE	Gna	2	0	0	0	2
KIERNANDE	K D KIERNANDER	Gna	0	1	0	0	1
KIERNANDE	KEITH KIERNANDER	Gna	1	0	0	0	1
KIMPTONGR	GEORGE R O KIMPTON	Gna	2	0	0	0	2
KINGEF	ELEANOR F KING	Gna	1	0	1	0	2
KINGGZ	GLENNIS Z KING	Gna	1	0	0	0	1
KINGHAME	ERIC KINGHAM	Gna	1	0	0	0	1
KINGHM	HANLEY M T KING	Gna	1	0	0	0	1
KINGJ	PETER MILLS & JAMES KING	Gna	5	0	5	0	10
KINGL	LEWIS KING	Gna	1	0	1	0	2
KINGM	MICHAEL KING	Gna	1	0	1	0	2
KINGP	PETER KING	Gna	1	0	1	0	2
KINGR	RICHARD KING	Gna	1	0	1	0	2
KINGRI	ROBERT I S KING	Gna	4	0	4	0	8
KINGS	SHIRLEY KING	Gna	1	0	1	0	2
KINGSTONJ	JAMES R B KINGSTON	Gna	5	0	5	0	10

KINGSTONJ	JOHN R KINGSTON JNR	Gna	1	0	0	0	1
KINGTC	TERENCE C KING	Gna	1	0	0	0	1
KINGTD	TREVOR D & ALLAN KING	Gna	5	0	5	0	10
KIRBYJL	JOAN L KIRBY	Gna	0	1	0	0	1
KIRBYMJ	MACK J KIRBY	Gna	1	0	0	0	1
KIRKERMJ	MARGARET J KIRKER	Gna	3	0	0	0	3
KLISSERH	H KLISSER	Gna	1	0	1	0	2
KNIGHTING	VERONICA R KNIGHTINGALE	Gna	0	1	0	0	1
KNIGHTJ	JANET KNIGHT	Gna	2	0	2	0	4
KNOTTENBE	ROBERT I KNOTTENBELT	Gna	5	3	5	0	13
KNOTTENBE	FRANS KNOTTENBELT	Gna	0	0	1	0	1
KNOWSLEY	HARLEY G KNOWSLEY	Gna	1	0	0	0	1
KNUCKEY	MAURICE J KNUCKEY	Gna	2	0	2	0	4
KNUCKEYL	LYNDSAY KNUCKEY	Gna	1	0	0	0	1
KOLTHEKR	RUDOLF KOLTHEK	Gna	5	0	5	0	10
KOOREYBL	BRYAN L KOOREY	Gna	0	1	0	0	1
KORETZE	ERNEST KORETZ	Gna	5	0	0	0	5
KREBSJR	JOHN R KREBS	GNA	1	0	1	0	2
KRENEKE	ELIZABETH KRENEK	Gna	0	1	0	0	1
KRENEKS	STEPHEN KRENEK	Gna	0	1	0	0	1
KRSDS	DIANE S KRS	Gna	1	0	1	0	2
KRSRZ	RICHARD Z KRS	Gna	1	0	1	0	2
KYLEWG	THE ESTATE OF WILLIAM G KYLE	Gna	1	0	1	0	2
LAIRDAAG	ALISON A G LAIRD	Gna	1	0	0	0	1
LAIRDKR	KIRSTIN R LAIRD	Gna	1	0	0	0	1
LAIRDMR	MURRAY R LAIRD	Gna	1	0	1	0	2
LAIRDVM	VANESSA M LAIRD	Gna	1	0	0	0	1
LAITYAF	ANTHONY F LAITY	GNA	0	0	1	0	1
LAMBEJA	JOHN A LAMBE	Gna	1	0	1	0	2
LAMBERTHE	HEATHER E E LAMBERT	Gna	1	2	2	0	5
LAMBERTJS	JOHN S H LAMBERT	Gna	1	1	1	0	3
LAMBPA	PETER A LAMB	Gna	1	0	0	0	1
LANERP	ROSEMARY P LANE	Gna	0	1	0	0	1
LAROCHEMC	MELISSA C LA ROCHE	Gna	10	0	0	0	10
LARSENJW	JULIET W LARSEN	Gna	1	0	1	0	2
LATHAMH	HILDA LATHAM	Gna	1	0	1	0	2
LATHAMJM	JOHN M LATHAM	Gna	2	0	2	0	4
LATHAMLP	LEWIS P LATHAM	Gna	0	1	0	0	1
LATHAMTF	THOMAS F LATHAM	Gna	1	0	1	0	2
LATHAMWD	WILLIAM D LATHAM	Gna	2	0	2	0	4
LATTACR	CLARENCE R LATTA	Gna	0	0	1	0	1
LATTAJR	JOCELYN R LATTA	Gna	0	0	1	0	1
LAURENSON	DAWN LAURENSON	GNA	1	0	1	0	2
LAURENSON	GRAEME C LAURENSON	GNA	0	1	0	0	1
LAURENSONKJU	Joshua Utiku Laurenson	GNA	2	0	2	0	4
LAWFORDPC	P C LAWFORD	Gna	1	0	1	0	2
LAWRENCEH	HYLDA B LAWRENCE	Gna	0	1	0	0	1
LAWRENCEJ	JOHN C LAWRENCE	Gna	1	0	0	0	1
LAWRENCER	RONALD G LAWRENCE	Gna	0	1	0	0	1
LAWSONJEB	JOHN E B LAWSON	GNA	1	0	1	0	2
LAWSONPA	PETER A LAWSON	Gna	0	1	0	0	1
LAXONDB	DONALD B LAXON	Gna	5	0	5	0	10
LEATHERBL	B L LEATHER	Gna	0	2	0	0	2
LECKIEC	CAROL ANNE LECKIE	Gna	1	0	1	0	2
LEEJL	JOY J LEE	Gna	2	0	2	0	4
LEEMARTIN	GEOFFREY LEE-MARTIN	Gna	3	0	3	0	6
LEEMV	MELVIN V LEE	Gna	0	0	1	0	1
LEESJRM	JOHN R M LEES	GNA	1	0	1	0	2
LEICESTER	GEOFFREY A LEICESTER	Gna	2	0	2	0	4
LEITCHJH	JOHN H LEITCH	Gna	5	0	5	0	10
LENARTJ	JUDITH LENART	Gna	0	2	0	0	2
LENNIEDM	DAVID M LENNIE	Gna	1	0	0	0	1
LENNIEM	MAGNUS LENNIE	Gna	4	0	4	0	8
LEONGP	PETER LEONG	Gna	1	0	0	0	1
LEPROHONJ	JOSEPHINE A LEPROHON	Gna	2	0	0	0	2
LESLIEJF	JOHN F LESLIE	Gna	2	0	1	0	3
LESNIEJC	JOHN C LESNIE	Gna	10	0	0	0	10
LEVARREWA	JANET S LEVARRE-WATERS	Gna	0	1	0	0	1
LEWISA	ANN LEWIS	Gna	0	1	0	0	1
LEWISDA	DON A LEWIS	Gna	1	0	1	0	2
LEWISFL	ESTATE FLORENCE LLEWIS	Gna	1	0	0	0	1
LEWISGI	GABRIELLE I LEWIS	Gna	1	0	0	0	1
LEWISHAM	MARK ROBERT LEWISHAM	GNA	1	0	0	0	1
LEWISJM	JACQUELINE M LEWIS	Gna	1	0	0	0	1
LEWISJUM	JUSTINE U M LEWIS	Gna	1	0	0	0	1

LEWISPJ	PETER J LEWIS	Gna	1	0	0	0	1
LEWISRM	ROSALIND MARY LEWIS	Gna	1	0	1	0	2
LEYSTH	THE ESTATE OF THOMPSON H LEYS	Gna	10	0	10	0	20
LINSTROMB	BRAD ALEXANDER LINSTROM	GNA	10	0	0	0	10
LISHMANDW	DAVID WILLIAM BRANDON LISHMAN	Gna	3	0	3	0	6
LISNERJH	J H LISNER	Gna	0	1	0	0	1
LISNERTS	T S LISNER	Gna	0	1	0	0	1
LISTERG	GRANT LISTER	Gna	0	0	1	0	1
LIVINGSTO	VERNA J LIVINGSTON	Gna	3	0	3	0	6
LOANRM	ROBERT MCLEAN LOAN	Gna	0	1	0	0	1
LOCKHEADR	RUSSELL W O LOCKHEAD	Gna	1	0	0	0	1
LOGANBM	BARBARA M LOGAN	Gna	2	1	0	0	3
LONGSM	S M LONG	Gna	1	0	0	0	1
LONGSW	STEPHEN W LONG	Gna	3	0	3	0	6
LONSDALEA	ATHOL R LONSDALE	Gna	2	0	2	0	4
LOOSBI	BRUNO I LOOS	Gna	0	1	0	0	1
LOVELLHS	HAROLD S LOVELL	Gna	1	0	0	0	1
LOVERIDGE	JAMES LOVERIDGE	Gna	2	0	0	0	2
LOVETTP	PAUL LOVETT	Gna	0	0	1	0	1
LOWEDG	DAVID G LOWE	GNA	1	0	1	0	2
LOWITHS	HARRY S LOWIT	Gna	1	0	0	0	1
LOWITJ	JACQUELINE LOWIT	Gna	1	0	0	0	1
LOWITLL	LORRAINE L LOWIT	Gna	1	0	0	0	1
LOWKL	KIM L LOW	GNA	1	0	1	0	2
LOWRYE	E LOWRY	Gna	0	1	0	0	1
LOWRYRHW	RALPH H W LOWRY	Gna	1	0	1	0	2
LOWSGH	STUART G H LOW	Gna	1	0	1	0	2
LUAGBYDW	DAVID W LUAGBY	Gna	1	0	0	0	1
LUNDDJ	OWYN MASON LUND	Gna	1	0	1	0	2
LUNDDJ	D J LUND	Gna	1	0	0	0	1
LUNDJA	J A LUND	GNA	1	0	1	0	2
LUSHERJM	JENNIFER M LUSHER	Gna	0	1	0	0	1
LYNGJE	JAMES E LYNG	Gna	1	0	1	0	2
LYONSB	BRIAN J LYONS	Gna	5	0	0	0	5
LYONSGE	GRAHAM E LYONS	Gna	0	1	0	0	1
LYONSJE	JAMES E LYONS	Gna	0	1	0	0	1
LYONSPE	P E LYONS	Gna	0	1	0	0	1
MACALLANIC	IAN C MACALLAN	Gna	1	0	0	0	1
MACDONALD	JUDITH N MACDONALD	Gna	5	0	5	0	10
MACEIO	INGA O MACE	Gna	1	0	1	0	2
MACEYBL	BRYAN L MACEY	Gna	0	1	0	0	1
MACEYMA	MARILYN A MACEY	Gna	0	1	0	0	1
MACFARLANAJ	ANNA J MACFARLANE	Gna	2	0	0	0	2
MACFARLANE	ALISTAIR ARMSTRONG MACFARLANE and COLIN EARL SMITH	Gna	2	0	0	0	2
MACKAYAM	AYNSLEY M MACKAY	Gna	1	0	0	0	1
MACKINTOS	HUGH D MACKINTOSH	Gna	0	1	0	0	1
MACKYJK	JOANNA K MACKY	Gna	1	0	0	0	1
MACKYMWC	MICHAEL W C MACKY	Gna	0	1	0	0	1
MACLACHLA	PAMELA A MACLACHLAN	Gna	0	1	0	0	1
MACLEODPS	PATRICIA S MACLEOD	Gna	10	0	0	0	10
MACNICOLB	BRIDGET MACNICOL	Gna	0	0	1	0	1
MADDAFORD	GEORGE W MADDAFORD	Gna	0	1	0	0	1
MAJORMM	MICHAELA M MAJOR	Gna	2	0	0	0	2
MALCOLMSM	JOHN MALCOLM-SMITH	Gna	0	1	0	0	1
MALCOLMSM	GILLIAN MALCOLM-SMITH	Gna	0	1	0	0	1
MALTBYTE	THOMAS E MALTBY	Gna	1	0	0	0	1
MANLEYEJ	EDITH J MANLEY	Gna	1	0	0	0	1
MANLEYRJ	ROBERT J MANLEY	Gna	1	0	0	0	1
MANNINGR	RONALD MANNING	Gna	1	0	1	0	2
MANNKS	KEITH S MANN	Gna	1	0	1	0	2
MANNN	NANETTE MANN	Gna	1	0	1	0	2
MANSONAM	ANGUS M MANSON	Gna	1	0	4	0	5
MANTMJ	MICHAEL J MANT	Gna	1	0	1	0	2
MAPLESCM	THE ESTATE OF CHRISTINE M MAPLES	Gna	1	0	0	0	1
MARCROFTL	LYNDON H MARCROFT	Gna	1	0	0	0	1
MARDELLIL	IAN L MARDELL	Gna	1	1	1	0	3
MARDONPJ	PETER J MARDON	Gna	0	1	0	0	1
MARKSJ	JENNIFER J MARKS	Gna	0	1	0	0	1
MARKUSLE	LESLIE MARKUS	gna	1	0	0	0	1
MARRISROB	ROBERT W MARRIS	Gna	1	0	0	0	1
MARSDENDR	DAVID R MARSDEN	GNA	2	0	2	0	4
MARSHALLA	ARTHUR H MARSHALL	Gna	3	0	3	0	6
MARSHALLA	ALAN B MARSHALL	Gna	1	0	1	0	2
MARSHALLB	BARRY W MARSHALL	Gna	0	1	0	0	1
MARSHALLL	LIONEL H W MARSHALL	Gna	3	0	3	0	6

RAL Missing Shareholders - 18th July 2019

MARSHALLN	NORMAN G MARSHALL	Gna	2	0	2	0	4
MARSHALLS	STANLEY R MARSHALL	Gna	0	1	0	0	1
MARSHI	I MARSH	Gna	0	1	0	0	1
MARTENSEN	BRETT N MARTENSEN	Gna	0	1	0	0	1
MARTINAF	ARTHUR F MARTIN	Gna	0	1	0	0	1
MARTINAND	ANDREW J MARTIN	Gna	0	1	0	0	1
MARTINAR	ANDREW R MARTIN	Gna	0	1	0	0	1
MARTINBA	BLAIR A MARTIN	Gna	0	1	0	0	1
MARTINBM	BELINDA M MARTIN	Gna	0	1	0	0	1
MARTINBR	BRIGIT R MARTIN	Gna	1	0	0	0	1
MARTINCJ	CHRISTOPHER J MARTIN	Gna	0	1	0	0	1
MARTINCRA	CAROL R A MARTIN	Gna	1	0	1	0	2
MARTINDP	DONALD P MARTIN	Gna	0	1	0	0	1
MARTINEA	ELAINE A MARTIN	Gna	0	1	0	0	1
MARTING	GWENDA MARTIN	Gna	0	1	0	0	1
MARTINGA	GARY A MARTIN	Gna	1	0	1	0	2
MARTINGE	GRANT E MARTIN	Gna	2	0	2	0	4
MARTINLEV	GEOFFREY MARTIN-LEVORSEN	Gna	1	0	1	0	2
MARTINNW	NICOLA W MARTIN	Gna	0	1	0	0	1
MARTINPA	PRUDENCE A MARTIN	Gna	0	1	0	0	1
MARTINRJ	ROBYN J MARTIN	Gna	0	1	0	0	1
MASONDH	DEREK H MASON	Gna	1	0	0	0	1
MASONKAY	KAY F MASON	Gna	0	1	0	0	1
MATHIESON	MAURICE W MATHIESON	Gna	0	3	0	0	3
MATHIESON	BRIAN D MATHIESON	Gna	0	1	0	0	1
MATHIESON	IRENE J MATHIESON	Gna	0	1	0	0	1
MATTHEWSJ	JACK D MATTHEWS	Gna	2	0	2	0	4
MAUBR	BRIAN R MAU	Gna	0	1	0	0	1
MAUJL	JUNE L MAU	Gna	0	1	0	0	1
MAUNSELLJ	THE ESTATE OF JOHN H T MAUNSELL	Gna	0	1	0	0	1
MAUNSELLP	PAUL L MAUNSELL	Gna	0	1	0	0	1
MAUNSELLR	ROBERT D MAUNSELL	Gna	0	1	0	0	1
MAXWELLGW	GRAEME W MAXWELL	Gna	0	1	0	0	1
MAYA	ALISON MAY	Gna	0	0	1	0	1
MAYEI	ERNEST I MAY	Gna	0	0	1	0	1
MAYJE	JENNIFER ELIZABETH MAY	Gna	0	0	1	0	1
MAYNA	NICOLA A MAY	Gna	0	0	1	0	1
MCARTHURJ	JOHN D MCARTHUR	Gna	0	1	0	0	1
MCASEYA	ALAN MCASEY	Gna	0	1	0	0	1
MCASEYB	BRENDA MCASEY	Gna	0	1	0	0	1
MCASEYPET	PETER L MCASEY	Gna	0	1	0	0	1
MCB	DARREN V MCBRIDE	Gna	10	0	10	0	20
MCCABENE	NEIL E MCCABE	GNA	0	1	0	0	1
MCCARTINB	BRIDGET MCCARTIN	Gna	1	0	0	0	1
MCCOMISHMJ	THE ESTATE OF MALLOY J MCCOMISH	Gna	1	0	4	0	5
MCCOMISHP	PRUDENCE MCCOMISH	Gna	1	0	0	0	1
MCCORKIND	IAN H MCCORKINDALE	GNA	1	0	1	0	2
MCCREDIEV	VIVIAN R MCCREDIE	Gna	1	0	0	0	1
MCCULLOCH	ANDREW R MCCULLOCH	Gna	0	1	0	0	1
MCDONALDI	IAN E MCDONALD	GNA	1	0	0	0	1
MCDONALDJ	J R MCDONALD	Gna	1	0	1	0	2
MCDONALDL	LORRAINE G MCDONALD	Gna	2	0	0	0	2
MCDOUGALL	VALDA E MCDOUGALL	Gna	0	1	0	0	1
MCENIRNEY	KEVIN F MCENIRNEY	Gna	2	0	0	0	2
MCENIRNEY	DIANNE MCENIRNEY	Gna	0	1	0	0	1
MCENNISI	IAN MCENNIS	GNA	1	0	1	0	2
MCGREGORB	BRIGID M MCGREGOR	Gna	2	0	0	0	2
MCGREGORB	BRUCE JOHN MCGREGOR	GNA	0	1	0	0	1
MCINTOSHD	DOUGAL MCINTOSH	Gna	1	0	0	0	1
MCIVENLK	LLOYD K MCIVER	Gna	0	1	0	0	1
MCKAYBR	BRUCE R MCKAY	Gna	1	0	1	0	2
MCKEEMK	MURIEL K MCKEE	Gna	2	0	2	0	4
MCKENZIES	SYBIL MCKENZIE	Gna	2	0	2	0	4
MCKINLAYRM	ROBIN M MCKINLAY	Gna	1	0	1	0	2
MCLAUCHLA	IAN M MCLAUCHLAN	Gna	0	1	0	0	1
MCLEANAJG	ANDREW J G MCLEAN	Gna	1	0	1	0	2
MCLEANCHG	CAMPBELL H G MCLEAN	Gna	1	0	1	0	2
MCLEANJLG	JOHN L G MCLEAN	Gna	1	0	1	0	2
MCLEANMJW	MICHAEL J W MCLEAN	Gna	1	0	0	0	1
MCLEANTB	T B MCLEAN	Gna	1	0	0	0	1
MCLEODGRA	GRAEME STUART MCLEOD	GNA	0	1	0	0	1
MCLEODGW	GRAEME W MCLEOD	Gna	0	1	0	0	1
MCLEODR	RONALD MCLEOD	Gna	1	0	0	0	1
MCNAIREM	ELAINE M MCNAIR	Gna	0	1	0	0	1
MCNAUGHTA	ALEXANDER W MCNAUGHT	Gna	2	0	0	0	2

MCNAUGHTO	NOEL S MCNAUGHTON	Gna	0	1	0	0	1
MCNEILLA	ANGUS MCNEILL	Gna	0	1	0	0	1
MCPHAILSH	SUSAN H MCPHAIL	Gna	2	0	2	0	4
MCQUADEBJ	BEVERLEY J MCQUADE	Gna	0	1	0	0	1
MCRAEC	CHERRIE MCRAE	Gna	0	1	0	0	1
MCSWEENEY	THOMAS B MCSWEENEY	Gna	2	0	2	0	4
MCSWEENEY	KATHERINE MCSWEENEY	Gna	1	0	1	0	2
MCWILLIAM	JOHN B F MCWILLIAMS	Gna	5	0	5	0	10
MEADSSP	STEPHEN P MEADS	Gna	0	1	0	0	1
MEDLICOTT	DAVID SAMUEL MEDLICOTT	Gna	0	1	0	0	1
MEDLICOTT	JOHN MEDLICOTT	Gna	0	1	0	0	1
MEESG	GERARD MEES	Gna	1	0	0	0	1
MEIKLEJ	JOANNE MEIKLE	Gna	0	1	0	0	1
MELLORGP	GEORGE P MELLOR	Gna	1	0	1	0	2
MELVILLEG	GARTH O MELVILLE	Gna	0	1	0	0	1
MELVILLET	T J MELVILLE	Gna	1	0	0	0	1
MENCIKFA	F A MENCİK	Gna	5	0	5	0	10
MERCERJE	JAMES E MERCER	Gna	5	0	0	0	5
MEREDITHP	PETER MEREDITH	Gna	0	1	0	0	1
MERRETTB	BRUCE G MERRETT	Gna	15	0	13	0	28
MEXTEDBC	BRIAN C MEXTED	Gna	1	0	1	0	2
MEXTEDS	SUSAN HELEN MEXTED	GNA	1	0	1	0	2
MEYERLION	LIONEL H MEYER	Gna	0	1	0	0	1
MICHAELS	ANTHONY G MICHAELS	Gna	0	1	0	0	1
MIDDLETON	ANN MIDDLETON	Gna	0	0	1	0	1
MIDDLETON	JAMES MIDDLETON	Gna	0	0	1	0	1
MIDDLETON	PETER MIDDLETON	Gna	0	0	1	0	1
MILLERGD	GRAHAM D MILLER	Gna	2	0	2	0	4
MILLERRP	ROSS P MILLER	Gna	0	1	0	0	1
MILLSJW	JOHN W MILLS	Gna	1	0	1	0	2
MILLSWP	WENDY P MILLS	Gna	1	0	1	0	2
MILNEGR	GEOFFREY R MILNE	Gna	2	0	0	0	2
MILNEJE	JOAN E MILNE	Gna	2	0	2	0	4
MINCHERAR	ALAN R MINCHER	Gna	1	0	1	0	2
MINCHERDM	DOROTHY M MINCHER	Gna	1	0	1	0	2
MITCHBILT	MITCHBILT LIMITED	Gna	18	0	0	0	18
MITCHELLA	ALLAN G MITCHELL	Gna	1	0	1	0	2
MITCHELLA	ALLAN B MITCHELL	Gna	1	0	0	0	1
MITCHELLA	ANTHONY B MITCHELL	Gna	1	0	0	0	1
MITCHELLP	PAUL W MITCHELL	Gna	1	0	0	0	1
MITTONJ	JACK MITTON	Gna	1	0	0	0	1
MOELLERP	PETER MOELLER	Gna	0	1	0	0	1
MOLLGAARD	ELAINE G L MOLLGAARD	Gna	2	0	2	0	4
MOLLOYEJ	MRS ELIZABETH J MOLLOY	Gna	1	0	1	0	2
MOOREDMD	MR D M MOORE	Gna	1	0	1	0	2
MOOREDMD	DEBORAH M MOORE	Gna	1	0	1	0	2
MOOREGE	GEORGINA L MOORE	Gna	1	0	0	0	1
MOOREGM	GEORGE M MOORE	Gna	4	0	4	0	8
MOOREGS	GRAHAM S MOORE	Gna	1	0	1	0	2
MOOREGW	GRAEME W MOORE	Gna	0	1	0	0	1
MOOREJE	JANET E MOORE	Gna	1	0	1	0	2
MOOREJL	JANE L MOORE	Gna	1	0	0	0	1
MOOREPB	PATRICIA B MOORE	Gna	0	2	0	0	2
MOORERD	R D MOORE	Gna	1	0	0	0	1
MORELMR	MICHAEL RICHARD MOREL	Gna	0	0	1	0	1
MORGANAG	ALAN G MORGAN	GNA	0	1	0	0	1
MORGANBH	BETTY H MORGAN	Gna	1	0	1	0	2
MORGANIJ	IRA J MORGAN	Gna	0	1	0	0	1
MORGANJH	JAMES H MORGAN	Gna	1	0	1	0	2
MORGANWG	WAYNE G MORGAN	Gna	0	1	0	0	1
MORLEYSR	SIMON R MORLEY	Gna	1	0	1	0	2
MORPETHMC	MARY C MORPETH	Gna	1	0	1	0	2
MORPETHRC	RICHARD C MORPETH	GNA	2	0	2	0	4
MORRELLAE	AMBROSE E MORRELL	Gna	1	0	0	0	1
MORRELLGP	GARRY P MORRELL	Gna	0	1	0	0	1
MORRINWHC	WILLIAM H C MORRIN	Gna	10	0	10	0	20
MORRISJ	JOHN MORRIS	Gna	0	2	0	0	2
MORRISK	THE ESTATE OF KATHLEEN MORRIS	Gna	1	0	1	0	2
MORRISM	MAY MORRIS	Gna	2	0	0	0	2
MORRISONA	ARTHUR E MORRISON	Gna	5	0	0	0	5
MORRISONT	TESSA MORRISON	Gna	0	5	0	0	5
MORRISPL	PHILLIP L MORRIS	Gna	1	0	1	0	2
MORRISPP	PETER P W MORRIS	Gna	1	0	1	0	2
MORRISRB	RICHARD B MORRIS	Gna	1	0	1	0	2
MORTOCR	CHRISTOPHER R MORTON	Gna	0	4	0	0	4

MORTONBRO	DAVID MORTON-BROWN	Gna	0	1	0	0	1
MORTONLC	LEWIS C MORTON	Gna	3	1	3	0	7
MOSAEDA	A MOSAED	Gna	0	1	0	0	1
MOSAEDCHR	CHRISTOPHER MOSAED	Gna	0	0	1	0	1
MOSAEDT	TONY MOSAED	Gna	0	1	0	0	1
MOSLEYG	GRENVILLE MOSLEY	Gna	1	0	0	0	1
MOSSBG	BRIAN G MOSS	Gna	0	1	0	0	1
MOSSET	EDWIN T MOSS	Gna	1	0	0	0	1
MOSSPG	PHYLLIS G MOSS	Gna	1	0	1	0	2
MOUATA	ALLYN MURRAY GARDINER MOUAT, HEATHER MARGARET MOUA	Gna	5	0	5	0	10
MOWTELLKJ	KELVIN J MOWTELL	Gna	1	0	1	0	2
MUIRKARL	KARL L MUIR	Gna	1	0	1	0	2
MUIRTH	THOMAS H MUIR	Gna	1	0	0	0	1
MULLERPG	PETER G MULLER	Gna	3	0	3	0	6
MULLIONS	DAVID C & MARTIN MULLIONS,JOY C SAVAGE	Gna	1	0	1	0	2
MUNROJSB	JAMES S B MUNRO	Gna	2	0	0	0	2
MURDOCHDL	DULCIE L MURDOCH	Gna	1	0	1	0	2
MURIERC	R C MURIE	Gna	1	0	1	0	2
MURPHYBE	BRIAN E MURPHY	Gna	1	0	1	0	2
MURPHYGJ	GRAHAM J MURPHY	Gna	0	1	0	0	1
MURPHYIA	ISOBEL A MURPHY	Gna	1	0	0	0	1
MURPHYJD	JOHN D MURPHY	Gna	1	0	1	0	2
MURPHYMG	MARGERY G MURPHY	Gna	1	0	1	0	2
MURPHYRJ	ROBERT J MURPHY	Gna	0	1	0	0	1
MURRAYM	MARGARET MURRAY	Gna	1	0	1	0	2
MUSCHAMPB	B MUSCHAMP	Gna	1	0	1	0	2
MUSCHAMPJ	J M MUSCHAMP	Gna	1	0	1	0	2
MYERSVR	VIRGINIA R MYERS	GNA	0	1	0	0	1
NATHANJL	JENIFER L NATHAN	Gna	1	0	0	0	1
NAYLORBR	BRUCE R NAYLOR	GNA	1	0	1	0	2
NEALAD	ALLAN D NEAL	Gna	0	1	0	0	1
NEALONJP	JOCELYN P NEALON	Gna	0	0	5	0	5
NELSONAL	ALLEN L NELSON	Gna	1	0	1	0	2
NELSONID	IAN D NELSON	Gna	2	0	2	0	4
NESBITTAN	ANNABEL NESBITT	GNA	1	0	0	0	1
NEVILLES	SUSAN NEVILLE	Gna	0	1	0	0	1
NEVINSBL	B L NEVINS	Gna	1	0	1	0	2
NEVINSPL	PETER L NEVINS	Gna	0	1	0	0	1
NEWBEGINO	OLIVER JOHN NEWBEGIN	GNA	0	1	0	0	1
NEWELLJWA	JACK W A & LEITH LNEWELL	Gna	1	0	1	0	2
NEWLINGPAM	PAM NEWLING	Gna	1	0	0	0	1
NEWTONIS	IAN NEWTON	Gna	0	1	0	0	1
NICOLWS	WALTER S NICOL	GNA	5	0	0	0	5
NIGHYAC	ANN C NIGHY	Gna	1	0	1	0	2
NIVENRB	RUTH B NIVEN	Gna	1	0	0	0	1
NOLANER	EILEEN R NOLAN	Gna	1	0	1	0	2
NOONANRJ	R J NOONAN	Gna	1	0	1	0	2
NORTHCH	CHRISTINE J NORTH	Gna	1	0	0	0	1
NORWOODCJ	CHARLES J B NORWOOD	Gna	1	0	0	0	1
NORWOODNW	NEVILLE W NORWOOD	Gna	1	0	1	0	2
NOVAKPH	PETER H NOVAK	Gna	0	1	0	0	1
NOVAKPK	PHILIPPA K NOVAK	Gna	0	1	0	0	1
NOVAKSG	STEPHEN G NOVAK	Gna	0	1	0	0	1
NOVENTAV	VICTOR NOVENTA	Gna	1	0	0	0	1
OAKDENJW	JOHN W OAKDEN	Gna	2	0	2	0	4
OBRIENK	KATHERINE OBRIEN	Gna	1	0	0	0	1
ODLINJM	MR J M ODLIN	Gna	2	0	0	0	2
OFEETCC	THOMAS C C OFEE	Gna	1	0	1	0	2
OFLYNNKN	KATHLEEN N OFLYNN	Gna	0	1	0	0	1
OGILVIEC	COLLEEN OGILVIE	Gna	0	1	0	0	1
OGILVIERG	ROBERT G OGILVIE	Gna	0	1	0	0	1
OGLEPA	P A OGLE	Gna	0	0	1	0	1
OHMEISWM	WYONNE M OHMEIS	Gna	1	0	1	0	2
OLIVERHC	HELEN C OLIVER	Gna	1	0	0	0	1
ONEILLKJ	KERRY J ONEILL	Gna	0	0	1	0	1
ONEILLNP	ESTATE OF NEAL PATRICK ONEILL	Gna	1	0	1	0	2
ONEILLSE	SHONA E ONEILL	Gna	1	0	1	0	2
OREGANEN	EDWARD N OREGAN	Gna	0	1	0	0	1
ORNBERGEC	ERIC C ORNBERG	Gna	3	0	0	0	3
ORRJ	JOY ORR	Gna	0	0	1	0	1
ORRWJ	WALTER J ORR	Gna	0	0	1	0	1
OSBORNEJS	MR J S OSBORNE	Gna	3	0	4	0	7
OSBOURNED	DEBORAH E OSBOURNE	Gna	0	1	0	0	1
OSHEABE	BERNARD E OSHEA	Gna	1	0	0	0	1
OVERTONEJ	ESME J OVERTON	Gna	7	0	7	0	14

RAL Missing Shareholders - 18th July 2019

PACKAK	ALAN K PACK	Gna	1	0	0	0	1
PAGEML	MILTON L PAGE	Gna	0	1	0	0	1
PAINEB	BERYL PAINE	Gna	1	0	0	0	1
PAINECJ	CECIL J PAINE	Gna	1	0	0	0	1
PAINECR	CECIL R PAINE	GNA	1	0	0	0	1
PAINEJM	JENNY M PAINE	Gna	0	0	1	0	1
PAINEPS	PHILLIPS S PAINE	Gna	0	0	1	0	1
PAINESG	SALLY G PAINE	Gna	1	0	0	0	1
PAINEWA	WARREN A PAINE	Gna	0	1	0	0	1
PALLISERG	GUY C PALLISER	Gna	1	0	1	0	2
PALMERMA	MARJORIE A PALMER	Gna	2	0	2	0	4
PALMERRW	ROBERT W PALMER	Gna	3	0	0	0	3
PAPEJR	JOCELYN R PAPE	GNA	1	0	0	0	1
PARDONCJ	THE ESTATE OF CHRIS J PARDON	GNA	0	2	0	0	2
PARKERAL	ANTHONY L PARKER	Gna	1	0	0	0	1
PARKERDW	DESMOND W PARKER	Gna	1	0	1	0	2
PARKERRF	ROSALIE F PARKER	Gna	1	0	0	0	1
PARKINER	ELAINE R PARKIN	Gna	1	0	1	0	2
PARKINHD	HELEN D PARKIN	Gna	1	0	1	0	2
PARKINJM	JOY M PARKIN	Gna	1	0	1	0	2
PARKINLJ	LLOYD J PARKIN	Gna	1	0	1	0	2
PARKINSJ	JASON PARKINS	Gna	1	0	1	0	2
PARKJC	JOHN C PARK	Gna	0	1	0	0	1
PAROREEJ	EILEEN J PARORE	Gna	0	0	1	0	1
PAROREM	MANAAKI PARORE	Gna	0	0	1	0	1
PARORET	TOM PARORE	Gna	0	0	1	0	1
PARRE	ERIC PARR	Gna	1	0	0	0	1
PARREBW	E B WYNN PARR	Gna	1	0	0	0	1
PARSONSK	KERRY PARSONS	Gna	0	1	0	0	1
PARTRIDGE	GARTH RICHARD PARTRIDGE	GNA	1	0	1	0	2
PASALICHH	THE ESTATE OF HELEN P PASALICH	Gna	0	1	0	0	1
PASLEYFN	THE ESTATE OF FELICITY N PASLEY	Gna	1	0	1	0	2
PASLEYPG	THE ESTATE OF PHILIP G PASLEY	Gna	2	0	2	0	4
PATERSONJJ	JEREMY J PATERSON	Gna	0	0	1	0	1
PATERSONK	KATHLEEN I PATERSON MILLWARD	GNA	1	0	1	0	2
PATTENAC	ALFRED C PATTEN	Gna	1	0	1	0	2
PATTENPD	PEARL D PATTEN	Gna	1	0	1	0	2
PATTERSON	WILLIAM M PATTERSON	Gna	7	0	9	0	16
PATTERSON	COLLEEN D PATTERSON	Gna	0	0	1	0	1
PATTERSON	ANNETTE PATTERSON	Gna	0	1	0	0	1
PATTERSONRT	ROGER T C PATTERSON	Gna	0	0	1	0	1
PATTINSON	DAVID P PATTINSON	Gna	0	1	0	0	1
PATTINSON	JOHN G PATTINSON	Gna	0	1	0	0	1
PAYNEGJ	GEOFFREY J PAYNE	Gna	0	1	0	0	1
PAYNEJM	J M PAYNE	Gna	0	1	0	0	1
PAYNEL	LESLIE PAYNE	Gna	0	1	0	0	1
PAYNESA	SHELLEY A PAYNE	Gna	1	0	1	0	2
PEACHMANW	WILLIAM D PEACHMAN DAVID J PEACHMAN	Gna	0	0	4	0	4
PEACOCKES	S M PEACOCKE	Gna	0	1	0	0	1
PEARCEPJ	PRUDENCE J PEARCE	Gna	0	1	0	0	1
PEARCEPW	PETER W PEARCE	Gna	1	0	0	0	1
PEARSONM	MARGARET M PEARSON	Gna	0	0	1	0	1
PENHALEHR	THE ESTATE OF HUGH R PENHALE	Gna	2	0	2	0	4
PENNINGTO	STANLEY R PENNINGTON	Gna	0	0	1	0	1
PERCY	PERCY BROTHERS	Gna	1	0	1	0	2
PERRINPJ	PAUL J PERRIN	Gna	5	0	5	0	10
PERRYBR	BRIAN R PERRY	Gna	2	0	0	0	2
PERRYR	RICHARD PERRY	Gna	2	0	0	0	2
PERRYWAC	WILLIAM A C PERRY	Gna	6	0	6	0	12
PETRIEW	WARREN PETRIE	Gna	1	0	0	0	1
PETTITBA	BETTY A PETTIT	Gna	5	0	5	0	10
PETTITHS	HARRY S PETTIT	Gna	5	0	5	0	10
PFAHLERTMAE	MAE PFAHLERT	GNA	0	0	5	0	5
PHARAZYNB	BELLINDA PHARAZYN	Gna	0	1	0	0	1
PHARAZYNP	PATRICIA M PHARAZYN	Gna	0	1	0	0	1
PHARAZYNP	PETER PETERS GODFREY PHARAZYN	Gna	0	1	0	0	1
PHAROCH	CHRISTOPHER H PHARO	Gna	0	1	0	0	1
PHARORH	RODNEY H PHARO	Gna	0	1	0	0	1
PHILLIPSD	DOUGLAS M PHILLIPS	Gna	6	0	6	0	12
PHILLIPSQF	QUENTIN F PHILLIPS	Gna	1	0	0	0	1
PHILPOTTA	A A D PHILPOTT	Gna	0	1	0	0	1
PICKERING	TONY G PICKERING	Gna	1	0	0	0	1
PICKWORTH	BRIAN PICKWORTH	Gna	0	0	1	0	1
PICKWORTH	JOHN A PICKWORTH	Gna	0	0	1	0	1
PIECHIJ	JOHANN PIECHI	Gna	1	0	0	0	1

PIERCEDP	DAVID P PIERCE	Gna	1	0	0	0	1
PIERCERM	RUTH M PIERCE	Gna	1	0	1	0	2
PIERCERW	ROBERT W PIERCE	Gna	0	1	0	0	1
PIKEBM	BRIGID M PIKE	Gna	0	1	0	0	1
PIKEE	ELIZABETH PIKE	Gna	1	0	0	0	1
PIKEMA	MOYA A PIKE	Gna	0	1	0	0	1
PIRIEEM	ERIC M PIRIE	Gna	1	0	0	0	1
PIRRITBR	THE ESTATE OF BARWICK R PIRIT	Gna	4	0	4	0	8
PITTARK	KATHERINE PITTAR	Gna	21	0	1	0	22
PLATTSAM	AUDREY M PLATTS	Gna	2	0	2	0	4
PLATTSFC	FREDERICK C PLATTS	Gna	1	0	1	0	2
PLAYNEFCN	FITZARTHUR C N PLAYNE	Gna	10	0	10	0	20
PLIMMERM	MAURICE PLIMMER	Gna	1	0	1	0	2
PLUMMERJL	JOHN L PLUMMER	Gna	0	1	0	0	1
POLERL	RAYMOND L POLE	Gna	1	0	0	0	1
POLLARDCW	CARLTON W POLLARD	Gna	4	0	4	0	8
POLLOCKF	FRED POLLOCK	Gna	0	1	0	0	1
POOLEJK	JOANNA K POOLE	GNA	2	0	3	0	5
POPEJ	J POPE	Gna	1	0	1	0	2
PORTEOUSM	MICHELLE A PORTEOUS	GNA	1	0	1	0	2
PORTEOUSM	MARIE E PORTEOUS	gna	1	0	1	0	2
PORTEOUSM	MARK H PORTEOUS	Gna	0	0	1	0	1
PORTEOUSP	PROUDENCE A PORTEOUS	Gna	0	1	0	0	1
PORTEOUSW	WILLIAM R PORTEOUS	GNA	1	0	1	0	2
POSSEGGERM	MARK POSSEGGER	GNA	0	0	1	0	1
POTOID	DAMAS POTOI	Gna	0	3	2	0	5
POTTERAR	ADAIR R POTTER	Gna	1	0	1	0	2
POTTERBE	B E POTTER	Gna	0	1	0	0	1
POTTERGE	GRAHAM E POTTER	Gna	1	0	1	0	2
POTTERIF	ISOBEL F POTTER	Gna	1	0	1	0	2
POTTONC	C POTTON	Gna	0	1	0	0	1
POTTONR	RHODA H POTTON	Gna	0	1	0	0	1
POTTONRH	RICHARD H POTTON	Gna	0	1	0	0	1
POTTONRJ	RICHARD J POTTON	Gna	0	1	0	0	1
POULTONJ	J POULTON	Gna	1	0	0	0	1
POULTONLG	L G POULTON	Gna	2	0	0	0	2
POWELLIJ	THE ESTATE OF IAN L J POWELL	Gna	1	0	0	0	1
POWERG	GERALD POWER	Gna	2	0	0	0	2
POWIERZAL	LECH POWIERZA	Gna	1	0	1	0	2
POYNTERW	WILBUR POYNTER	Gna	1	0	1	0	2
PRATTAY	ADRIENNE Y PRATT	Gna	0	1	0	0	1
PRESTONFC	FELIX C PRESTON	Gna	1	0	0	0	1
PRICENM	NANCY M PRICE	Gna	4	0	4	0	8
PRIESTJF	H J PRIEST	Gna	1	0	0	0	1
PRIORIE	IONE E PRIOR	Gna	0	2	0	0	2
PRIORSJ	SUSAN J PRIOR	Gna	6	0	0	0	6
PROWSELE	LINDA E PROWSE	Gna	1	0	1	0	2
PRYCEWI	W I PRYCE J G PRYCE	Gna	1	0	1	0	2
PULHAMGR	GEOFFREY ROY PULHAM	Gna	1	0	1	0	2
PULLARGM	GILLIAN M PULLAR	Gna	1	0	0	0	1
PURDIEL	LLOYD PURDIE	Gna	0	1	0	0	1
QUINNLM	LESLEY M QUINN	Gna	1	0	0	0	1
RADFORDJE	JANE E RADFORD	Gna	1	0	1	0	2
RADFORDRI	ROBYN I RADFORD	Gna	1	0	1	0	2
RADFORDS	SUSAN RADFORD	Gna	1	0	1	0	2
RADLEYJK	JOHN K RADLEY	Gna	1	0	0	0	1
RADLEYMA	MICHAEL A RADLEY	Gna	1	0	0	0	1
RAINEJWE	JOHN W E RAINE	Gna	1	2	1	0	4
RAITTLR	LANCE R RAITT	Gna	1	0	1	0	2
RANDELLH	MISS HUIA RANDELL	Gna	10	0	10	0	20
RATTRAYAC	ALLAN C RATTRAY	Gna	1	1	1	0	3
READDJ	DAVID J READ	Gna	1	0	0	0	1
READPJ	PHILIP J READ	Gna	1	0	1	0	2
RECORDONJ	JAMES D RECORDON	Gna	0	3	0	0	3
REDFERNG	GAVIN B REDFERN	Gna	0	1	0	0	1
REDNYNEWG	WILFRID G REDNYNE	Gna	0	1	0	0	1
REDSHAWJF	JOYCE F J REDSHAW	Gna	1	0	0	0	1
REEDDE	DOREEN D REED	Gna	0	1	0	0	1
REEDJM	JOHN M REED	Gna	0	1	0	0	1
REEKIED	DOUGAL DAVID BALFOUR REEKIE	Gna	1	0	1	0	2
REEKIEP	PENELOPE GAY ALLEN REEKIE	Gna	1	0	1	0	2
REEKIER	ROSEMARY GAY REEKIE	Gna	1	0	1	0	2
REESGE	GWYN E REES	Gna	1	1	1	0	3
REESJONES	GLYN W REES-JONES	Gna	4	0	0	0	4
REESMJG	MICHAEL J G REES	Gna	1	0	1	0	2

REIDAJ	ANDREW JAMES REID	Gna	2	0	0	0	2
REIDAJ	ANDREW JAMES REID	Gna	1	0	0	0	1
REIDLA	LAWRENCE A REID	Gna	0	1	0	0	1
REIDM	MAURINE REID	Gna	1	0	1	0	2
REIDRH	RICHARD HENRY REID	Gna	9	0	0	0	9
REIDRP	ROBERT P REID	Gna	4	0	4	0	8
REIDVM	VIOLET M REID	Gna	0	1	0	0	1
RENDELLDC	DAVID C RENDELL	Gna	2	0	2	0	4
RENDELLSC	STEPHEN C RENDELL	Gna	3	0	0	0	3
RENOUFFH	THE ESTATE OF FRANCIS H RENOUF	Gna	18	0	18	0	36
REYNOLDSJ	JENNIFER M REYNOLDS	Gna	0	1	0	0	1
REYNOLDSM	MARY V REYNOLDS	Gna	1	0	1	0	2
REYNOLDST	TREVOR R REYNOLDS	GNA	0	1	0	0	1
REYNOLDSW	WILLIAM M REYNOLDS	Gna	8	0	0	0	8
RHINDJE	JAMES E RHIND	Gna	1	0	1	0	2
RHODESJS	JONATHON S RHODES	Gna	0	1	0	0	1
RIANES	E S RIAN	Gna	1	0	0	0	1
RICHARDC	CAROLINE LOUISE RICHARDSON	Gna	0	0	1	0	1
RICHARDJ	JANE NANCY RICHARDSON	Gna	0	0	1	0	1
RICHARDJ	JOANNE MAREE RICHARDSON	Gna	0	0	1	0	1
RICHARDS	STEPHEN PAUL RICHARDSON	Gna	0	0	1	0	1
RICHARDSA	THE ESTATE OF ARTHUR E RICHARDS	Gna	1	0	2	0	3
RICHARDSB	BRUCE W T RICHARDS	Gna	1	0	0	0	1
RICHARDSF	FAYE P RICHARDS	Gna	1	0	2	0	3
RICHARDSG	GORDON R RICHARDS	Gna	1	0	1	0	2
RICHARDSO	JOHN O RICHARDSON	Gna	0	0	1	0	1
RICKMANOP	O P RICKMAN	Gna	0	1	0	0	1
RIDDETFM	FIONA M RIDDET	Gna	0	1	0	0	1
RIDDIFORD	RICHARD D RIDDIFORD	Gna	1	0	1	0	2
RIDDIFORDJH	JOLYON HENRY EDWARD RIDDIFORD	Gna	1	0	0	0	1
RIDDIFORDJJ	JESSICA JANE RIDDIFORD	GNA	1	0	0	0	1
RIDDIFORDLS	LYDIA SOPHIE RIDDIFORD	GNA	1	0	0	0	1
RIDDIFORDMO	MAGNUS OLIVER JOHN RIDDIFORD	Gna	1	0	0	0	1
RIESERML	MICHAEL L RIESER	Gna	2	0	1	0	3
RIGGSY	SHARMAN Y RIGG	Gna	1	0	0	0	1
RINGERJ	JAN RINGER	Gna	2	0	0	0	2
RINGERL	LINDA RINGER	Gna	2	0	0	0	2
RITCHIEAJ	ANJA J M RITCHIE	Gna	0	0	1	0	1
RITCHIEDJ	DAVID J RITCHIE	Gna	1	0	0	0	1
RITCHIEJA	JUNE AGNES RITCHIE	GNA	1	0	1	0	2
RITCHIEMD	MARCUS D RITCHIE	Gna	0	0	1	0	1
RIVERSVM	THE ESTATE OF VALERIE M RIVERS	Gna	1	0	1	0	2
ROBERTSGC	GORDON C ROBERTS	Gna	2	1	0	0	3
ROBERTSJF	JOHN F ROBERTS	Gna	1	0	0	0	1
ROBERTSO	OWEN J ROBERTS	Gna	0	1	0	0	1
ROBERTSON	SIMON R ROBERTSON	Gna	3	0	0	0	3
ROBERTSON	ALEXANDER J ROBERTSON	Gna	2	0	0	0	2
ROBERTSON	DONALD H ROBERTSON	Gna	2	0	0	0	2
ROBERTSON	JOHN J ROBERTSON	Gna	1	0	1	0	2
ROBERTSON	BRUCE ROBERTSON	Gna	1	0	0	0	1
ROBERTSONJ	JANET ROBERTSON	Gna	0	0	1	0	1
ROBINSEG	ELLIS G ROBINS	Gna	5	0	0	0	5
ROBINSONB	THE ESTATE OF BRYAN W ROBINSON	Gna	6	0	6	0	12
ROBINSONB	BRUCE J ROBINSON	Gna	1	0	0	0	1
ROBINSONS	SHIRLEY V ROBINSON	Gna	2	0	0	0	2
ROBLINJM	JANET M ROBLIN	Gna	1	0	1	0	2
ROBSONAB	ALEXANDER B ROBSON	Gna	1	0	1	0	2
ROBSONSM	SYVIA M ROBSON	Gna	1	0	1	0	2
RODGERDW	DONALD W RODGER	Gna	1	0	0	0	1
RODGERSJM	JOCELYN M RODGERS	Gna	1	0	0	0	1
RODGERSN	NEVILLE G RODGERS	GNA	0	0	6	0	6
ROLLESTON	Estate of Marion I Rolleston	Gna	3	0	3	0	6
ROSEMM	MANA M ROSE	Gna	1	0	0	0	1
ROSSBG	BRUCE G K ROSS	Gna	0	1	0	0	1
ROSSFD	FLORENCE D ROSS	Gna	0	1	0	0	1
ROSSGM	GILMER M ROSS	Gna	2	0	2	0	4
ROSSIAH	IAN A H ROSS	Gna	1	0	1	0	2
ROSSJC	JONATHAN C ROSS	Gna	0	1	0	0	1
ROSSJH	JOHN H ROSS	Gna	1	0	1	0	2
ROSSL	LOUISE ROSS	Gna	0	1	0	0	1
ROTHERHAM	BARBARA A ROTHERHAM	GNA	1	0	0	0	1
ROUNTREEB	BADEN ROUNTREE	Gna	1	0	1	0	2
ROWANEM	ERNST M ROWAN	Gna	0	1	0	0	1
ROWANSN	STUART N ROWAN	Gna	0	1	0	0	1
ROWECT	THE ESTATE OF CECIL T ROWE	Gna	1	0	0	0	1

ROWED	DONALD J ROWE & JMCLENNAN	Gna	0	0	1	0	1
ROWED	DIANA CAROLINE ROWE	Gna	1	0	0	0	1
ROWEDE	DAVID E ROWE	Gna	1	0	1	0	2
ROWEGR	GREGORY R ROWE	Gna	1	0	1	0	2
ROWEIA	IRENE A ROWE	Gna	5	0	0	0	5
ROYALCGT	CASEY G T ROYAL	Gna	0	0	1	0	1
RUSCOETA	THE ESTATE OF TYRELL A RUSCOE	GNA	1	0	1	0	2
RUSSELLGB	GEORGE B RUSSELL	Gna	1	0	1	0	2
RUSSELLMA	MARK A C RUSSELL	Gna	1	0	0	0	1
RUSSELLMH	MICHAEL H G RUSSELL	Gna	1	0	0	0	1
RUSSELLNF	NORMA F RUSSELL	Gna	1	0	1	0	2
RUTHERFOR	ALEXANDER M RUTHERFORD	Gna	2	0	2	0	4
RUTHERFOR	A J RUTHERFURD	Gna	1	0	0	0	1
RUTHERFOR	NOEL M RUTHERFORD	Gna	0	1	0	0	1
RUTHERFURGK	GRAEME K RUTHERFURD	Gna	0	1	0	0	1
RYANRHW	ROBERT H W RYAN	Gna	0	1	0	0	1
SADDER	E R SADD	Gna	0	1	0	0	1
SAINSBURY	MARGARET E SAINSBURY	Gna	2	0	2	0	4
SAINSBURY	DAVID SAINSBURY	Gna	0	0	1	0	1
SALEKDH	DANIEL H SALEK	GNA	3	0	4	0	7
SALEKJE	JANET E SALEK	GNA	2	0	0	0	2
SALEKRL	REBECCA L ALFORD	GNA	3	0	3	0	6
SALISBURY	JOHN N SALISBURY	Gna	2	0	0	0	2
SALMONAV	THE ESTATE OF ALEXANDER V SALMON	Gna	1	0	1	0	2
SANDELIN	MICHAEL ARNE SANDELIN	GNA	0	1	0	0	1
SANSONCA	CRAIG A SANSON	Gna	0	0	1	0	1
SANSONRA	REGINALD A SANSON	Gna	1	1	1	0	3
SARGINSON	ROBYN SARGINSON	Gna	1	0	0	0	1
SAUNDERSA	ALAN F SAUNDERS	Gna	10	0	10	0	20
SAUNDERSB	BARBARA SAUNDERS	Gna	0	1	0	0	1
SAUNDERSC	CHRISTINE SAUNDERS	Gna	0	1	0	0	1
SAUNDERSJ	JOHN H SAUNDERS	Gna	1	0	1	0	2
SAUNDERSN	NANCY M SAUNDERS	Gna	2	0	2	0	4
SAVORY	PAUL CHARLES SAVORY	Gna	10	0	0	0	10
SAWYERDA	DEBORAH A SAWYER	Gna	0	1	0	0	1
SAWYERDT	DANIEL T SAWYER	Gna	1	0	1	0	2
SAWYERJB	JOHN B SAWYER	Gna	1	0	0	0	1
SAYERGA	GRACE A SAYER	Gna	1	0	1	0	2
SAYERHW	HAROLD W SAYER	Gna	1	0	1	0	2
SCANNELLM	MICHEAL F SCANNELL	Gna	0	0	1	0	1
SCELTONSM	MRS S M SCELTON	Gna	1	0	1	0	2
SCHLATTER	HERMAN SCHLATTER	Gna	10	0	0	0	10
SCHNEIDEM	MICHAEL A SCHNEIDEMAN	Gna	1	0	0	0	1
SCHNEIDEM	TESSA A SCHNEIDEMAN	Gna	1	0	0	0	1
SCHOFIELD	L SCHOFIELD	Gna	1	0	0	0	1
SCHUSTERG	GERHARD O SCHUSTER	Gna	0	1	0	0	1
SCHWASSR	ROBIN SCHWASS	GNA	0	0	1	0	1
SCHWASSV	VAUGHAN SCHWASS	GNA	0	0	1	0	1
SCOFIELDE	ELISABETH A SCOFIELD	Gna	0	1	0	0	1
SCOFIELDS	S SCOFIELD	Gna	0	1	0	0	1
SCOTNEYER	ELLEN R SCOTNEY	Gna	7	0	7	0	14
SCOTTJEE	JANIE ELIZABETH ELLEN SCOTT	Gna	1	0	1	0	2
SCOTTJH	JAMES H SCOTT	Gna	2	0	2	0	4
SCOTTLA	LYNETT A SCOTT	Gna	1	0	0	0	1
SCOTTSD	STUART D SCOTT	Gna	1	0	1	0	2
SEABROOKJ	JOHN C SEABROOK	Gna	2	0	2	0	4
SEALENACL	NICOLA ANN SEALE	GNA	1	0	0	0	1
SERVICEJ	JOCELYN SERVICE	Gna	0	1	0	0	1
SHANAHANH	HELEN N SHANAHAN	Gna	0	0	1	0	1
SHANAHANJ	JANE E SHANAHAN	Gna	0	0	1	0	1
SHANDJ	JANE SHAND	Gna	0	0	2	0	2
SHANDJB	JAMES BRENNAN SHAND	Gna	0	0	1	0	1
SHANNONGB	G B SHANNON	Gna	1	0	0	0	1
SHAWBM	BELINDA M SHAW	Gna	1	0	1	0	2
SHAWCL	COLIN L SHAW	Gna	1	0	1	0	2
SHAWRA	RODNEY A SHAW	Gna	0	0	1	0	1
SHEARERMA	MICHAEL A SHEARER	Gna	0	0	1	0	1
SHEATHDM	DAVID M SHEATH	Gna	0	1	0	0	1
SHEATHJF	JOHN F SHEATH	Gna	0	1	0	0	1
SHENKINBK	BRIAN K SHENKIN	Gna	1	0	0	0	1
SHENKINV	VIVIEN E SHENKIN	Gna	0	1	0	0	1
SHEPHERDD	DOUGLAS SHEPHERD	Gna	2	0	2	0	4
SHERAS	SIMON SHERA	Gna	1	0	1	0	2
SHERWENJ	ESTATE JACK SHERWEN	Gna	10	0	0	0	10
SHIRERAA	ALISON A SHIRER	Gna	1	0	1	0	2

RAL Missing Shareholders - 18th July 2019

SHIRERWC	WILLIAM C SHIRER	Gna	1	0	1	0	2
SHORTTEH	ELIZABETH H SHORTT	Gna	2	0	0	0	2
SHOUTT	THOMAS SHOUT	Gna	1	0	0	0	1
SILVERRL	ROBIN L SILVER	Gna	0	1	0	0	1
SIMANKEG	GERHARD SIMANKE	Gna	0	1	0	0	1
SIMCOCKAG	ANDREW G SIMCOCK	Gna	0	1	0	0	1
SIMCOCKKR	KEITH R SIMCOCK	Gna	2	0	3	0	5
SIMMON P	PATRICK SIMMON	GNA	1	0	0	0	1
SIMMSAG	ALAN G SIMMS	Gna	2	0	0	0	2
SIMMSLB	LEILA B SIMMS	Gna	2	0	0	0	2
SIMPSONBA	BARBARA A SIMPSON	Gna	1	0	0	0	1
SIMPSONGA	GAVIN A SIMPSON	Gna	4	0	0	0	4
SIMPSONLH	LAURENCE H SIMPSON	Gna	5	0	5	0	10
SIMPSONNC	NEILL C SIMPSON	Gna	1	0	0	0	1
SINCLAIRJ	JOHN G SINCLAIR	Gna	1	1	0	0	2
SINCLAIRR	ROD SINCLAIR	Gna	1	0	0	0	1
SINCLAIRR	REX L SINCLAIR	Gna	0	1	0	0	1
SINCLAIRS	SUZANNE M SINCLAIR	Gna	1	0	0	0	1
SISAMMSM	MARK SISAM	GNA	1	0	1	0	2
SISAMP	PAUL SISAM	GNA	1	0	1	0	2
SKINNERC	C SKINNER	Gna	1	0	1	0	2
SLACKEP	ENID P SLACK	Gna	1	0	1	0	2
SLOANCWW	CHARLES W W SLOAN	Gna	5	0	0	0	5
SLYWL	WARREN L SLY	GNA	1	0	0	0	1
SMALLA	AMY JUNE SMALL	Gna	1	0	0	0	1
SMALLBON	JOHN R SMALLBONE	Gna	1	0	0	0	1
SMALLK	KATHERINE MARY SMALL	Gna	0	0	1	0	1
SMALLL	LOUISE CLAIRE SMALL	Gna	1	0	0	0	1
SMITH S	SADIE SMITH	Gna	1	0	0	0	1
SMITHAL	ANNE L SMITH	GNA	0	1	0	0	1
SMITHCB	CHARLES B SMITH	Gna	1	0	0	0	1
SMITHD	DOROTHY SMITH	Gna	1	0	6	0	7
SMITHF	FLORA SMITH	Gna	1	0	0	0	1
SMITHGC	GABRIELLE C SMITH	Gna	1	0	1	0	2
SMITHGW	GRAHAM W SMITH	Gna	0	1	0	0	1
SMITHHC	HOWARD C SMITH	Gna	1	0	1	0	2
SMITHHJ	HOWARD J SMITH	Gna	0	1	0	0	1
SMITHHM	HELEN M SMITH	Gna	0	1	0	0	1
SMITHJ	JAQUETTA SMITH	Gna	0	1	0	0	1
SMITHL	L SMITH	Gna	1	1	1	0	3
SMITHM	MAURICE SMITH	Gna	16	0	0	0	16
SMITHM	MIKE SMITH	Gna	0	0	5	0	5
SMITHP	PAUL SMITH	Gna	10	0	10	0	20
SMITHRD	RODGER D SMITH	Gna	0	1	0	0	1
SMITHRD	ROGER D SMITH	Gna	1	0	0	0	1
SMITHRW	MR RAYMOND W SMITH	Gna	1	0	1	0	2
SMITHW	W SMITH	Gna	1	0	0	0	1
SMITHWM	WILLIAM M SMITH	Gna	1	0	0	0	1
SNOWDENR	RAYMOND SHOWDEN	Gna	1	0	1	0	2
SNOWJHD	JOHN HASTINGS D'OYLY SNOW	Gna	4	0	4	0	8
SOMERVILL	DONALD N SOMERVILLE	Gna	4	0	4	0	8
SOMERVILL	IAN M SOMERVILLE	Gna	1	0	1	0	2
SOMERVILL	BRYAN W SOMERVILLE	Gna	0	1	0	0	1
SOUTERAD	ANDREW D SOUTER	Gna	0	0	1	0	1
SOUTERED	ELIZABETH D SOUTER	Gna	1	0	1	0	2
SOUTHWICK	DOUGLAS E SOUTHWICK	GNA	1	0	0	0	1
SOWNEYE	ELLWYN SOWNY	Gna	0	1	0	0	1
SPEEDYDT	DAVID T SPEEDY	Gna	1	0	1	0	2
SPEEDYPM	PHYLLIS M SPEEDY	Gna	1	0	0	0	1
SPEIGHTPA	PAUL A SPEIGHT	Gna	1	0	1	0	2
SPENCEBJ	BARBARA J SPENCE	Gna	1	0	1	0	2
SPENCEG	GRANT SPENCE	Gna	0	0	1	0	1
SPENCERRA	RICHARD A SPENCER	Gna	0	1	0	0	1
SPENCERRD	ROBERT D SPENCER	Gna	0	1	0	0	1
SPERRYRAN	SPERRY RAND NZ LIMITED	Gna	1	0	1	0	2
SPIERSIB	IAN BURNES SPIERS	Gna	0	1	0	0	1
SPITZERJ	JOSEPH SPITZER	Gna	2	0	2	0	4
STABLEFOR	B A H STABLEFORD	Gna	5	0	5	0	10
STAINESLJ	LENORE J STAINES	Gna	0	1	0	0	1
STAINESP	PETER STAINES	Gna	0	1	0	0	1
STANCLIFF	JOHN C STANCLIFFE	GNA	1	0	0	0	1
STANLEYAP	ALAN P STANLEY	Gna	0	1	0	0	1
STAVELEYJ	JOHN D STAVELEY	Gna	1	0	0	0	1
STEELECR	CHARLES R STEELE	Gna	1	0	1	0	2
STEELEJM	JENNIFER M STEELE	Gna	1	0	0	0	1

RAL Missing Shareholders - 18th July 2019

STEELEJM	JOHN M STEELE	Gna	0	1	0	0	1
STEELNM	NORMA M STEEL	GNA	0	1	0	0	1
STEPHENSO	WILLIAM G STEPHENSON	Gna	1	0	1	0	2
STEPHENSS	SIMON C STEPHENS	Gna	1	0	1	0	2
STEVENSON	GEORGE B STEVENSON	Gna	3	0	3	0	6
STEVENSON	TREVOR W STEVENSON	Gna	0	1	0	0	1
STEVENSRL	RACHEL LEIGH STEVENS	Gna	0	0	1	0	1
STEWARTAJ	ANNETTE J STEWART	Gna	2	0	5	0	7
STEWARTJ	JAMES STEWART	Gna	10	0	10	0	20
STEWARTJD	JOHN D STEWART	Gna	10	0	10	0	20
STIEGLBAU	THE ESTATE OF CURT T STIEGLBAUER	Gna	1	0	0	0	1
STJOHNIVE	JULIA A ST JOHN-IVES	Gna	1	0	1	0	2
STOCKBM	BRIAN M STOCK	Gna	1	0	0	0	1
STOCKCM	CATHERINE M STOCK	Gna	1	0	0	0	1
STOCKMJ	MICHAEL J STOCK	Gna	1	0	0	0	1
STOCKPD	PETER D STOCK	Gna	0	1	0	0	1
STOCKPW	PATRICK W STOCK	Gna	1	0	0	0	1
STOCKR	RICHARD STOCK	Gna	1	0	0	0	1
STODDARTP	PAUL J C STODDART	GNA	1	1	1	0	3
STOHRAM	ANNA M STOHR	Gna	1	0	0	0	1
STONELC	LEO C STONE	Gna	1	0	0	0	1
STONEV	VALERIE STONE	Gna	0	1	0	0	1
STOREYBB	THE ESTATE OF BRIAN B STOREY	Gna	0	2	0	0	2
STOREYJR	JOHN R STOREY	Gna	1	0	1	0	2
STOREYL	LIBBY STOREY	Gna	0	1	0	0	1
STOUTRE	ROBERT E STOUT	Gna	5	0	5	0	10
STRACHANR	ROBERT E STRACHAN	Gna	1	0	1	0	2
STRACKNJC	NOEL J C STRACK	Gna	5	0	0	0	5
STRATFORD	ANNE M STRATFORD	Gna	0	1	0	0	1
STRATTONH	HECTOR A STRATTON	Gna	0	1	0	0	1
STRIDGL	THE ESTATE OF GORDON L STRID	Gna	1	0	1	0	2
STRIDN	NEIL STRID	Gna	0	1	0	0	1
STRINGERA	ALEXANDER P STRINGER	Gna	0	1	0	0	1
STRONGSEA	SHELAGH E A STRONG	Gna	1	0	1	0	2
STROUDG	GRAHAM STROUD	Gna	0	1	0	0	1
STUCKEYFS	THE ESTATE OF FRANCIS S V STUCKEY	GNA	2	0	0	0	2
STURGESSG	GILBERT S STURGESS	Gna	1	0	0	0	1
STURGESSY	YVONNE STURGESS	Gna	1	0	1	0	2
STURTDN	DONALD N STURT	GNA	1	0	1	0	2
STURTEA	E A STURT	Gna	1	0	1	0	2
STURTHE	HUGO E STURT	Gna	1	0	1	0	2
SULLIVANE	MRS EILEEN M SULLIVAN	GNA	1	0	1	0	2
SUMICHLB	LEW B SUMICH	Gna	1	0	0	0	1
SUMICHML	M L SUMICH	Gna	1	0	0	0	1
SUNDSTRUM	BARNABY I SUNDSTRUM	Gna	1	0	1	0	2
SUTCLIFFE	RICHARD E SUTCLIFFE	Gna	2	0	0	0	2
SUTHERLAN	DONALD I SUTHERLAND	Gna	0	1	0	0	1
SUTHERLAN	KAYE SUTHERLAND	Gna	0	1	0	0	1
SUTHJ	JOHN JAMES SUTHERLAND	Gna	5	0	5	0	10
SWADLINGG	GLADYS I SWADLING	Gna	1	0	1	0	2
SWADLINGH	HARRY C SWADLING	Gna	1	0	1	0	2
SWANBL	THE ESTATE OF BRIAN L SWAN	Gna	5	0	0	0	5
SWANKD	KATHRYN D SWAN	Gna	1	0	5	0	6
SWANPI	THE ESTATE OF PATRICIA I SWAN	Gna	1	0	0	0	1
SWASBROOKGR	GRANT SWASBROOK	Gna	10	0	0	0	10
SWEETMAL	MARGARET A L SWEET	Gna	1	0	1	0	2
SWIFTAD	ANTHONY D SWIFT	GNA	1	0	0	0	1
SWINTONI	IAN D SWINTON	Gna	0	1	0	0	1
SYMEJW	JOHN W SYME	Gna	0	1	0	0	1
TABUTEAUM	ESTATE OF M V TABUTEAU	Gna	1	0	0	0	1
TAKEUCHIA	AKIKO TAKEUCHI	Gna	0	0	2	0	2
TAKEUCHIH	HIROMI TAKEUCHI	Gna	0	0	2	0	2
TALBOTGG	GRAEME G TALBOT	Gna	1	0	1	0	2
TANNERND	NANCY D TANNER	Gna	10	0	10	0	20
TAPLINGM	GWYNETH M MONCRIEFF	Gna	1	0	0	0	1
TAPPERBP	BRIAN P TAPPER	Gna	1	0	0	0	1
TASKERBF	BRIAN F TASKER	Gna	0	1	0	0	1
TASKERCB	CRAIG B TASKER	Gna	1	0	0	0	1
TASKERGC	GLEN C TASKER	Gna	1	0	0	0	1
TASKERGJ	GAVIN J TASKER	Gna	1	0	0	0	1
TASKERJM	JACQUELINE M TASKER	Gna	1	0	0	0	1
TAYLERPA	PETER A TAYLER	GNA	0	0	1	0	1
TAYLORA	ANNETTE TAYLOR	Gna	0	1	0	0	1
TAYLORAG	ESTATE ARTHUR G TAYLOR	Gna	10	0	10	0	20
TAYLORBE	BRIAN E TAYOR	Gna	0	1	0	0	1

TAYLORCR	CRAIG R TAYLOR	Gna	0	1	0	0	1
TAYLORDF	DIGBY F TAYLOR	Gna	1	0	1	0	2
TAYLORGF	GREGORY F TAYLOR	Gna	1	0	1	0	2
TAYLORGL	ESTATE GIDEON L TAYLOR	Gna	3	0	0	0	3
TAYLORHN	HEATHER N TAYLOR	Gna	1	0	1	0	2
TAYLORLF	LAWRENCE F TAYLOR	Gna	5	0	7	0	12
TAYLORMD	M D TAYLOR	Gna	0	1	0	0	1
TAYLORNL	NIGEL L TAYLOR	Gna	0	0	1	0	1
TAYLORRW	ROBERT W TAYLOR	Gna	2	0	0	0	2
TAYLORS	SUSAN TAYLOR	Gna	0	1	0	0	1
TAYLORVM	VICTORIA M TAYLOR	Gna	0	1	0	0	1
THATCHERD	DAVID N THATCHER	GNA	1	0	1	0	2
THEVENARD	THE ESTATE OF PETER G THEVENARD	Gna	0	2	0	0	2
THEVENARD	PETER J J THEVENARD	Gna	0	1	0	0	1
THEVENARDMG	THE ESTATE OF MARY G THEVENARD	Gna	0	1	0	0	1
THODEWA	W A THODE	Gna	0	1	0	0	1
THOMASAW	AUSTIN W THOMAS	Gna	2	0	0	0	2
THOMASBF	BARRY F THOMAS	Gna	0	1	0	0	1
THOMASCT	CHRISTOPHER T THOMAS	Gna	0	1	0	0	1
THOMASDT	DAVID T THOMAS	Gna	0	1	0	0	1
THOMASMJ	MARQUERITE J THOMAS	Gna	2	0	0	0	2
THOMASR	REBECCA THOMAS	Gna	0	1	0	0	1
THOMASRT	RICHARD T THOMAS	Gna	0	1	0	0	1
THOMASSLH	LEWIS H THOMASS	Gna	1	0	0	0	1
THOMASSP	PHILLIP L THOMASS	Gna	0	0	1	0	1
THOMPSONA	AUBREY P THOMPSON	Gna	0	0	1	0	1
THOMPSOND	DESMOND G THOMPSON	Gna	0	1	0	0	1
THOMPSONF	FRANK B THOMPSON	Gna	1	0	0	0	1
THOMPSONK	KATHY J THOMPSON	Gna	0	0	1	0	1
THOMPSONM	MARK B THOMPSON	Gna	5	0	5	0	10
THOMPSONN	NOEL E THOMPSON	Gna	0	0	1	0	1
THOMSONA	ALEXANDER THOMSON	Gna	0	1	0	0	1
THOMSONC	CAROLE THOMSON	Gna	1	0	0	0	1
THOMSONDN	DAVID H THOMSON	Gna	0	1	0	0	1
THOMSONED	E D S THOMSON	Gna	0	1	0	0	1
THOMSONH	JAMES HARVEY THOMSON	Gna	0	1	0	0	1
THOMSONJB	JOHN B THOMSON	Gna	0	1	0	0	1
THOMSONS	SCOT THOMSON	GNA	0	1	0	0	1
THORPEMB	MAURICE B THORPE	Gna	10	0	10	0	20
TILBURYAF	ANNIE F TILBURY	Gna	2	0	0	0	2
TILBURYH	LESLIE G TILBURY	Gna	6	0	0	0	6
TILLYPA	PATRICIA A TILLY	Gna	0	1	0	0	1
TILSONEE	E E TILSON	Gna	1	0	1	0	2
TILSONM	MARK J TILSON	Gna	0	1	0	0	1
TINGEYRR	ROBERT R TINGEY	Gna	0	1	0	0	1
TOCHK	KYLE TOCHER	GNA	2	0	2	0	4
TOCKERR	ROBERT TOCKER	GNA	0	1	0	0	1
TODDAN	ANDREW NOEL TODD	Gna	3	0	0	0	3
TODDIR	IAN R TODD	Gna	0	1	0	0	1
TODDKM	KATRINA M TODD	Gna	1	0	0	0	1
TOLLEMACH	NICOLA TOLLEMACHE	Gna	0	0	1	0	1
TOMLINSON	ESTATE OF MARGARET C N TOMLINSON	Gna	3	0	3	0	6
TOMLINSON	DIANA TOMLINSON	Gna	2	0	2	0	4
TOMPKINSA	ANNE C TOMPKINS AND SHIRLEY V ROBINSON BETY C JACK	Gna	1	0	0	0	1
TOMPKINSR	ROGER H TOMPKINS ARTHUR I M TOMPKINS	Gna	1	0	1	0	2
TONKINH	HEATHER S TONKIN	Gna	0	1	0	0	1
TONKINJC	THE ESTATE OF JOHN C TONKIN	Gna	0	1	0	0	1
TOPPINGBL	BARBARA L TOPPING	Gna	1	0	1	0	2
TOWNSENDER	BARRIE E TOWNSEND	Gna	0	1	0	0	1
TOWNSENDERM	MURRAY E TOWNSEND	Gna	0	1	0	0	1
TRAILLJ	JEREMY TRAILL	Gna	10	0	0	0	10
TRAPSKIR	RACHEL E TRAPSKI	GNA	0	0	1	0	1
TREADGOLD	PAUL K TREADGOLD	Gna	0	1	0	0	1
TREADGOLD	SUSAN MARY TREADGOLD	Gna	1	0	0	0	1
TREADWELL	THE ESTATE OF SHANE J TREADWELL	Gna	1	0	1	0	2
TREISTERA	ARNOLD S TREISTER	Gna	1	0	1	0	2
TRENWITHH	HELEN L TRENWITH	Gna	1	0	1	0	2
TRENWITHJ	JOHN A TRENWITH	Gna	1	0	1	0	2
TRIPERE	RICHARD E TRIPE	Gna	1	0	1	0	2
TRISTCR	C R TRIST NEE MASON	Gna	1	0	1	0	2
TROLOVETJ	TIMOTHY J TROLOVE	Gna	5	5	5	0	15
TROTTERCC	C C TROTTER	Gna	0	1	0	0	1
TROTTERCM	CHRISTINE M TROTTER	Gna	0	1	0	0	1
TROUPA	ANTHONY J TROUP	GNA	0	0	1	0	1
TRUBSHAWW	THE ESTATE OF WILLIAM J TRUBSHAW	Gna	1	0	1	0	2

RAL Missing Shareholders - 18th July 2019

TRUBUHOVI	ALLEN J TRUBUHOVICH	Gna	1	0	0	0	1
TRUEMANM	MARTY D TRUEMAN	Gna	0	0	1	0	1
TRUSCOTTL	LESLIE J TRUSCOTT	Gna	0	0	2	0	2
TUCKCM	CAROL M TUCK	Gna	0	1	0	0	1
TUCKJG	JOHN G TUCK	Gna	1	0	1	0	2
TUCKR	R TUCK	Gna	0	1	0	0	1
TURNERDJ	DAVID J TURNER	Gna	0	0	1	0	1
TURNERG	GLORIA A TURNER	Gna	0	1	0	0	1
TURNERV	V TURNER	Gna	0	1	0	0	1
TURNOVSKY	ESTATE OF FREDERICK TURNOVSKY	Gna	1	0	1	0	2
TYNDALLJ	JOSEPH TYNDALL	Gna	0	1	0	0	1
TYNDALLS	SUSAN TYNDALL	Gna	0	1	0	0	1
TYNDELM	MICHAEL TYNDEL	Gna	0	1	0	0	1
UPTONGT	GEOFFREY T UPTON	Gna	10	0	10	0	20
URQUHARTJ	JOHN C O URQUHART	Gna	0	1	0	0	1
URQUHARTJ	JUDE A URQUHART	Gna	0	1	0	0	1
URWINGK	MR GARY K URWIN	Gna	1	0	1	0	2
VALENTINE	EDWARD N VALENTINE	Gna	10	0	10	0	20
VALKDD	DELYSSE D VALK	Gna	0	1	0	0	1
VALLANCED	DECIMA E VALLANCE	Gna	12	0	12	0	24
VANASCHDW	DEREK W VAN ASCH	Gna	2	0	2	0	4
VANBALENM	HENDRIKA M E VAN BALEN	Gna	1	0	0	0	1
VANDAMC	CHRISTIANA A VAN DAM	Gna	0	1	0	0	1
VANDAMP	PETER VANDAM	Gna	0	1	0	0	1
VANDAMV	ANNENIEKE VAN DAM	Gna	0	1	0	0	1
VANDORSSE	JACOB C D H VAN DORSSSEN	Gna	1	0	0	0	1
VANGINKEL	THE ESTATE OF REYER J VAN GINKEL	Gna	0	1	0	0	1
VANSTAVER	HENRY VAN STAVEREN	Gna	0	2	0	0	2
VANVLYMEN	BERNARDUS J VAN VLYMEN	Gna	1	0	1	0	2
VAUSEAK	ALLAN K VAUSE	Gna	1	0	0	0	1
VAUSESNM	NOELA M VAUSE	Gna	1	0	0	0	1
VEALEAJ	AUDREY J VEALE	Gna	2	0	1	0	3
VENVILLE	ELAINE F VENVILLE	Gna	5	0	5	0	10
VERCOEP	FLT LT PAUL S VERCOE	Gna	0	1	0	0	1
VEREJONES	PETER VERE-JONES	Gna	1	0	1	0	2
VERNONAE	ANNE E VERNON	Gna	1	0	1	0	2
VERNONCD	CLARENCE D VERNON	Gna	1	0	1	0	2
VERNONMD	MARK D VERNON	Gna	1	0	1	0	2
VERNONME	MAUREEN E VERNON	Gna	1	0	1	0	2
VERNONRC	ROBERT C VERNON	Gna	1	0	1	0	2
VERRYHL	HORACE L VERRY	Gna	1	0	1	0	2
VERSCHAFF	JAN A VERSCHAFFELT	Gna	0	1	0	0	1
VICKERMAN	ANTHONY R VICKERMAN	Gna	1	0	1	0	2
VICKERSFL	F L VICKERS	Gna	2	0	2	0	4
VIDGENLC	LEONARD C VIDGEN	Gna	1	0	0	0	1
VINCENTGF	GEORGE F VINCENT	Gna	2	0	0	0	2
VIVEQUINE	PIERRE VIVEQUINE	Gna	0	1	0	0	1
VOYCE	RICHARD VOYCE	Gna	1	0	0	0	1
WADDELLJ	JAMES F WADDELL	Gna	0	0	5	0	5
WAGENERWE	WILFRED E WAGENER	Gna	0	4	0	0	4
WALKERAW	ANDREW W WALKER	Gna	1	0	1	0	2
WALKERBM	BARBARA M WALKER	Gna	1	0	0	0	1
WALKERBO	BRUCE O WALKER	Gna	0	0	1	0	1
WALKERHJ	HELEN J WALKER	Gna	2	0	0	0	2
WALKERJP	JOHN P WALKER	Gna	1	0	1	0	2
WALKERK	KENNETH A WALKER	Gna	0	1	0	0	1
WALKERMJ	MICHAEL J WALKER	Gna	1	0	1	0	2
WALKERPE	PHYLLIS E WALKER	Gna	1	0	1	0	2
WALKERSP	S P WALKER	Gna	1	0	1	0	2
WALLACEEF	ELIZABETH F WALLACE	Gna	1	0	0	0	1
WALLACET	THOMAS B WALLACE	Gna	0	0	1	0	1
WALLACEW	THE ESTATE OF WILLIAM DOUGLAS WALLACE	Gna	0	0	1	0	1
WALLISDR	DAVID R WALLIS	Gna	1	0	1	0	2
WALLISIG	IAN G WALLIS	Gna	0	1	0	0	1
WALLISJP	JAMES P WALLIS	Gna	1	0	1	0	2
WALLISPH	PHILLIP H WALLIS	Gna	1	0	1	0	2
WALLISRN	ROGER N WALLIS	Gna	1	0	1	0	2
WALLISSR	S R WALLIS	Gna	1	0	1	0	2
WALLMR	MERYL R WALL	Gna	1	0	1	0	2
WALLSDM	SYDNEY DAVID MARTIN WALL	Gna	1	0	1	0	2
WALMSLEYP	PATRICIA E WALMSLEY	Gna	1	0	0	0	1
WALSHCH	CAROLYN H WALSH	Gna	0	1	0	0	1
WALTONCE	COLIN E WALTON	Gna	0	1	0	0	1
WALTONEA	THE ESTATE OF ELZABETH A WALTON	Gna	0	1	0	0	1
WALTONK	KEITH WALTON	GNA	0	1	0	0	1

WALTONNJ	THE ESTATE OF N J WALTON	Gna	0	1	0	0	1
WARBURTON	WILLIAM E WARBURTON	Gna	10	0	10	0	20
WARDEJ	EVAN JOHN WARD	Gna	0	0	1	0	1
WARDGAE	GILBERT A E WARD	Gna	1	0	1	0	2
WARDJF	JOHN F WARD	Gna	0	1	0	0	1
WARDJV	JUDITH V WARD	Gna	1	0	0	0	1
WARDLH	LEWIS H WARD	Gna	1	0	1	0	2
WARDRA	ROSEMARIE A WARD	Gna	1	0	1	0	2
WARINGGR	GAVIN R WARING	GNA	3	1	3	0	7
WARRENGJ	ESTATE OF GEOFFREY J WARREN	Gna	1	0	1	0	2
WARRENGM	GRENVILLE M WARREN	Gna	0	1	0	0	1
WARRENR	RACHEL D WARREN	Gna	0	1	0	0	1
WARRENTN	THOMAS N WARREN	Gna	0	1	0	0	1
WATSONML	MARY L WATSON	Gna	10	0	0	0	10
WATSONWRB	WILLIAM R B WATSON	Gna	10	0	0	0	10
WAYGOODJL	JAMES L M WAYGOOD	Gna	1	0	1	0	2
WEAVERWA	WILLIAM A WEAVER	Gna	5	0	5	0	10
WEBBAD	A D WEBB	Gna	1	0	1	0	2
WEBBERCD	CONSTANCE D WEBBER	Gna	0	0	1	0	1
WEBBERJOHN	THE ESTATE OF JOHN MCCRISTELL WEBBER	GNA	2	0	0	0	2
WEBBFE	FREDERICK E WEBB	Gna	1	0	1	0	2
WEBBM	MICAH JOHN WEBB	Gna	2	0	2	0	4
WEBSTERBJ	BRIAN J WEBSTER	Gna	1	0	1	0	2
WEBSTERWB	WILLIAM B WEBSTER	Gna	2	0	0	0	2
WEEKSGJ	GEORGE J WEEKS	Gna	1	0	0	0	1
WEIRAM	ANNETTE M WEIR	Gna	0	0	1	0	1
WEISERP	PHILIP R WEISER	Gna	0	1	0	0	1
WESTLANDA	ALBERT MARK WESTLAND	Gna	1	0	1	0	2
WESTLANDP	MRS PATRICIA W WESTLAND	Gna	1	0	1	0	2
WESTWOODG	GARY J WESTWOOD	Gna	0	1	0	0	1
WHEATCROF	GILLIAN M WHEATCROFT	Gna	2	0	2	0	4
WHEELER	RICHARD CHARLES WHEELER	GNA	0	0	1	0	1
WHEELERBJ	BETTY JOYCE WHEELER	Gna	2	0	2	0	4
WHEELERJ	JOHN A WHEELER	Gna	0	1	0	0	1
WHEELERL	LOUISES WHEELER	Gna	0	1	0	0	1
WHITEA	ALAN M WHITE	Gna	0	1	0	0	1
WHITEAW	ALVAN W WHITE	Gna	1	0	1	0	2
WHITEDW	D W WHITE	Gna	1	0	1	0	2
WHITEMANR	ROBIN E WHITEMAN	GNA	1	0	0	0	1
WHITERE	ROBERT E WHITE	Gna	1	0	1	0	2
WHITERN	RICHARD N WHITE	Gna	0	1	0	0	1
WHITFORDL	LANCE WHITFORD	Gna	10	0	0	0	10
WHITLOCK	NEIL M WHITLOCK	Gna	0	1	0	0	1
WHITROWAM	ANGELA M WHITROW	Gna	1	0	1	0	2
WHITSONAJ	A J S WHITSON	Gna	2	0	2	0	4
WHYTEDM	DIANA M WHYTE	Gna	1	0	0	0	1
WHYTEH	HELEN WHYTE	Gna	1	0	0	0	1
WHYTEHD	HENRY DUSTIN WHYTE	GNA	2	0	0	0	2
WHYTEP	PATRICK JAMES WHYTE	GNA	3	0	0	0	3
WHYTESM	SARAH M WHYTE	Gna	1	0	1	0	2
WICKENDON	GEORGE L WICKENDON	Gna	3	0	0	0	3
WICKHAAM	ANNA MARY WICKHAM	Gna	1	0	1	0	2
WICKHAMC	CHARLOTTE S WICKHAM	Gna	0	1	0	0	1
WICKHAMER	ELIZABETH R WICKHAM	Gna	1	0	1	0	2
WICKHAMG	G WICKHAM	Gna	0	1	0	0	1
WICKHAMJR	JANET R WICKHAM	Gna	1	0	1	0	2
WICKHAMKV	KATHERINE V WICKHAM	Gna	1	0	1	0	2
WICKHAMM	MAX WICKHAM	Gna	0	2	0	0	2
WICKHAMR	ROSEMARY J WICKHAM	Gna	0	1	0	0	1
WICKHAMRB	ROBERT B L WICKHAM	Gna	1	0	1	0	2
WICKHAMSV	SARAH V WICKHAM	Gna	1	0	1	0	2
WIGLEYHR	THE ESTATE OF HENRY R WIGLEY	Gna	1	0	1	0	2
WILESDN	DAVID N WILES	Gna	0	0	1	0	1
WILKINSON	DAWSON L WILKINSON	Gna	0	2	0	0	2
WILKINSON	RALPH E WILKINSON	Gna	1	0	0	0	1
WILKSEG	MR E G WILKS	Gna	2	0	1	0	3
WILLACYAG	ALLAN G WILLACY	GNA	1	0	1	0	2
WILLACYBA	Estate of Brian A Willacy	Gna	1	0	1	0	2
WILLACYGR	GLEN R WILLACY	GNA	1	0	1	0	2
WILLACYRC	Estate of Ronald C Willacy	Gna	1	0	1	0	2
WILLAIMSR	RONALD WILLIAMS	Gna	0	1	0	0	1
WILLCOXAE	ALBERT E WILLCOX	Gna	1	0	1	0	2
WILLCOXM	MERVILLE WILLCOX	Gna	0	1	0	0	1
WILLIAMSA	THE ESTATE OF ALFRED L WILLIAMS	Gna	2	0	2	0	4
WILLIAMSAP	ANTHONY P M WILLIAMS	Gna	1	0	0	0	1

WILLIAMSD	DAVID R WILLIAMS	Gna	0	1	0	0	1
WILLIAMSD	D WILLIAMS	Gna	0	0	1	0	1
WILLIAMSE	ELIZABETH A WILLIAMS	Gna	5	0	0	0	5
WILLIAMSE	EDNA WILLIAMS	Gna	1	0	0	0	1
WILLIAMSE	EDWARD E T WILLIAMS	Gna	1	0	0	0	1
WILLIAMSG	GEOFFREY N G WILLIAMS	Gna	1	0	1	0	2
WILLIAMSJ	JOHN WILLIAMS	Gna	0	1	0	0	1
WILLIAMSJ	JAMES L H WILLIAMS	Gna	0	1	0	0	1
WILLIAMSK	KATE WILLIAMS	Gna	0	0	1	0	1
WILLIAMSO	KEITH E WILLIAMSON	Gna	2	0	2	0	4
WILLIAMSO	BEVERLEY M WILLIAMSON	Gna	2	0	0	0	2
WILLIAMSO	WARRICK T WILLIAMSON	GNA	0	1	0	0	1
WILLIAMSP	PETER W G WILLIAMS	Gna	1	0	0	0	1
WILLIAMSS	S L H WILLIAMS	Gna	0	1	0	0	1
WILLIAMSSP	STEPHEN PHILIP WILLIAMS	Gna	1	0	1	0	2
WILLISAS	AKEXANDER SAM WILLIS	Gna	0	1	0	0	1
WILLISP	PRUDENCE WILLIS	Gna	1	0	1	0	2
WILLISSM	SUSAN M WILLIS	Gna	1	0	1	0	2
WILLSADP	ALLAN D P WILLS	Gna	1	0	0	0	1
WILSONC	MRS CLUNIE WILSON	Gna	1	0	1	0	2
WILSONDM	DIANNA M WILSON	Gna	0	0	1	0	1
WILSONEW	ELIZABETH W WILSON	Gna	3	0	0	0	3
WILSONFJC	FREDERICK J C WILSON	Gna	3	0	0	0	3
WILSONHKF	HOWIE K F WILSON	Gna	2	0	2	0	4
WILSONJ	JOCELYN WILSON	Gna	0	1	0	0	1
WILSONJG	JOHN G WILSON	Gna	1	0	0	0	1
WILSONJS	JAMES S WILSON	Gna	1	0	0	0	1
WILSONL	MR L K WILSON	Gna	0	1	0	0	1
WILSONM	MICHAEL H WILSON	Gna	0	1	0	0	1
WILSONN	NEIL J WILSON	Gna	0	1	0	0	1
WILSONRA	ROSS A WILSON	Gna	1	0	0	0	1
WILSONRL	ROBERT L WILSON	Gna	1	0	0	0	1
WILSONRMA	THE ESTATE OF ROBERT M A WILSON	Gna	5	0	5	0	10
WILSONVM	VIRGINIA M WILSON	Gna	1	0	0	0	1
WILTONRLN	RICHARD L N WILTON	Gna	1	0	0	0	1
WILTSHIRE	GARY R WILTSHIRE	Gna	0	1	0	0	1
WILTSHIRE	LORIE WILTSHIRE	Gna	0	1	0	0	1
WILTSHIRE	MAXINE S WILTSHIRE	Gna	0	1	0	0	1
WILTSHIRE	THE ESTATE OF MAXWELL H WILSHIRE	Gna	0	1	0	0	1
WILTSHIRE	MARY WILTSHIRE	Gna	0	1	0	0	1
WINCHCOMB	RODNEY T WINCHCOMBE	Gna	1	0	1	0	2
WINGA	ALAN WING	Gna	2	0	2	0	4
WINGE	EILEEN WING	Gna	2	0	2	0	4
WINNBR	BRUCE R WINN	Gna	0	0	1	0	1
WINTERJB	JASON B WINTER	Gna	1	0	0	0	1
WIRUTENEF	FELICITY WI-RUTENE	Gna	0	0	1	0	1
WIRUTENET	TIMI WI-RUTENE	Gna	0	0	1	0	1
WISEJH	JOHN H WISE	Gna	1	0	1	0	2
WITTERJA	JOHN A WITTER	Gna	2	0	2	0	4
WOODCOCKB	THE ESTATE OF BRIAN WOODCOCK	Gna	5	0	5	0	10
WOODER	E R WOOD	Gna	0	1	0	0	1
WOODHOUSE	GRAEME J WOODHOUSE	Gna	0	1	0	0	1
WOODMEA	MARGARET E A WOOD	Gna	5	0	0	0	5
WOODMM	M M WOOD	Gna	0	0	1	0	1
WOODP	PETER WOOD	Gna	0	1	0	0	1
WOOLLERGF	GEOFFREY F WOOLLER	Gna	0	0	1	0	1
WORKMANP	PETER J WORKMAN	Gna	0	1	0	0	1
WORS PJM	JOSEPHINE M WORS P	Gna	2	0	0	0	2
WORTHINGT	SCOTT WORTHINGTON	Gna	0	0	1	0	1
WRIGHTJ	JENNIFER M WRIGHT	GNA	0	1	0	0	1
WRIGHTMAS	ROSEMARY J A WRIGHT-MASSEY	Gna	1	0	0	0	1
WRIGHTRK	THE ESTATE OF ROBERT K WRIGHT	Gna	0	1	0	0	1
WROBLENSK	BRUCE WROBLENSKI	Gna	0	1	0	0	1
WYNNEJONE	GEOFFREY WYNNE-JONES	Gna	1	0	2	0	3
YEREXCR	CHRISTOPHER R YEREX	Gna	1	0	0	0	1
YOCKG	GLENICE YOCK	Gna	0	1	0	0	1
YOLLANDB	BRYAN M YOLLAND	Gna	0	1	0	0	1
YOLLANDP	PAMELA R YOLLAND	Gna	0	1	0	0	1
YORKESJA	ST J A YORKE	Gna	0	0	1	0	1
YOUNGC	CHRISTOPHER S YOUNG	Gna	0	1	0	0	1
YOUNGDL	DONALD L YOUNG	Gna	1	0	1	0	2
YOUNGR	ROSS J YOUNG	Gna	0	1	0	0	1
YOUNGRK	RAYMOND K YOUNG	Gna	2	0	2	0	4
YOUNGS	SHIRLEY K YOUNG	Gna	0	1	0	0	1
YOUNGSP	SONIA P YOUNG	Gna	1	0	1	0	2

ZANDERF	FAY ZANDER	Gna	0	1	0	0	1
ZANDERR	RAYMOND G ZANDER	Gna	0	1	0	0	1
ZWINGLER	RUDOLF ZWINGLE	Gna	0	1	0	0	1