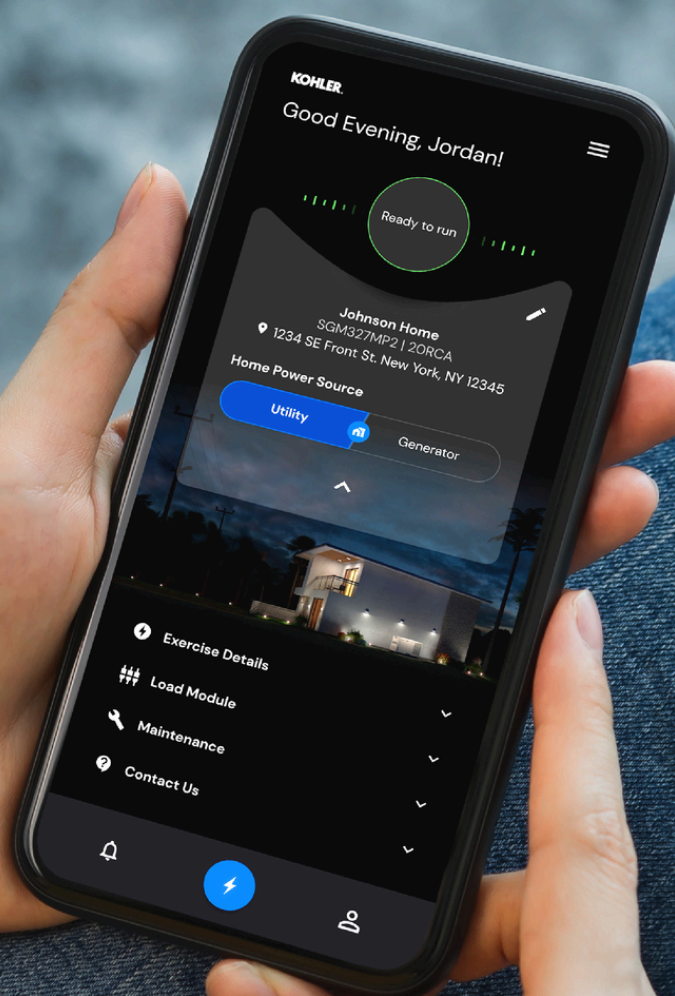


*Remote monitoring from
anywhere, anytime with
the KOHLER® Energy
Management app*



KOHLER® Generators

**Kohler Energy Management
User Guide**



Table of Contents

- 1 Table of Contents
- 2 About the Kohler Home Energy App
- 3 Create a New Account
- 4 Connect Your Generator
- 5 Retrieving the Serial Number and Controller PIN
- 6 Push Notifications
- 7 App Notifications
- 8 About the App Features

The New KOHLER® Energy Management App

Peace of Mind in the Palm of Your Hand

Remote access. Connection at your fingertips. An easy, intuitive interface. It's all wrapped up in the KOHLER Energy Management app. Relax knowing you have everything you need for standby generator control in one place, no matter if you're home or on the go.

Real-time Status Updates So You're Always in the Know

Get real-time alerts on the status of your generator, thanks to the continuous monitoring done by the KOHLER Energy Management app. It's peace of mind in one simple package.

Remote Generator Control

Schedule or start an exercise (test cycle) anytime and from anywhere with the KOHLER Energy Management app. Test cycles are key to ensure your generator is ready to go when you need it most, and the app makes it easier with remote control. You can even confirm your generator's scheduled exercise was completed and run additional tests on demand.

Maintenance Records to Track Past Service

Get a clear view into how your generator has been serviced throughout its lifetime with the KOHLER Energy Management app, thanks to maintenance history records at your fingertips.

Access Historical Logs

Get a transparent view into the history of your generator with the KOHLER Energy Management app—especially helpful if your unit has changed owners.



Need Support? We're Here for You.

You have your dealer and KOHLER customer support readily available in the KOHLER Energy Management app.

Call us: 1-800-544-2444

Email us: generatorfeedback@kohler.com

Get Connected Today

Download the app for tips, alerts, generator insights and so much more.



The KOHLER Energy Management app is compatible with 6kW-60kW Kohler generators, excluding 12RES.

[View FAQ's](#)

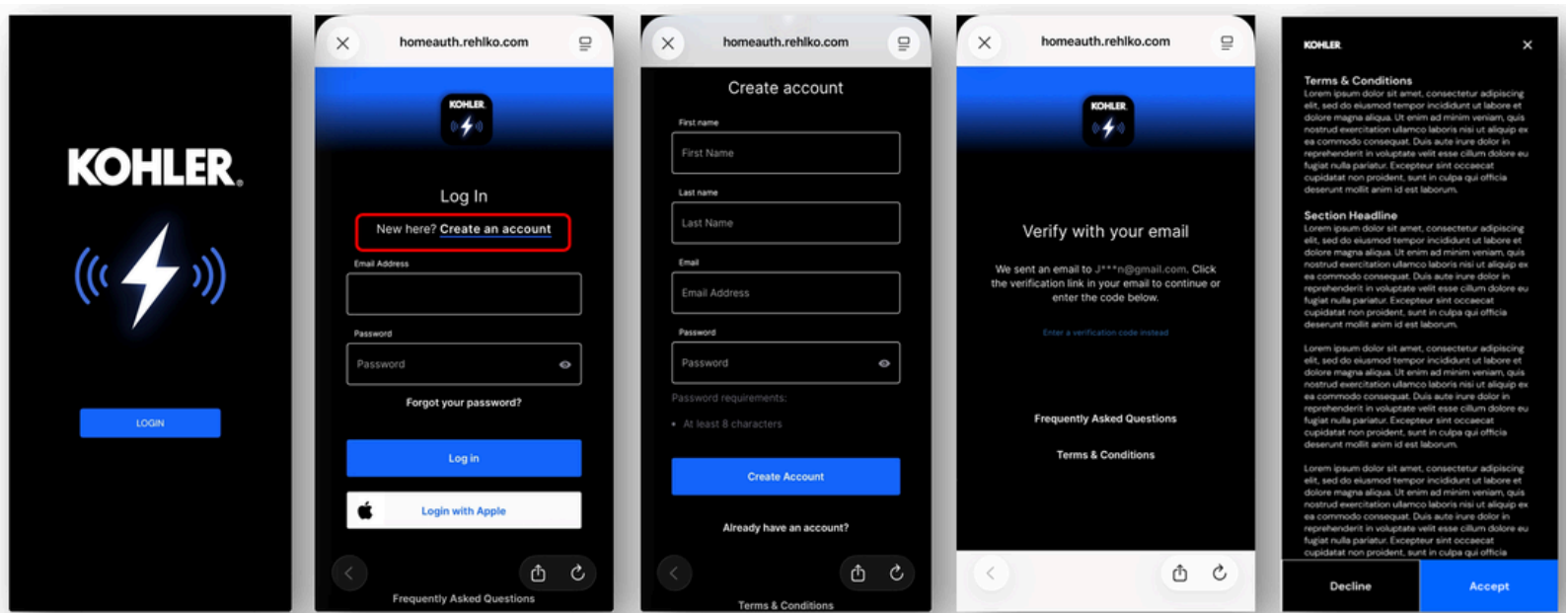


Create a New Account

To create a new account, you must follow the instructions below.

- 1 Tap “Login” from the main app screen
- 2 On the top of the screen tap “Create an account”
- 3 Enter your First Name, Last Name, a valid email address and set your password. Tap “Create Account”
- 4 Accept the app Terms and Conditions. You must scroll to the bottom of the page, signaling you have read the full terms and conditions, before you are able to tap “accept”

Note: Our email system is facilitated by “Okta” and you can expect to receive account verification email from “Okta”



Connect Your Generator

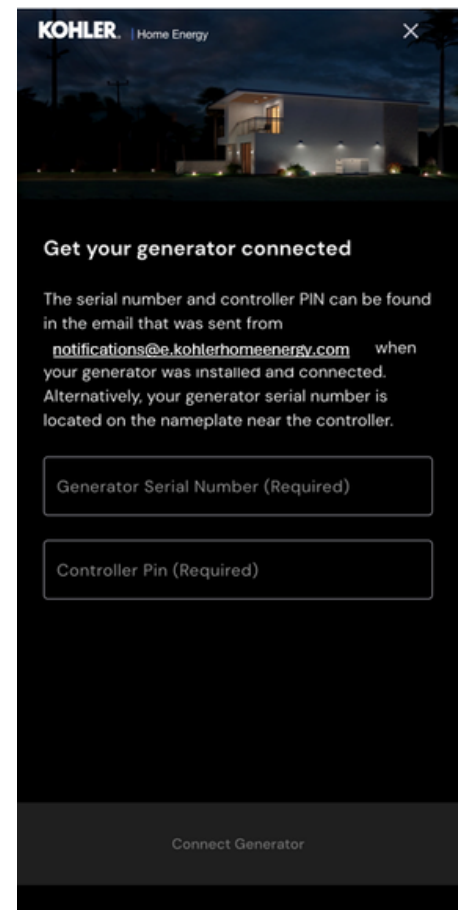
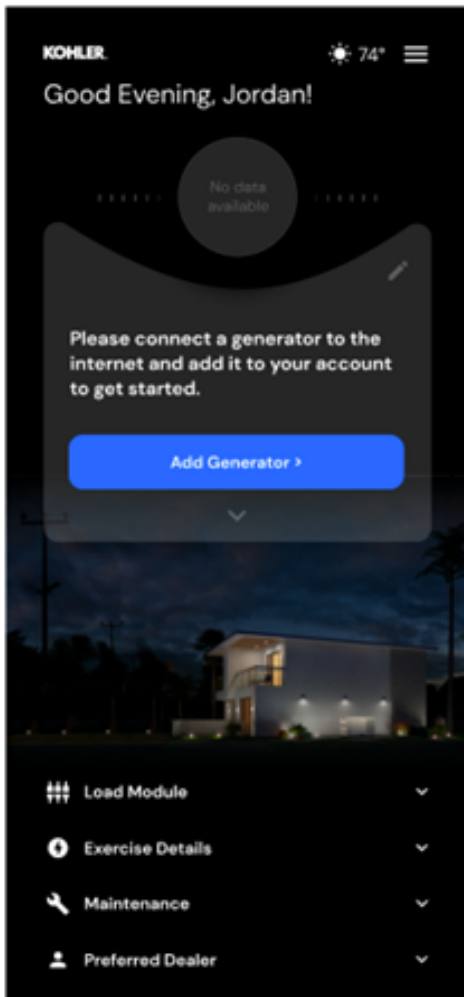
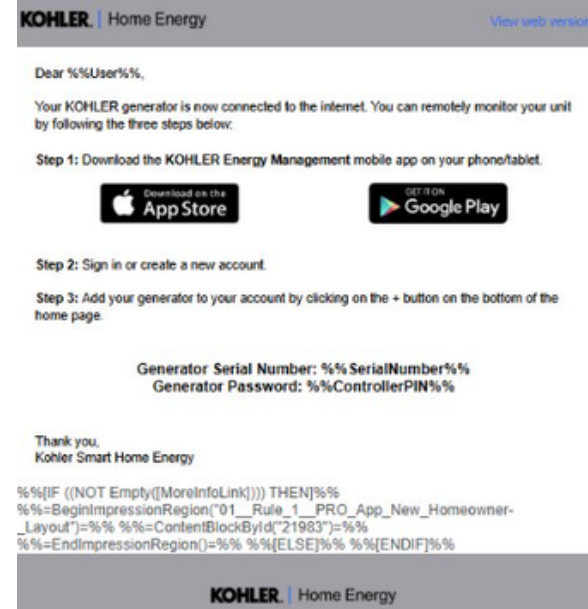
Add your generator to your account by tapping "Add Generator" from either the main dashboard or from the location menu by tapping on the menu icon in the right-hand side of your screen.

Manually enter the 12-digit serial number and 4-digit controller PIN

- Both numbers can be found in an automatic email that you received when your authorized Kohler dealer added your generator to their PRO APP
- The installer may also give you your serial number and controller PIN

The email would come from: notifications@e.kohlerhomeenergy.com
(You would only receive this email if your dealer is using the Home Energy Management PRO APP)

If NEITHER option above applies
The serial number can also be located on the generator nameplate near the controller
To retrieve your controller PIN from the generator, you must reset the controller PIN. See next page for instructions





Retrieving the Serial Number and Controller PIN

How to retrieve and reset the [Controller PIN](#)

IMPORTANT! Be ready to write down the [serial number](#) and [controller PIN](#) which will be displayed for 10 seconds.

Follow this procedure if you own the following: [RESA/RESC/RCL/RESV/VSG/RCA\(L\)](#) Models with [RDC2](#) or [VSC Controller](#)

1. Press [Select](#) (circle between the arrows) and then press the down arrow button to navigate to the Network Information.
2. Press [Select](#). Networking Status is displayed.
3. Press the [Down](#) arrow button. Networking Configuration is displayed.
4. Press [Select](#). “Reset OnCue Password” is displayed.
5. Press and [HOLD](#) the [Select](#) button until “Reset OnCue Password? No” appears. The word “No” will flash.
6. Press the [Up](#) arrow button to change the word “No” to “Yes”.
7. The generator serial number and new PIN will be displayed for 10 seconds. Be sure to write down the [PIN](#) and [Serial Number](#).

Note: The [new controller PIN](#) is only communicated to the server when the controller powers up.

When the controller PIN is reset on the controller, the connection to the internet will be lost. Anyone monitoring this generator on both the [Kohler Energy Management app](#) for homeowners and the [Kohler Energy Management PRO app](#) for dealers will need the updated controller PIN to reconnect their generator to their app.

Push Notifications

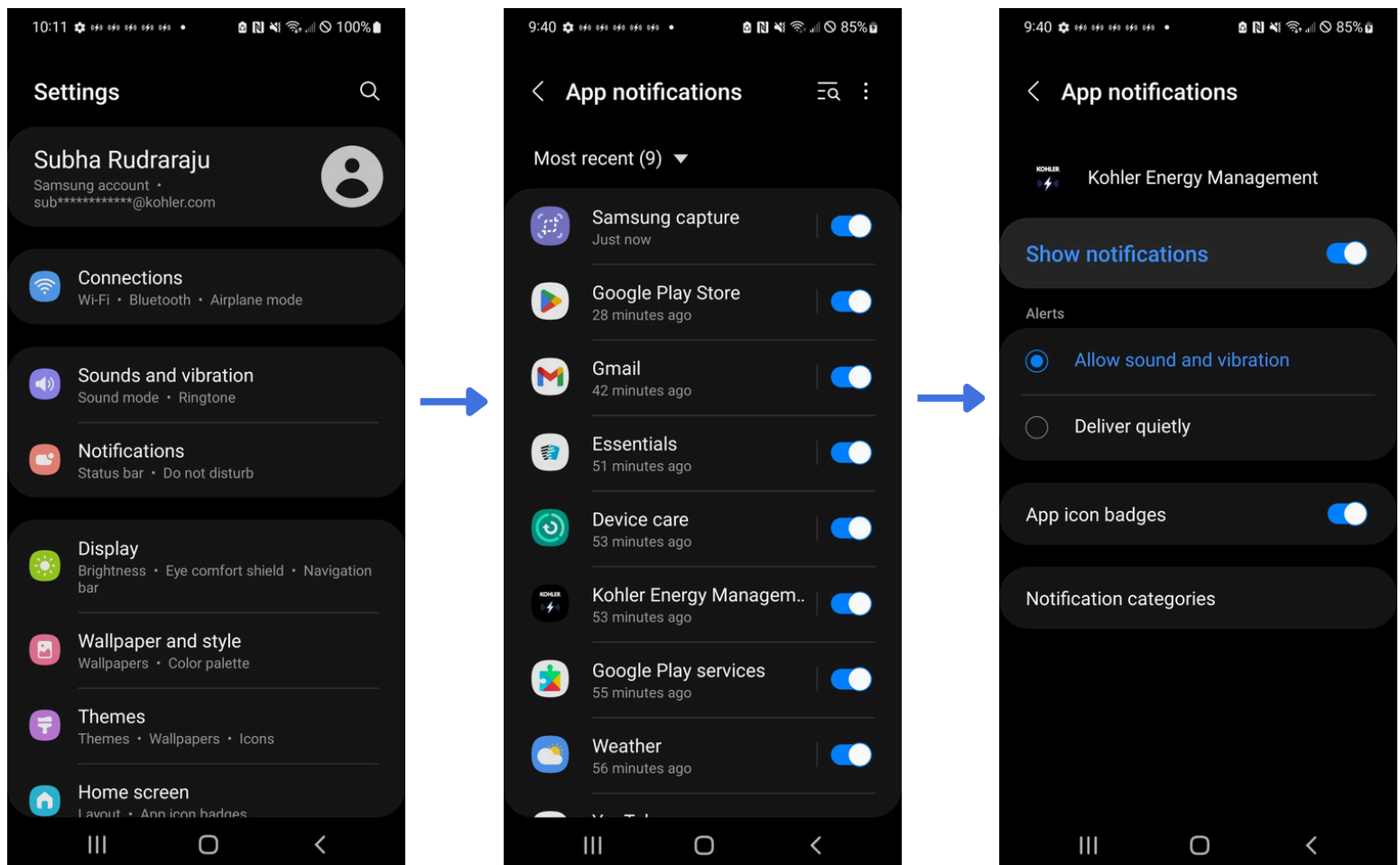
How to Enable **PUSH Notifications** on your mobile phone or tablet

Apple

1. Open your phone settings app.
2. Tap Notifications.
3. Select the Kohler Energy Management app.
4. Toggle the “Allow Notifications” switch to “on”.
5. Choose how and where you want to receive notifications.

Android

1. Go to Settings.
2. Select Apps & Notifications.
3. Tap Notifications.
4. Choose the app you want to manage notifications for Kohler Energy Management.
5. Toggle the “Show notifications” option to on.
6. Select the type of notifications you want to show.

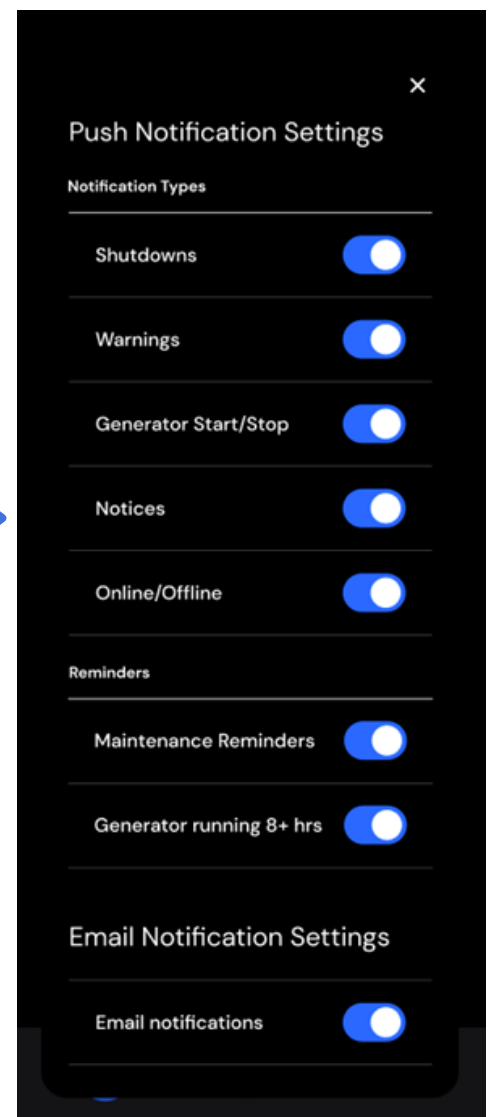
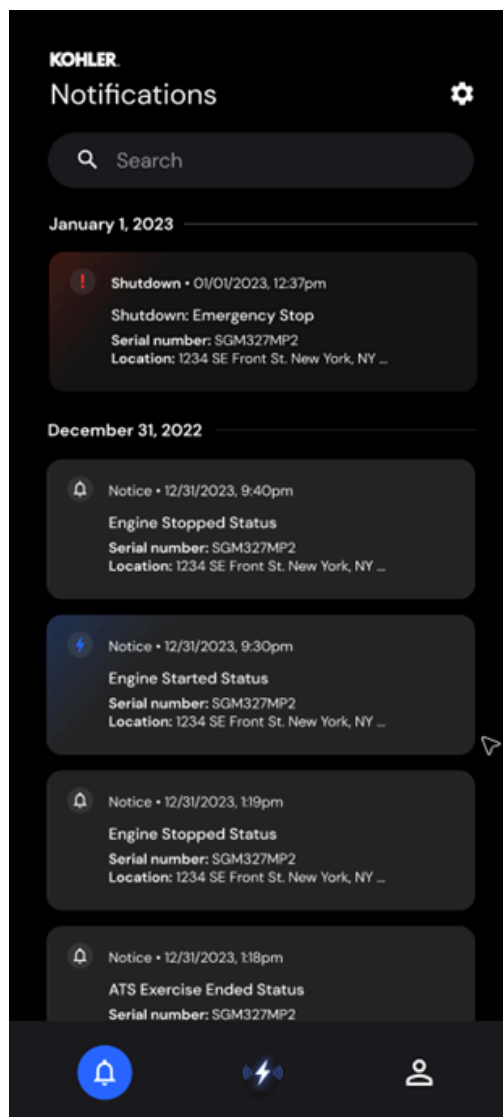
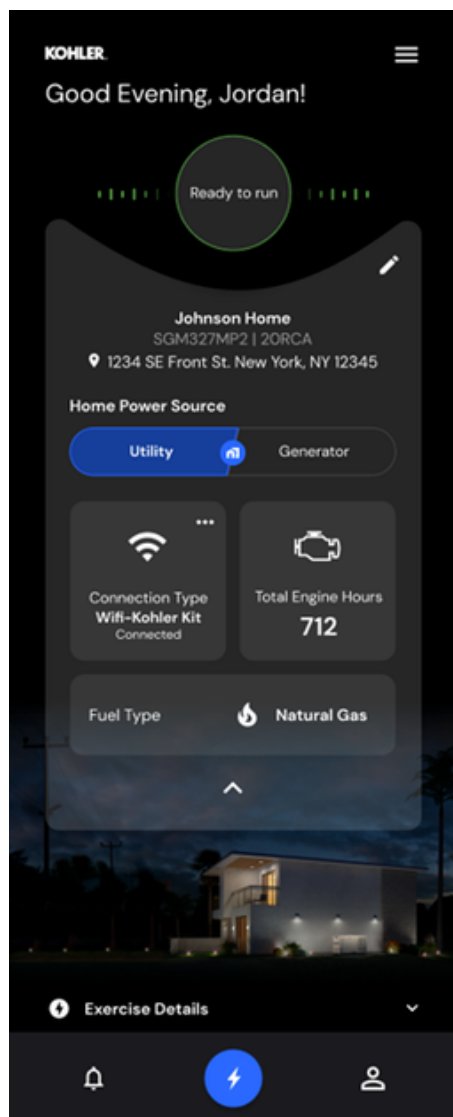




App Notifications

How to Choose Which **Notifications** You Receive About the **APP**

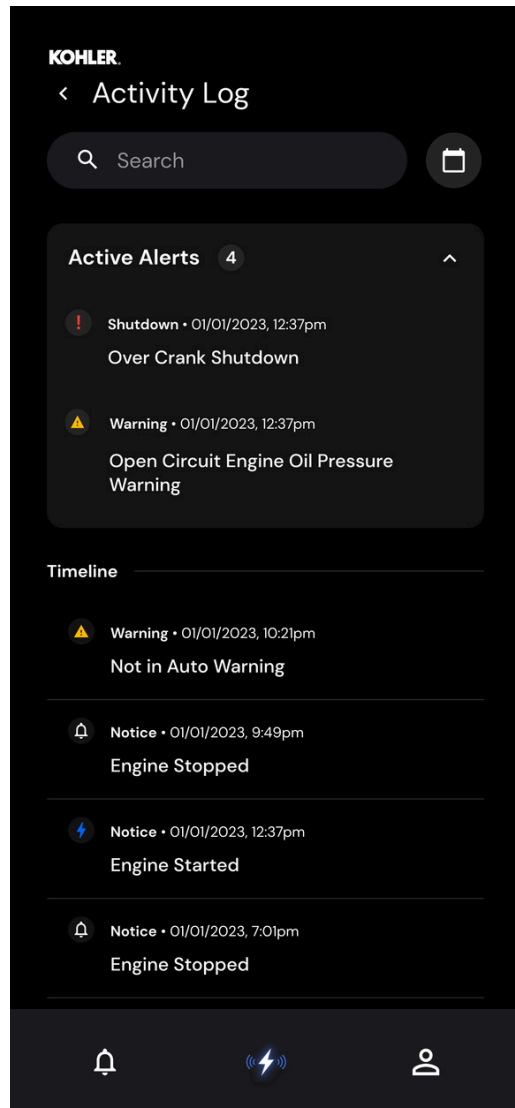
1. Open the KOHLER Energy Management App.
2. From the home screen: Click the bell icon in the bottom left corner.
3. On the Notifications page: click the settings icon in the top right corner.
5. Switch desired notifications to on or off



App Features

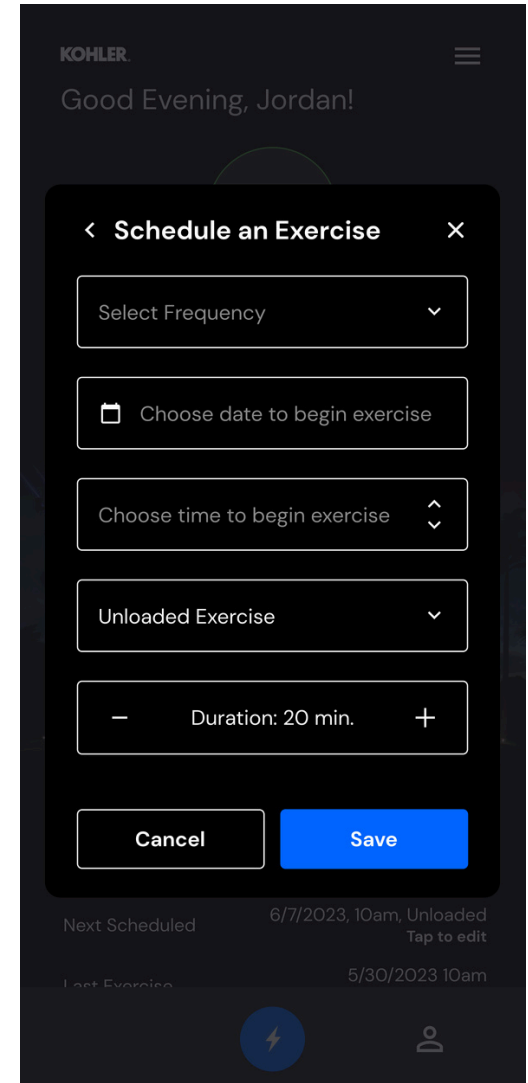
Activity Log

Get a transparent view into the history of your generator-especially helpful if your unit has changed owners.



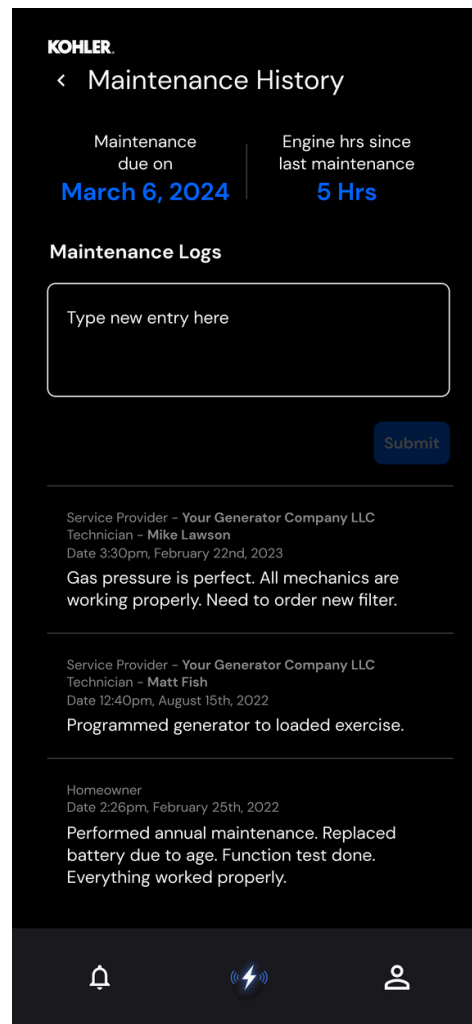
Exercise Details

Schedule or start a test cycle anytime from anywhere with ease to ensure your generator is ready to go when you need it most.



Maintenance

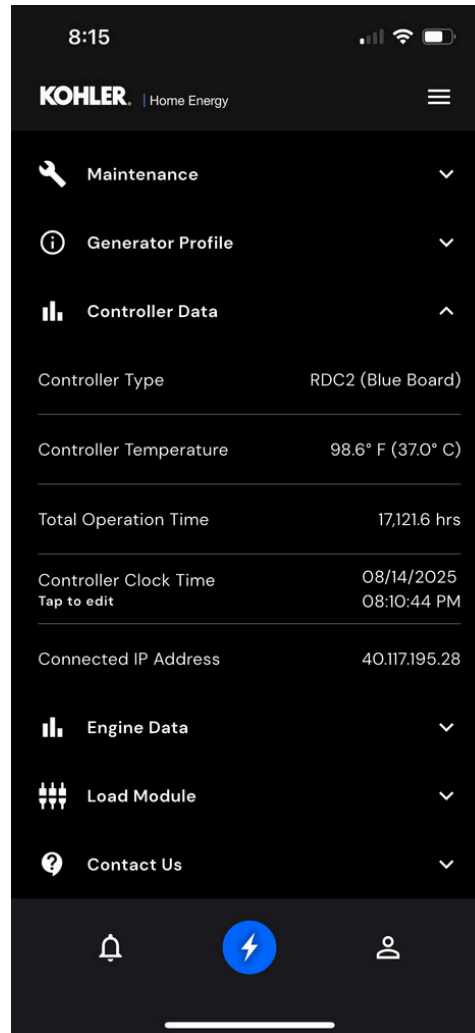
Get a clear view into how your generator has been serviced throughout its lifetime, thanks to maintenance history records at your fingertips.



App Features

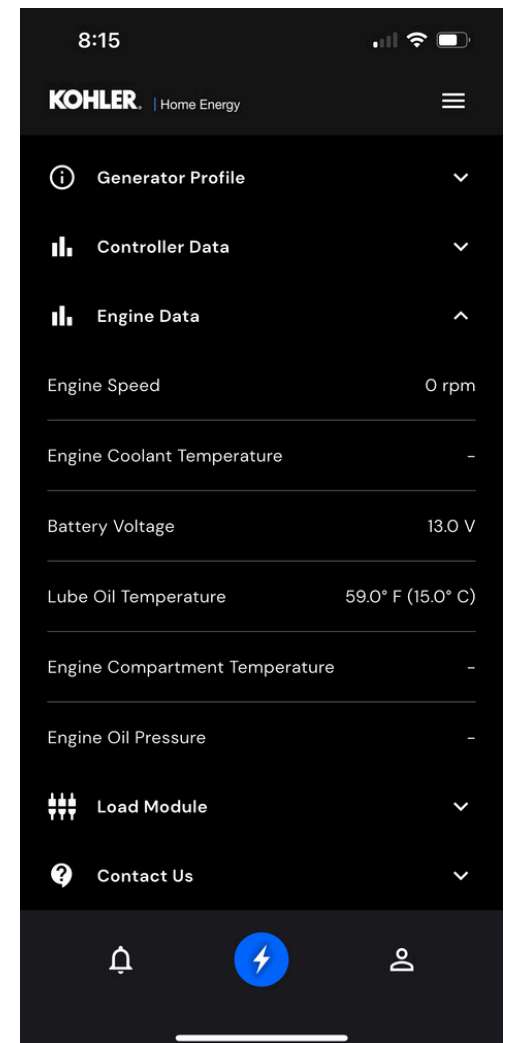
Controller Data

Stay in control with instant access to your controller panel's key details—right from the app, whenever you need them.



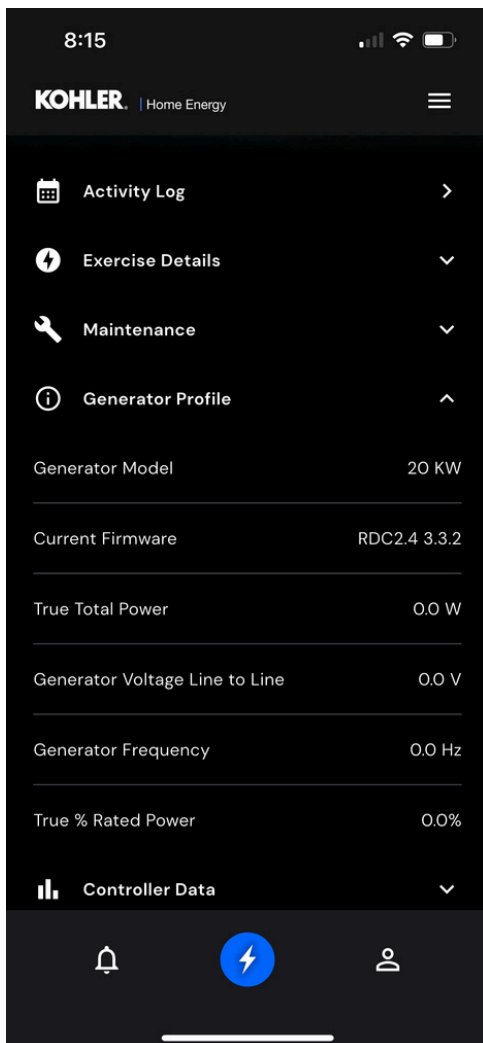
Engine Data

Keep tabs on your engine's performance with real-time data and insights—all seamlessly accessible through the app.



Generator Profile

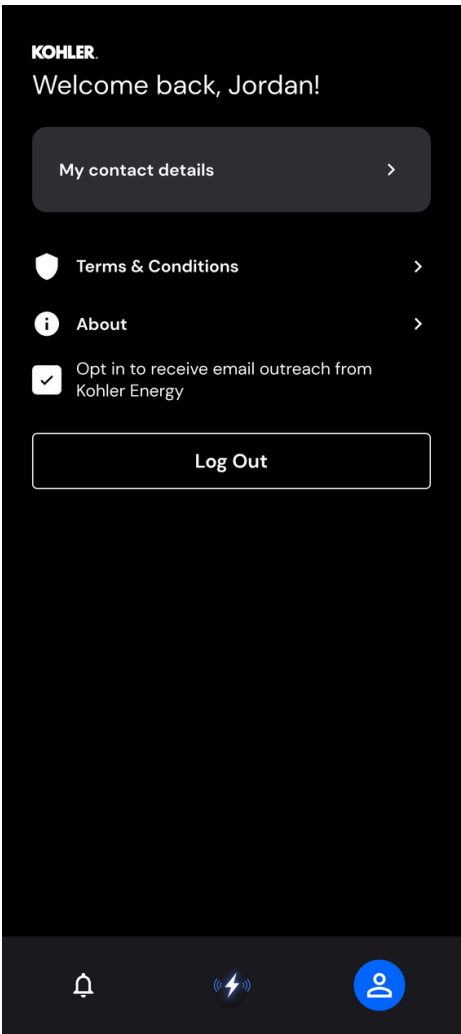
Get instant access to everything you need to know about your generator—from specs to status—all in one convenient app.



App Features

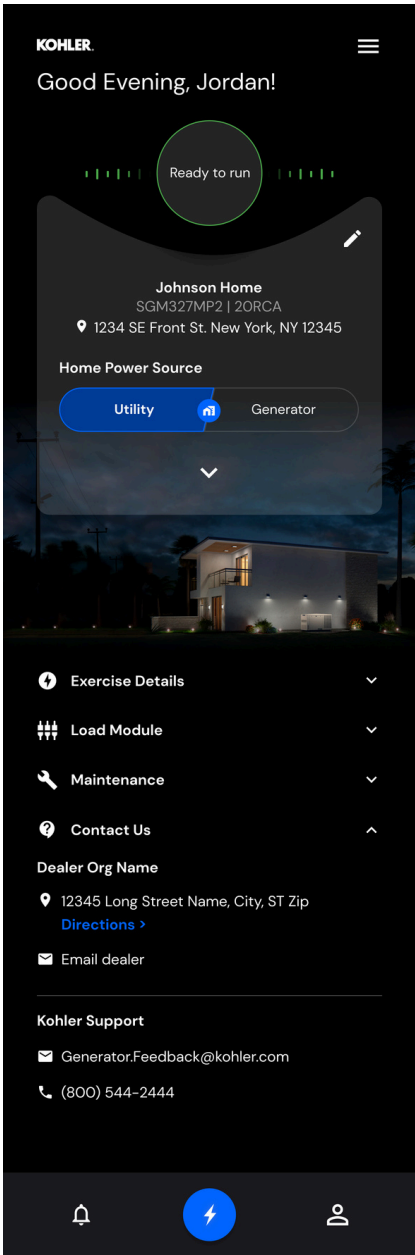
My Profile

Your profile, your way—easily manage and update your personal details right from the app, so everything stays current and connected.



Contact Us

On-demand dealer contact information can be served up quickly, and KOHLER customer support is readily available.



Load Module

Monitor and name load modules for power usage precision during an outage.

