

**PREPARE FOR THE**

**UKMLA  
EXAM**



**ELSEVIER**

with **ClinicalKey<sup>®</sup>** Student

# HOW TO PREPARE FOR THE UKMLA EXAMS USING CLINICALKEY STUDENT



The General Medical Council have created content map which sets out the core knowledge, skills and behaviors needed for UK practice. All applied knowledge test (AKT) and clinical and professional skills assessment (CPSA) content derives from the content map.

[ClinicalKey Student](#) has study resources covering all presentations and conditions mapped to areas of clinical practice laid out in the content map. **This booklet covers the conditions.**

Our study resources combine bite-sized knowledge from Elsevier textbooks including the Crash Course series. Click on the live links below to access the related content on **ClinicalKey Student**.

[ClinicalKey Student](#) also has thousands of questions on high – yield topics tailored to meet UKMLA exam standards. Practicing with the questions on [ClinicalKey Student](#) will help to grow your confidence in this UKMLA exam style of question. You can also:

- Track your performance over time
- Indicate confidence level
- Use in exam or study mode
- Get remediation from Key Elsevier Textbooks

*The Elsevier CK question bank has transformed my preparation for the UKMLA. The question stems are structured very similarly to the real UKMLA questions and the rationales are all based on NICE CKS, meaning the bank's content is reliable, up-to-date and relevant for finals.*

**Mehar, UCL Medical School**

Click [here](#) or ask your librarian if your medical school has access to **ClinicalKey Student**.

# ACUTE AND EMERGENCY

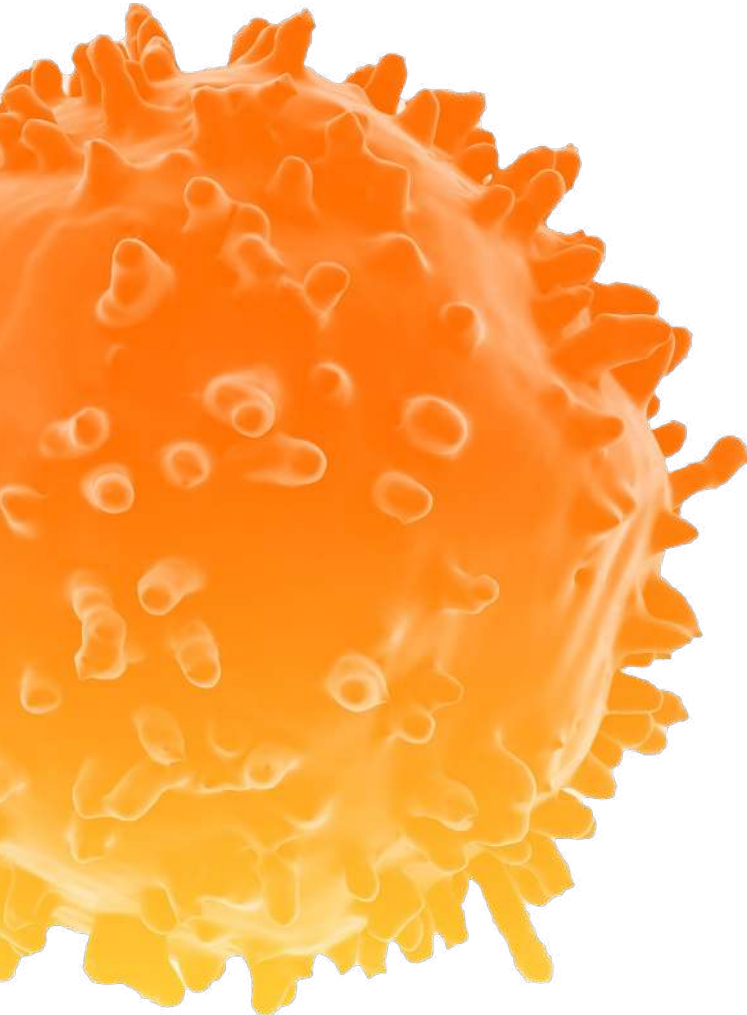


Conditions	Link
Acid-base abnormality	<a href="#">↗</a>
Acute bronchitis	<a href="#">↗</a>
Acute coronary syndromes	<a href="#">↗</a>
Acute kidney injury	<a href="#">↗</a>
Allergic disorder	<a href="#">↗</a>
Anaphylaxis	<a href="#">↗</a>
Aortic aneurysm	<a href="#">↗</a>
Arrhythmias	<a href="#">↗</a>
Cardiac arrest	<a href="#">↗</a>
Cardiac failure	<a href="#">↗</a>
Chronic obstructive pulmonary disease	<a href="#">↗</a>
Compartment syndrome	<a href="#">↗</a>
Deep vein thrombosis	<a href="#">↗</a>
Dehydration	<a href="#">↗</a>
Diabetic ketoacidosis	<a href="#">↗</a>
Drug overdose	<a href="#">↗</a>
Ectopic pregnancy	<a href="#">↗</a>

Conditions	Link
Epilepsy	<a href="#">↗</a>
Epistaxis	<a href="#">↗</a>
Extradural haemorrhage	<a href="#">↗</a>
Gastrointestinal perforation	<a href="#">↗</a>
Haemoglobinopathies	<a href="#">↗</a>
Hyperosmolar hyperglycaemic state	<a href="#">↗</a>
Hyperthermia and hypothermia	<a href="#">↗</a>
Meningitis	<a href="#">↗</a>
Myocardial infarction	<a href="#">↗</a>
Necrotising fasciitis	<a href="#">↗</a>
Non-accidental injury	<a href="#">↗</a>
Pancytopenia	<a href="#">↗</a>
Pneumonia	<a href="#">↗</a>
Pneumothorax	<a href="#">↗</a>
Postpartum haemorrhage	<a href="#">↗</a>
Pulmonary embolism	<a href="#">↗</a>
Raised intracranial pressure	<a href="#">↗</a>

Conditions	Link
Respiratory arrest	<a href="#">↗</a>
Respiratory failure	<a href="#">↗</a>
Self-harm	<a href="#">↗</a>
Sepsis	<a href="#">↗</a>
Spinal cord compression	<a href="#">↗</a>
Spinal cord injury	<a href="#">↗</a>
Spinal fracture	<a href="#">↗</a>
Stroke	<a href="#">↗</a>
Subarachnoid haemorrhage	<a href="#">↗</a>
Subdural haemorrhage	<a href="#">↗</a>
Substance use disorder	<a href="#">↗</a>
Testicular torsion	<a href="#">↗</a>
Toxic shock syndrome	<a href="#">↗</a>
Transfusion reactions	<a href="#">↗</a>
Unstable angina	<a href="#">↗</a>

# CANCER



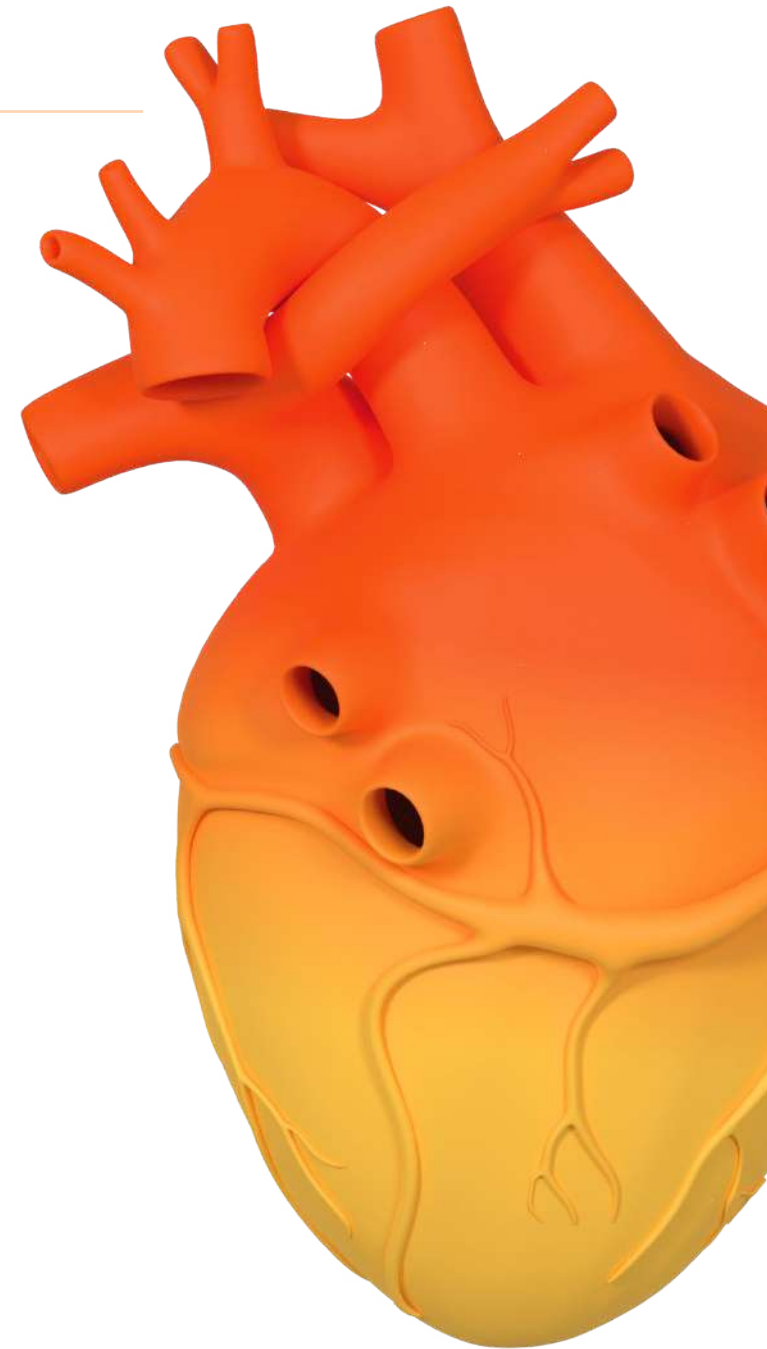
Conditions	Link
Basal cell carcinoma	<a href="#">↗</a>
Bladder cancer	<a href="#">↗</a>
Brain metastases	<a href="#">↗</a>
Breast cancer	<a href="#">↗</a>
Cervical cancer	<a href="#">↗</a>
Colorectal tumours	<a href="#">↗</a>
Endometrial cancer	<a href="#">↗</a>
Gastric cancer	<a href="#">↗</a>
Hypercalcaemia of malignancy	<a href="#">↗</a>
Leukaemia	<a href="#">↗</a>
Lung cancer	<a href="#">↗</a>
Lymphoma	<a href="#">↗</a>
Malignant melanoma	<a href="#">↗</a>
Metastatic disease	<a href="#">↗</a>
Multiple myeloma	<a href="#">↗</a>
Oesophageal cancer	<a href="#">↗</a>

Conditions	Link
Ovarian cancer	<a href="#">↗</a>
Pancreatic cancer	<a href="#">↗</a>
Pathological fracture	<a href="#">↗</a>
Patient on anti-coagulant therapy	<a href="#">↗</a>
Prostate cancer	<a href="#">↗</a>
Squamous cell carcinoma	<a href="#">↗</a>
Testicular cancer	<a href="#">↗</a>

# CARDIOVASCULAR

Conditions	Link
Aneurysms, ischaemic limb and occlusions	<a href="#">↗</a>
Aortic dissection	<a href="#">↗</a>
Aortic valve disease	<a href="#">↗</a>
Arterial thrombosis	<a href="#">↗</a>
Arterial ulcers	<a href="#">↗</a>
Essential or secondary hypertension	<a href="#">↗</a>
Gangrene	<a href="#">↗</a>
Haemochromatosis	<a href="#">↗</a>
Infective endocarditis	<a href="#">↗</a>
Intestinal ischaemia	<a href="#">↗</a>
Ischaemic heart disease	<a href="#">↗</a>
Mitral valve disease	<a href="#">↗</a>
Myocarditis	<a href="#">↗</a>
Pericardial disease	<a href="#">↗</a>
Peripheral vascular disease	<a href="#">↗</a>
Pulmonary hypertension	<a href="#">↗</a>

Conditions	Link
Right heart valve disease	<a href="#">↗</a>
Transient ischaemic attacks	<a href="#">↗</a>
Vasovagal syncope	<a href="#">↗</a>
Venous ulcers	<a href="#">↗</a>



# CHILD HEALTH



Conditions	Link
Anaemia	<a href="#">↗</a>
Appendicitis	<a href="#">↗</a>
Asthma	<a href="#">↗</a>
Atopic dermatitis and eczema	<a href="#">↗</a>
Attention deficit hyperactivity disorder	<a href="#">↗</a>
Autism spectrum disorder	<a href="#">↗</a>
Biliary atresia	<a href="#">↗</a>
Bronchiectasis	<a href="#">↗</a>
Bronchiolitis	<a href="#">↗</a>
Candidiasis	<a href="#">↗</a>
Cellulitis	<a href="#">↗</a>
Cerebral palsy and hypoxic-ischaemic encephalopathy	<a href="#">↗</a>
Chronic kidney disease	<a href="#">↗</a>
Coeliac disease	<a href="#">↗</a>
Conjunctivitis	<a href="#">↗</a>
Constipation	<a href="#">↗</a>

Conditions	Link
Croup	<a href="#">↗</a>
Cushing's syndrome	<a href="#">↗</a>
Cystic fibrosis	<a href="#">↗</a>
Developmental delay	<a href="#">↗</a>
Diabetes mellitus type 1 and 2	<a href="#">↗</a>
Disseminated intravascular coagulation	<a href="#">↗</a>
Down's syndrome	<a href="#">↗</a>
Eating disorders	<a href="#">↗</a>
Epididymitis and orchitis	<a href="#">↗</a>
Epiglottitis	<a href="#">↗</a>
Febrile convulsion	<a href="#">↗</a>
Gastro-oesophageal reflux disease	<a href="#">↗</a>
Henoch-Schonlein purpura	<a href="#">↗</a>
Hepatitis	<a href="#">↗</a>
Hernias	<a href="#">↗</a>
Herpes simplex virus	<a href="#">↗</a>

---

Conditions	Link
Human papilloma virus infection	<a href="#">↗</a>
Hypoglycaemia	<a href="#">↗</a>
Hyposplenism/splenectomy	<a href="#">↗</a>
Hypothyroidism	<a href="#">↗</a>
Idiopathic arthritis	<a href="#">↗</a>
Impetigo	<a href="#">↗</a>
Inflammatory bowel disease	<a href="#">↗</a>
Influenza	<a href="#">↗</a>
Intestinal obstruction and ileus	<a href="#">↗</a>
Intussusception	<a href="#">↗</a>
Kawasaki disease	<a href="#">↗</a>
Lower respiratory tract infection	<a href="#">↗</a>
Malaria	<a href="#">↗</a>
Malnutrition	<a href="#">↗</a>
Measles	<a href="#">↗</a>
Migraine	<a href="#">↗</a>

Conditions	Link
Mumps	<a href="#">↗</a>
Muscular dystrophies	<a href="#">↗</a>
Obesity	<a href="#">↗</a>
Obstructive sleep apnoea	<a href="#">↗</a>
Otitis media	<a href="#">↗</a>
Peptic ulcer disease and gastritis	<a href="#">↗</a>
Periorbital and orbital cellulitis	<a href="#">↗</a>
Peripheral nerve injuries/palsies	<a href="#">↗</a>
Peritonitis	<a href="#">↗</a>
Pyloric stenosis	<a href="#">↗</a>
Reactive arthritis	<a href="#">↗</a>
Rubella	<a href="#">↗</a>
Septic arthritis	<a href="#">↗</a>
Sickle cell disease	<a href="#">↗</a>
Tension headache	<a href="#">↗</a>
Thyrotoxicosis	<a href="#">↗</a>

Conditions	Link
Tonsillitis	<a href="#">↗</a>
Tuberculosis	<a href="#">↗</a>
Upper respiratory tract infection	<a href="#">↗</a>
Urinary tract infection	<a href="#">↗</a>
Urticaria	<a href="#">↗</a>
Viral exanthema	<a href="#">↗</a>
Viral gastroenteritis	<a href="#">↗</a>
Visual field defects	<a href="#">↗</a>
Volvulus	<a href="#">↗</a>



## CLINICAL HAEMATOLOGY

Conditions	Link
Haemophilia	<a href="#">↗</a>
Myeloproliferative disorders	<a href="#">↗</a>
Patient on anti-platelet therapy	<a href="#">↗</a>
Polycythaemia	<a href="#">↗</a>

## CLINICAL IMAGING

Conditions	Link
Lower limb fractures	<a href="#">↗</a>
Lower limb soft tissue injury	<a href="#">↗</a>
Osteomyelitis	<a href="#">↗</a>
Placenta praevia	<a href="#">↗</a>
Surgical site infection	<a href="#">↗</a>
Upper limb fractures	<a href="#">↗</a>
Upper limb soft tissue injury	<a href="#">↗</a>
Lower limb fractures	<a href="#">↗</a>
Lower limb soft tissue injury	<a href="#">↗</a>





## DERMATOLOGY

---

Conditions	Link
Acne vulgaris	<a href="#">↗</a>
Contact dermatitis	<a href="#">↗</a>
Cutaneous fungal infection	<a href="#">↗</a>
Cutaneous warts	<a href="#">↗</a>
Folliculitis	<a href="#">↗</a>
Head lice	<a href="#">↗</a>
Pressure sores	<a href="#">↗</a>
Psoriasis	<a href="#">↗</a>
Scabies	<a href="#">↗</a>

## EAR, NOSE AND THROAT

---

Conditions	Link
Acoustic neuroma	<a href="#">↗</a>
Benign paroxysmal positional vertigo	<a href="#">↗</a>
Infectious mononucleosis	<a href="#">↗</a>
Ménière's disease	<a href="#">↗</a>
Otitis externa	<a href="#">↗</a>
Rhinosinusitis	<a href="#">↗</a>

# ENDOCRINE AND METABOLIC

Conditions	Link
Addison's disease	<a href="#">↗</a>
Diabetes in pregnancy (gestational and pre-existing)	<a href="#">↗</a>
Diabetes insipidus	<a href="#">↗</a>
Diabetic nephropathy	<a href="#">↗</a>
Diabetic neuropathy	<a href="#">↗</a>
Hyperlipidemia	<a href="#">↗</a>
Hyperparathyroidism	<a href="#">↗</a>
Hypoparathyroidism	<a href="#">↗</a>
Osteomalacia	<a href="#">↗</a>
Pituitary tumours	<a href="#">↗</a>
Thyroid eye disease	<a href="#">↗</a>
Thyroid nodules	<a href="#">↗</a>



# GASTROINTESTINAL INCLUDING LIVER

Conditions	Link
Acute cholangitis	<a href="#">↗</a>
Acute pancreatitis	<a href="#">↗</a>
Alcoholic hepatitis	<a href="#">↗</a>
Anal fissure	<a href="#">↗</a>
Ascites	<a href="#">↗</a>
Cholecystitis	<a href="#">↗</a>
Cirrhosis	<a href="#">↗</a>
Diverticular disease	<a href="#">↗</a>
Gallstones and biliary colic	<a href="#">↗</a>
Haemorrhoids	<a href="#">↗</a>

Conditions	Link
Hiatus hernia	<a href="#">↗</a>
Infectious colitis	<a href="#">↗</a>
Irritable bowel syndrome	<a href="#">↗</a>
Liver failure	<a href="#">↗</a>
Malabsorption	<a href="#">↗</a>
Mesenteric adenitis	<a href="#">↗</a>
Necrotising enterocolitis	<a href="#">↗</a>
Perianal abscesses and fistulae	<a href="#">↗</a>
Vitamin B12 and/or folate deficiency	<a href="#">↗</a>

# GENERAL PRACTICE AND PRIMARY HEALTHCARE



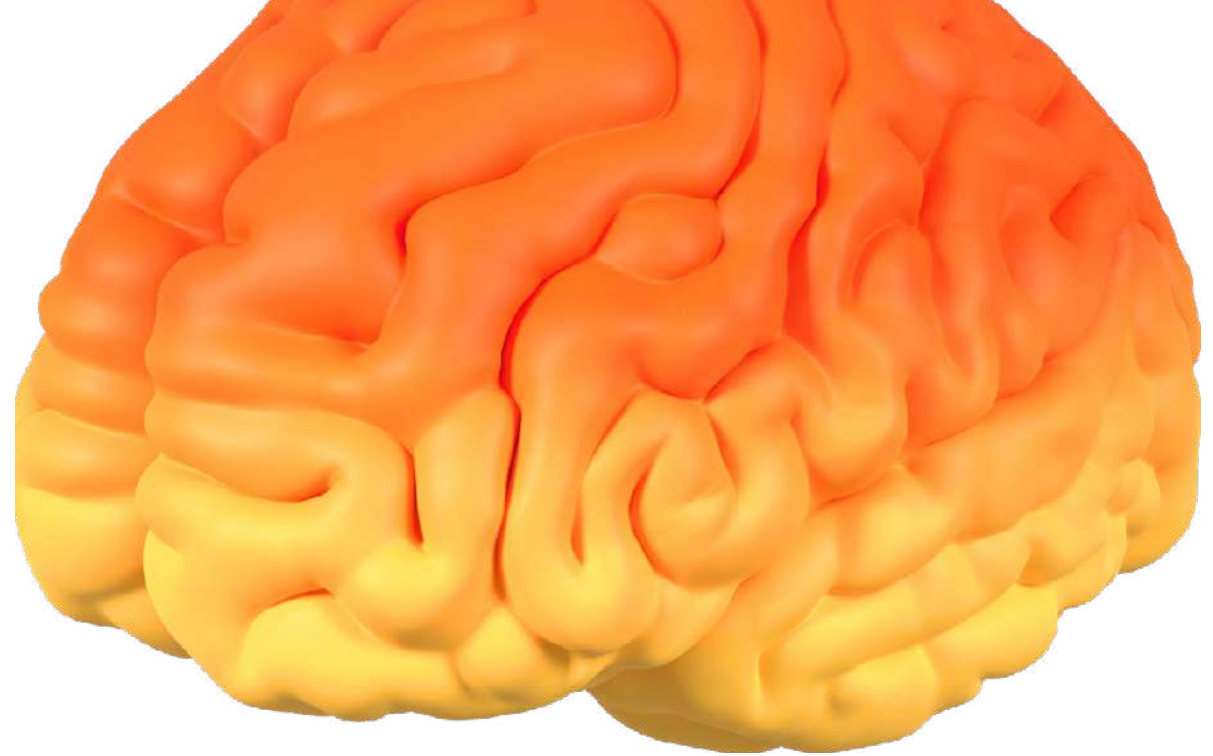
Conditions	Link
Acute stress reaction	<a href="#">↗</a>
Anxiety disorder: generalised	<a href="#">↗</a>
Anxiety, phobias, OCD	<a href="#">↗</a>
Atrophic vaginitis	<a href="#">↗</a>
Bacterial vaginosis	<a href="#">↗</a>
Bell's palsy	<a href="#">↗</a>
Benign eyelid disorders	<a href="#">↗</a>
Benign prostatic hyperplasia	<a href="#">↗</a>
Breast abscess/ mastitis	<a href="#">↗</a>
Bursitis	<a href="#">↗</a>
Chlamydia	<a href="#">↗</a>
Chronic fatigue syndrome	<a href="#">↗</a>
Crystal arthropathy	<a href="#">↗</a>
Dementias	<a href="#">↗</a>
Depression	<a href="#">↗</a>
Disease prevention/screening	<a href="#">↗</a>
Fibromyalgia	<a href="#">↗</a>

Conditions	Link
Gonorrhoea	<a href="#">↗</a>
Lyme disease	<a href="#">↗</a>
Menopause	<a href="#">↗</a>
Osteoarthritis	<a href="#">↗</a>
Osteoporosis	<a href="#">↗</a>
Parkinson's disease	<a href="#">↗</a>
Pelvic inflammatory disease	<a href="#">↗</a>
Polymyalgia rheumatica	<a href="#">↗</a>
Radiculopathies	<a href="#">↗</a>
Syphilis	<a href="#">↗</a>
Trichomonas vaginalis	<a href="#">↗</a>
Trigeminal neuralgia	<a href="#">↗</a>
Urinary incontinence	<a href="#">↗</a>
Varicella zoster	<a href="#">↗</a>
Varicose veins	<a href="#">↗</a>
Whooping cough	<a href="#">↗</a>

# INFECTION

---

Conditions	Link
Brain abscess	<a href="#">↗</a>
Covid-19	<a href="#">↗</a>
Encephalitis	<a href="#">↗</a>
Hospital acquired infections	<a href="#">↗</a>
Human immunodeficiency virus	<a href="#">↗</a>
Infectious diarrhoea	<a href="#">↗</a>
Notifiable diseases	<a href="#">↗</a>
Viral hepatitis	<a href="#">↗</a>



# MEDICINE OF OTHER ADULT

---

Conditions	Link
Delirium	<a href="#">↗</a>

# MENTAL HEALTH

---

Conditions	Link
Anxiety disorder: post-traumatic stress disorder	<a href="#">↗</a>
Bipolar affective disorder	<a href="#">↗</a>
Personality disorder	<a href="#">↗</a>
Schizophrenia	<a href="#">↗</a>
Somatisation	<a href="#">↗</a>
Wernicke's encephalopathy	<a href="#">↗</a>



## NEUROSCIENCES

---

Conditions	Link
Essential tremor	<a href="#">↗</a>
Motor neurone disease	<a href="#">↗</a>
Multiple sclerosis	<a href="#">↗</a>
Myasthenia gravis	<a href="#">↗</a>

## OBSTETRICS AND GYNAECOLOGY

---

Conditions	Link
Cervical screening (HPV)	<a href="#">↗</a>
Cord prolapse	<a href="#">↗</a>
Endometriosis	<a href="#">↗</a>
Fibroids	<a href="#">↗</a>
Obesity and pregnancy	<a href="#">↗</a>
Placental abruption	<a href="#">↗</a>
Pre-eclampsia, gestational hypertension	<a href="#">↗</a>
Termination of pregnancy	<a href="#">↗</a>
Vasa praevia	<a href="#">↗</a>
VTE in pregnancy and puerperium	<a href="#">↗</a>

## MUSCULOSKELETAL

---

Conditions	Link
Ankylosing spondylitis	<a href="#">↗</a>
Rheumatoid arthritis	<a href="#">↗</a>
Sarcoidosis	<a href="#">↗</a>
Systemic lupus erythematosus	<a href="#">↗</a>

# OPHTHALMOLOGY

Conditions	Link
Acute glaucoma	<a href="#">↗</a>
Blepharitis	<a href="#">↗</a>
Cataracts	<a href="#">↗</a>
Central retinal arterial occlusion	<a href="#">↗</a>
Chronic glaucoma	<a href="#">↗</a>
Diabetic eye disease	<a href="#">↗</a>
Infective keratitis	<a href="#">↗</a>
Iritis	<a href="#">↗</a>
Macular degeneration	<a href="#">↗</a>
Optic neuritis	<a href="#">↗</a>
Retinal detachment	<a href="#">↗</a>
Scleritis	<a href="#">↗</a>
Uveitis	<a href="#">↗</a>

# RENAL AND UROLOGY

Conditions	Link
Nephrotic syndrome	<a href="#">↗</a>
Urinary tract calculi	<a href="#">↗</a>

# PALLIATIVE AND END OF LIFE CARE

Conditions	Link
Palliative and end of life care	<a href="#">↗</a>



# RESPIRATORY

---

Conditions	Link
Asbestos-related lung disease	<a href="#">↗</a>
Asthma COPD overlap syndrome	<a href="#">↗</a>
Fibrotic lung disease	<a href="#">↗</a>
Occupational lung disease	<a href="#">↗</a>

# SURGERY

---

Conditions	Link
Breast cysts	<a href="#">↗</a>
Fibroadenoma	<a href="#">↗</a>







**ELSEVIER**