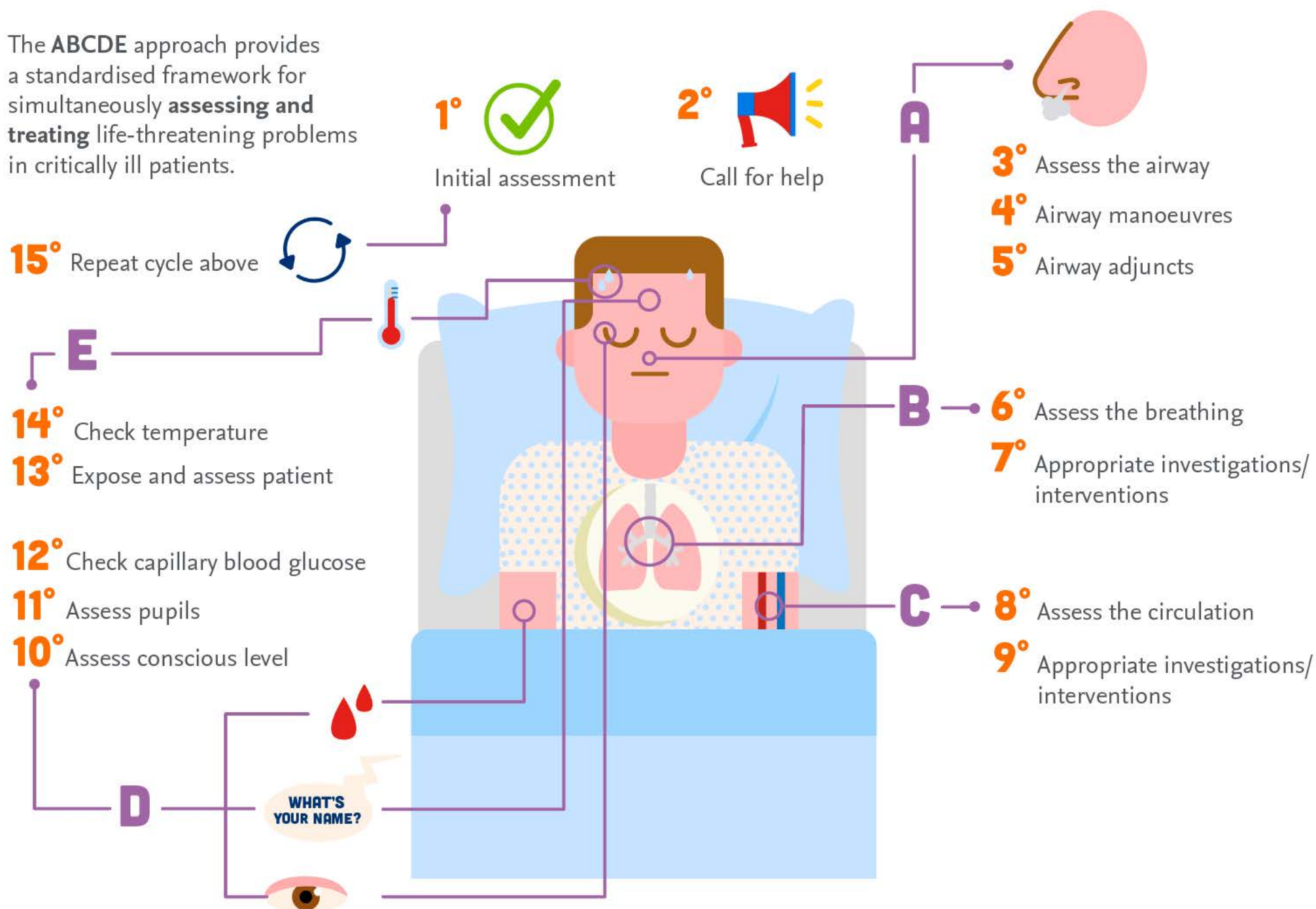


EXAMINATION OF THE CRITICALLY ILL PATIENT: POINT BY POINT



The **ABCDE** approach provides a standardised framework for simultaneously **assessing and treating** life-threatening problems in critically ill patients.



Source: *Macleod's Essentials of Examination*
by Euan Sandilands

Available in print and on **ClinicalKey** Student

