



RDM webinar series

**‘From Strategy to Impact
What you need is an infrastructure
(people & technology) and a mindshift’**

Webinar 3 of 3: ‘RDM is a Team Sport, Not a Single Player Mission’

Best national practices and future outlook

23 March 2023

What will await you today?

- Host: Vinod Mahi, Regional Solutions Sales Manager for Research Intelligence @Elsevier
- 'SND – a national infrastructure for research data'
Max Petzold, Professor in biostatistics & Director @Swedish National Data Service (SND)
- 'The Future of FAIR and Open Data'
Gareth O'Neill, Principal Consultant on Open Science @Technopolis Group

Research Data has become a high priority

- **Funders policies**

Most funders around the world have a policy on Research Data sharing

- **Publishers policies**

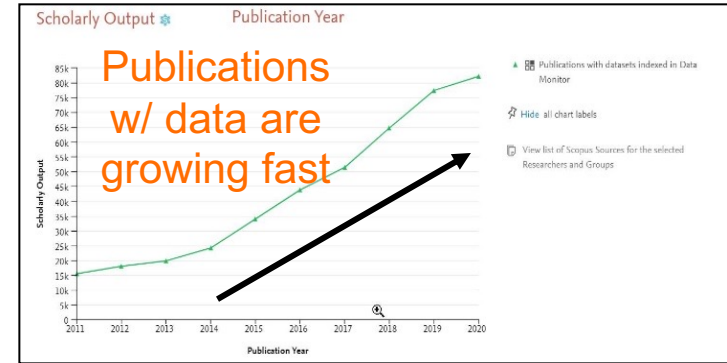
All the largest publishers (incl. Elsevier) have a policy on Research Data sharing

- **Government strategic agendas**

Govts and national bodies around the world



“No opting out of RDM”



US



France



Malaysia



SND – a national infrastructure for research data

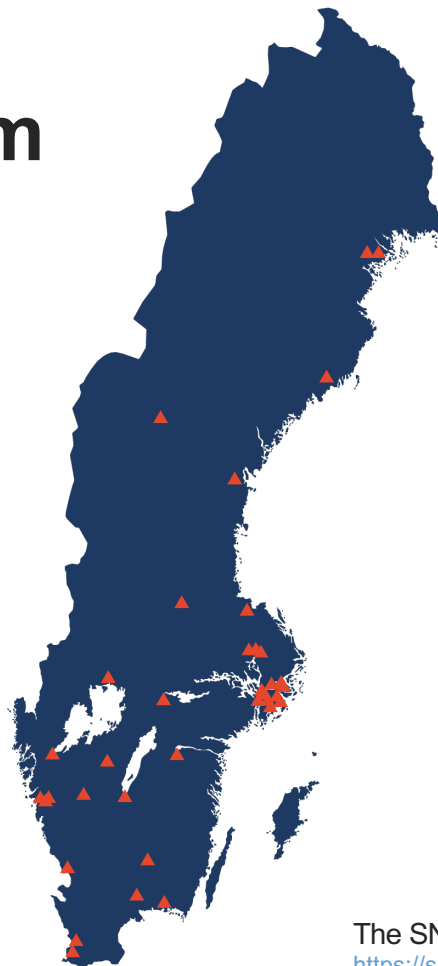
What **is** SND?

- A national infrastructure for making research data accessible, nationally as well as internationally
- A consortium of nine universities, with University of Gothenburg as host university
- A network of another 23 higher education institutions and three research authorities/organisations



The SND consortium

A collaboration between nine universities that govern SND. They contribute with expertise in different scientific fields or domains (Domain Specialists), and development efforts to promote the national work with open access to research data.



Umeå University

Uppsala University

Swedish University of Agricultural Sciences

Stockholm University

Karolinska Institutet

KTH Royal Institute of Technology

University of Gothenburg

Chalmers University of Technology

Lund University

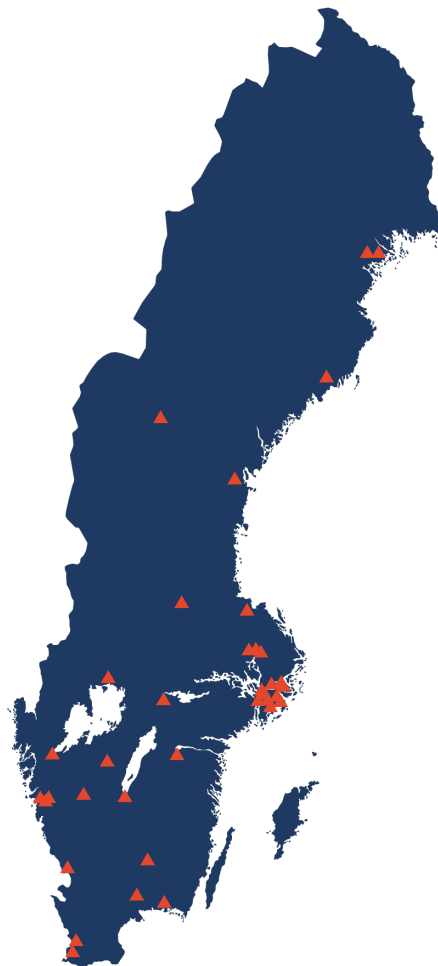
The SND Domain Specialists:

<https://snd.gu.se/en/contact/contact-data-consulting>

The SND Network

A collaboration between 35 higher education institutions and research organisations.

Dalarna University
Örebro University
Karlstad University
University of Skövde
University West
University of Borås
University of Gothenburg
RISE Research Institutes of Sweden
Chalmers University of Technology
Halmstad University
Lund University
Malmö University



Luleå University of Technology
Swedish Polar Research Secretariat
Umeå University
Mid Sweden University
University of Gävle
Uppsala University
National Veterinary Institute
Swedish University of Agricultural Sciences
Mälardalen University
Stockholm University
Karolinska Institutet
KTH Royal Institute of Technology
Stockholm School of Economics
The Swedish School of Sport and Health Sciences
University College Stockholm
Sophiahemmet University
Swedish Defence University
Södertörn University
Linköping University
Jönköping University
Linnaeus University
Kristianstad University Sweden
Blekinge Institute of Technology



What does SND offer?

- Support for open access to research data through training, assistance, and technical solutions



What does SND offer?

- Support for open access to research data through training, assistance, and technical solutions
- A comprehensive, national system for making research data FAIR



What does SND offer?

- Support for open access to research data through training, assistance, and technical solutions
- A comprehensive, national system for making research data FAIR
- A web-based research data catalogue with detailed data descriptions, where data are accessible through direct download or by request



From traditional repository to a distributed network

- SND started 1981 as a traditional repository where researchers within social sciences could upload and share their data
- From 2016 SND developed into a consortium with a truly shared knowledge base and infrastructure within the full network.
- Each member serving their own researchers including storage of data, jointly we develop the know-how & e-tools!
- Thanks to a distributed system we can also handle data with restrictions (sensitive information, copyright, ownership etc).

Thank you!

The Future of FAIR and Open Data

Gareth O'Neill
Elsevier Webinar on RDM
23 March 2023



bit.ly/3yYo6lA

[@gtoneill](https://twitter.com/gtoneill)
gareth.oneill@technopolis-group.com

Open Science Policy in Europe



*Open
Innovation*

involve more stakeholders
in the innovation process

*Open
Science*

facilitate more open
research via digital tools

*Open to
the World*

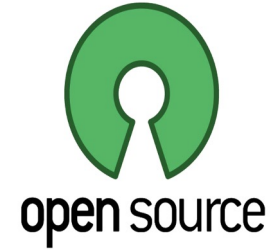
support more societal
impact & collaboration

[European Commission \(2016\)](#)

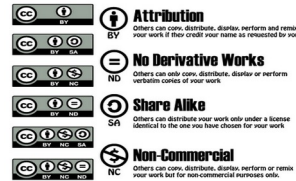
[@gtoneill](#)

gareth.oneill@technopolis-group.com

Open Science Practices



OPEN LICENSING

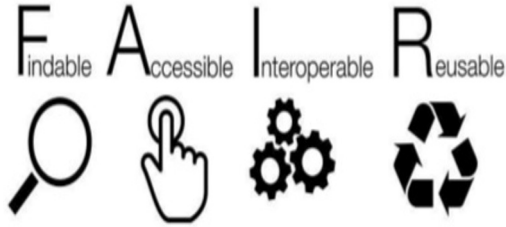


[FOSTER Taxonomy of Open Science](#) | [Masuzzo & Martens \(2017\)](#)

[@gtoneill](#)

gareth.oneill@technopolis-group.com

FAIR versus Open Data



- FAIR data \neq open data
- FAIR principles for data:
 - > F = Findable
 - > A = Accessible
 - > I = Interoperable
 - > R = Reusable
- FAIR data can be open(ed)

[Open Data Examples](#) | [Go FAIR](#) | [Mons & O'Neill \(2019\)](#)

[@gtoneill](#)

gareth.oneill@technopolis-group.com

FAIR Data



Findable

- (Meta)data are assigned a globally unique and persistent identifier
- Data are described with rich metadata
- Metadata clearly and explicitly include in the identifier of the data it describes
- (Meta)data are registered or indexed in a searchable resource



Interoperable

- (Meta)data use a formal, accessible, shared and broadly applicable language
- (Meta)data use vocabularies that follow FAIR principles
- (Meta)data include qualified references to other (meta)data

GO FAIR



Accessible

- (Meta)data are retrievable by their identifier using a standardized protocol
- The protocol is open, free and universal
- The protocol allows for authentication and authorization, as needed
- Metadata are accessible, even when the data are no longer available



Reusable

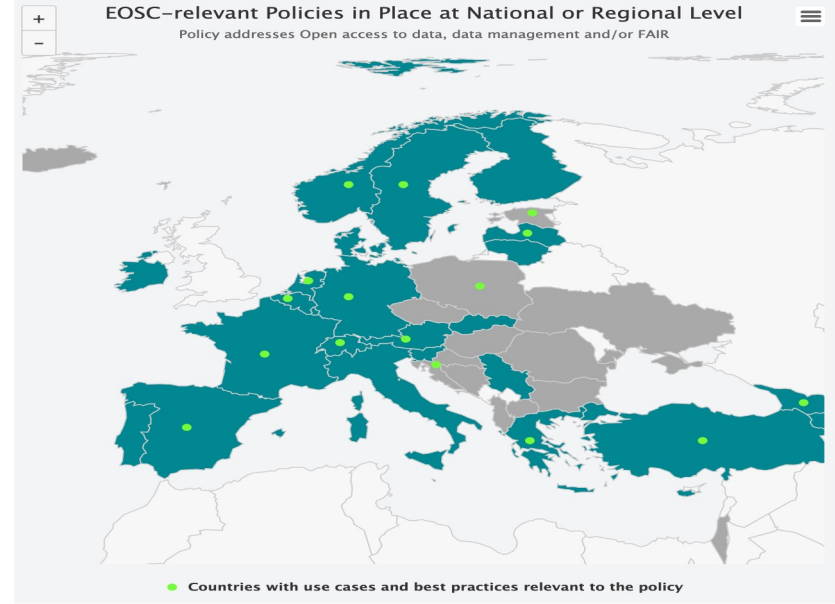
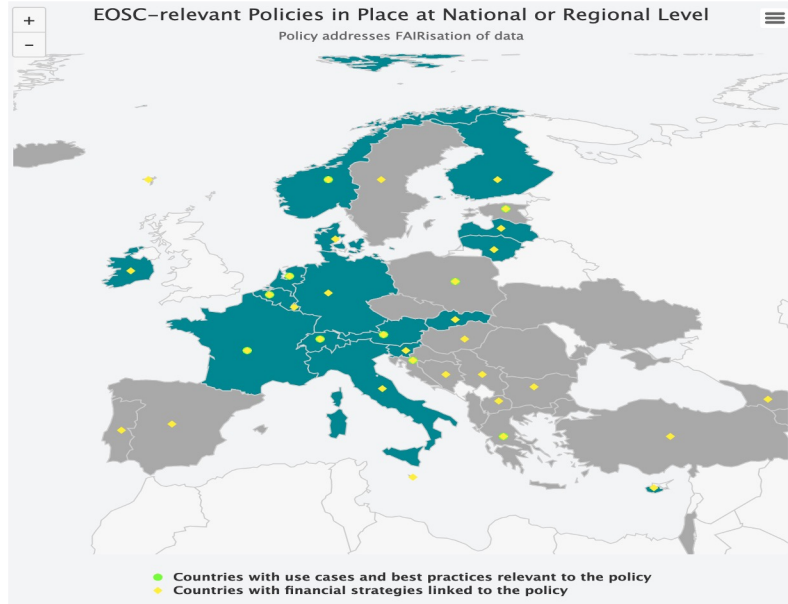
- (Meta)data are richly described with a plurality of accurate and relevant attributes
- (Meta)data are released with a clear and accessible data usage licence
- (Meta)data are associated with a detailed provenance
- (Meta)data meet domain-relevant community standards

[Wilkinson & al \(2016\)](#) | [Hansen & al \(2018\)](#)

[@gtoneill](#)

gareth.oneill@technopolis-group.com

FAIR and Open Data Policies



[EOSS Observatory](#)

[@gtoneill](#)

gareth.oneill@technopolis-group.com

European Open Science Cloud (EOSC)



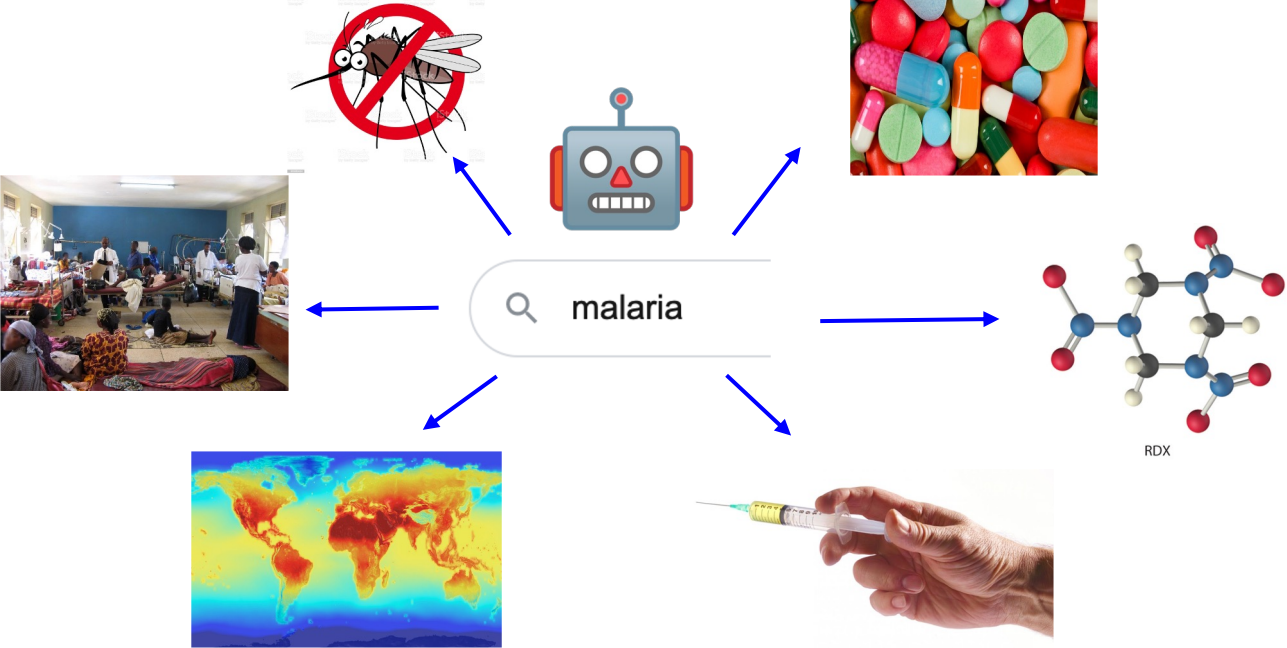
- virtual space for research
- support for Open Science
- web of FAIR & open data
- with services to use data
- cross-disciplinary research

[EOSC](#) | [EOSC Association](#) | [EOSC Future](#)

[@gtoneill](#)

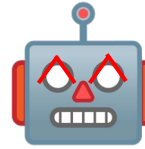
gareth.oneill@technopolis-group.com

Preempting Future Discoveries



[@gtoneill](https://twitter.com/gtoneill)
gareth.oneill@technopolis-group.com

Preempting Future Issues



[@gtoneill](https://twitter.com/gtoneill)

gareth.oneill@technopolis-group.com



The Future of FAIR and Open Data

Thank you!

[@gtoneill](https://twitter.com/gtoneill)
gareth.oneill@technopolis-group.com

Please join us for more



Webinar 1

Your Institution's Research Data Deserves a Great Home: Publishing, archiving and preserving data

Guest speakers:

- [DataCite](#)
- [Erasmus University Rotterdam](#)
- [ETH Zurich](#)



Webinar 2 today

Needle in a Haystack: Where is my Institution's Data? Monitor & report research data

Guest speakers:

- [The University of Manchester](#)
- [University of Groningen](#)



Webinar 3 on 23 March 2023, 14:00 CET

RDM is a Team Sport, Not a Single Player Mission: Best national practices and future outlook

Guest speakers:

- [Swedish National Data Service](#)
- [Technopolis Group](#)

Sign up here: <https://bit.ly/RDMWeb1>



Where is your research data? How to find your institution's research data and monitor compliance?

Join our webinar
'Research data served fresh daily - How our customers find their research data in external subject repositories
on 2 June 2023 11:00 CTE

Please register here: bit.ly/3mKhyEk



How to organize the research data of my institute with Elsevier?

Floortje Flippo

Regional Director **Research Intelligence Europe**

Elsevier

f.flippo@elsevier.com

