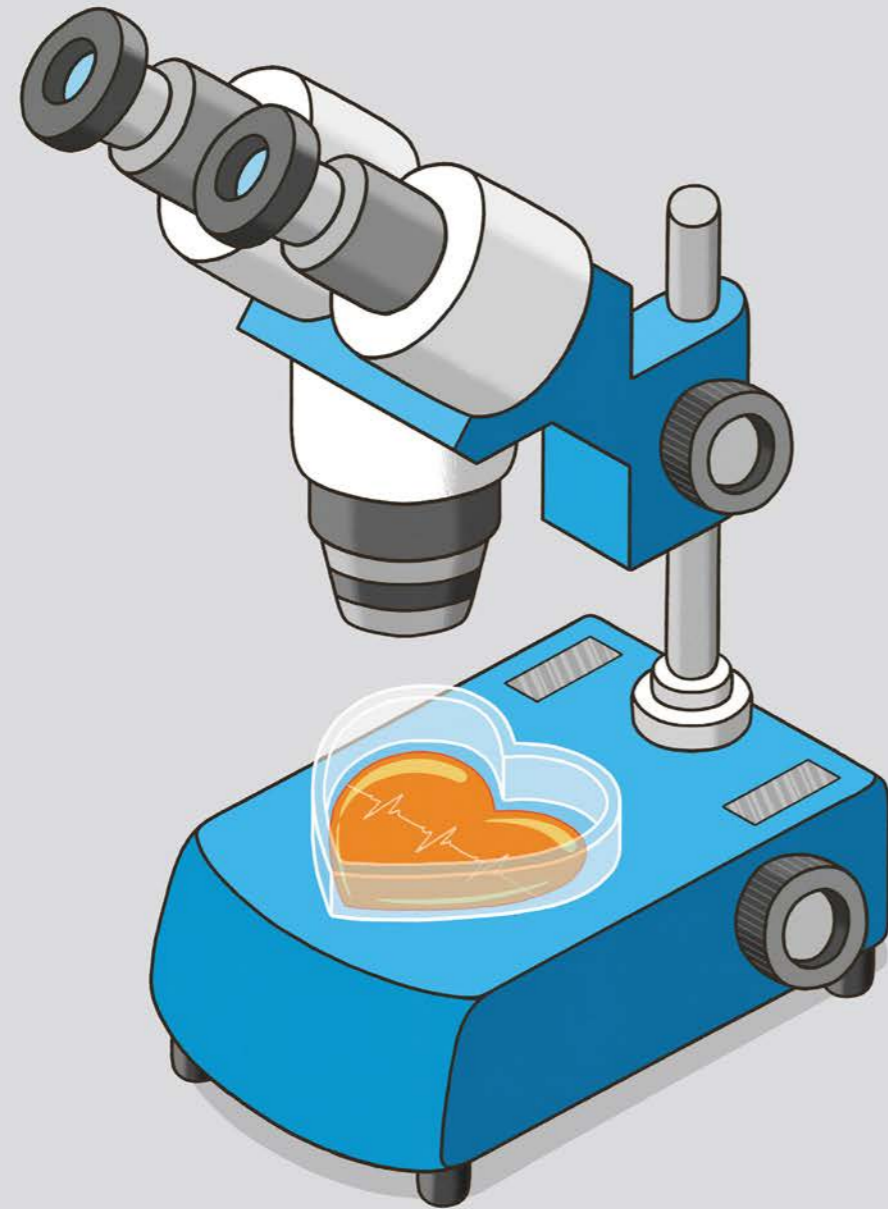


Elsevier at a glance



ELSEVIER

Because informed decisions lead to better outcomes



Every day, research and health professionals dedicate themselves to improving outcomes for communities, patients and society at large. The massive societal gains in life expectancy, poverty reduction and global health that we have seen in the past century have been possible in part because of an exponential explosion of information, data and technological advancements.

While the proliferation of information brings opportunity, it also brings challenges. This sea of information is difficult to navigate, and it's tougher still to ensure the credibility of data when at times it's hard to know what to trust.

As a global leader in information and analytics, Elsevier helps researchers and healthcare professionals advance science and improve health outcomes for the benefit of society.

We do this by facilitating insights and critical decision-making for customers across the global research and health ecosystems.

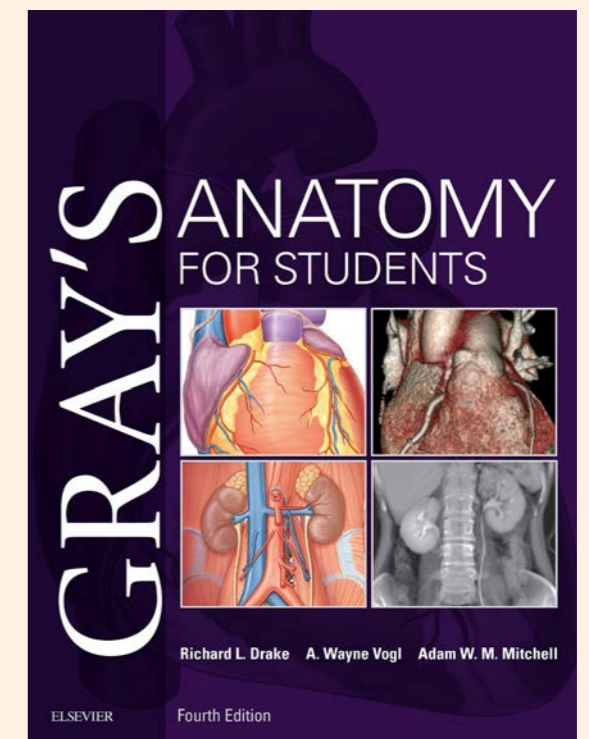
In everything we publish, we uphold the highest standards of quality and integrity at scale to ensure value to our customers. We bring that same rigor to our analytical solutions for researchers, health professionals, institutions and funders.

Trusted for over 140 years

Since the year 2000, more than 99% of the Nobel Laureates in science have published in Elsevier journals.

We have supported the work of our research and health partners for more than 140 years. Growing from our roots in publishing, we offer knowledge and valuable analytics that help our users make breakthroughs and drive societal progress.

Researchers and healthcare professionals rely on our 2,700+ digitized journals, including seminal publications such as *The Lancet*, founded in 1823, and *Cell*, one of the flagship titles of Cell Press; our 43,000+ eBook titles; and iconic reference works such as *Gray's Anatomy*.



Fast facts

Elsevier serves the global research community, publishing over 600,000 peer-reviewed articles in 2021 — 89% more than a decade ago.

600,000+

peer-reviewed articles

500+

institutions using Sherpath

[Sherpath](#) provides highly focused, personalized learning paths at over 500 institutions, supporting more than 200,000 course enrollments in nursing and health education.

~18%

global research output

Elsevier's article output accounts for about 18% of global research output while garnering approximately 28% share of citations, demonstrating Elsevier's commitment to delivering research quality significantly ahead of the industry average.

5k+

Institutions access ClinicalKey

Over 90 countries access [ClinicalKey®](#), our flagship clinical reference platform, at over 5,000 institutions in more than 90 countries and territories.

175m+

downloads of COVID content

In 2021, Elsevier's free [Novel Coronavirus Information Center](#) saw over 175 million downloads. And Elsevier was awarded the Digital Health Award for its COVID-19 Healthcare Hub in the category of Web-based Digital Health.

18m+

monthly visitors

[ScienceDirect](#), the world's largest database dedicated to peer-reviewed primary scientific and medical research, hosts more than 19 million pieces of content from over 4,400 journals and over 43,000 eBooks and has more than 18 million monthly visitors.

2k+

cancer physicians served

[ClinicalPath™](#) provides clinical pathways delivering personalized, evidence-based oncology guidance at the point of care. ClinicalPath's network in North America serves more than 2,000 cancer physicians, 54 practices in 31 states (16 academic medical centers, 29 hospital systems and 9 community practices). ClinicalPath won the 2021 MedTech Breakthrough Award for Best Computerized Decision Support Solution for the third consecutive year.

2m+

Complete Anatomy users

Over 2 million registered users in more than 300 medical schools and universities worldwide are using [Complete Anatomy](#), the world's most advanced 3D anatomy education platform.

88%

digital products

88% of Elsevier's revenue comes from digital products.

10k+

institutions using Research4Life

Elsevier is a founding and driving partner of [Research4Life](#), a UN partnership initiative providing free or low-cost access to research for publicly funded institutions in the world's least resourced countries. Over 10,000 institutions in 125 countries participate.

1.6b+

articles downloaded

Over 1.6 billion articles were downloaded by researchers in 2021.

94%

of the top 100 health systems

Most of the top 100 health systems (ranked by bed count) use at least one of Elsevier's [Clinical Solutions](#).

The future is open, and we are here to support you

We believe in [open science](#) and [open access](#) to knowledge. We have created a wide-ranging portfolio of open access publishing options for authors and researchers across all subject areas. Nearly all of our journals already offer immediate open access options, and we are committed to finding a sustainable path so we can extend this to all of our titles.



600+

institutions supported

We support more than 600 institutions around the globe in building and managing their own open access publishing programs through Digital Commons, a secure, cloud-hosted infrastructure. More than 5 million open access works are surfaced via Digital Commons and have been shared over a billion times.

17.5m

annual downloads

We encourage researchers to share their work prior to peer-review on any platform of their choice. One of them is [SSRN](#), a free preprint-sharing server for all researchers, where over 500,000 authors have uploaded more than 950,000 papers across 60+ disciplines, generating 17.5 million annual downloads.

11m+

articles tagged “open access”

We make it easy to find open access articles. Through our partnership with [Impactstory](#), over 11 million documents are now tagged as gold, hybrid or bronze “open access” in [Scopus](#).

We continue to evolve, explore and create new OA options to fit our authors’ needs. This includes experimenting with open access mirror journals as well as the possibility to publish alternative article types such as data, methods, software and hardware in journals dedicated to these research elements.

We work closely with funders and institutions around the world, supporting researchers through agreements such as those in Qatar, Sweden, Ireland, the US and others to make articles open access. We also invest in improving our systems and processes to make authors aware of these agreements and of their compliant options during their publishing journey.

119k+

open access articles published

In 2021, Elsevier published over 119,000 open access articles, a year-on-year growth rate of over 46%.

>46%

year-on-year growth rate for open access articles

We are investing in capacity-building to remain one of the fastest-growing open access publishers. We published over 119,000 open access articles in 2021, a year-on-year growth rate of over 46%.

2.7+

journals that enable open access

As one of the fastest-growing open access publishers in the world, we enable nearly all of our 2,700+ journals to enable open access publishing.

>90%

journals offering open access option

In 2020, over 90% of our journals offered the option to publish open access and make an article permanently available immediately at a price below industry average while delivering above-average quality.

600+

gold open access journals

In 2021, we launched 105 new journals, of which 95% were gold open access, growing the Elsevier portfolio to over 600 gold open access journals.

Our customers

We are committed to quality and innovation to improve the value we deliver to researchers, research leaders, librarians, funders, healthcare professionals and educators in an open, inclusive and collaborative manner.

Researchers

We support academic researchers as they seek to break ground with their discoveries. We are honored to convene and support expert editorial teams who, in turn, ensure the quality of research. We enhance and amplify the work of researchers and help them stay on top of the never-ending flow of information in their fields and related fields. And we provide insights that help researchers find funding; identify international, interdisciplinary and commercial collaborators; and manage data to ensure that their work is reproducible.

Our 2,700+ journals enhance the record of scientific knowledge by applying high standards of quality in everything they publish and ensuring trusted research can be accessed, shared and built upon by others. In collaboration with 29,000 editors and 1.3 million expert reviewers around the world, our journals are the foremost publications in their field, including flagship families of journals such as Cell Press and The Lancet.

Librarians

We support librarians in their role as connectors and disseminators of knowledge to advance their institutional mission. We provide options to publish and showcase their collections and share them openly.

[Digital Commons](#) helps academic libraries showcase and share their institutions' research via institutional repositories for greater impact.

Research leaders & funders

We help research leaders and funders understand their performance and the research landscape, identify researchers and cross-sector partners to advance their programs, find funding opportunities and manage their research enterprise.

We provide advanced technology and analytics to filter, extract and learn from vast datasets. Elsevier brings together its rich content with analytics and technology, utilizing advanced machine learning and artificial intelligence to improve productivity and outcomes and enable scientific and research insights and benchmarking.

In 2017, Shanghai Jiao Tong University held a respectable rank in the 201-250 band of the Times Higher Education World University Rankings. In the five years since, the university has leapt into the world's top 100 in both THE Rankings and ShanghaiRanking's Academic Ranking of World Universities, and it's in the top 50 in the QS World University Rankings.

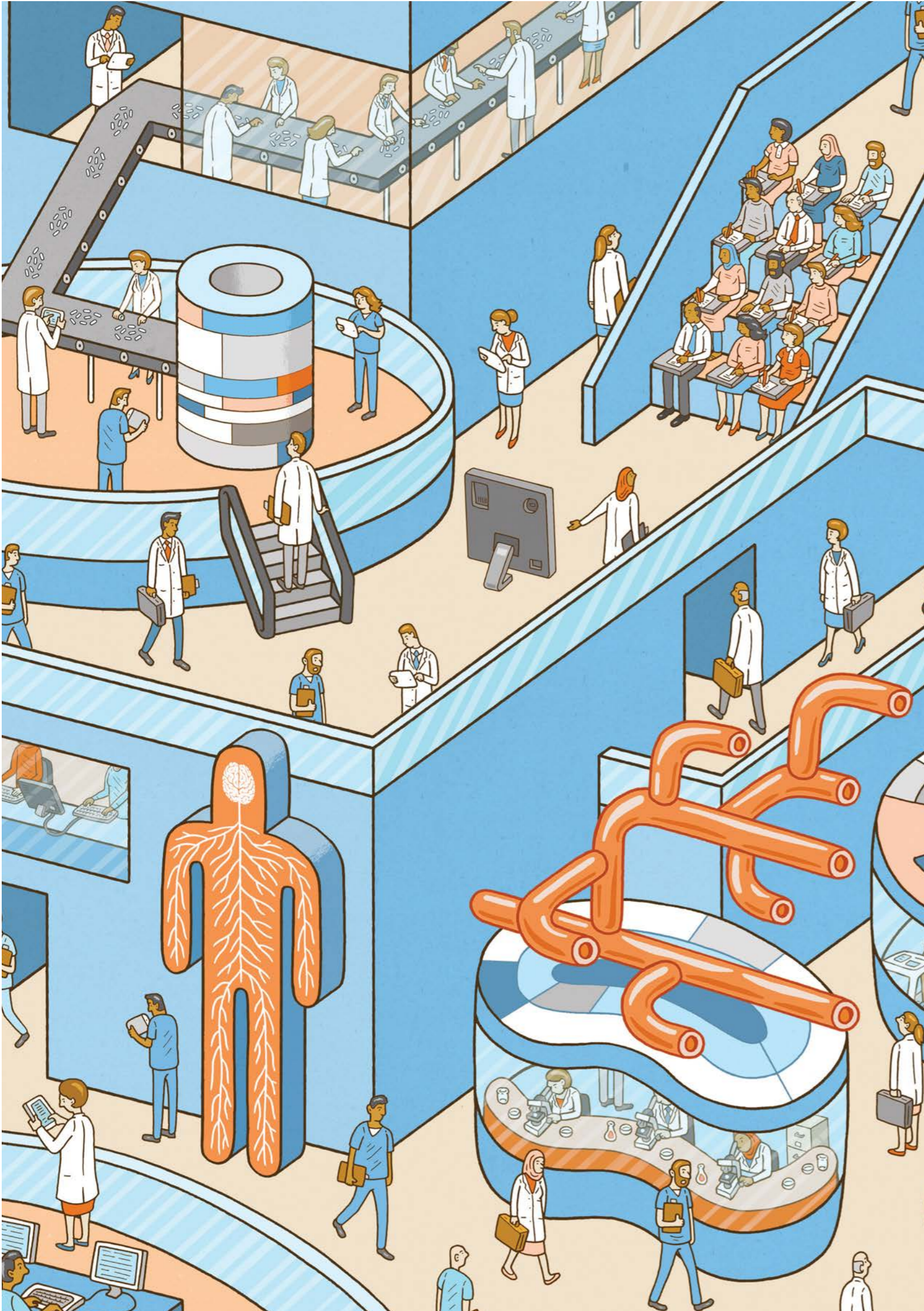
As Library Director, Prof Xinwan Li strategically supports the university's "Double First Class" ambition, a designation established in 2015 by China's Ministry of Education to develop elite universities and their individual faculty departments into world-class institutions by the end of 2050. The library supports the university strategy by harnessing bibliometric insights and analysis from key databases, such as Elsevier's Scopus — the world's largest abstract and citation database.



Shanghai Jiao Tong University has developed rapidly and significantly. We clearly see the benefits of collaboration between Shanghai Jiao Tong University Library, with its edge in analytics, and Elsevier's resource strength.

Prof Xinwan Li, PhD
Library Director
Shanghai Jiao Tong University

elsevier.com/connect/supporting-sjtu



Health professionals

We help physicians, nurses and other clinicians improve the lives of patients. We provide evidence-based tools to help them make faster, better decisions at the point of care and improve outcomes for patients. Our content and digital tools to help them manage their work more efficiently and give patients a consistent quality of care.

Elsevier is developing clinical decision support applications that utilize cognitive technologies to map patient and claims data sets and large image and text content repositories to enhance the delivery of the right content in the right setting to the right care providers. This will help health professionals make more accurate diagnoses, ensure appropriate care delivery and ultimately save more lives.

R&D professionals

We support corporate R&D professionals with information, data and analytics that allow them to save time, make better decisions and innovate at the speed and scale society expects of them.

The machine learning capability of [Reaxys](#) supports the chemistry of drug discovery and materials innovation for 399 pharma innovators, 234 chemical companies and 794 universities.

Health educators and students

We work with health educators to prepare today's students for successful careers in medicine, nursing and health professions, providing world-class content and innovative teaching and learning tools that improve educational outcomes and help prepare students for practice.

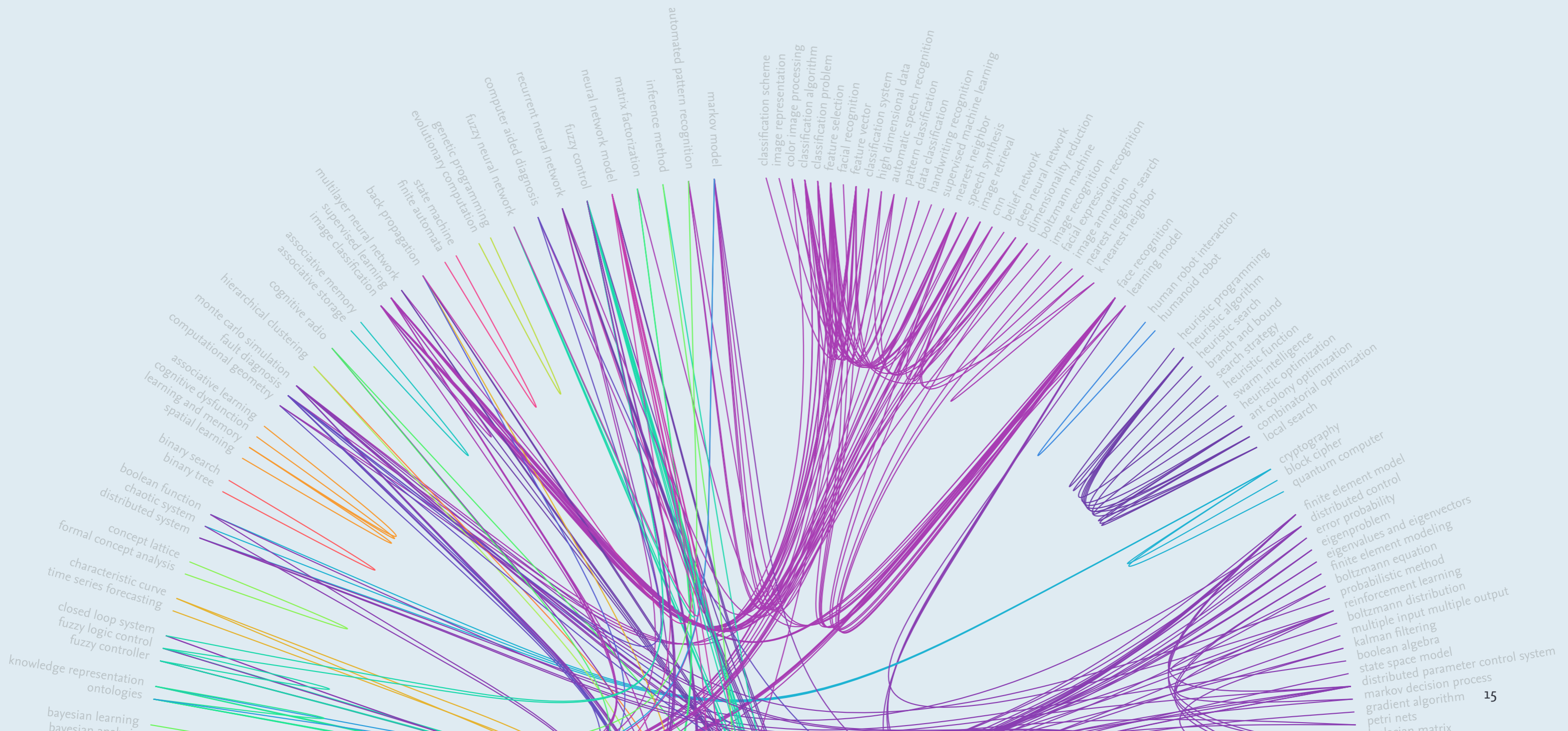
During the pandemic and virtual learning, [HESI](#) exams were administered over 600,000 times, largely through remote proctoring.

Enriched data. Enhanced analytics. Evidence-led decisions.

Elsevier is applying advanced machine learning and natural language processing (NLP) techniques to help researchers, engineers and clinicians perform their work even more effectively.

Elsevier creates tools that put users in control, helping them work faster, manage complexity and free up time to focus on their goals and improve outcomes in the areas of [R&D Solutions](#), [Clinical Solutions](#), [Research Platforms](#), [Research Intelligence](#) and [Education](#).

Cord graph: Artificial intelligence research clusters.
Learn more on [Elsevier's AI Resource Center](#)



Knovel®

Knovel is a decision support platform that empowers engineering professionals to gain greater operational efficiency, offset environment impact, and release products faster. With information expertly sourced from 160+ partners, Knovel helps with tasks ranging from selecting material to adopting operational best practices in chemical, energy and other engineering industries. The new Knovel Corrosion tool helps organizations safeguard assets, manage corrosion phenomena, and mitigate the economic and sustainability impact of corrosion.

Reaxys®

Reaxys is a chemistry research and education database with chemical substance properties and reaction and medicinal chemistry data for both bench chemists and data scientists supporting drug discovery and chemical R&D. It's used in the pharmaceutical and chemical industries and in the academic and government sectors. During 2021, Reaxys increased its content with 42 million key substances in 30 million documents from 16,000 journal titles and 107 patent offices. In addition, Elsevier developed an award-winning Predictive Retrosynthesis module leveraging cutting-edge AI and machine learning technologies to help researchers accelerate synthetic chemistry workflows in drug discovery.

SSRN®

SSRN is an open access online preprint community where researchers post early-stage research prior to publication in academic journals. Scopus Author Profiles now allow the research community to use preprints to provide an early view into the focus areas of a researcher. SSRN has over 3 million monthly visitors and over 1 million paper abstracts across 70+ disciplines from more than 750,000 authors. It has extracted over 22.9 million references and matched over 27.7 million references and matched over 1.8 million citations from its full-text database of early stage research.

Sherpath®

Sherpath, an adaptive teaching and learning solution for nursing and health education, provides highly focused, personalized learning paths at over 500 institutions, supporting more than 200,000 course enrollments.

ScienceDirect®

ScienceDirect, the world's largest platform dedicated to peer-reviewed primary scientific and medical research, hosts over 19 million pieces of content from over 4,400 journals and 43,000 eBooks and receives more than 18 million visitors a month. Elsevier has continued to invest in ScienceDirect and integrate new remote access methods to provide researchers with the ability to easily use its tools when working from home, safe in the knowledge that they are doing so securely and that their privacy and data are protected.

Complete Anatomy

Complete Anatomy is the world's most advanced 3D anatomy education platform, featuring groundbreaking technology and content and unique collaboration and learning tools. In 2021, Complete Anatomy surpassed 2 million registered users and was used in more than 300 medical schools and universities worldwide.

Pure

Pure brings information from all your data sources onto a single, intelligent and secure platform, unlocking organized insights to elevate your research potential. Its fully interconnected data model empowers you to gain a comprehensive overview of all your research activities, collaborate beyond borders, maximize funding opportunities, promote open science activities and showcase the impact of your institution's achievements to the world.

Mendeley®

Mendeley helps more than 15 million users worldwide, from undergraduates to professionals, organize, write and collaborate. Mendeley Data enables researchers to make their research data publicly available by providing an open research data repository.

Shadow Health®

Shadow Health utilizes cutting-edge simulations to enable learners to practice and apply their clinical reasoning skills through life-like interactions with a diverse range of virtual patients. Currently, Shadow Health products are used in more than 900 institutions across North America.

ClinicalPath™

ClinicalPath (formerly Via Oncology) provides clinical pathways delivering personalized, evidence-based oncology guidance at the point of care. ClinicalPath's network in North America serves more than 2,000 cancer physicians, 52 practices in 32 states, 16 academic medical centers, 27 hospital systems and 10 community practices. ClinicalPath won the 2021 MedTech Breakthrough Award for Best Computerized Decision Support Solution for the third consecutive year.

Osmosis®

Elsevier acquired medical learning platform Osmosis in 2021. Osmosis has over 2 million registered learners, 2.3 million YouTube subscribers, 8 million+ website visitors and 170+ institutional partnerships, including marquee clients such as New York University, Imperial College London, and the CDC.

Arezzo®

For healthcare professionals, Elsevier's clinical solutions include **Arezzo** for interactive patient education and care planning. An active clinical decision support engine integrated with clinical care systems, Arezzo matches evidence-based guidelines with patient and disease information and dynamically evaluates best-practice treatment options.

SciVal®

SciVal provides insights into the research performance of over 20,000 research institutions. This decision tool helps academic and government research administrators and leaders to establish, execute and evaluate research strategies by leveraging bibliometric data from Scopus along with other data types, such as patent citations and usage data.

ClinicalKey®

Elsevier's flagship clinical reference platform, **ClinicalKey**, gives physicians, nurses, medical students and educators access to leading Elsevier and third-party reference and evidence-based medical content, including over 1,300 clinical overviews, which provide quick answers and summaries, and more than 5.3 million images and over 80,000 medical and surgical videos in a single, fully integrated site. ClinicalKey is accessed by over 5,000 institutions in 90 countries and territories. ClinicalKey Student is used by more than 290,000 students in over 280 medical and 260 nursing schools.

Scopus®

Scopus uniquely combines a comprehensive curated abstract and citation database with enriched data and links to scholarly content, with over 84 million records across over 27,000 journals from more than 7,000 publishers. Scopus enables researchers to track, analyze and visualize the world's research output.

HESI®

A comprehensive assessment solution, **HESI** offers valid and reliable exams, as well as proven practice and review products that work together seamlessly to help students and programs achieve even greater levels of success by preparing for and predicting licensure exam success. During the pandemic and virtual learning, HESI exams were administered over 600K times, largely through remote proctoring.

Partnering for a better world

Although much progress has been made, our world still faces grand challenges: tackling climate change; ensuring food and water security; helping more people live longer, healthier lives; reducing social inequality while also driving economic growth. It is our goal to help accelerate the progress of researchers and health professionals through innovation in partnership with the communities we serve — and to play our part in building a better future for research, health and people everywhere.

Kumsal Bayazit, CEO of Elsevier is co-chair of the Inclusion & Diversity Advisory Board



Partnering to advance inclusion, diversity and equity in science, research and healthcare

Inequities in academic research are manifested in many ways, from the low proportion of women who are tenured professors, to the low rates of grants awarded to women and researchers who are members of underrepresented racial and ethnic groups, to the lack of appropriate sex- and gender-based analysis in research studies.

As a global leader in research information & analytics and scientific publishing, Elsevier can make an impact in key areas to enhance diversity and inclusion in research across gender, race & ethnicity, and geographical dimensions and ensure that research is conducted and reported in the most equitable and inclusive manner.

With the [Elsevier Foundation](#) and our external [Inclusion & Diversity Advisory Board](#), we work in partnership with diverse stakeholders worldwide to advance inclusion, diversity and equity in science, research and healthcare.

Supporting the fight against COVID-19

To support the extraordinary efforts of the health and research communities combating coronavirus, Elsevier opened a [range of free resources](#) beginning in late January 2020, including textbooks, evidence-based clinical guidance, and more than 63,000 research articles to read, download and data mine.

In 2021, Elsevier's free [Novel Coronavirus Information Center](#) saw over 175 million downloads. Elsevier was awarded the Digital Health Award for its COVID-19 Healthcare Hub in the category of Web-based Digital Health.

With over 200 million downloads in 2020, we also made this corpus available to available to PubMed Central, the archive of biomedical and life science at the US National Institutes of Health's National Library of Medicine, and other publicly funded repositories globally, such as the WHO COVID-19 database, for as long as needed while the public health emergency is ongoing.

Together we resolve to:

- Work with research leaders, funding bodies and higher education institutions to drive gender and racial & ethnic equity across the STEM academic career path.
- Work with academics, publishers and funders to promote greater gender and racial & ethnic diversity and inclusion as well as geographic representation on editorial boards, in peer review and at scientific conferences while supporting publication and inclusive participation in research.
- Encourage enhanced sex- and gender-based analysis and reporting in research studies.
- Work with our network of stakeholders to influence and address inequality in the communities we serve.
- Publish an annual report highlighting areas of progress and summarizing the actions of the I&D Advisory Board.
- Promote inclusion and diversity best practices to help foster diverse and inclusive future generations of STEM graduates.

Programs we support

Research4Life

As a founding partner and leading contributor to [Research4Life](#), a unique UN-publisher partnership, Elsevier provides 20% of the 154,000 peer reviewed resources, encompassing about 4,500 journals and 26,700 eBooks. In 2021, there were over 1.1 million Research4Life downloads from [ScienceDirect](#).

Partnerships to drive equality in health and research

In 2021, the [Elsevier Foundation](#) worked closely with Elsevier's Race & Ethnicity leads and our African Ancestry Network to develop a new portfolio of partnerships, offering \$200,000 in grants to tackle health disparities among black and ethnic minority communities, scholarships and tech programs for girls. The Elsevier Foundation has also launched new partnerships focusing on gender equality and climate change, supporting better integration of sex and gender dimensions into SDGs research.

OWSD-Elsevier Foundation Awards

Since 2013, the [OWSD-Elsevier Foundation Awards for Early-Career Women Scientists in the Developing World](#) has awarded 51 scientists from 24 countries, not only recognizing their impressive work but providing professional visibility and empowering them to be role models. We are committed to tackling the challenges of our time, such as the climate emergency, health disparities, and food and energy insecurity in a way that benefits all society. Discover more on our new [Inclusion & Diversity Hub](#).

Sense About Science (SAS)

Since 2006, Elsevier has partnered with [Sense About Science \(SAS\)](#), an independent charitable trust championing the critical need for evidence-based science to ensure public trust and dialogue. Our recent collaborations include the study [Quality, Trust and Peer Review](#) and [Data Science: A Guide for Society](#).



Since 2016, [Amref Health Africa](#) and the [Elsevier Foundation](#) have partnered to implement mobile learning solutions for professional nursing development across East Africa.

Partnerships

Elsevier collaborates with over 39 funding bodies to help authors be compliant with open access policies, and we have an increasing number of commercial agreements that actively support open access. We also work with researchers at universities, hospitals and government institutions in about 80 research projects annually.

We support public engagement and science advocacy through programs such as Sense About Science, the Emergency Access Initiative, Research4Life, Access2Research and Atlas.

Since 2011, we have partnered with the Gender Summit, an action-oriented platform to advance both women scientists and the gender dimension in science.

The Green Team aims to raise awareness of our environmental impact and improve business strategies for a more sustainable world. The Elsevier Women's Network highlights the talent women bring to the business and promotes their professional progress through advocacy and education.



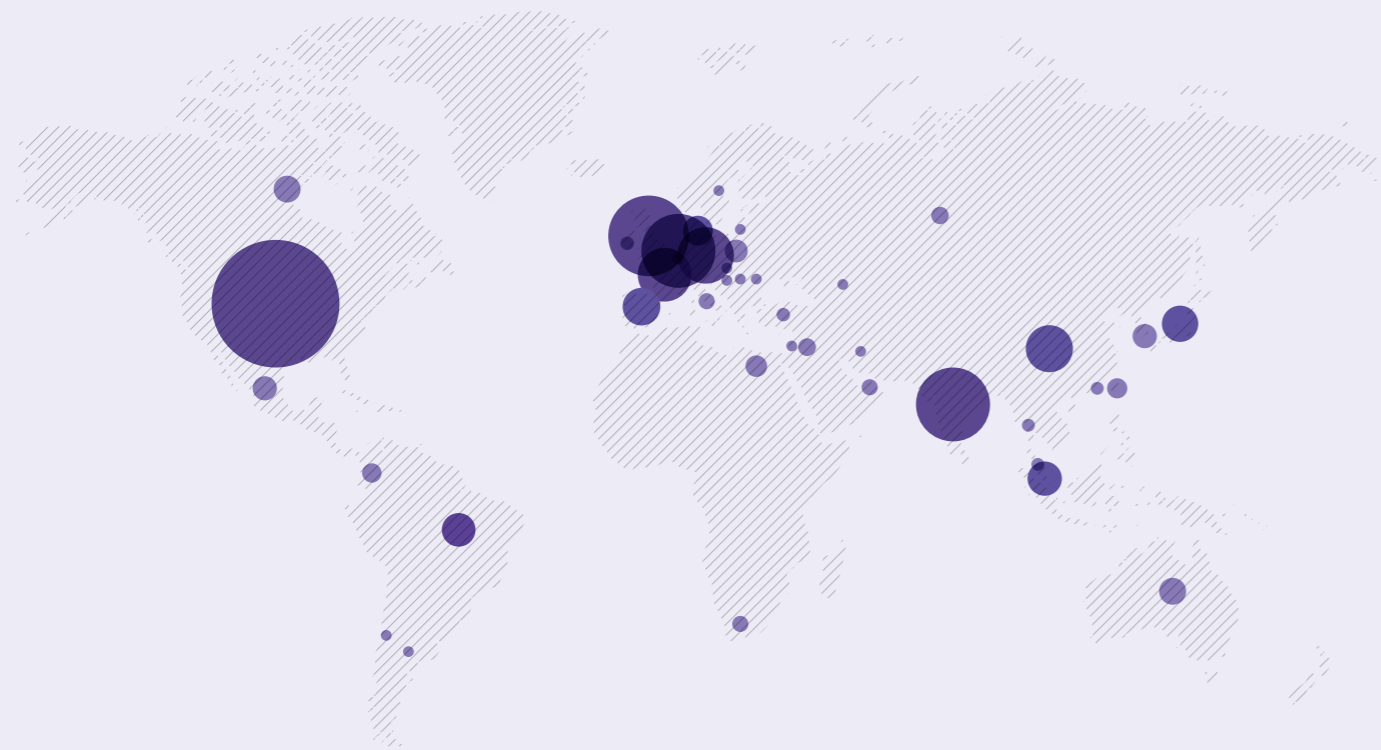
Elsevier is where you are to support you

Elsevier employs 8,700 people including 1,922 technologists around the world. Many of us began our careers in research and healthcare. We share the community's belief in the power of science, research and medicine.

We are a business with a unique perspective: At the intersection of analysis and content; in the place where information becomes knowledge; at the point where research, healthcare, and technology come together. Discover Elsevier.

Interested in working at Elsevier?

[Explore careers](#)



Employee/country:

- 1 - 100
- 101 - 200
- > 200

Elsevier is a global business, headquartered in Amsterdam with offices worldwide.

elsevier.com/locations

Americas

Brazil
Rio de Janeiro
São Paulo

Canada
Toronto

Mexico
Mexico, D.F.

United States
Atlanta
Cambridge
Grand Rapids
Houston
Laguna Hills
Miamisburg
New York
Philadelphia
Rockville
Salt Lake City
San Diego
St. Louis
Tampa
Woodbury

EMEA

Denmark
Aalborg

Egypt
Cairo

France
Paris

Germany
Berlin
Frankfurt
Munich

Ireland
Shannon

Jordan
Amman

Netherlands
Amsterdam

Poland
Warsaw

Russia
Moscow

South Africa
Somerset West

Spain
Barcelona
Madrid

Turkey
Istanbul

United Arab Emirates
Dubai

United Kingdom
Cambridge
Devon
Edinburgh
London
Oxford

APAC

Australia
Melbourne
Sydney

China
Beijing
Hong Kong
Shanghai
Shenzhen
Taipei

India
Chennai
Gurgaon
Kolkata
Mumbai

Japan
Osaka
Tokyo

Malaysia
Kuala Lumpur

Philippines
Quezon City

Singapore

South Korea
Seoul

Thailand
Bangkok



ELSEVIER

Elsevier is a registered trademark of Elsevier BV. RELX and the RE symbol are trademarks of RELX Group plc, used under license. RELX is a global provider of information-based analytics and decision tools for professional and business customers. © 2022 Elsevier BV