

Research Intelligence

SciVal

Build your views on
the world's research

SciVal – Build your views on the world’s research

SciVal offers quick, easy access to the research performance of over 12,000 research institutions and 230 nations and regions.

A ready-to-use solution with unparalleled power and flexibility, SciVal enables you to navigate the world of research and devise an optimal plan to drive and analyze your performance.

See what SciVal can do for you

Constantly evolving and ever more challenging, today’s R&D landscape requires research managers to ensure satisfying outcomes, and devise better ways to measure the quality and impact of research projects.

To meet these challenges, SciVal offers an integrated modular platform that allows you to view and compare any desired research entities such as institutions, countries, self-defined research topics and researcher groups.

SciVal is based on output and usage data from Scopus, the world’s largest abstract and citation database for peer-reviewed publications. SciVal uses Scopus data from 1996 to current date, which covers:



48 million
publication records



22,000+
journals



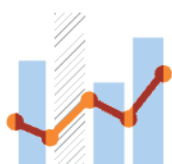
5,000+
publishers



Visualize research performance

Access comprehensive research performance summaries of any desired research entities, identify their unique research strengths and multidisciplinary research areas.

- Retrieve at-a-glance, standardized reports instantly
- Get a high-level overview of the research performance of your institution, other institutions, countries and groups of researchers.



Benchmark your progress

View the relative performance of your institution, specific departments, research groups or selection of researchers.

- Perform in-depth analyses to meet your specific objectives by selecting any combination of subject areas and metrics
- Identify your relative strengths and weaknesses to optimize your strategy



Create customized Reports

Create analyses from across the modules, combine a selection of analyses to create uniquely tailored Reports. Save your most utilized reports in SciVal to export and share whenever you need it.

- Edit the analyses, adding and removing entities, changing the year range and/or selecting more metrics and save
- Share Reports with other SciVal users within your Institution



Develop collaborative partnerships

Identify and analyze existing and potential collaboration opportunities based on publication output and citation impact.

- Explore your institution's current and prospective partnerships via an interactive map
- Identify your top collaborative institutions and co-authorship by drilling into specific subject areas and self-defined research topics



Analyze research trends

Analyze the research trends of any Research Area with citation and usage data, to discover the top performers and rising stars.

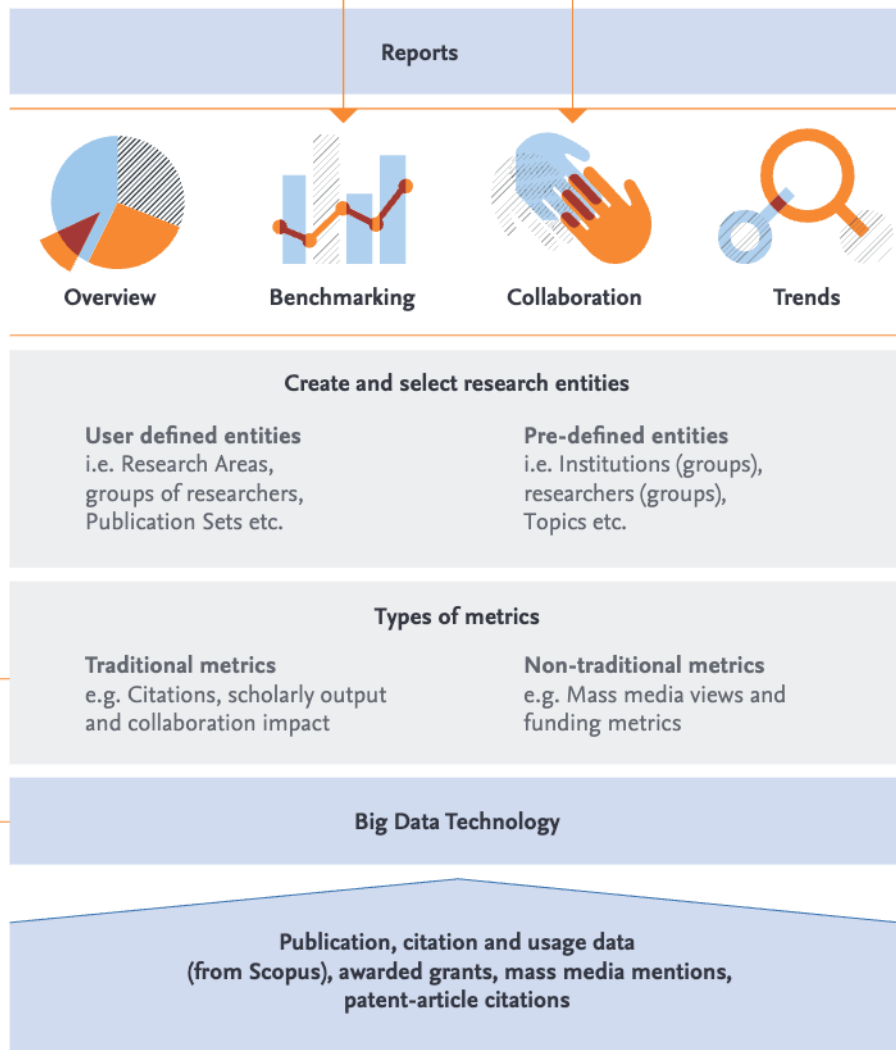
- View the overall performance of a Research Area, then dig deeper into the activity and impact of the institutions, countries, authors and journals involved and adjust your research strategy accordingly.
- Usage information complements citation data to give a more complete picture of research performance.

SciVal at a glance

SciVal helps you assess your institution's research performance from a variety of perspectives in order to establish, execute and evaluate strategies based on reliable evidence. Using advanced data analytics, SciVal allows you to instantly process an enormous amount of data, 48 million publication records from over 22,000 journals of over 5,000 publishers worldwide, and provides access to more than 280 trillion metric values to generate powerful data visualizations on-demand, in seconds.

Visualize research performance from multiple perspectives using SciVal's easy-to-use interface.

Analyze your current research collaborations, which researchers are working together locally, nationally or internationally and the impact and output of those relationships. Or uncover potential partners for future collaborations.



Select and combine any set of metrics to measure an entity's productivity, citation impact, collaboration, subject disciplinarity and more.

View and analyze big sets of data, fast, and generate graphs and tables on-demand.

Get access to comprehensive publication data drawn from Scopus®, the largest abstract and citation database of peer reviewed literature. Incorporate COUNTER compliant usage data from Scopus, patent-article citations, funding awarded grants & mass media mentions into your analysis to reflect the engagement of the whole research community.



More about...



Research Areas and pre-defined entities

SciVal offers flexibility for users to create their own Research Area, representing a field of research defined by you. Several groups of institutions and countries are made available such as EU, US states, German Bundesländer and more.



Metrics

SciVal offers a broad spectrum of industry-accepted and easy-to-interpret metrics including Snowball Metrics which are defined and agreed by higher education institutions for institutional strategic decision making through benchmarking.

About Snowball Metrics: snowballmetrics.com

Metrics in SciVal help the institutions to measure an institution's or a country's productivity, citation impact, collaboration, subject disciplinarity and more.

For further information about the metrics available in SciVal and how to use them together please see [the Research Metrics Guidebook](#)

SciVal

SciVal offers quick, easy access to the research performance of over 12,000 research institutions and 230 nations and regions—so you can visualize research performance, benchmark relative to peers, develop collaborative partnerships and analyze research trends.

For more information about SciVal,
visit www.elsevier.com/scival

Elsevier offices

ASIA AND AUSTRALIA
Tel: + 65 6349 0222

JAPAN
Tel: + 81 3 5561 5034

KOREA AND TAIWAN
Tel: +82 2 6714 3000

EUROPE, MIDDLE EAST AND AFRICA
Tel: +31 20 485 3767

NORTH AMERICA, CENTRAL AMERICA AND CANADA
Tel: +1 888 615 4500

SOUTH AMERICA
Tel: +55 21 3970 9300

