



Combine funding data and insights with local knowledge to connect experts and support research strategy

- Inform strategic planning and execution of research strategies with funding landscape intelligence and benchmarking
- Discover and profile key contributors to fields of interest and identify researchers who have received funding
- Connect leading researchers across disciplines and help them identify funding bodies investing in their fields for targeted funding bids
- Identify and profile funding bodies active and investing in research areas of strategic interest
- Support partnership, collaboration, recruitment and investment decisions around research centers and institutes
- Profile and understand research fields where your peers are being funded and by which funding bodies

Grants dashboard

2011 to 2020All Award TypesAll Award ValuesFunding Bodies covered

Legend: WorldAthena University

Heatmap metric valuelowesthighest metric value

Entity	Annualized Awards Value (USD)		Awards Count		Median amount per Award (USD)	
	World	Athena University	World	Athena University	World	Athena University
Electric Power Transmission Networks; Wind Power; Electric Power Distribution	3,137,724,724	70,304,647	2,871	11	105,230	5,391,337
Climate Models; Model; Rainfall	3,393,008,786	15,966,575	7,775	4	150,938	3,768,681
Algorithms; Computer Vision; Models	1,288,458,027	14,556,016	6,886	5	72,920	1,015,967
Hybrid Vehicles; Fuel Economy; Electric Vehicles	2,188,343,012	12,726,768	660	1	150,813	12,726,769
Aging	15,446,875,270	11,847,862	40,078	2	251,509	7,182,626
COVID-19; SARS-CoV-2; Coronavirus	2,058,707,592	3,595,760	2,639	2	259,705	7,191,520

Define your priority research fields to get a comprehensive view of external awarded grants and funding body focus areas



Helping universities identify and understand:

The funding trends in our priority research areas

- Who has received funding in these areas in the recent past, internally and externally?
- Which funding bodies are active in these areas?

The research areas with the largest funding levels

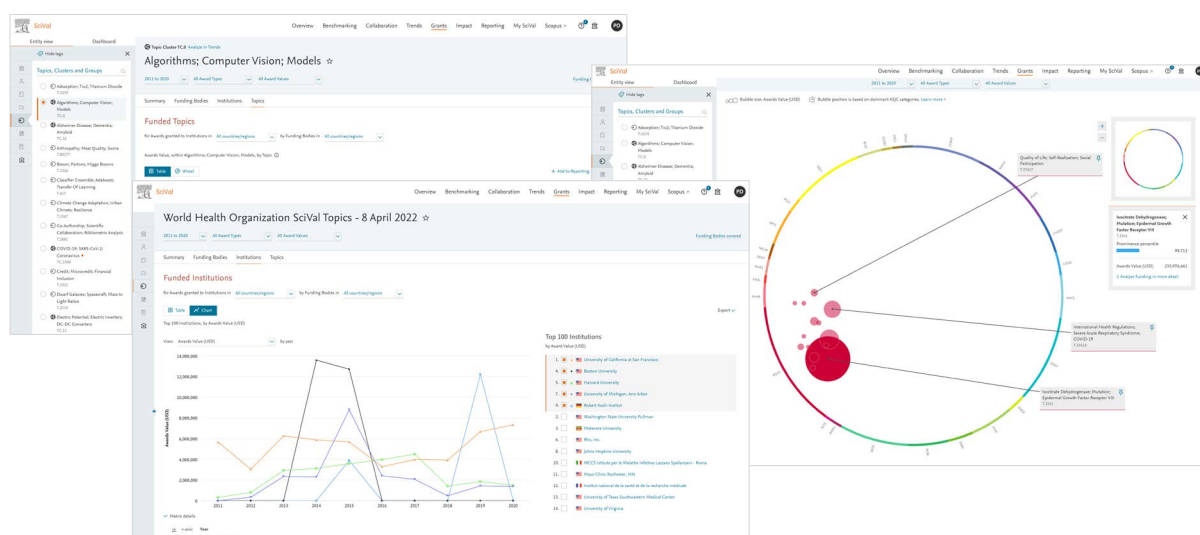
- Who are the central contributors to these areas?

The focus areas of key funding bodies

- Where are we active and where are we not?

The link between scholarship and funding to support planning

- What research areas have high levels of output and what are the relative funding levels in these areas?
- Where are our peer institutions focusing and having success in funding and outputs?



Supporting targeted funding bids by:

Uncovering the funding trends in our priority research fields

- Who has received funding in the fields in the recent past, internally and externally?
- Which funding bodies are active in key research fields?
- How multidisciplinary are our priority research fields?

Identifying funding bodies focused on our areas of expertise

- Which funding bodies should we shortlist for targeted funding bids
- Who in our area of expertise has received funding in the recent past and could represent a partnership or collaboration opportunity?

Highlighting research areas being funded in adjacent fields

- Do any of these areas represent an opportunity for a new collaboration, partnership or strategic expansion of research groups?



For more information, visit
elsevier.com/solutions/scival