



RDM webinar series

'From Strategy to Impact

**What you need is an infrastructure
(people & technology) and a mindshift'**

Webinar 2 of 3: 'Needle in a Haystack: Where is my Institution's Data?'

Monitor & report research data

16 March 2023

What will await you today?

- Host: Lorenzo Feri, Director Product Management, Research Data Management Solutions @Elsevier
- Practice examples of two well respected universities, one in the UK and one in NL
 - Bill Ayres, Strategic Lead for Research Data Management @University of Manchester
 - Wiebe van der Meer, CRIS metadata specialist & Hester Kamstra, CRIS metadata support (university library) @University of Groningen

Research Data has become a high priority

- **Funders policies**

Most funders around the world have a policy on Research Data sharing

- **Publishers policies**

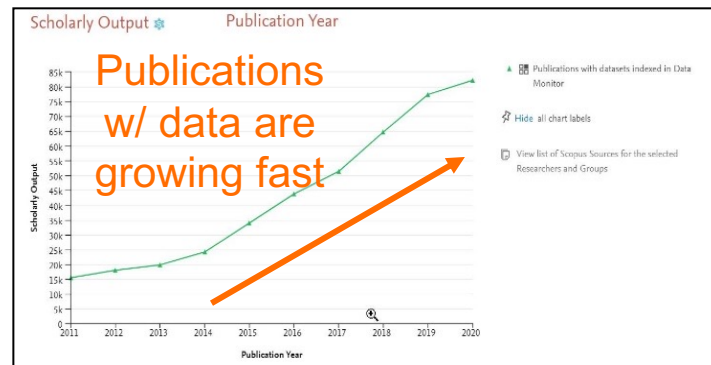
All the largest publishers (incl. Elsevier) have a policy on Research Data sharing

- **Government strategic agendas**

Govts and national bodies around the world



“No opting out of RDM”



US

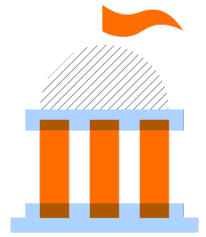


France



Malaysia

Institutions are ramping up RDM efforts



- Hiring data stewards / data librarians
- Data Management Plans
- Data Repository
- Reporting (compliance, assessment, etc) on Data
- Showcasing Data

Challenge: Where is the institutions' research data?

Where is the institutions' Research Data?



Up to **90%**

- is deposited in any of the 1000s domain-specific / generalist repositories
- This is in accordance to community best practices and funders recommendations (e.g. NIH)



Sources:

1: E. Zudilova-Seinstra; A. Zigoni; W. Haak (2020), "Analysis of research data for 11 Institutions – Data Monitor", doi: 10.17632/k5p45z33kb.3



NEEDLE IN THE HAYSTACK: WHERE IS MY INSTITUTION'S DATA?

Elsevier Webinar 16 March 2023, 14:00 CET

Bill Ayres - Strategic Lead for RDM - The Library
The University of Manchester

bill.ayres@manchester.ac.uk

[@BillAyres_UoM](https://twitter.com/BillAyres_UoM)



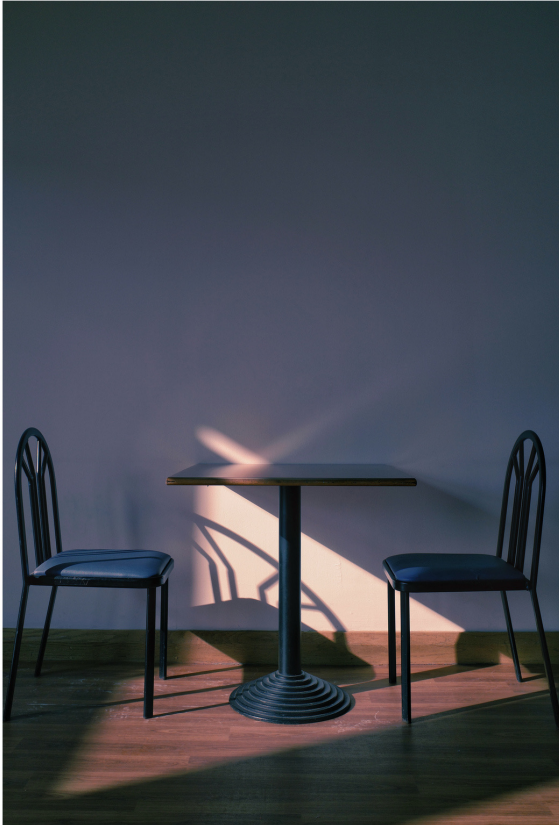
Background, or "Give the people what they need"

- The Research Lifecycle Programme (RLP) - 2018 - ongoing
- We need our own research data repository
- For researchers who don't have an external RDR of choice
- For better support, administration and reporting
- To foster more effective data publishing
- Create a closer connection between our data outputs and institution



A new research data repository for our community

- Project to implement the RDR during 2019-21
- UoM Figshare for Institutions launched May 2021
- Owned and managed by The Library
- Training, advocacy and engagement
- Review and curation of deposits
- Reporting and administration
- Service development
- ...and all the other stuff busy Librarians do :)



Can Figshare and Pure be integrated?

- Our CRIS is Pure
- Manual DOI submission process
- Something else for researchers to do
- How to present Figshare data in Pure?
- Nothing off the shelf or without a development cost
- Wait a minute, "Data Monitor" ?



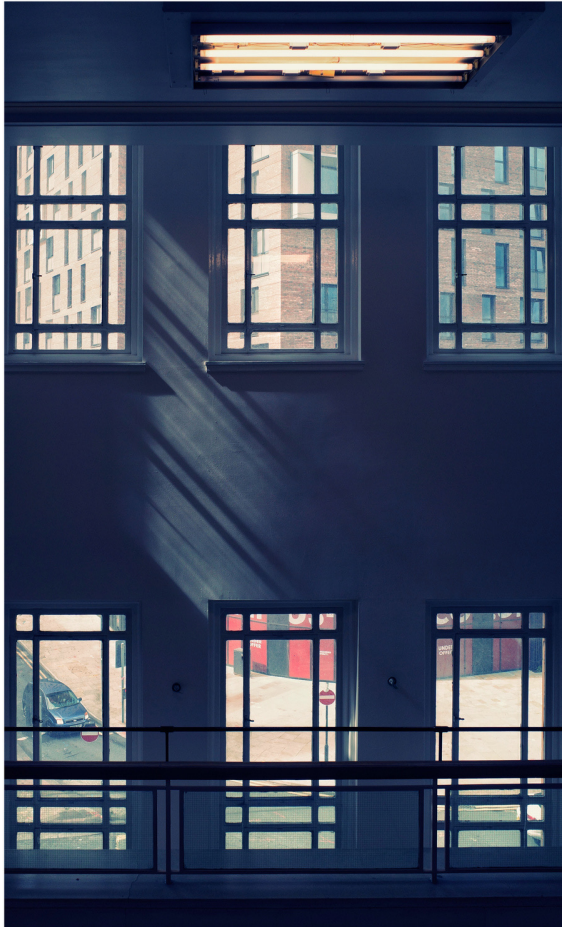
"Could Data Monitor be the answer?"

- An appreciation of Data Monitor's functionality
- This could be the link we need
- Let's talk about how to move forward
- Including Elsevier, RDM, Metadata and Pure Teams
- Working group assembled
- Essential to have the right people in the project group



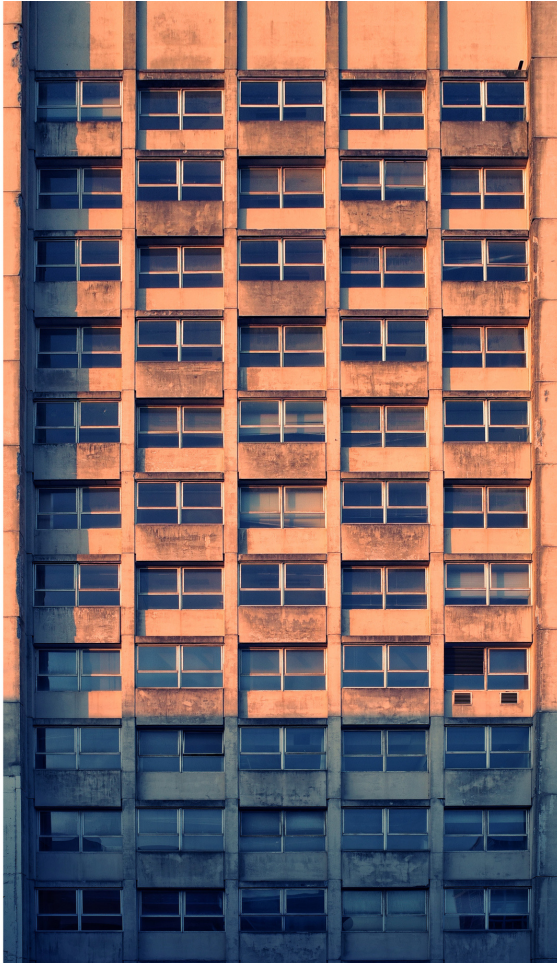
Making it Work

- Training and familiarisation
- Implementation and testing
- Connecting our Figshare
- 15K data resources "in the wild" !
- Workflows and process
- Bugs and technical support



Ready, Let's Go

- Activation in live environments
- ~600 data resources to import
- Working through the list
- Becoming a standard task
- Unexpected behaviour and support fixing



"What about the rest...?"

- Returning to data resources in the wild
- Working group is assessing this
- Maybe the "big" RDRs first?
- Or should we aim for under represented data?
- Resourcing questions
- To be continued...



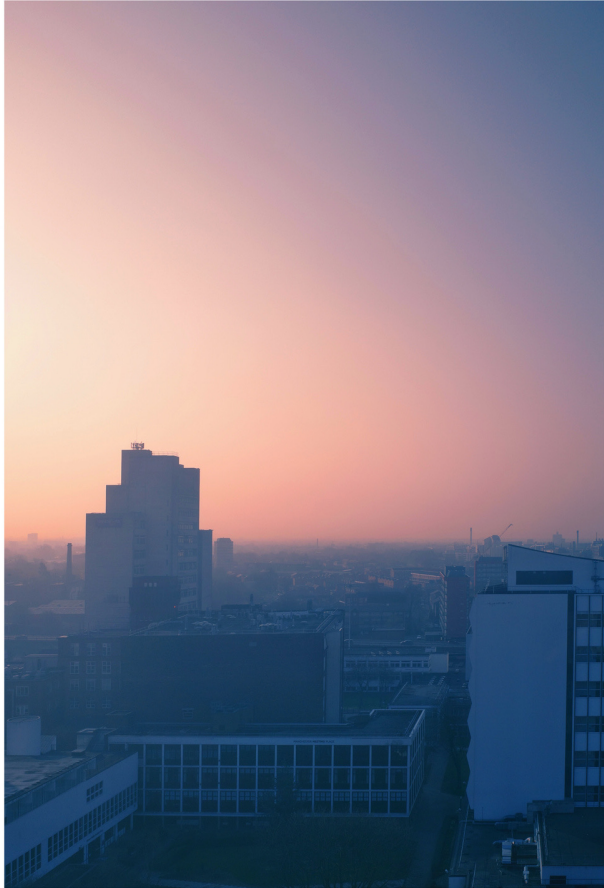
The wider open research picture and unexpected benefits

- Priorities from our Open Research Strategy
- The "Open Research Tracker"
- Data Monitor as a part of this
- Unexpected benefits
- Open code and software
- Data stewards at UoM



Where are we now and where are we going?

- Data Monitor fulfils a crucial role in our infrastructure
- Removes a manual process for researchers
- Potential to work with other services in development
- Sustainable resourcing
- The wider community and our experience: talk to us!



Thank you, and some more information

- www.figshare.manchester.ac.uk
- www.openresearch.manchester.ac.uk/support/tracker/
- www.openresearch.manchester.ac.uk/projects/data-stewardship/
- www.library.manchester.ac.uk/services/research/research-data-management/sharing/
- bill.ayres@manchester.ac.uk



Webinar Data Monitor (Elsevier)



Wiebe van der Meer & Hester Kamstra (University of Groningen Library)



Dutch research infrastructure

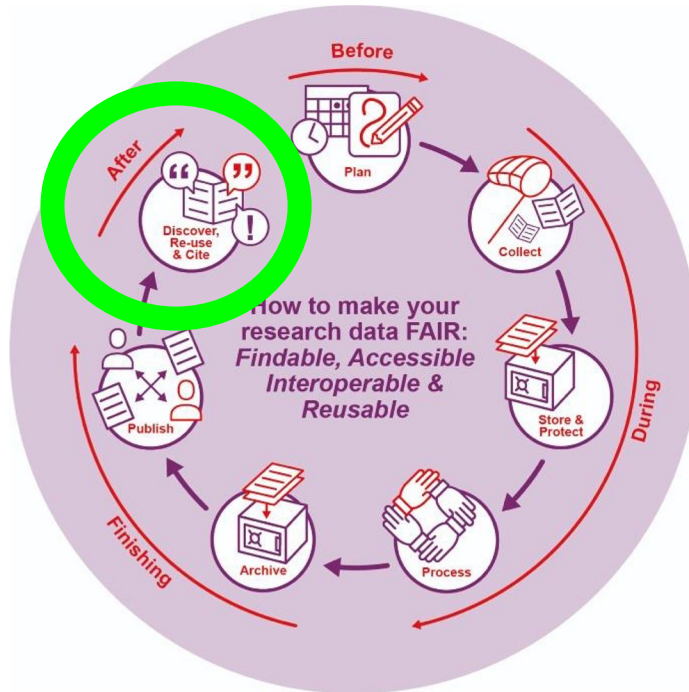


Requirements by NWO (Dutch Research Council)

“NWO therefore expects researchers to: [...] Deposit research data in a trusted repository in such a way that the data are as findable, accessible, interoperable and reusable (FAIR) as possible.”

(<https://www.nwo.nl/en/research-data-management>)

FAIR @ University of Groningen



“Place the spotlight on datasets and software from the UG research portal”

But... Only a very small percentage of datasets are stored in an institutional repository



1. Looking back

(Help, a haystack:
first datasets into CRIS)

Where to start looking?

- Known databases, manual query
- Link to data attached to publications



Showing the datasets on our research portal



Filling in the metadata as completely as possible



Incomplete information at the external repository



Defining the right query to find the right dataset



Copying the metadata of a dataset with >50 authors



Considering our options

Case Study:
University of Groningen
How Groningen is drawing on the insights gleaned
from Data Monitor to shape strategic thinking



Data Monitor
Track and analyse your institutional research data



- > Lots of work for an incomplete picture
- > API connection with Dataverse (but Dataverse was also included in DM)
- > Data Monitor pilot (2019, 12-months)



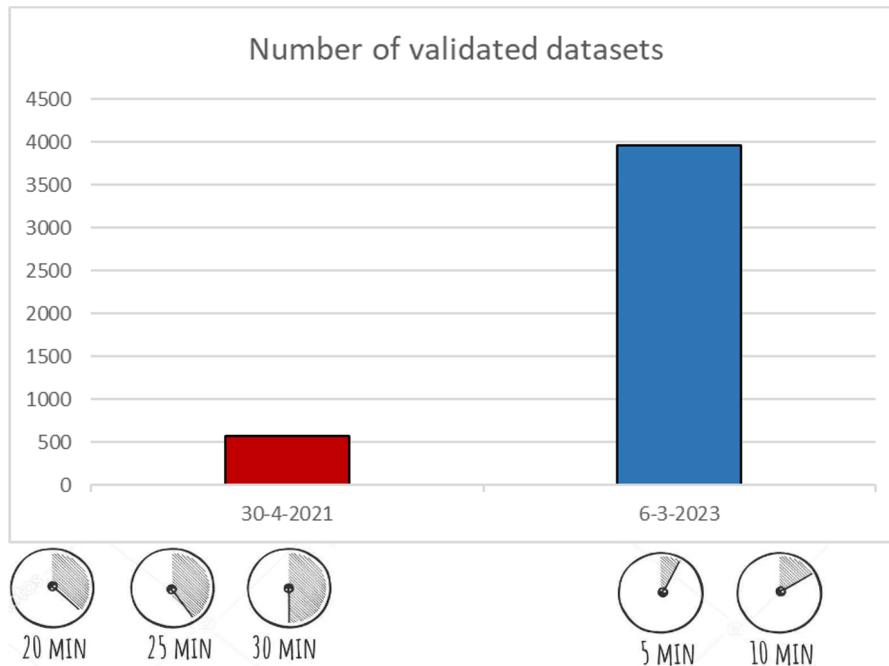
2. Current situation

(Systematically collecting needles from the haystack)





Manually vs DataMonitor





A wide range of sources

National



Data Archiving and Networked Services

DANS

International



CCDC

zenodo

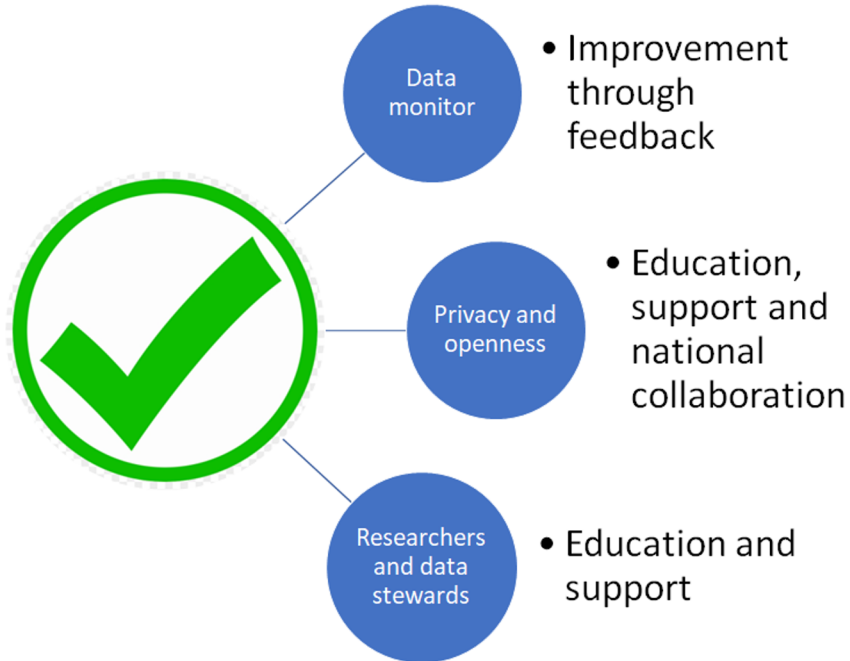


Issues





Solutions





3. Looking forward (Monitoring (and adding to) the haystack)



Looking towards the future

- Monitoring and reporting (open science, FAIR - including datasets)
- Importing from own RDMS
- Role of data stewards (Groningen Digital Competence Center): education and support
- Continued cooperation with other Dutch institutions



Things we wish we'd known

- › Starting to add datasets into CRIS before having a strategy (to look for them) = not a good idea
- › Some fields of research have their own (very specific) relevant repositories (and therefore do not use DataverseNL)
- › Completeness and data quality varies a lot among repositories

Please join us for more



Webinar 1

Your Institution's Research Data Deserves a Great Home: Publishing, archiving and preserving data

Guest speakers:

- [DataCite](#)
- [Erasmus University Rotterdam](#)
- [ETH Zurich](#)



Webinar 2 today

Needle in a Haystack: Where is my Institution's Data? Monitor & report research data

Guest speakers:

- [The University of Manchester](#)
- [University of Groningen](#)



Webinar 3 on 23 March 2023, 14:00 CET

RDM is a Team Sport, Not a Single Player Mission: Best national practices and future outlook

Guest speakers:

- [Swedish National Data Service](#)
- [Technopolis Group](#)

Sign up here: <https://bit.ly/RDMWeb1>



Where is your research data? How to find your institution's research data and monitor compliance?

Join our webinar
'Research data served fresh daily - How our customers find their research data in external subject repositories
on 2 June 2023 11:00 CTE

Please register here: bit.ly/3mKhyEk



How to organize the research data of my institute with Elsevier?

Floortje Flippo

Regional Director **Research Intelligence Europe**

Elsevier

f.flippo@elsevier.com

