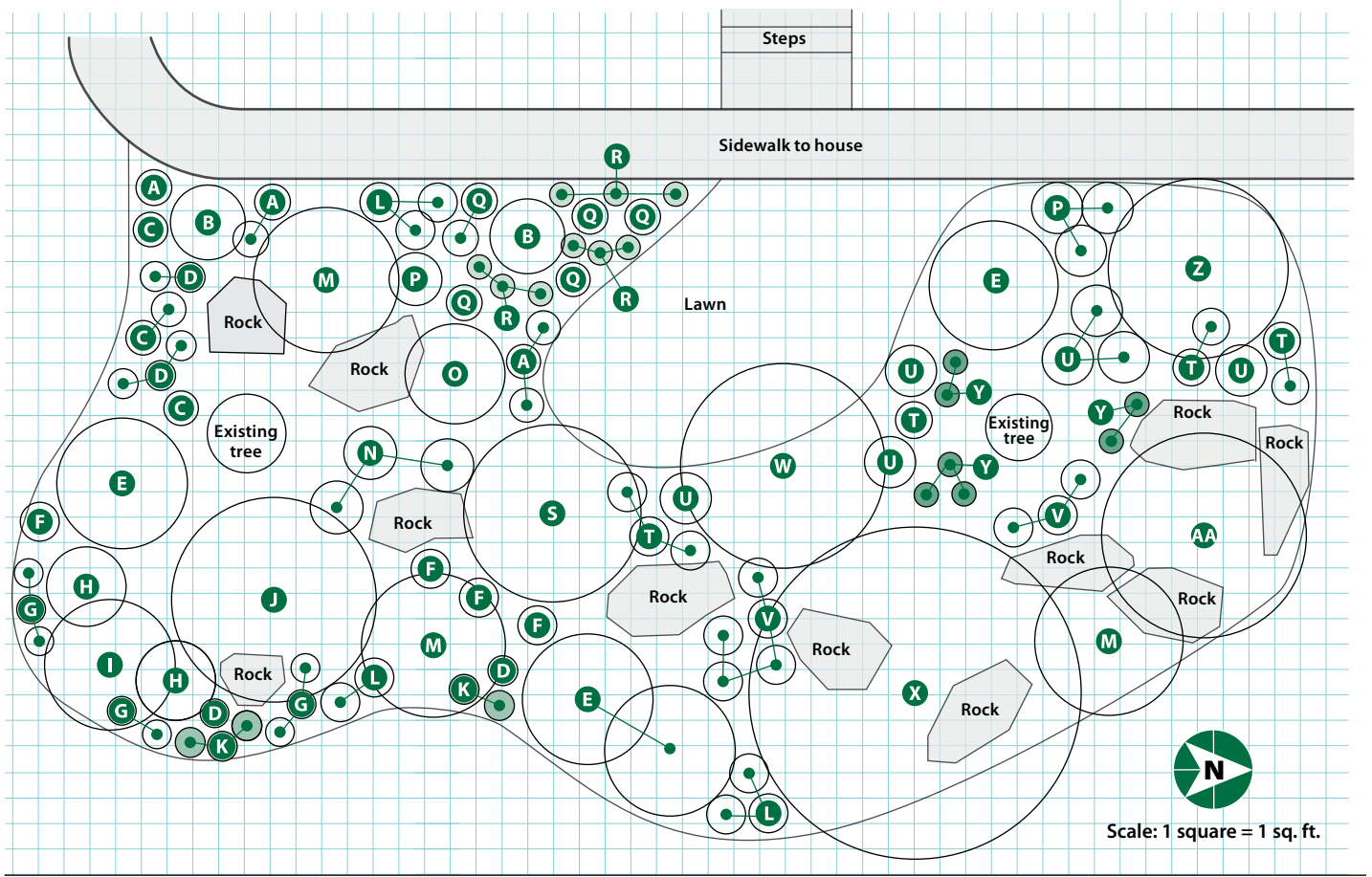


GARDENING BENEATH THE OAKS

The answer to making this front yard more attractive and friendly lies in integrating the house and landscape — no small feat when you have two large pin oaks staring you in the face. Rather than obstacles, the two giants are valuable assets. After all, they have generations of growth already in them; what they really need is a better stage.

Shady understory beds like this one depend on plants with colorful or variegated foliage. That way, there's always something to catch your eye. But there are still a range of flowering plants, from perennials to ground covers to shrubs and trees. Add seasonal flower power with annuals and bulbs. □



THE GARDEN'S PALETTE

Code	Plant Name	No. to Plant	Type	Blooms	Height/ Width	Cold/Heat Zones	Comments
A	Lungwort <i>Pulmonaria</i> 'Lewis Palmer'	6	Perennial	Blue; early spring	12-14 in./ 12-18 in.	4-9/9-1	Lance-shaped leaves with silver spots
B	Rhododendron <i>Rhododendron</i> 'Sneezy'	2	Shrub	Pink; spring	3-4 ft./ 3-4 ft.	5-9/9-1	Large, light pink flowers with deeper pink highlights; compact, mounded evergreen
C	Fernleaf bleeding heart <i>Dicentra</i> 'Luxuriant'	4	Perennial	Pink; spring to summer	12-15 in./ 18-20 in.	3-8/8-1	Dark pink flowers on long stems; ferny blue-green foliage; blooms all summer
D	Hakonechloa <i>Hakonechloa macra</i> 'Aureola'	7	Grass	Green-bright yellow; late summer to fall	1-2 ft./ 1-2 ft.	5-9/9-1	Inconspicuous flowers; bright yellow and green variegated foliage
E	Pagoda dogwood <i>Cornus alternifolia</i> Golden Shadows ('WStackmann')	3	Shrub	White; late spring to early summer	10-12 ft./ 6-8 ft.	3-7/7-1	Brightly variegated foliage all season; informal, layered habit
F	Brunnera <i>Brunnera macrophylla</i> 'Jack Frost'	4	Perennial	Blue; spring	12-18 in./ 18-24 in.	3-7/7-1	Silver foliage with contrasting green veins; slow- growing, spreading ground cover
G	Hosta <i>Hosta</i> 'Lemon Lime'	8	Perennial	Purple; summer	9-12 in./ 12-18 in.	3-9/9-1	Lance-shaped chartreuse leaves; compact, vigorous, clump-forming hosta
H	Hosta <i>Hosta</i> 'Abba Dabba Do'	2	Perennial	Pale lavender; summer	18-24 in./ 36-48 in.	3-9/9-1	Heart-shaped dark-green leaves with yellow margins; large, vigorous, clump-forming hosta
I	Kerria <i>Kerria japonica</i> 'Golden Guinea'	1	Shrub	Golden yellow; spring	4-8 ft./ 5-9 ft.	4-9/9-1	Green stems for winter interest; mounded habit with arching branches; fast growing
J	Mountain laurel <i>Kalmia latifolia</i>	1	Shrub	Pink; late spring to midsummer	3-15 ft./ 3-15 ft.	4-9/9-1	Evergreen; informal, irregular habit; prefers regular moisture and acid soil
K	Welsh poppy <i>Meconopsis cambrica</i>	5	Perennial	Yellow; spring to fall	12-18 in./ 12-15 in.	6-8/8-1	Often grown as an annual; requires moist soil
L	Sweet woodruff <i>Galium odoratum</i>	8	Perennial	White; spring to midsummer	6-12 in./ 12-18 in.	4-8/8-1	Tiny flowers; fragrant emerald green leaves; ground cover
M	Oakleaf hydrangea <i>Hydrangea</i> <i>quercifolia</i> Snow Queen ('Flemygea')	3	Shrub	White; summer to fall	3-6 ft./ 6-8 ft.	5-9/9-1	Large flowers turn rose-pink in autumn; deep bronze-red fall foliage
N	Ostrich fern <i>Matteuccia struthiopteris</i>	3	Perennial	NA	36-60 in./18-24 in.	3-7/7-1	Large, graceful fronds; upright habit
O	Inkberry <i>Ilex glabra</i> Nordic ('Chamzin')	1	Shrub	NA	3-4 ft./ 3-4 ft.	4-9/9-1	Lustrous dark evergreen foliage; rounded form; low growing
P	Solomon's seal <i>Polygonatum</i> <i>odoratum pluriflorum</i> 'Variegatum'	4	Perennial	White; late spring to early summer	24-30 in./ 24-30 in.	3-8/8-1	Spreading perennial with white-margined leaves and arching stems; black berries in fall
Q	Japanese painted fern <i>Athyrium niponicum pictum</i>	6	Fern	NA	18-24 in./ 18-24 in.	5-8/8-1	Blue-green fronds edged in silver; slow grower
R	European wild ginger <i>Asarum europaeum</i>	9	Perennial	Green; late spring	4-8 in./ 9-12 in.	5-7/7-1	Kidney-shaped dark-green semi-evergreen foliage; slow-growing ground cover
S	Kousa dogwood <i>Cornus kousa</i>	1	Tree	Green-white; early summer	15-30 ft./ 15-30 ft.	5-8/8-1	Tiny green flowers surrounded by green-white bracts; red-purple fall foliage
T	Coral bells <i>Heuchera</i> 'Plum Pudding'	8	Perennial	White; summer	12-24 in./ 12-18 in.	4-9/9-1	Tiny flowers on tall stalks; purple foliage with silver highlights; mounded habit
U	Hosta 'Blue Cadet'	7	Perennial	Lavender; summer	10-18 in./ summer	3-8/8-1 24-36 in.	Corrugated blue leaves; fast-growing; low-growing
V	Autum fern <i>Dryopteris erythrosora</i> 'Brilliance'	8	Fern	NA	1-3 ft./ 1-3 ft.	5-8/8-1	Fronds emerge red-pink in spring and turn red again in fall to scarlet
W	Witch hazel <i>Hamamelis xintermedia</i> 'Diane'	1	Tree	Copper-red; late winter	6-20 ft./ 6-15 ft.	5-8/8-1	Remove suckers if they form; prune in late spring if necessary to control size
X	Redbud <i>Cercis canadensis</i> 'Hearts of Gold'	1	Tree	Lavender; early spring	15-25 ft./ 20-39 ft.	5-9/9-1	Leaves emerge red then turn to gold
Y	Red barrenwort <i>Epimedium xrubrum</i>	7	Perennial	Red; early spring	6-12 in./ spreading	5-9/9-1	Cut back semi-evergreen foliage in early spring before flowers emerge
Z	Japanese maple <i>Acer palmatum</i> 'Bloodgood'	1	Tree	Purple-red; spring	15-20 ft./ 15-20 ft.	5-8/8-1	New red foliage fades to burgundy, then brightens to scarlet in fall
AA	Weeping hemlock <i>Tsuga canadensis</i> 'Pendula'	1	Tree	NA	5 ft./ 8-10 ft.	4-8/8-1	Evergreen has a mounding, weeping habit