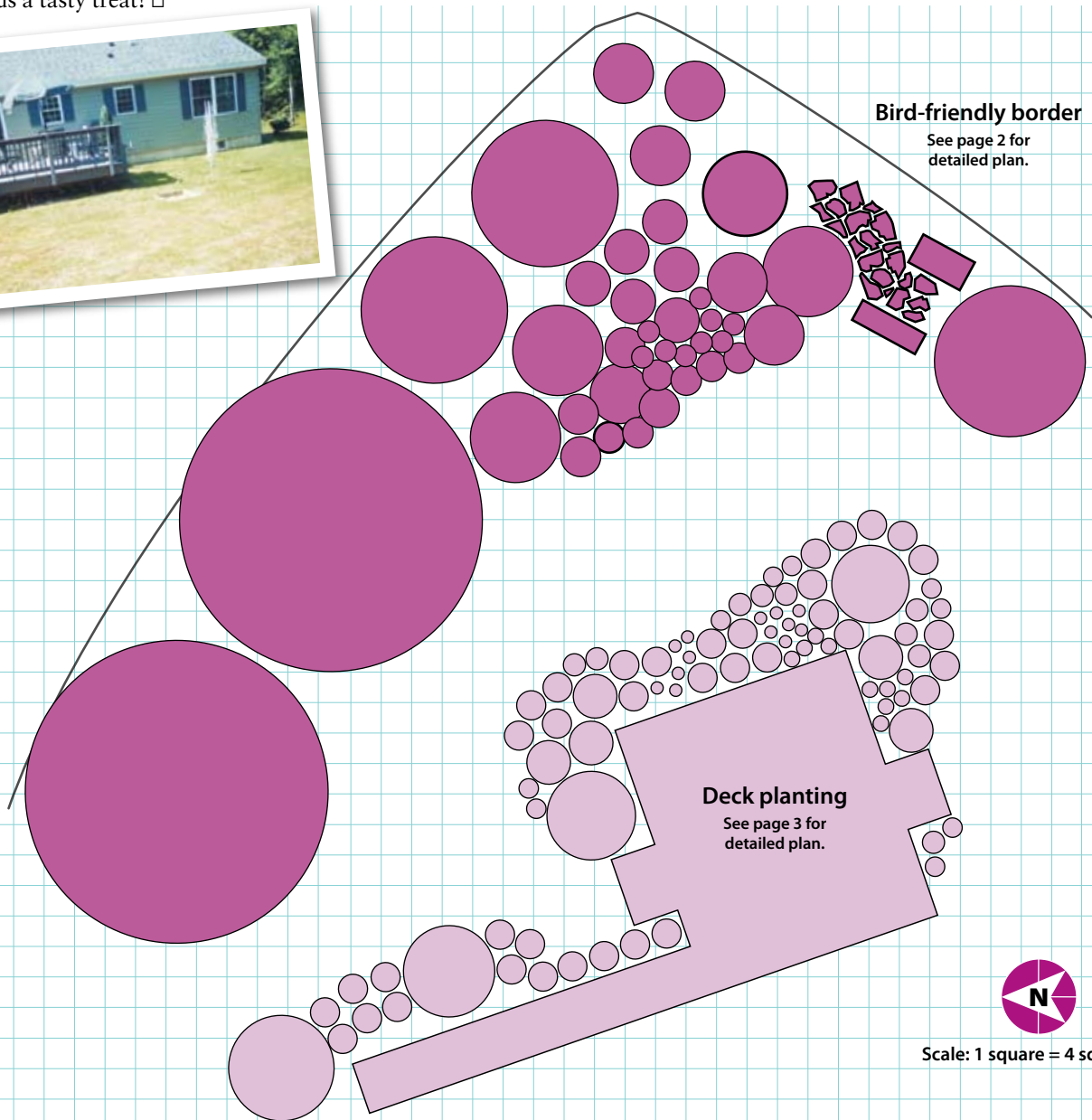


# BIRD-FRIENDLY BORDER

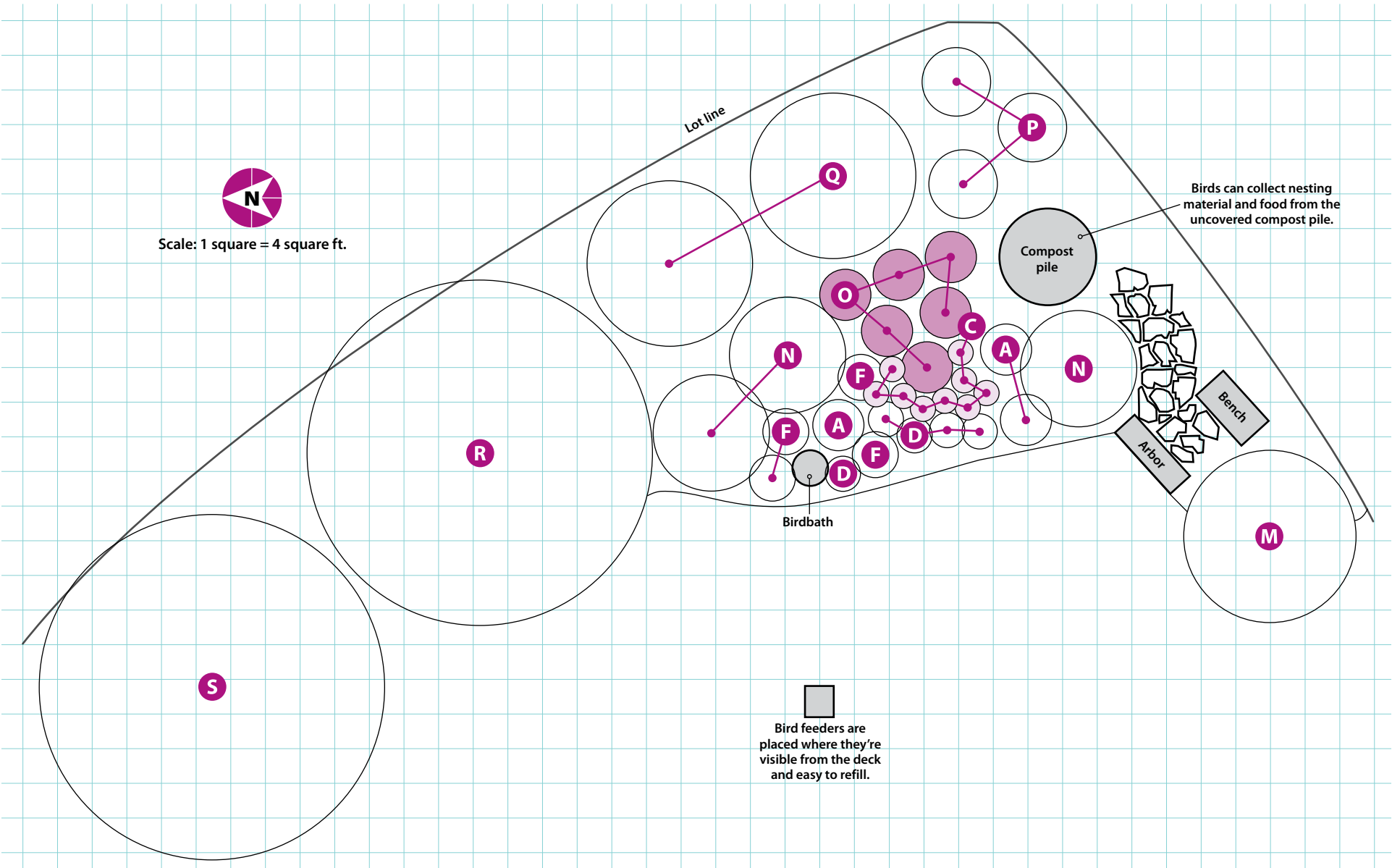
Do you love birds but want to do more to attract them to your yard than just providing a feeder and a birdbath? Well, this back yard border is designed to do just that.

This yard features feeders, a birdbath and an uncovered compost pile (birds love to scavenge for food and nesting material!). But more than that, this design uses evergreens to provide year-round shelter, and fruit- and seed-bearing plants for nourishment. Read about other design tips to bring in birds in *Garden Gate's* Design Challenge, issue 96.

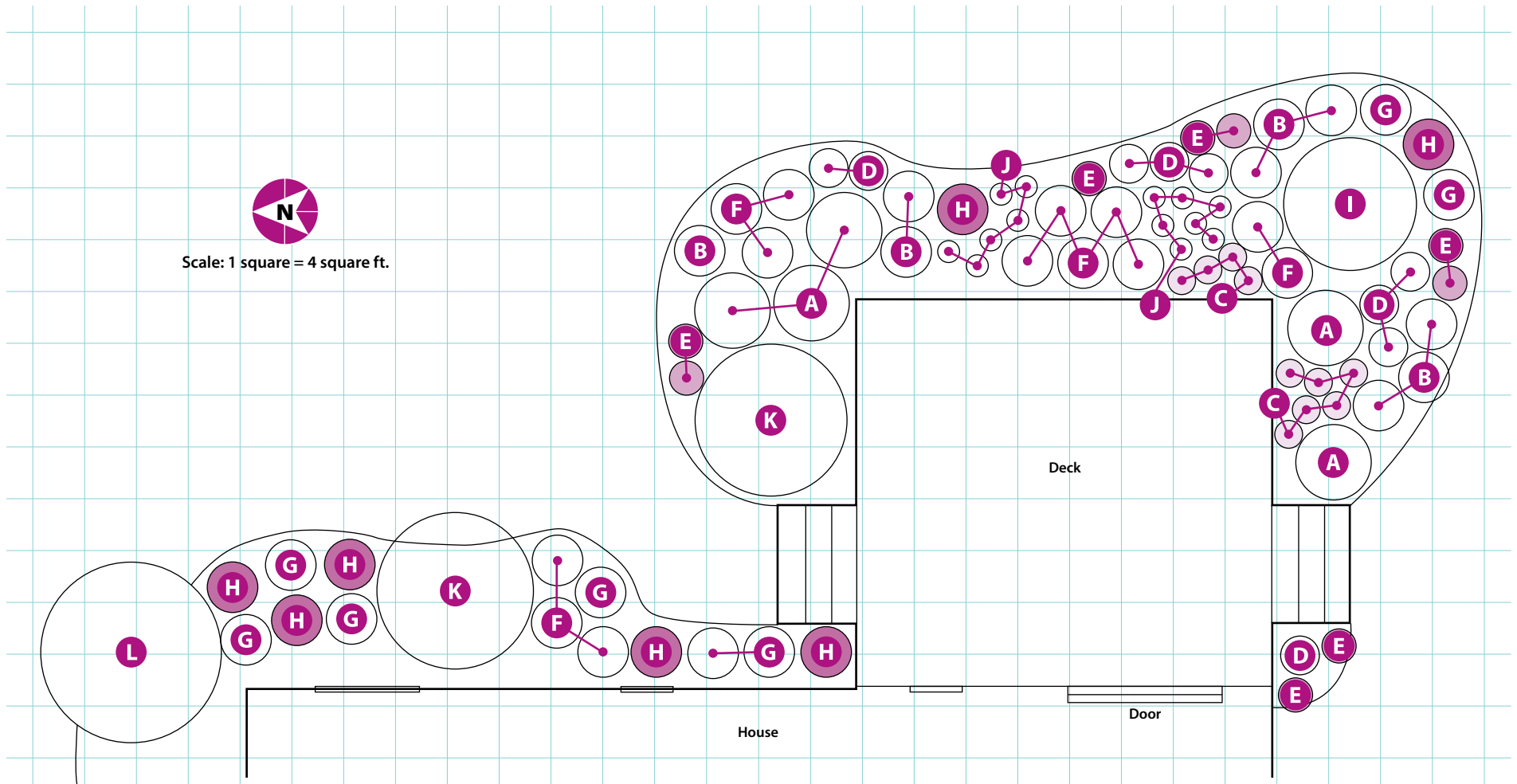
If your garden isn't big enough for this complete plan, feel free to use a portion of it, or even pick and choose some of the plants to give your neighborhood feathered friends a tasty treat! □



# BIRD-FRIENDLY BORDER



## THE DECK PLANTING



## THE GARDEN'S PALETTE

Code	Plant Name	No. to Plant	Type	Blooms	Height/ Width	Cold/Heat Zones	Comments
<b>A</b>	<b>Bee balm</b> <i>Monarda</i> 'Jacob Cline'	8	Perennial	Red; early summer	3-4 ft./ 2-3 ft.	4-9/9-1	Erect stems; attracts bees and hummingbirds; very mildew-resistant; divide every three to four years in spring or fall
<b>B</b>	<b>Threadleaf coreopsis</b> <i>Coreopsis verticillata</i> 'Moonbeam'	9	Perennial	Pale yellow; early to midsummer	18-24 in./ 18-24 in.	3-9/9-1	Blooms for a long time in early to midsummer; shear plant back by half in midsummer to encourage a smaller late-season rebloom
<b>C</b>	<b>Ornamental millet</b> <i>Pennisetum glaucum</i> 'Purple Majesty'	19	Tender perennial	Purple; early to late summer	48-60 in./ 9-12 in.	9-11/12-1	Striking dark purple stems and wide leaves; flower spikes have purple-brown seeds that are attractive to birds
<b>D</b>	<b>Goldenrod</b> <i>Solidago</i> 'Crown of Rays'	14	Perennial	Yellow; midsummer to fall	18-24 in./ 12-18 in.	5-9/9-1	Long bloom period; good cut flowers; attractive to bees, birds and butterflies; divide every three to four years
<b>E</b>	<b>Aster</b> <i>Aster</i> 'Wood's Light Blue'	9	Perennial	Blue; late summer to fall	12-15 in./ 12-15 in.	4-8/8-1	Very mildew- and rust-resistant; compact rounded habit needs no staking; attracts butterflies; deer-resistant
<b>F</b>	<b>Purple coneflower</b> <i>Echinacea purpurea</i> 'White Swan'	17	Perennial	White; summer	24-36 in./ 18-24 in.	3-9/9-1	Drought-tolerant; flowers keep color better in part shade in hot summer areas; leave ornamental seed heads for birds to feed on; divide every three to four years
<b>G</b>	<b>Coral bells</b> <i>Heuchera</i> 'Caramel'	8	Perennial	Light pink; summer	9-18 in./ 12-24 in.	4-9/9-1	Leaves emerge gray-red in spring and age to caramel color; mulch after ground freezes to prevent root heaving
<b>H</b>	<b>Coral bells</b> <i>Heuchera</i> 'Purple Petticoats'	7	Perennial	White; spring	12-18 in./ 18-24 in.	4-9/9-1	White spring flowers attract hummingbirds; dark purple, frilly edged leaves have best color with afternoon shade
<b>I</b>	<b>Rock cotoneaster</b> <i>Cotoneaster horizontalis</i>	1	Shrub	Pale pink; early summer	24-36 in./ 4-7 ft.	5-7/7-1	Small, pale pink flowers in early summer, red berries in late summer to fall; red-purple fall foliage; slow growing
<b>J</b>	<b>Bachelor's button</b> <i>Centaurea cyanus</i> 'Blue Boy'	13	Annual	Blue; summer to frost	24-30 in./ 9-12 in.	Annual/12-1	Drought-tolerant; good cut or dried flowers; deadhead faded flowers to encourage more blooms but leave some so it will self-seed
<b>K</b>	<b>Spreading yew</b> <i>Taxus xmedia</i> 'Densiformis'	2	Shrub	NA	3-4 ft./ 4-6 ft.	4-7/7-1	A female cultivar that produces red, fleshy fruit; spray with antidesiccant to prevent winter burn
<b>L</b>	<b>Black chokeberry</b> <i>Aronia melanocarpa</i> 'Autumn Magic'	1	Shrub	White; late spring	3-6 ft./ 4-7 ft.	3-8/8-1	White spring flowers; bitter glossy black berries in fall attract birds; purple-red fall foliage
<b>M</b>	<b>Sour cherry</b> <i>Prunus cerasus</i> 'North Star'	1	Tree	White; spring	7-9 ft./ 8-10 ft.	4-8/8-1	White spring flowers; self-pollinating; early summer bright red sour cherries are good for pies and baking
<b>N</b>	<b>Dwarf Korean lilac</b> <i>Syringa meyeri</i> 'Palibin'	3	Shrub	Pale pink; spring	4-5 ft./ 5-7 ft.	3-8/8-1	Fragrant, pale pink spring flowers; extremely resistant to powdery mildew; compact habit
<b>O</b>	<b>Annual sunflower</b> <i>Helianthus annuus</i> 'Giganteus'	6	Annual	Yellow; summer	8-12 ft./ 1-2 ft.	Annual/12-1	Large 12-in. blooms attract butterflies; heat- and drought-tolerant; late summer to fall seeds attract birds; direct sow in garden
<b>P</b>	<b>Arborvitae</b> <i>Thuja occidentalis</i> Emerald ('Smaragd')	3	Tree	NA	12-15 ft./ 3-4 ft.	4-8/8-1	Upright pyramidal habit; evergreen; spray antidesiccant on needles to protect from winter desiccation
<b>Q</b>	<b>Common lilac</b> <i>Syringa vulgaris</i> 'President Grevy'	2	Shrub	Blue-violet; late spring to early summer	8-15 ft./ 6-10 ft.	3-8/8-1	Fragrant flowers in late spring to early summer; best flowering in full sun; fast grower; prune suckers to keep plant tidy
<b>R</b>	<b>Serviceberry</b> <i>Amelanchier xgrandiflora</i> 'Autumn Brilliance'	1	Tree	White; early spring	10-30 ft./ 10-25 ft.	3-9/9-1	Red summer berries age to black; white flowers emerge before leaves in early spring; leaves turn brilliant orange-red in fall
<b>S</b>	<b>Colorado spruce</b> <i>Picea pungens</i> 'Hoopsii'	1	Tree	NA	30-50 ft./ 15-20 ft.	2-8/8-1	Dense pyramidal habit with silver-blue needles; does best in cooler northern regions