

Ready to explore?

Quickly check your shoe size in 4 steps!

1

Is the printout correct?
Compare!



Space for
your feet to
unroll.

Space for
your feet to
grow.

4

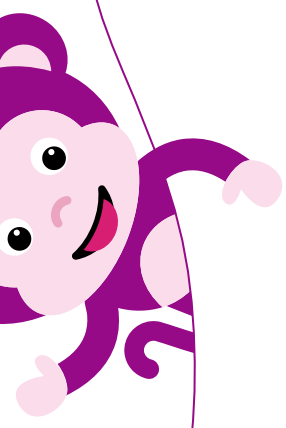
If your largest toe
touches this line your new
shoe fits perfectly!

3

Position your
heel here!

2

Separate this card
by the perforated
line and put the card
against the wall.



Tip

Keep the size guide in a safe
place and regularly check your
shoe size!



Find more styles
and information here:

