

Press Contact
Jonathon Litchfield

jonathon@manofparts.com

FOR IMMEDIATE RELEASE

**MAN OF PARTS to unveil novelties at
3daysofdesign in Copenhagen in collaboration
with Sahco Creative Director, Bengt Thornefors**



**MAN
OF
PARTS**

Exhibiting for the second time as part of 3daysofdesign in Copenhagen from June 12 – 14th, 2024. MAN OF PARTS returns with cross-cultural, design-fused elements from their growing roster of international designers to launch a collection of novelties detailed with Sahco's latest textile collection at the FRAMING, exhibition at the Odd Fellow Palæet.

Highlighted amongst the new releases are the Praia da Granja tables by Studio Sebastian Herkner; the playful Via Giulia sofa by Yabu Pushelberg; and the Alexander Street Bench by Philippe Malouin. Stemming from a long-time collaboration with Sahco, MAN OF PARTS engaged Creative Director Bengt Thornefors to lend his sartorial eye to the exhibition. Notably, designers in attendance this year will be Yabu Pushelberg, Sebastian Herkner, Philippe Malouin, and Simone Coste.

Founder of MAN OF PARTS, Stephan Weishaupt, anticipates the opening of the exhibition: "We are thrilled to once again exhibit at 3daysofdesign. True to our promise, the introduction represents a post-national perspective told through a series of material and creative stories."

Born and raised in Munich, Stephan's family — a long line of craftsmen, entrepreneurs, architects and artists — informed his curiosity, creativity and an openness to explore many points of view. Embodying a *Man of Parts* himself, Stephan travels the world in search of unique perspectives reflecting the lives of globally-minded people.

About Man of Parts

MAN OF PARTS is a post-national design brand that reflects the perspectives of globally minded individuals. By combining modern aesthetics with a considered service approach, MAN OF PARTS aims to embody how people define 'luxury' today.

Designs from Yabu Pushelberg, Sebastian Herkner, Christophe Delcourt, Simone Coste, Workshop/APD, Philippe Malouin and Osvaldo Tenório create a diverse design aesthetic, drawing inspiration from around the globe. MAN OF PARTS is available through exceptional stockists of modern design from Dubai to Dublin, Bangkok to Miami Beach.

www.manofparts.com

About Framing

FRAMING is a presentation of dynamic brands showcasing new and bespoke designs during 3daysofdesign in Copenhagen. Established in 2018, FRAMING will showcase 36 international and Danish Brands at the Odd Fellow Palace.

[FRAMING](#)

Odd Fellow Palace
Bredgade 28
1260 Copenhagen

www.3daysofdesign.dk/exhibitors/framing

The Designers

Yabu Pushelberg
Canada

[@yabupushelberg](#)
[@georgeglenn](#)

Yabu Pushelberg designs places and products: immersive environments, compelling destinations and considered goods. George Yabu and Glenn Pushelberg founded the studio in 1980 with an emphasis on interior design and have since expanded the studio into a multidisciplinary practice that addresses multiple layers of human experience.

With offices in New York and Toronto and a team of more than a hundred creatives and professionals, the studio specializes in sensibilities spanning buildings, interiors, landscapes, lighting, furniture, objects and graphics with a focus that goes well beyond what things look like, to how they make people feel.

Sebastian Herkner
Germany

[@sebastianherkner](#)

Cultural mix master, Sebastian Herkner was born in 1981 in Bad Mergentheim. He studied product design at the HfG Offenbach am Main, the Offenbach University of Art and Design. A perfect fit for MAN OF PARTS, Sebastian from his first designs has focused on merging various cultural contexts, combining new technologies with traditional craftsmanship in order to highlight the multifaceted beauty of the materials and draw renewed attention to small details.

Christophe Delcourt
France

[@christophedelcourt](#)

A vocational student, Christophe Delcourt perfected his craft in the ateliers of Paris. His founding pedagogy guides his design philosophy and dedication to purity of form, honest proportions and commitment to materiality. His journey as a designer has spanned two decades marked by notable collaborations and coveted furniture designs.

A pioneer of French modernism, his self-taught craft never strays from the organic contours of his source materials and nature-inspired forms. A native Parisian, he escapes his city studio to the countryside of Normandy to recharge with his horses on his French estate.

Workshop/APD
United States

[@workshopapd](#)

Multidisciplinary architecture and design collective, Workshop/APD, is celebrated for its grit, humor and contextually relevant modern designs. Collaborative to the core, the firm crafts integrated structures, spaces and products with a global perspective and a people-first approach.

Philippe Malouin
Canada

[@philippemalouin](#)

Philippe Malouin is a Canadian designer known for his innovative approach and diverse portfolio spanning furniture, installations and conceptual projects. Exploring the intersection of art and functionality, Malouin blends aesthetics with practicality in unexpected ways. He is renowned for his attention to detail and his ability to challenge conventional design norms. Throughout his career, Malouin has collaborated with leading design brands and institutions around the world, including Established & Sons, Hem, Ace Hotel and Matter-Made, among others. His designs have been exhibited internationally, garnering acclaim for their ingenuity and craftsmanship. With sustainability at his core, Malouin rolls up his sleeves for environmental design.

Simone Coste
Brazil

[@simonecoste.design](#)
[@simonecoste](#)

Brazilian Simone Coste is a multi-disciplinary artist, jewelry and furniture designer. Contemporary, philosophical and timeless, her designs permeate all elements of art. Printing a unique style that can be felt in all her creations, Coste builds forms from silhouettes of bronze, stones, resin and other precious materials. Her serendipitous meeting with Stephan Weishaupt sparked a friendship filled with adventures together in both North and South America.

New Releases

Via Giulia Yabu Pushelberg

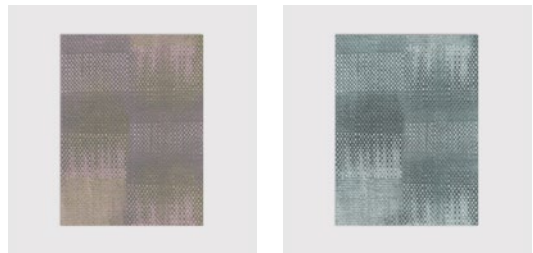
Beginning with an ivy-draped arch designed by Michelangelo, Via Giulia is a cobbled street in Rome lined end to end with churches and historic palazzo. Often contrasted with the vibrant Via del Corso, this picturesque lane invites a contemplative stroll. Yabu Pushelberg's design shares the same intention as Michaelangelo's vision for the via—an escape from the rhythms of modern life, creating moments of genuine connection.



Sofa

Honcho Street Yabu Pushelberg

Honcho Street, otherwise known as Fuji-michi, runs through "The Weaving City" of Fujiyoshida, Japan, connecting the capital of the country's textile industry to Mount Fuji. Yabu Pushelberg's design is an ode to the woven patterns of traditional Japanese textiles, reworked and magnified.



Rugs

Fuji-michi Yabu Pushelberg

Fuji-michi, otherwise known as Honcho Street, nestled at the base of Mount Fuji, offers picturesque views of the iconic mountain. Historically lined with hataya weaving shops, it served as a vital route for regional fabric trade. Yabu Pushelberg's magnified design pays homage to the intricate patterns of traditional Japanese woven textiles.



Rug

Surfside Drive Workshop/APD

Situated between the town and coast, Surfside Drive curves to follow the natural contours of Nantucket's harbour. Workshop/APD's design emphasizes sustainable material choices which include pressed recycled coffee grounds.



Console

Alexander Street Philippe Malouin

Striking an emotional connection for automotive enthusiasts, the Alexander Street design by Philippe Malouin is certain to win a place in future Concours d'Elegance. The perforated leather, lines and ribs are evocative of the iconic leather seats of the family cars the designer grew up with on Alexander Street in Montreal. This design balances nostalgia with modernity.



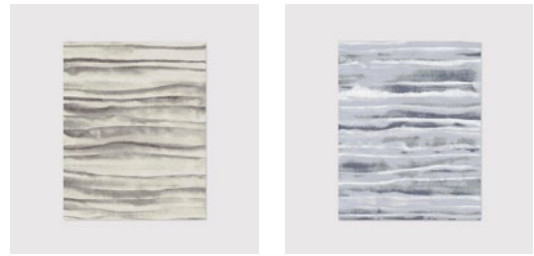
Stool



Bench

Badlands
Sebastian Herkner

The Badlands of South Dakota showcase a rugged landscape carved by wind and water over thousands of years, boasting geological formations and vibrant colors. Its fossil-rich terrain preserves the history of prehistoric creatures and ecosystems. Sebastian Herkner's rug design is reminiscent of the sedimentary layers and intricate patterns mirroring the dynamic contours of the Badlands' rugged landscape.



Rugs

Praia da Granja
Sebastian Herkner

A preferred summer destination for Europe's well-heeled travelers, Portugal's Praia da Granja brings together the best of the coastline. Embraced by rugged cliffs and bordered by seaside promenades, the Praia offers a serene seaside escape. The ocean stairs leading to the Atlantic reflect the wide radius and rippled detail of Sebastian Herkner's design.



Coffee Table

Side Table

Sandy Cove
Sebastian Herkner

Composed of jutting sea-cliff footpaths and clapboard houses, the offshore of Newfoundland and Labrador's Fogo Island is set against a striking coastline. The design of Sebastian Herkner's gathering place mimics the Cove's curved geography.



Armchair

Rua das Pedras
Simone Coste

On the most charming street in Búzios, Rua das Pedras traces the ocean peninsula, adjoining cobbled city streets with azure waters and white sand. Printing Brazilian style, Simone Coste's design incorporates shapes inspired by the silhouettes of the shoreline, blending man-made and natural formations.



Rugs

