



JAPAN SOCIETY

ANNUAL REPORT
2020—2021

年次報告書
2020—2021年度



BOARD OF DIRECTORS

Yo Akatsuka
President & CEO
Nomura Holding America Inc.

Mitsuru Claire Chino*
President & CEO
ITOCHU International Inc.

Gerald L. Curtis
Burgess Professor of Political Science
Columbia University

Ariel J. Deckelbaum*
Partner
Paul, Weiss, Rifkind, Wharton & Garrison LLP

Richard A. Drucker*
Partner
Cornell Capital LLC

Louis J. Forster
General Partner
Green Visor Capital

Michael Froman
Vice Chairman and President, Strategic Growth
Mastercard

Carol Gluck*
George Sansom Professor of History
Columbia University

Maurice R. Greenberg
Chairman & CEO
C.V. Starr & Co., Inc.

Kenzo Hakuta
CEO, Founder and Director
Kenzo Digital Media, LLC

Yosuke Honjo
President & CEO
ITO EN (North America) INC.

Jun Horie
President & CEO
Marubeni America Corporation

Keishi Hotsuki
Chief Risk Officer
Morgan Stanley

Irfan Hussain
Partner
Goldman Sachs

Yoshihiro Hyakutome*
Managing Executive Officer, Head of the Americas Division
Sumitomo Mitsui Banking Corporation

Merit E. Janow
Dean, School of International and Public Affairs
Professor of Professional Practice, International Economic Law & International Affairs
Columbia University

Eri Kakuta
Partner
PJT Partners

Robert A. Karr
Principal
Joho Capital, LLC

Frederick H. Katayama
Anchor
Thomson Reuters

Mark Khalil
President & General Counsel
Sony Corporation of America

Keisuke (KO) Kirimoto
Vice President
Toyota Motor North America, Inc.

Kazuo Koshi*
Executive Chairman
MUFG Americas Holdings Corporation

Alan S. MacDonald*
Chief Client Officer, Vice Chairman
Citibank, N.A.

Jun Makihara*
Shuji Matsuura
Chairman & CEO
Mizuho Americas

Theodore Miller
President & CEO
Empire Entertainment Japan
President & CEO
Iroco Design Japan

Thomas K. Montag
Chief Operating Officer
Bank of America

Satoru Murase*
Partner
Mayer Brown LLP

Toby S. Myerson*
Chairman & CEO
Longsight Strategic Advisors LLC

Masaki Nakajima
President & CEO
Sumitomo Corporation of Americas

Samir A. Nangea
Partner/Principal
Ernst & Young LLP

Robert L. Noddin
Chairperson
AIG Japan Holdings KK

Hiroshi Ono
President & CEO
Nippon Steel North America, INC.

Joseph R. Perella*
Chairman Emeritus
Perella Weinberg Partners

Douglas L. Peterson*
President & CEO
S&P Global

Justin A. Rockefeller*
Addepar.com
Rockefeller Brothers Fund
The ImPact

David Snoddy
Founder & Managing Partner
Nezu Asia Capital Management

Joshua N. Solomon
Principal
New York City Department of Education

Naoki Suzuki
Chairman & CEO
Daiwa Capital Markets America Holdings Inc.

Yoshiteru (Terry) Suzuki
President & CEO
ORIX Corporation USA

Hidegori Takaoka
President & CEO
Mitsubishi Corporation (Americas)

Gary M. Talarico*
Managing Director
Cora Street Partners

Sayu Ueno
President & CEO
Mitsui & Co. (U.S.A.), Inc.

Joshua W. Walker, Ph.D. *
President & CEO
Japan Society
Ex officio

Adam F. Weissenberg
Vice Chairman, Chief Global Officer Audit & Assurance; Asia Pacific Leader, US Global Office
Deloitte US

Makoto Yoda
Deputy CEO
Tokio Marine North America, Inc.

Michael A. Zarcone
Chairman, MetLife Foundation
Executive Vice President, Head of Corporate Affairs, MetLife

PRESIDENT EMERITUS

Motoatsu Sakurai
Japan Society

Chairman
Vice Chair
Vice Chair
President & CEO
Secretary

Joseph R. Perella
Alan S. MacDonald
Kazuo Koshi
Joshua W. Walker, Ph.D.
Susan J. Onuma

SECRETARY

Susan J. Onuma
Partner
Ingram Yuzek Gainen Carroll & Bertolotti, LLP

HONORARY DIRECTORS

J. Thomas Schieffer
Founder & CEO
Envoy International LLC

H.E. Kanji Yamanouchi
Ambassador & Consul General of Japan in New York
Consulate General of Japan

LIFE DIRECTORS

Richard S. Lanier
President Emeritus
Asian Cultural Council

Deryck C. Maughan

Henry A. McKinnell, Jr.
Chairman
Accordia Global Health Foundation
Former Chairman of the Board & CEO
Pfizer Inc.

HONORARY PATRONS

H.E. Shinsuke J. Sugiyama
Ambassador of Japan to the United States

H.E. Koro Bessho
Ambassador, Permanent Representative of Japan to the United Nations

H.E. Kanji Yamanouchi
Ambassador & Consul General of Japan in New York



Japan Society is the premier organization connecting Japanese arts, culture, business, and society with audiences in New York and around the world.

At Japan Society, we are inspired by the Japanese concept of *kizuna* (絆)—forging deep connections to bind people together. We are committed to telling the story of Japan while strengthening connections within New York City and building new bridges beyond. In over 100 years of work, we’ve inspired generations by establishing ourselves as pioneers in supporting international exchanges in arts and culture, business and policy, as well as education between Japan and the U.S.

Now, more than ever, we strive to convene important conversations on topics that bind our two countries together, champion the next generation of innovative creators, promote mutual understanding, and serve as a trusted guide for people everywhere who seek to more fully appreciate the rich complexities and abundance of Japan.

From our New York headquarters, a landmark building designed by architect Junzo Yoshimura that opened to the public in 1971, we look forward to the years ahead, which will be defined by our digital and ideational impact through the *kizuna* that we build. Our future can only be enhanced by learning from our peers and engaging with our audiences, both near and afar. Please join us.

ジャパン・ソサエティー（JS）は、日本の芸術、文化、ビジネス、社会をニューヨーク及び世界の人々とつなぐ全米随一の規模を誇る日米交流団体であり、芸術と文化、公共政策、ビジネス、サステナビリティ、教育における革新的なプログラムを通じて、ニューヨーク市歴史的保存建築に指定されているJS本部ビルからだけでなく、オンライン形式でも情報・文化を発信しています。JSでは、「きずな（絆）」という言葉に触発され、革新的な次世代クリエイターの支援、日米相互理解の促進、日本の多様性を深く理解しようと願う世界の人々にとって信頼できる案内役となること、そして日米間の相互理解の促進と絆を深めることを目指しています。拠点とするニューヨーク市でのつながりを一層強化することに加え、米国内外での新たな架け橋の構築にも取り組んでいます。

*member of the Executive Committee For current Board list, please click [HERE](#).

—As of June 30, 2021

PRESIDENT'S MESSAGE

We're emerging from an intensely challenging period that has changed so much of what we do. And, along with these new opportunities, we're now players on a global stage. I'm excited for the new roads we will travel in the years ahead.

Dear Friends and Supporters,

During most of 2020-21, while the COVID-19 pandemic shutdown was in effect, Japan Society was closed to the public, with virtual events and other digital initiatives replacing physical programming. To comply with city and statewide mandates, we found ways to come together beyond our physical environment, and in doing so, came to appreciate the full power of our global community. As restrictions eased, we opened our doors safely to visitors on the 10-year anniversary of March 11 with *When Practice Becomes Form: Carpentry Tools from Japan*, symbolizing our resiliency in times of crisis, and then in late August, the hybrid 15th edition of *JAPAN CUTS: Festival of New Japanese Film* presented both streamed and in-theater films.

September marked the 50th anniversary of the opening of Japan House, Japan Society's landmarked headquarters building designed by Japanese modernist architect Junzo Yoshimura. On September 13, 1971, Japan Society formally opened the doors to its new building with five star-studded days of celebratory events. Their Imperial Highnesses Prince and Princess Hitachi were present at the ceremonies, bringing Japan's best wishes to the Society. On September 14, 2021 we held a limited capacity in-person reception for 150 of our 2021 Annual Dinner supporters, bringing Japan House to life in celebration of our building's history and the friends who have made the past 50 years possible.

At the opening of Japan House, Japan Society Chairman John D. Rockefeller 3rd declared that "Japan House is a visible expression of our faith that the communication of understanding between peoples is the creative art which underlies statecraft, commerce, and world peace." Today, Japan Society is inspired by the Japanese concept of *kizuna*—forging deep connections to bind people together, connecting American and Japanese people, cultures, and societies through a global lens. This is our mission, and I'm proud to be leading Japan Society today as we open a new era in our 115-year history.

Where does our path lead? Japan Society owns a calligraphic work by woodblock print artist Shiko Munakata that illuminates the word 道—*michi*—meaning "road, path, the way." Like Munakata's calligraphy of *michi*, or way forward, that we displayed to inspire us, we're emerging from an intensely challenging period that has changed so much of what we do. And, along with these new opportunities, we're now players on a global stage. I'm excited for the new roads we will travel in the years ahead.

At our virtual Annual Dinner in June Japan Society Award recipient private equity pioneer Henry Kravis, Co-Chairman and Co-CEO of KKR, remarked that in order to grow and to survive, "you have to keep innovating, you have to keep moving." Japan Society is a convener for the future. With your support, we, too, will overcome the tough challenges facing this world and the U.S.-Japan alliance, together.

To end on a high note, I'm very happy to report that in April 2021, our President Emeritus, Motoatsu Sakurai, was awarded The Order of the Rising Sun, Gold Rays with Neck Ribbon for his outstanding contributions to the promotion of mutual understanding and cultural exchange between Japan and the United States. Please join us in congratulating him for this important honor.

Here's to the next 50 years! The important work that we do would not be possible without your support. A sincere *arigato* and thank you to all!

Sincerely,
Joshua W. Walker, Ph.D.
President & CEO, Japan Society

理事長のメッセージ

ジャパン・ソサエティー(JS) サポーターの皆様

2020年3月から21年にかけて、JSでは、新型コロナウイルス感染症パンデミックの影響により臨時休館を余儀なくされました。館内で催す対面式プログラムに代わり、休館直後からオンライン・プログラムやその他のデジタル・イニシアチブが行われました。NY州や市の行政の規制を遵守するため、物理的な環境に囚われないプログラムの提供方法を模索し、JSの保持するグローバルなコミュニティの力を最大限に発揮することができました。規制が緩和された本年に入り、3・11東日本大震災10周年を迎えた日と同じくして「技が形になる時：日本の大工道具展」を開催し慎重な安全対策を講じた上でJSは再び一般来場者に扉を開きました。また、同年8月下旬には、第15回「JAPAN CUTS～ジャパン・カット～」が開催され、オンラインと劇場でのハイブリッド形式による映画上映が行われました。

JSはこの9月、モダニズム建築家の吉村順三氏が設計した本館ビル「ジャパン・ハウス」の開設50周年を迎えました。1971年9月13日、新築されたJSビルが正式にオープンし、それから5日間にわたって盛大な祝賀行事が行われました。同式典には常陸宮同妃両殿下ご臨席され、日本からのご祝辞を賜りました。そして、今年9月14日には2021年度アニエール・ディナーの支援者150名を招いた対面式レセプションを開催しました。過去50年の建物の歴史とJSを支えてきてくださった方々との親交を祝ったこの会は、ジャパン・ハウスに新たな命を吹き込みました。

当時のJS理事長であるジョン・D・ロックフェラー三世は、ジャパン・ハウスの開設にあたり、「ジャパン・ハウスは、人々間の理解を深めるコミュニケーションこそが、国家運営、商業、そして世界平和を支える創造的な芸術であるという我々の信念を目に見える形で表現したものである」と述べています。今日のJSは日本の「絆」という言葉に触発され、人と人とを結びつけるために深いつながりを築き、グローバルな視点でアメリカと日本の人々、文化、社会を結びつけることに努めています。これはJSの理念にもかうことであり、私は115年の歴史を経て新たな時代を切り開くJSを牽引していける事を誇りに思います。



JSの道はどこへつづくのか？JSには、木板画家の棟方志功氏による「道」と書かれた書道作品があります。私たちは今、棟方氏の作品を胸に、これまで培った活動に多くの変更を強いた激しい挑戦の時期から抜けだそうとしています。また、こうした新たな経験を経て、JSはグローバルな舞台で活躍するに至ります。私はこれからの更なる新しい道のりを楽しみにしています。

6月に開催されたオンラインでのアニエール・ディナー授賞式において、ジャパン・ソサエティー賞を受賞したKKRの共同創設者兼共同最高経営責任者ヘンリー・クラビス氏は、「成長し、生き残るためには、革新し続け、進み続けなければならない」と述べました。JSは、未来のために人と人をつなぐ団体です。皆様のご支援により、世界、そして日米の絆が直面する困難な課題を共に乗り越えていきたいと思っています。

最後になりましたが、2021年4月、櫻井本篤前理事長が、日本と米国の相互理解と文化交流の促進に多大な貢献をしたことを受け、旭日中綬章を受章されたことをご報告いたします。櫻井氏の受賞を心よりお祝い申し上げます。

これからの50年間に共に歩みましょう。私たちが行っている重要な仕事は、皆様のご支援なしには実現できません。皆様に心からの感謝とお礼を申し上げます。

ジャパン・ソサエティー
理事長
ジョシュア・W・ウォーカー (政治学博士)

ANNUAL DINNER

2021年度 ジャパン・ソサエティー (JS) アニュアル・ディナー授賞式

Japan Society's 2021 Annual Dinner, Connecting Across Space and Time, was held in two parts. On June 22, a star-studded online program raised over \$1.3 million. The program included a message from Japanese Prime Minister Yoshihide Suga, followed by a conversation between former JAXA astronaut Naoko Yamazaki and Ambassador Caroline Kennedy—marking the 60th anniversary of President John F. Kennedy's Moonshot Address. After a performance from Japan's Ryoma Quartet, a Fireside Chat brought together Japan Society Chairman Joseph Perella, Chairman Emeritus, Perella Weinberg Partners and private equity pioneer Henry Kravis, Co-Chairman and Co-CEO of KKR—recipient of this year's Japan Society Award.



ジャパン・ソサエティー(JS) 2021年度 アニュアル・ディナー授賞式は2部構成で開催されました。第1部は6月22日、著名ゲストをお迎えしてオンライン上で行われ、130万ドル以上のご寄付を頂戴しました。本プログラムでは、菅義偉 日本国内閣総理大臣からメッセージをいただくと共に、ケネディ大統領の「ムーンショット」演説から60周年を記念し、元JAXA（宇宙航空研究開発機構）宇宙飛行士である山崎直子氏と元駐日米国大使のキャロライン・ケネディー氏による対談が行われました。亀馬四重奏による演奏の後、JS会長のジョセフ・ペレラ氏（Perella Weinberg Partners名誉会長）と、本年度ジャパン・ソサエティー賞を受賞したKKRの共同創設者兼共同最高経営責任者ヘンリー・クラビス氏によるファイアースайд・チャットが行われました。

On September 14, Annual Dinner supporters enjoyed a limited capacity in-person networking reception celebrating the 50th anniversary of the opening of the Society's landmarked headquarters building.

第2部として9月14日、JS本館設立50周年の記念して、アニュアル・ディナーにご参加いただいた方々との交流会を開催しました。



NICHIBEI GLOBAL TALKS

日米グローバル・トークス

PASSING THE TORCH

特別

A bilingual video series of U.S.-Japan dialogues on global affairs, moderated by Joshua W. Walker, Ph.D., President and CEO, Japan Society.

本シリーズでは、ジョシュア・ウォーカーJS理事長が司会を務め、国際社会におけるトピックに関する対話をバイリンガルでお届けしました。

In celebration of the Tokyo Summer Games, Japan Society presented *Passing the Torch*, a special online series reflecting on sports in Japan. As the Olympic flame began its journey across Japan, the series kicked off in the spring with talks on judo, martial arts classes for kids and sports-themed film screenings. For the second wave of the series—some events occurred after the fiscal year ended on June 30, 2021 but are included in our 2020-21 report—we honed in on the mindset of superstar athletes.

JSでは、東京五輪を記念して、日本のスポーツを振り返るオンライン特別シリーズ「Passing the Torch～光をつなぐ」を開催しました。夏季五輪の聖火が日本中を駆け巡る中、本シリーズは春にスタートし、柔道に関するトークや子供向けの武道教室、スポーツをテーマにした映画の上映などを行いました。シリーズの第2弾では、スーパースター選手のスポーツマン精神に焦点を当てました。*本シリーズイベントの一部は2020-21年度末である2021年6月30日以降に実施しましたが、2020-21年度の報告書に記載されています。

Guests:

Miho Kurosaki, *Head of Japan and Tokyo Research Office*, BloombergNEF

Paul Bodnar, *Managing Director*, Rocky Mountain Institute

Kazumi Matsui, *Mayor*, Hiroshima City

Jennifer Lind, *Associate Professor, Department of Government*, Dartmouth College

Satoshi Masuoka, *Director*, RIKEN Center for Computational Science

Dr. Stefanie Chias, *Vice President and General Manager*, RHEL Business Unit, Red Hat

Mari Yoshitaka, Ph.D., *Principal Sustainability Strategist*, Mitsubishi UFJ Research and Consulting

Billy Nauman, *Reporter*, Financial Times

Ida Liu, *Head of City Private Bank North America*

Mari Kogiso, *Director, Diversity and Inclusion*, Fast Retailing

Events:

Artificial Elegance: Japanese Prosthetics for World-Class Athletes with **Shunji Yamanaka**.

The Fight for Women's Judo: Rusty Kanokogi's Story with **Jean Kanokogi, Ph.D**

Children's Day from Home: Health, Happiness & Sports!

Streamed screenings of **Takahisa Zeze's** *The Chrysanthemum and the Guillotine*, **Kimio Watanabe's** *Tokyo Paralympics: Festival of Love and Glory* and **Kon Ichikawa's** *Youth: The 50th National High School Baseball Tournament*

Kudo Kids Book Event with **Maia Shibutani** and **Alex Shibutani**

The Inside Edge: Skating Champions from Japan & the U.S. with **Miki Ando; Satoko Miyahara; Mirai Nagasu; Yuka Sato** and moderator **Nancy A. Kerrigan**

Survival Japanese Workshop

Let's Play Two: Baseball in Japan & the U.S. with **Warren Cromartie, Matt Murton, Robert Whiting** and moderator **Yuriko Gamo Romer**

TEA TIME

ティー・タイム

TEN YEARS LATER: REMEMBERING 3.11

10年後：3・11 を忘れない

The second season of our *Tea Time* video conversation series celebrated culture in Japan and U.S.-Japan cultural exchanges. Moderated by Joshua W. Walker, Ph.D., President and CEO, Japan Society.

The third season of Japan Society's *Tea Time* video series marked the events of March 11, 2011 and considered lessons learned to address the challenges of a global pandemic. Moderated by Joshua W. Walker, Ph.D., President and CEO, Japan Society. Part of the *Ten Years Later: Remembering 3.11* series.

2020 Guests:

Soichi Noguchi, *JAXA astronaut*

Akiko Katayama, *food writer*

Matt Alt, *author*

Susan Miyagi McCormac, *founder, editor, and writer, JapanCulture•NYC*

Takeshi Kamiya, *HKS Principal and Director, Urban Design*

Miho Walsh, *former Executive Director, Asian Cultural Council*

YouTube上で配信しているビデオ・シリーズ「ティー・タイム シーズン2」では、ジョシュア・ウォーカーJS理事長が司会を務め、日本文化と日米文化交流に関連したテーマで専門家らとの対話を聞きながらお茶の時間を楽しむことができるオンライン空間を提供しています。

ビデオ・シリーズ「ティー・タイム シーズン3」では、2011年3月11日に東北地方を襲った東日本大震災、そして原子力発電所の事故を振り返り、世界的な新型コロナパンデミックに対処するための教訓を考察しました。本シーズンは、「10年後：3・11を忘れない（Ten Years Later: Remembering 3.11）」シリーズの一環です。

2021 Guests:

Ambassador Kanji Yamanouchi, *Consul General of Japan in New York*

Kikka Hanazawa, *investor and philanthropist*

Megumi Ishimoto, *Executive Director and Co-Founder, NPO Women's Eye*

General Ryoichi Oriki, JSDF (ret.)

John Roos, *former United States Ambassador to Japan*

Suzanne Basalla, *President and CEO of the U.S.-Japan Council*

Ten years after the Great East Japan Earthquake, tsunami and nuclear disaster of March 11, 2011, we invited our community to remember those who were lost, and to look toward Tohoku's continued recovery. We also extended our sincere appreciation to everyone who donated to the Japan Earthquake Relief Fund (JERF), which raised over \$14 million from over 24,600 donors from all 50 U.S. states and 55 countries. This special series of programs and videos reported on JERF's contributions to Tohoku's recovery, highlighting stories of Tohoku's resiliency, the bravery and initiative of everyone who responded to unprecedented challenges, the strength of U.S.-Japan relations, and human generosity and goodwill.

Events:

Live online symposium *Resiliency & Recovery: A U.S.-Japan Dialogue Ten Years after 3.11*

Online contemporary theater *Ludic Proxy: Fukushima*

The Japan Earthquake Relief Fund: March 12, 2011—Present, an interview with Ambassador Motoatsu Sakurai, President of Japan Society from 2009—2019, who established the Japan Earthquake Relief Fund

Three U.S.-Japan dialogues between social entrepreneurs from Tohoku and their counterparts in New Orleans, LA and Wilmington, OH

- U.S.-Japan Dialogues Between Social Innovators—Andrea Chen and Tomoyuki Wada
- U.S.-Japan Dialogues Between Social Innovators—Yosuke Komatsu and Allison Plyer
- U.S.-Japan Dialogues Between Social Innovators—Taylor Stuckert and Kyoko Watanabe, with Toru Hiji)

Tea Time Season #3

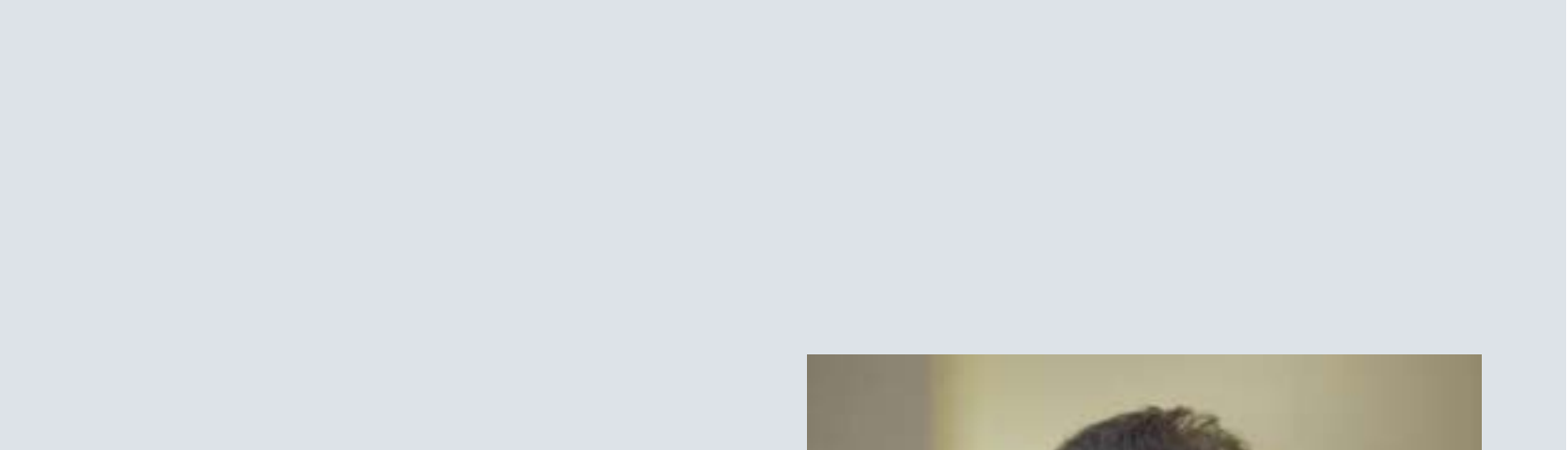
2011年3月11日に発生した東日本大震災から10年が経過した本年、亡くなった方々に追悼の意を表し、東北の継続的な復興に目を向けるよう、地域社会に呼びかけました。また、東日本大震災救援基金（JERF）には、米国50州および55カ国の24,600人以上の方々から1,400万ドルを超える寄付が寄せられ、これに感謝の意を表しました。この特別番組とビデオシリーズでは、東北の復興に貢献したJERFの活動を報告し、東北の回復力、未曾有の困難に立ち向かった人々の勇気とイニシアチブ、日米関係の強さ、そして人間の寛大さと善意を紹介しました。

BUSINESS & POLICY

The Business & Policy Program hosts unique public and private programs for the international business and policy community, which promote reciprocal exchange and deep engagement on issues that define U.S.-Japan relations within a global context.

ビジネス&政策

日米の政財界より著名人を招聘して会議、講演会、パネル討論会を開催。国際ビジネスや政策に携わる人々や国際的な課題に関心を寄せる人々を対象に、日本・アジア・米国における諸問題をグローバルな視点から考察することを目的としています。



All Business & Policy programs were held virtually during 2020-21 and included high-level invitational events such as a CEO Roundtable with Kenichiro Yoshida, Chairman, President & CEO, Sony Corporation and Douglas L. Peterson, President & CEO, S&P Global.

EDUCATION & FAMILY

The Education Program sparks interest in Japan through a suite of programs including the Japan Society Junior Fellows Leadership Program as well as family, school and educator programs. Our interactive website, *About Japan: A Teacher's Resource*, provides educational resources to users throughout the world.

aboutjapan.japansociety.org

教育

米国の初・中等教育者を対象にしたセミナーや学校向けギャラリー・ツアー、また次世代リーダーの育成と国際交流を促進する日米の高校生対象のリーダーシップ研修などを通じて、日米相互理解や日本文化の学習の関心を高めることを目的にしています。教育者向けのウェブサイト(AboutJAPAN.JAPANSOCIETY.ORG)では、日本に関する英語の教材情報を提供。ファミリー・プログラムでは、子供向けの日本語クラスや年中行事などの参加型のプログラムを通して日本を紹介しています。



“If I were to express my experience as being a Junior Fellow with one word, it would be life-changing.”

— **2021 Japanese Junior Fellow**



“I really learned a lot. It was wonderful for me to revisit Japan and to share this with others who are interested in the same things.”

— **Teacher Training Participant, NY**

Due to the pandemic, the Japan Society Junior Fellows Program was held online in 2020-21 for both Japanese and American Junior Fellows.

Momotaro (Peach Boy), the first video in a new Japanese *Kamishibai Folktale* series, was created by Japan Society in collaboration with Japan House São Paulo.

FILM

Japan Society screens a diverse selection of classic and contemporary Japanese cinema throughout the year—including retrospectives of seminal directors, thematic series and special screenings of international, U.S. and NY premieres—and organizes *JAPAN CUTS: Festival of New Japanese Film*, the largest festival of its kind in North America.

映画

著名な映画はもとより、米国未公開作品や実験映画、ドキュメンタリーやアニメなど、様々な切り口で日本映画の全容を紹介。通常の上映施設とは一線を画した長年の実績によって、米国における日本映画上映の中核的存在として広く知られています。また日本から監督や俳優を招聘することで、作り手と米国の観客との対話づくりに力を注いでいます。

“A perfectly cinephilic survey of the century so far that favors the deep cut over the known masterpiece.”

— ***The Brooklyn Rail on 21st Century Japan: Films from 2001-2020***



Online and in-theater. Japan Society's annual summer film festival *JAPAN CUTS* returned for its 15th edition as a hybrid online and in-theater event, presenting an exciting and diverse slate of contemporary Japanese cinema screening on demand, along with selected onsite screenings plus Instagram Live discussions. Yu Aoi, star of *Wife of a Spy* and the face of Japanese cinema in the 21st century, received the CUT ABOVE Award for outstanding achievement in Japanese cinema. The festival's juried section, Next Generation, awarded Tatsuya Yamanishi (*Mari and Mari*) the Obayashi Prize for the most accomplished title, with the Next Generation Special Mention going to Kosuke Nakahama (B/B).



“You couldn’t ask for more from a festival than the magnificent JAPAN CUTS... one of the best ways to see what is making waves in Japan”

— **Richard Gray, *The Reel Bits*, on *JAPAN CUTS 2021***

GALLERY

Japan Society Gallery is the premier institution in the United States for the presentation of Japanese art and related cultural themes, with groundbreaking exhibitions that foster a broader understanding and appreciation of Japan's contributions to global artistic heritage. *From Here to There*, September 24, 2020—January 21, 2021 and *When Practice Becomes Form: Carpentry Tools from Japan*, March 11—July 11, 2021 were both organized by Japan Society.

展覧会

長い伝統に根差した美術から、最新の動向を反映する現代美術に至る幅広い芸術表現を紹介する展覧会を開催。日本、アジア、欧米各地の美術館や財団、あるいは傑出したコレクションなどと連携した質の高い出品作品によって構成される企画は米国における日本の視覚芸術紹介の拠点として有数の実績を誇っています。また、講演会、パフォーマンス、鑑賞ツアー、ワークショップなど、日本の多様な美術表現への理解を深める斬新なプログラムも催しています。



“Japanese carpentry tools have never been so worthy of your attention.”

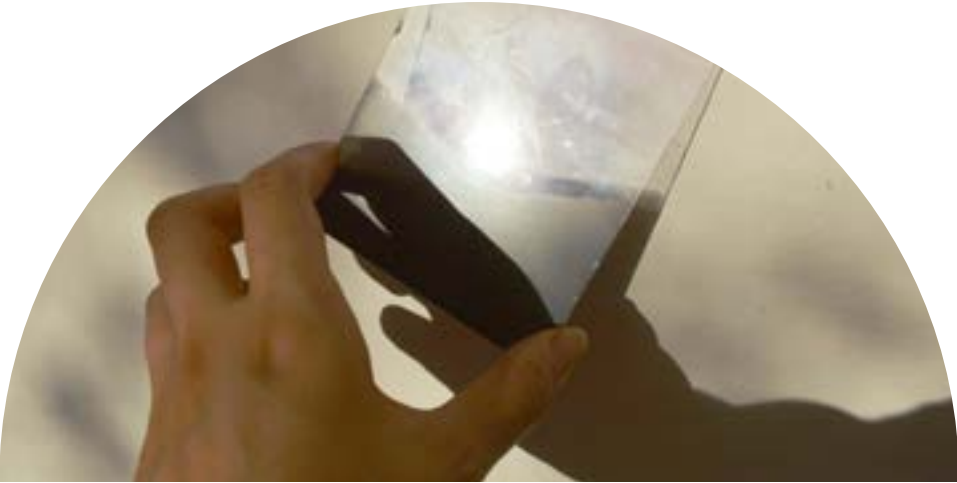
— Jane Levere,
Architectural Digest
on *When Practice Becomes Form*



From Here to There was Japan Society's first online project initiated as a testing ground for artistic practice, dialogue and production, spanning drawing, film, performance and photography in commissions by three contemporary artists: Nobutaka Aozaki (New York), Hanako Murakami (Paris) and Aki Sasamoto (New York).

“The geometric ingenuity is made vivid by the superb lighting, giving us a solemnly dark chamber with carefully arranged spotlights played on a grid of low tables on which the wood beams stand erect and flaunt their joints. In the space [...] they are as expressive as a Brancusi.”

— Michael J. Lewis,
The Wall Street Journal
on *When Practice Becomes Form*



LANGUAGE CENTER

The Language Center offers 13 comprehensive levels of Japanese with specialized courses, workshops and intensives including shodo (Japanese calligraphy), English for native Japanese speakers, a Japanese language teacher training program, a Crash Course for Travelers, Japanese Business Etiquette and language exchange events. Private lessons are available at all levels, and offsite Japanese courses and etiquette workshops are offered to local companies upon request.

語学センター

米国最大規模の日本語教育機関として、受講者の能力にあわせた13段階の日本語教室をはじめ、日本語能力試験準備コース、漢字、日本のドラマ、日本の時事ニュース、短編小説、ツイッターの世界、ビジネス用敬語、漫画で読む日本社会、アニメなど、専門性を持たせたクラスも完備しており、年間約360の講座を開講し、のべ3700人以上が受講しています。また、書道、英会話、日本語教師養成講座、週末集中講座の他に、語学交換イベント、初級日本語体験講座、ひらがな、カタカナ、漢字、オノマトペのワークショップ、ならびにサバイバル日本語、旅行者向けの集中講座や日本のビジネスエチケットの講座を設けています。その他、企業派遣プログラムやプライベートレッスンも提供しています。



Virtual language classes in 2020-21 led to record registration. In total, 360 courses, workshops and events were offered to over 3,700 participants during our 20-21 fiscal year. All programs were held online because of the pandemic.



The C.V. Starr Library contains approximately 14,000 volumes on Japan and U.S.-Japan relations, primarily in English. Use of the library is limited to Japan Society members and Language Center students.

PERFORMING ARTS

The Performing Arts Program introduces performers from Japan's contemporary and traditional music dance and theater scenes and commissions U.S.-based performing artists to create works on themes relating to Japan. Many distinguished artists have performed in the Society's 260-seat theater and on Society-produced North American tours.



舞台公演

最高峰の演者による古典芸能から、最先端の演劇、ダンス、音楽まで、第一線の日本の舞台作品と舞台芸術家を米国に招聘。JS館内260席の劇場で年間を通じて主催上演し、また北米ツアーをプロデュースします。日本の若手演出家・振付家には国際的キャリアへの登竜門として、また米国のアーティストに対しては日本をテーマにした新作委嘱の機関として、日米双方の舞台芸術界に比類の無い貢献をしています。

During the 2020-21 season, we continued to adapt to the challenges presented by the COVID-19 pandemic and are proud to have brought six exceptional virtual performing arts programs to people at home, not just in New York City, but around the world. For our final show of the season, we welcomed the public back through the doors of our auditorium for an innovative Virtual Reality (VR) production.



“The inspiration for its creation is powerful. It also reminds us of how difficult it is for theatre, live or streaming, to confront such soul-crushing circumstances.”

— **Samuel L. Leiter,**
***Theater Pizzazz* on**
Ludic Proxy: Fukushima

“Virtual reality is as yet a plaything in the theater, not really mature as an expressive device, and yet its use in *The Dark Master* emphasizes the isolation and interiority of the story and also of life during the pandemic.”

— **Jesse Green,**
The New York Times
on *The Dark Master*

TALKS+

Talks+ introduces vital issues and trends in Japanese culture, inviting leading pioneers and professionals to engage with and explore diverse topics including Japanese art, cuisine , innovation and technology. Events are hosted in a variety of formats. At on-site programs, audiences interact with speakers during intimate lectures, view onstage presentations and meet speakers during post-event receptions. New virtual programming introduces Japanese trends and traditions to a global audience through interactive online talks, workshops and classes.

トーク+

デザイン、食、文芸、ポップ・カルチャー、テクノロジー、伝統工芸等の文化一般から教育や環境などの社会問題に至るまで、幅広いテーマを取り上げて米国の人々に日本の多様な面を紹介するプログラム。著名人や識者・専門家を招いたパネルトークからデモンストレーションや試食を交えた講演会やワークショップまで、テーマに応じた様々な形態で開催しています。会場での対面イベントでは試食やミニ展覧会を交えたイベントを開催し、オンラインではワークショップやトークイベント等を世界中から参加する有識者と共に世界中のオーディエンスに向け発信しています。

“It passed my expectations.
I really learned a lot from his
perspective and philosophy.
I enjoyed the webinar and
the workshop”

— *Habit-Making* attendee



At our virtual 24th Annual Sake Event sake brewers shared their stories in their own words, including behind-the-scenes details about their sake brewing methods and their personal tips for enjoying sake at home.



“I loved that the lecture was quite
scholarly yet spoke to a wide
audience, and that the chat was
open to all sorts of comments.”

— *Painting Edo* attendee

TO OUR DIVERSE COMMUNITY OF SUPPORTERS—THANK YOU!

Who supports Japan Society?

Japan Society is supported by our individual members, corporate members, Circle of Friends members, Legacy Circle members, corporate sponsors, and foundation and government grants.

Join us! japansociety.org/join
Donate! japansociety.org/donate

CIRCLE OF FRIENDS

Director's Circle

Anonymous (E)
Anonymous Family Foundation
Mark Steven Barres
Raphael and Jane Bernstein (G)
Mr. and Mrs. Randall Chafetz
Helen and Kenneth A. Cowin (P)
Peggy and Dick Danziger (G)
Doug and Teresa Peterson (PA)
Masako H. Shinn (G) (F)
Dr. Emiko Terasaki
William K. Tomita (G)

Leadership Circle

Fred Eychaner
Ronda Gail and Michael Kasbar
The Globus Family (F)
Mark F. Goldfield and Mary E. Hatch
Thierry Porté and Yasko Tashiro (G)
Starry Night Fund
Dr. Jeanette C. Takamura (PA)

Benefactor Circle

Mrs. Kiyoko Ohata Brown
Alejandro M. Carosso
Barbara Bertozzi Castelli (G)
Mrs. Jane B. DeBevoise (G)
Ms. Georgia Dorey (G)
Ms. Anne N. Edwards (G)
Margot Paul Ernst (G)
Mr. George Gallagher
Brendan and Jenifer Garvey
Laurel Gonsalves (G) (F)
Mr. Christopher Hong
David S. Howe (G) (F)
Miki Kashiwagi and Thomas Bingham (G)
Shigesuke and Noriko Kashiwagi (G)
Akiko Koide and Shohei Koide (F)
Mr. Taishi Kushiro
Mr. Peter Lane (G)
David T. Libertson/Ronin Gallery NYC (G)
Geoff and Fumi Matters (F)
Joan B. Mirviss (G)
Hiroko Onoyama (P) (E)
Richard and Momona Royce (G)
Fredric T. Schneider (G)
Mr. Frederick H. Schultz and
Ms. Carole Aoki (G)
Paul and Yoshiko Sheard
Ms. Matsuko Shibuya
Sarah Billinghamurst Solomon and
Howard Solomon (P)
Dr. and Mrs. Carl F. Taeusch II (P)
Mr. David Toberisky (F)

Roger L. Weston (G)
Dian Woodner (G)
Natsuko Yamazaki

Patron Circle

Anonymous (5)
An Anonymous Fund at
Aspen Community Foundation
Mr. Joseph L. Albert
Ms. Hope Aldrich and Mr. Michael B. Jeffers
Miki Ando
Mr. Andrew Barker
Mr. Alan L. Beller
Graeme Birchall and Katya Hansen
Jim and Yuko Brumm
Dr. William H. Carson, M.D.
Mr. and Mrs. Jeffrey Catanzaro
Don Chen
Mr. Seth Coren
Mr. Robert Cory and Mr. Shuichiro Takeda
Warren Cromartie
Dr. Raymond Daddazio and
Ms. Sawako Yamaguchi
Nachiketa Das
Alec R. Dawson, Esq.
Mrs. Anne Noel Jones Dawson
Mr. Stuart Eisenkraft and
Ms. Marilyn Hoffman
Ms. Mya Fisher
Jennifer Gordon and Richard Shanley
Wendy and Leeds Gulick
Lesley Nan Haberman
Mr. Tobias Harris
Mr. Johnathan Hayden
Mr. George Hirose
Glenn Hubbard
Ms. Sumiko Ito and Mr. Donald Allison
Dale A. Jenkins
Dr. Bic Kanayjorn
Mr. Frederick H. Katayama
Nancy Kerrigan
Mr. Axel Kramer and Ms. Patricia Hallstein
Mr. and Mrs. Henry R. Kravis
Frodo and Sam Krull
Paula S. Lawrence (P)
Leon Lee
Mr. Samuel Lee
Edward and Monica Lenci
Dr. Stephen and Mrs. Michiko Levine (P)
Mrs. Jane Lombard
Ms. Janine Luke
Mr. Steve Martinez
Masu Hiroshi Masuyama
Mrs. Monika McLennan
Satoko Miyahara

Satoko Miyake and Aaron Nir
Etsuko O. Morris
Hiromi Motohashi
Miyeko Murase (G)
Matt Murton
Mirai Nagasu
Dr. Tatsuji Namba (F)
Marjorie Neuwirth (P)
Edward and Ann Niehoff
Mrs. Edith K. Payne
Pamela Perlman (PA)
Mr. Eugene E. Reilly
David and Susan Rockefeller
Ms. Sascha Rockefeller
Michael Romano
Yuriko Gamo Romer
Mr. Jonathan Rouner
Mr. Hiroshi Sarumida
Janelle Sasaki
Yuka Sato
Lyndley and Samuel Schwab (PA)
Rinku Sen
Alex Shibutani
Maia Shibutani
Dr. Ling Yu Shih
Ms. Donna Sittmann
Mr. Michael W. Sonnenfeldt
Dr. Patricia M. Sovern
Mr. Prasan Srinivasan
Her Imperial Highness Princess Takamado
Kiyoka Tanaka
Nora and David Tezanos
Bo Thao-Urabe
Nancy & Joe Walker (P)
Robert Whiting
Takayoshi Wiesner and Pan Gu (E)
Kumiko Yoshii
Ivan Zimmerman and Taryn Higashi

(E) Education
(F) Friends of Film
(G) Friends of Gallery
(PA) Friends of Performing Arts

SUPPORTERS*

July 1, 2020—June 30, 2021

\$150,000 and above

Citi
Dentsu Incorporated
Visual Industry Promotion Organization

\$100,000 and above

Anonymous
An Anonymous Family Foundation
Deloitte
Mizuho Americas
MUFG (Mitsubishi UFJ Financial Group)
Toyota

\$75,000 and above

AIG
All Nippon Airways Co., Ltd.
Japan Airlines
MetLife Foundation
Mitsubishi Corporation (Americas)
Mitsui & Co. (U.S.A.), Inc.
New York City Department of Cultural Affairs
ORIX Corporation USA
Sony Corporation of America
Sumitomo Corporation of Americas

\$50,000 and above

Bank of America
Empire Entertainment Japan
ITO EN (North America) INC.
JETRO New York
Yumi Mera Kuwana+
Jun Makihara and Megumi Oka
Mastercard
Morgan Stanley
Nomura America Foundation
NYC COVID-19 Response and Impact Fund in The New York Community Trust
Amy and Joseph Perella
Perella Weinberg Partners
Doug and Teresa Peterson
Sumitomo Mitsui Banking Corporation
The Starr Foundation
Tokio Marine Group
Xcoal Energy & Resources

\$25,000 and above

Anonymous
Bain Capital
Daikin U.S. Corporation
Daiwa Capital Markets America Holdings Inc.
Mr. Philip M. Darivoff/ Vibrant Capital Partners
E. Rhodes and Leona B. Carpenter Foundation
Mr. Louis J. Forster
Hitachi America, Ltd.
ITOCHU International Inc.
KPMG LLP
Marubeni America Corporation
Mayer Brown LLP
MetLife
Morgan, Lewis & Bockius LLP
MUFG Securities Americas Inc.
Satoru and Hiroko Murase+
New York State Council on the Arts
Nezu Asia Capital Management LLC
Nippon Steel North America, Inc.
Paul, Weiss, Rifkind, Wharton & Garrison LLP
PJT Partners

Dr. Garry Rayant and Dr. Kathy Fields
Masako H. Shinn
Siris Capital Group, LLC
Diane and Marc Spilker
Sullivan & Cromwell LLP
Toyota Tsusho America, Inc.
Takenaka Carpentry Tools Museum
TAKENAKA CORPORATION

\$15,000 and above

Agency for Cultural Affairs, Government of Japan through the Japan Arts Council
Raphael and Jane Bernstein
Cornell Capital LLC
Peggy and Dick Danziger
The Estée Lauder Companies Inc.
Mr. Keishi Hotsuki
Kanagawa Prefectural Government
Kohn Pedersen Fox Associates PC
McKinsey & Company
Mr. Toby S. Myerson
Amy and Joseph Perella
The Rockefeller Group
Sojitz Corporation of America
Joshua and Geula Solomon
William K. Tomita^M
Toshiba International Foundation
Wendy Obernauer Foundation

\$10,000 and above

Mr. and Mrs. Randall Chafetz
Consulate General of Japan in New York
Helen and Kenneth A. Cowin
Ariel and Cathy Deckelbaum
Mr. Richard A. Drucker
Eisai Inc.
The Fan Fox and Leslie R. Samuels Foundation, Inc.
Finsbury Glover Hering
The Japan Foundation Center for Global Partnership
Ms. Eri Kakuta
Kikkoman Corporation
Eugene and Carol Ludwig
Mr. Alan S. MacDonald
Mitsubishi Chemical Holdings America, Inc.
Mizkan Holdings Co., Ltd.
Mr. Robert L. Noddin
Orrick, Herrington & Sutcliffe LLP
PwC
Shiseido Americas
Sidley Austin LLP
Emiko Terasaki



+ Japan Society gratefully acknowledges donors who have made endowment or capital project contributions.

^M Japan Society gratefully acknowledges donors who have had their contributions matched by their employer.

* Gifts do not include contributions to Japan Society's Japan Earthquake Relief Fund which was closed on December 31, 2020.

SUPPORTERS* (continued)

July 1, 2020—June 30, 2021

\$5,000 and above
Anonymous
Advantage Partners, Inc.
Agora Gallery
Bank of Japan
Bloomberg
Brother International Corporation
Canon U.S.A., Inc.
Davis Polk & Wardwell LLP
Epstein Becker & Green, P.C.
Gaia Holistic Health Foundation
Mark F. Goldfield and Mary E. Hatch
Mr. Christopher Hong^M
Government of Japan
Indus Capital Partners, LLC
Littler Mendelson P.C.
Mitsui Fudosan America, Inc.
MoloLamken LLP
Nagashima Ohno & Tsunematsu NY LLP
National Association of Japan-America Societies, Inc.
Nikkei America, Inc.
Nikko Asset Management Americas, Inc.
The Norinchukin Foundation
NTT America, Inc.
NTT DOCOMO USA, INC.
Sompo International
Starry Night Fund
Suntory America Inc.
Carl and Chizuko Taeusch^M
Gary M. Talarico and Linda W. Filardi
The Tokyo Club
Toray Industries (America), Inc.
Warner Media Group

\$2,500 and above
Aozora Bank, Ltd.
The Asahi Shimbun Foundation
Becker, Glynn, Muffly, Chassin & Hosinski LLP
Daiichi Sankyo, Inc.
DBJ Americas Inc.
Mrs. Jane B. DeBevoise
DNP Corporation USA
ENEOS Americas, Inc.
Ernst & Young LLP
Margot Paul Ernst
Freshfields Bruckhaus Deringer LLP
FUJIFILM Holdings America Corporation
Fujisankei Communications International, Inc.
Brendan and Jenifer Garvey
Mr. Steven Giordano
Professor Carol Gluck

Mr. Juan Ruiz Gomez
Laurel Gonsalves
The Harkness Foundation for Dance, Inc.
HKS, Inc.
Honda North America, Inc.
David S. Howe
IHI Americas Inc.
J.C.C. Fund of the Japanese Chamber of Commerce and Industry
Merit E. Janow^M
Japan Bank for International Cooperation
The Japan Foundation, Los Angeles
The Japan Foundation, New York
Japan Local Government Center
Japan National Tourism Organization
Dale A. Jenkins
Jiji Press America, Ltd.
Kaneka Americas Holding, Inc.
Kawasaki Heavy Industries (USA), Inc.
Keefe, Bruyette & Woods, A Stifel Company
Kikkoman Sales USA, Inc.
Kodansha USA Publishing, LLC
Akiko Koide and Shohei Koide
Kyodo News America, Inc.
Peter Lane
David T. Libertson/ Ronin Gallery NYC
Bruce S. Loeb⁺
Meiji Yasuda America Incorporated
Milbank LLP
Mirai SV LLC
Mitsubishi Gas Chemical America, Inc.
Mitsubishi UFJ Trust and Banking Corporation
Monex Group, Inc.
NHK CosmoMedia America, Inc.
NHK General Bureau for America
Nikon Inc.
Nippon Life Group
Nishimura & Asahi NY LLP
Nitto, Inc.
The Norinchukin Bank
Office of the City of Yokohama Representative to the Americas
Okabe & Yampolsky Translations, LLC
Hiroko Onoyama
Orient Corporation of America
Permanent Mission of Japan to the United Nations
Pillsbury Winthrop Shaw Pittman LLP
The Saison Foundation
SB Telecom America Corp.
Subaru of America, Inc.
Alan M. Suhonen^{*}
Sumitomo Chemical America, Inc.
Sumitomo Mitsui Trust Bank, Limited
TAK Development, Inc.

The Taipei Cultural Center of TECO in New York
Mr. David Toberisky
Tokai Tokyo Securities (USA), Inc.
TOKYU HOTELS CO., LTD. New York Office
TV Asahi America, Inc.
UNIQLO USA, LLC
Wacoal America, Inc.
Yen Press
The Yomiuri Shimbun

\$1,000 and above
Anonymous^M
Anonymous (3)
An Anonymous Fund at Aspen Community Foundation
Ms. Janet Abraham
Alan L. Beller
Graeme Birchall and Katya Hansen
Jim and Yuko Brumm
Alejandro M. Carosso
Barbara Bertozzi Castelli
Mr. and Mrs. Jeffrey Catanzaro
Mr. Seth Coren
Mr. Robert Cory and Mr. Shuichiro Takeda
Professor Gerald L. Curtis
Dr. Raymond Daddazio and Ms. Sawako Yamaguchi
Mrs. Anne Noel Jones Dawson
Anne N. Edwards
Mr. Stuart Eisenkraft and Ms. Marilyn Hoffman
Mr. George Gallagher
Jennifer Gordon and Richard Shanley
Holly and Eric Grannan
Wendy and Leeds Gulick
Mr. George Hirose
Glenn Hubbard
Ms. Sumiko Ito and Mr. Donald Allison
JTB Cultural Exchange Corporation
Bic Kanayjorn
Shigesuke and Noriko Kashiwagi
Mr. Frederick H. Katayama^M
Mr. and Mrs. Seiji Konno
Axel Kramer and Patricia Hallstein
Frodo and Sam Krull
Mr. Tim Kubarych
Mr. Taishi Kushiro
Mr. Samuel Lee
Emily A. Lemer
Monica and Edward Lenci
Dr. Stephen and Mrs. Michiko Levine
Jane Lombard

Masu Hiroshi Masuyama
Geoff and Fumi Matters^M
Ms. Sue Miller
Joan B. Mirviss
Satoko Miyake and Aaron Nir
Etsuko O. Morris
Miyeko Murase
NEC Corporation of America
Marjorie Neuwirth
Edward and Ann Niehoff
Susan J. Onuma, Esq.
Edith K. Payne
Eugene E. Reilly and Marlene Rosenthal
Mr. Michael N. Reynnells^M
David and Susan Rockefeller
Indre and Justin Rockefeller
Michael Romano
Mr. Jonathan Rouner
Royal Little Family Foundation
Richard and Momona Royce
Mr. and Mrs. Motoatsu Sakurai
Sapporo U.S.A., Inc.
Frederick H. Schultz and Carole Aoki
Mrs. Lyndley M. Schwab and Mr. Samuel C. Schwab
Paul and Yoshiko Sheard
Ms. Matsuko Shibuya
Dr. Ling Yu Shih
Sojitz Foundation
Michael W. Sonnenfeldt
Dr. Patricia M. Sovern
Mr. Naoki Suzuki
Dr. Jeanette C. Takamura
Kiyoka Tanaka
Nora and David Tezanos
Nancy and Joe Walker
Mr. Adam F. Weissenberg
Roger L. Weston
Windels Marx Lane & Mittendorf, LLP
Robert T. Yanagisawa and Ikuyo Yanagisawa

\$500 and above
Diane and Arthur Abbey
Dr. Jerome B. Anderson
Julie Azuma
Mr. Stephen D. Bloom
Ms. Jessica Cárdenas
Mr. John A. Crawford
Mr. Richard A. Debs
Mr. Michael Dunn
Abigail and Rick Elbaum c/o EBA Foundation
Mr. Philip Elenko
Kay Enokido and Tom Crouse

Ms. Kanako Funaki
Dr. John K. Gillespie
Kevin J. Hanratty
James and Yasuko Harris
Ms. Tracey Hecht
Dr. and Mrs. Thomas Heffner
Mac Jeffery and Maki Takano
Kiyomi S. Kouba
Ichun Lai
John Lipsky and Zsuzsanna Karasz
Edward Mafoud
Dr. Nancy C. Maruyama
Nancy Matsumoto and Grant Vingoe
Mr. Jerrod Morgan
Dr. and Mrs. Robert A. Myers^M
Mr. Naoto Nakagawa
Joan and Junya Nakatsugawa
Dr. Teruko S. Neuwalder
Mr. John N. Park
Ms. Pam A. Parker
Thierry Porté and Yasko Tashiro
Mr. Takaki Sakai^M
Mr. Henry Schulte
Mr. Ali Shariat
Mr. Leonard I. Solondz
Ms. Phyllisina Vinson
Alex York
Kumiko Yoshii
Ivan Zimmerman and Taryn Higashi

Japan Society received matching gifts from the following companies

during the 2019-2020 Program Season:

Archegos Capital Management, LP
Bloomberg
Google Inc.
IBM Corporation
Johnson & Johnson
Kingdon Capital Management, LLC
MasterCard Worldwide
MUFG (Mitsubishi UFJ Financial Group)
Texas Instruments Incorporated
Thomson Reuters

*In memoriam

Special Series & Initiatives

K3 Council
This initiative was supported by Mr. Philip M. Darivoff/ Vibrant Capital Partners, Inc.; Dr. Garry Rayant and Dr. Kathy Fields; Siris Capital Group, LLC; Diane and Marc Spilker; and an anonymous donor.

Remembering 3.11
Resiliency & Recovery: A U.S.-Japan Dialogue Ten Years after 3.11 was supported by Japan Society's Japan Earthquake Relief Fund (JERF) through a grant to ETIC., and was held in partnership with Tohoku-based organizations including the Tohoku Leaders Conference and Michinoku Fukko Regional Design Center.

Tea Time
Season #2 was supported by ITO EN (North America) INC.
Season #3 was supported by Tokio Marine Group and ITO EN (North America) INC.

Business & Policy

The season was sponsored by Global Leaders Citi and Deloitte; and by Corporate Partners Mizuho Americas and Toyota.

Additional support was provided by: The Japan Foundation Center for Global Partnership, Government of Japan, the National Association of Japan-America Societies, Inc., Sumitomo Mitsui Banking Corporation, and Finsbury Glover Hering.

Program co-organizers and outreach partners were: Asia Society Policy Institute; APEC Study Center at Columbia University; Center on Japanese Economy and Business at Columbia Business School; School of International and Public Affairs at Columbia University; The Korea Society; U.S.-Japan Business Council; Sumitomo Mitsui Banking Corporation; Paul Hastings; and IBM.

Education & Family

Education and Family Programs were generously supported by an anonymous donor; public funds from the New York City Department of Cultural Affairs in partnership with the City Council; The Masako Mera and Koichi Mera, PhD Fund for Education and the Arts; and The Norinchukin Foundation.

The Japan Society Japanese for Kids program was generously supported by a Special Covid Relief Grant for Teaching Materials from The Japan Foundation, Los Angeles.

The Japan Society Junior Fellows Leadership program was supported by generous grants from an anonymous family foundation, ITO EN (North America) INC., Mitsubishi Corporation (Americas), the Wendy Obernauer Foundation, THE TOKYO CLUB, Sony Corporation of America, The Norinchukin Foundation, and the Sojitz Foundation. Transportation assistance was provided by All Nippon Airways Co., Ltd.

Film

The season was generously supported by public funds from the New York City Department of Cultural Affairs in partnership with the City Council and the Lila Wallace-Reader's Digest Endowment Fund. Additional season support was provided by the NYC COVID-19 Response and Impact Fund in The New York Community Trust, The Globus Family, Masako H. Shinn, David Toberisky, Akiko Koide and Shohei Koide, Geoff and Fumi Matters, Laurel Gonsalves, David S. Howe, and Masu Hiroshi Masuyama. Transportation assistance was provided by Japan Airlines, the exclusive Japanese airline sponsor of Japan Society Film.

JAPAN CUTS was sponsored by Shiseido, with additional support provided by Sapporo U.S.A., Inc.

21st Century Japan: Films from 2001-2020 was co-presented with the Agency for Cultural Affairs in collaboration with Visual Industry Promotion Organization.

Gallery

Exhibitions and Arts & Culture Lecture Programs at Japan Society were made possible, in part, by the Lila Wallace-Reader's Digest Endowment Fund; the Mary Griggs Burke Endowment Fund established by the Mary Livingston Griggs and Mary Griggs Burke Foundation; The Masako Mera and Koichi Mera, PhD Fund for Education and the Arts; Masako H. Shinn; Peggy and Dick Danziger; Raphael and Jane Bernstein; Friends of the Gallery; and an anonymous donor. *From Here To There* was supported, in part, by the NYC COVID-19 Response and Impact Fund in The New York Community Trust.

When Practice Becomes Form: Carpentry Tools from Japan was supported by Takenaka Carpentry Tools Museum, Japan; TAKENAKA CORPORATION, and the E. Rhodes and Leona B. Carpenter Foundation. This exhibition was made possible, in part, by public funds from the New York City Department of Cultural Affairs in partnership with the City Council and the New York State Council on the Arts with the support of the Office of the Governor and the New York State Legislature.

Performing Arts

The season was sponsored by Lead Sponsor MetLife Foundation and Corporate Partner Orix Corporation USA. The season was made possible, in part, by public funds from the New York City Department of Cultural Affairs in partnership with the City Council and the New York State Council on the Arts with the support of the Office of the Governor and the New York State Legislature. Major Support was generously provided by Doug and Teresa Peterson and The Fan Fox and Leslie R. Samuels Foundation, Inc., with endowment support from the Lila Wallace-Reader's

Digest Endowment Fund and the Endowment for the Performing Arts, established with a leadership gift from the Doris Duke Charitable Foundation. Additional support was provided by Helen and Kenneth A. Cowin, Dr. and Mrs. Carl F. Taeusch II, Mr. Alan M. Suhonen*, The Royal Little Family Foundation, Sarah Billingham Solomon and Howard Solomon, Dr. Stephen and Mrs. Michiko Levine, Marjorie Neuwirth, Hiroko Onoyama, Lyndley and Samuel Schwab, Dean Jeanette C. Takamura, and Nancy and Joe Walker. Transportation assistance was provided by All Nippon Airways Co., Ltd.

* In memoriam.

Reiko Yamada: Sound Installation on Silent Movies was supported by Doug and Teresa Peterson.

Underground Fairy was supported by The Saison Foundation and Doug and Teresa Peterson.

Ludic Proxy: Fukushima was originally commissioned by PlayCo, premiered at Walker Space in April 2015 and was developed as part of Lower Manhattan Cultural Council's Process Space, Swing Space and Workspace program. This program was supported by Doug and Teresa Peterson, and NYSCA-A.R.T./New York Creative Opportunity Fund (A Statewide Theatre Regrant Program).

Japan X Taiwan: Choreographers Respond to COVID-19 was supported, in part, by The Taipei Cultural Center of TECO in New York and The Harkness Foundation for Dance, and produced in Japan by NPO Kaibunsha. Thanks to Ryogoku BEAR for studio support in Japan and HORSE 麿舞劇場 for studio support in Taiwan.

Shomyo: Buddhist Ritual Chant—Moonlight Mantra (Tsuki no Kogon) was supported by The JEO Fund, Doug and Teresa Peterson, and The Asahi Shimbun Foundation. The University of Chicago Presents' co-presentation was supported by the National Endowment for the Arts, Center for East Asian Studies Title VI Grant from the U.S. Department of Education, International House at The University of Chicago, and Rockefeller Memorial Chapel. This video production was produced by the Agency of Cultural Affairs, Government of Japan, as part of its Project of Cultural Economy Enhancement, and NPO Kaibunsha.

The Virtual Reality (VR) production of *The Dark Master* premiered at Tokyo Metropolitan Theatre as part of Tokyo Festival 2020. This program was supported, in part, by the Agency for Cultural Affairs, Government of Japan through the Japan Arts Council, Arts Council Tokyo (Tokyo Metropolitan Foundation for History and Culture), and Doug and Teresa Peterson

Talks+

The season was generously sponsored by MUFG (Mitsubishi UFJ Financial Group). Additional support was provided by an anonymous donor, the Sandy Heck Lecture Fund, and Helen and Kenneth A. Cowin. *The Food Talk* series was sponsored by Kikkoman Corporation.

The Get to Know Japan Series: Kanagawa was co-organized by Kanagawa Prefectural Government. *Artificial Elegance: Japanese Prosthetics for World-Class Athletes* was supported, in part, by the Japan-United States Friendship Commission as part of the institution-wide *Passing the Torch Series*, and with support from the NYC COVID-19 Response and Impact Fund in The New York Community Trust. *Tasty Creations: Vegan Sushi* was supported, in part, by the NYC COVID-19 Response and Impact Fund in The New York Community Trust. *Painting Edo: Early Modern Masterworks from the Feinberg Collection*, part of the *Richard J. Wood Art Curator Series*, was supported, in part, by an award from the National Association of Japan America Societies with funds from the Japan-United States Friendship Commission and, in part, by support from the NYC COVID-19 Response and Impact Fund in The New York Community Trust. *Sustainable Foods: A Mottainai Mindset* was sponsored by Mizkan Holdings Co., Ltd. *Annual Sake Event: Brewers Share Their Insider Stories* was co-organized by the Sake Export Association.

Toyota Language Center

Support for Japan Society's Toyota Language Center was provided, in part, by the NYC COVID-19 Response and Impact Fund in The New York Community Trust; Mark F. Goldfield and Mary E. Hatch; Christopher Hong; Steven Giordano; Juan Ruiz Gomez; a Special Covid Relief Grant for Teaching Materials from The Japan Foundation, Los Angeles; Frederick H. Katayama; and Dr. Bic Kanayjorn.

The *Nihongo Chat + J -Culture* series was presented in partnership with New York University, Hunter College, Baruch College, and LaGuardia Community College. This program was generously supported by The Japan Foundation, Los Angeles.

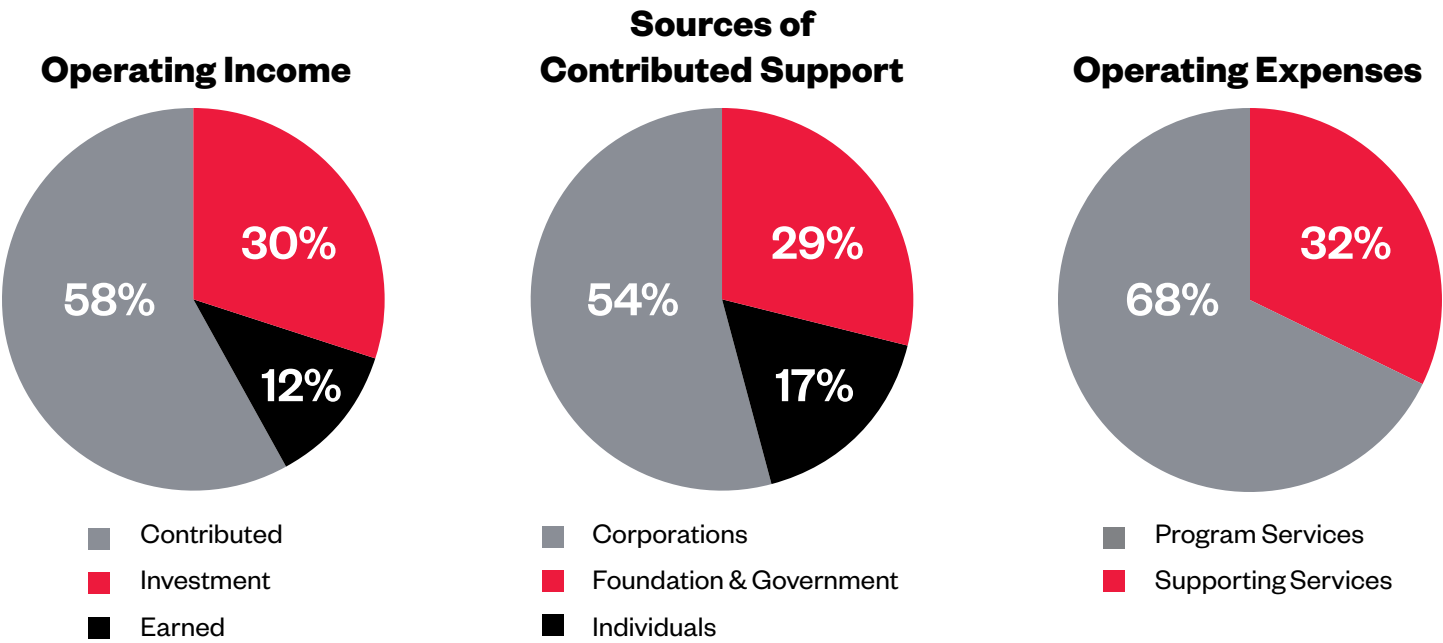


CONSOLIDATED STATEMENT OF ACTIVITIES

SUPPORT AND REVENUE	NET ASSETS WITHOUT DONOR RESTRICTIONS			NET ASSETS WITH DONOR RESTRICTIONS	TOTAL 2021	TOTAL 2020
	OPERATING	BOARD DESIGNATED	TOTAL			
Contributions, grants and membership	\$2,614,042	—	\$2,614,042	\$1,712,669	\$4,326,711	\$4,608,339
Revenue from functions and activities	1,228,187	—	1,228,187	—	1,228,187	1,796,611
Allocated investment return	2,976,450	—	2,976,450	—	2,976,450	3,087,052
Operating investment return (loss)	5,271	—	5,271	—	5,271	(9,228)
Special events, net of direct expenses	1,171,704	—	1,171,704	—	1,171,704	988,931
Net assets released from restrictions	2,021,115	—	2,021,115	(2,021,115)	—	—
Total support and revenue	10,016,769	—	10,016,769	(308,446)	9,708,323	10,471,705
OPERATING EXPENSES						
Program services						
Talks+	332,106	—	332,106	—	332,106	302,776
Business & Policy	669,136	—	669,136	—	669,136	526,500
Innovators Network	—	—	—	—	—	290,000
Membership	354,961	—	354,961	—	354,961	256,014
Film	379,559	—	379,559	—	379,559	416,864
Performing Arts	945,556	—	945,556	—	945,556	1,444,341
Gallery	1,236,631	—	1,236,631	—	1,236,631	1,686,658
Media & Marketing	1,267,408	—	1,267,408	—	1,267,408	1,003,153
Language Center	985,237	—	985,237	—	985,237	954,026
Education	370,732	—	370,732	—	370,732	467,174
Japan Earthquake Relief Fund	304,500	—	304,500	—	304,500	99,584
Total program services	6,845,826	—	6,845,826	—	6,845,826	7,447,090
Supporting activities						
General	2,383,089	—	2,383,089	—	2,383,089	3,541,612
Development	831,436	—	831,436	—	831,436	881,283
Total supporting activities	3,214,525	—	3,214,525	—	3,214,525	4,422,895
Total expenses	10,060,351	—	10,060,351	—	10,060,351	11,869,985
(Deficiency) of revenue over expenses from operations before non-operating revenue	(43,582)	—	(43,582)	(308,446)	(352,028)	(1,398,280)
Non-operating revenue						
Total investment return, net of allocation to operations	3,017,682	1,895,659	4,913,341	11,391,825	16,305,166	(1,073,662)
Increase (decrease) in net assets	2,974,100	1,895,659	4,869,759	11,083,379	15,953,138	(2,471,942)
Net assets, beginning of the year	8,420,814	7,709,801	16,130,615	57,763,645	73,894,260	76,366,202
Net assets, end of year	\$11,394,914	\$9,605,460	\$21,000,374	\$68,847,024	\$89,847,398	\$73,894,260

CONSOLIDATED STATEMENT OF FINANCIAL POSITION

		JUNE 30, 2021	JUNE 30, 2020
ASSETS	Cash and cash equivalents	\$2,701,244	\$2,016,572
	Cash designated for Japan Earthquake Relief Fund	100,384	390,302
	Investments, at fair value	81,882,888	65,469,115
	Receivables and other assets	453,247	707,874
	Due from investment manager	4,023	—
	Land, building and equipment, net	6,635,046	7,051,304
Total assets		\$91,776,832	\$75,635,167
LIABILITIES AND NET ASSETS	Liabilities		
	Accounts payable and accrued expenses	\$751,877	\$ 597,837
	Deferred membership revenue	274,357	239,870
	Loan payable	903,200	903,200
	Total liabilities	1,929,434	1,740,907
	Net assets		
	Net assets without donor restrictions		
	Operating	11,394,914	8,420,814
	Board-designated	9,605,460	7,709,801
	Total without donor restrictions	21,000,374	16,130,615
	Net assets with donor restrictions		
	Program restricted	21,598,423	10,565,044
	Endowment fund	47,248,601	47,198,601
	Total with donor restrictions	68,847,024	57,763,645
	Total net assets	89,847,398	73,894,260
Total liabilities and net assets		\$91,776,832	\$75,635,167



IN MEMORIAM

Dr. Gunhild Avitabile, scholar, curator and Director of Japan Society Gallery, 1990—1998.

Eleni Cocordas, Executive Director, Agora Gallery, and former Registrar and Interim Director, Japan Society Gallery, 2001—2006.

Minoru Makihara, former Japan Society Board Member and President of Mitsubishi Corp. A pioneer in U.S.-Japan relations and a prominent figure in international business circles, he was the recipient of the 2013 Japan Society Award for his numerous outstanding contributions to his field.

Ryuichi Kaneko, Japanese photography specialist and curator at the Tokyo Metropolitan Museum of Photography; contributor to the exhibition catalogue *For a New World to Come: Experiments in Japanese Art and Photography from 1968—1979*.

Devin Stewart, Opinion Editor at the *Japan Times* and Japan Society Senior Director of Corporate, Policy and Lecture Programs, 2010—2012.

Sakata Toju, legendary kabuki actor and Living National Treasure, who performed at Japan Society's Centennial Gala in 2007.

Ezra Vogel, the scholarly giant in East Asian Studies who mentored generations of leaders and scholars at Harvard, longtime Japan Society Board Member and recipient of the 1998 Japan Society Award for better U.S.-Japan understanding. Renowned for his pathbreaking scholarship in exploring the rise of Japan and China as global superpowers, Dr. Vogel made lasting contributions to better American understanding of East Asia, enlightened U.S. foreign policy, and worked ceaselessly to strengthen partnerships across the Pacific.

Walter F. Mondale, Vice President under Jimmy Carter, U.S. Senator, U.S. Ambassador to Japan under Bill Clinton, presidential candidate in 1984, and Japan Society Board Member, 1997—2003. He fundamentally improved the foundation on which our nation is built by creating new paths for women and minorities, with integrity and optimism.



We also mourn the loss of other friends and supporters of Japan Society. Their generosity and friendship will always be remembered.

MEIRA FUND



New Endowment Fund: The Masako Mera and Koichi Mera, PhD Fund for Education and the Arts

In the summer of 2021, Japan Society was fortunate to receive significant support from the family of Masako and Koichi Mera, PhD, to establish their eponymous fund for education and art. A leadership gift by their children—Yumi Kuwana, Yuhka Mera and Eiki Mera—created the endowment to further Japan Society's capacity to enable student exchanges between the U.S. and Japan, as well showcase artists and sculpture for Society exhibits.

Masako Mera was a talented and spirited soul who was involved in sculpture, design, music and cooking. Among other things, Ms. Mera chaired the American Association of Japan University scholarship selection committee. Her husband, Dr. Koichi Mera, held degrees from the University of Tokyo and Harvard University. He was an intellect, independent thinker and author of numerous books.

The Mera's love for their family and their culture is memorialized through this generous endowment, allowing the Society to further strengthen the U.S.-Japan bridge while serving as a living tribute to their combined love for the U.S. and Japan.

REACH

Online Visitors, Fans, Followers & Subscribers

As of June 30, 2021



288,885 Facebook fans/likes
facebook.com/japansociety



83,211 Twitter followers
twitter.com/japansociety



32,879 Instagram followers
instagram.com/japansociety



5,826,630 YouTube video views (in the past year)
53,262,573 lifetime views
53,434 new subscribers (in the past year)
youtube.com/japansocietynyc



21,763 LinkedIn followers
linkedin.com/company/japan-society



36,343 unique visitors per month
japansociety.org

STAFF

EXECUTIVE OFFICE

Joshua W. Walker, Ph.D.
President & CEO

Erina Aoyama
Chief of Staff

Media & Marketing

Michele Debrececi
Director, Media & Marketing

Allison Rodman
Director, Communications

Malena Seldin
Manager, Graphic Design & Creative Strategy

Cynthia Sternau
Managing Editor

Ben Warren
Video & Creative Services Manager

Camille Miller
Marketing & Communications Associate

OPERATIONS & ADMINISTRATION

Lisa Bermudez
Executive Vice President

Andrew Connor
Chief Operating Officer

Finance

Vinka Cvenic
Senior Accountant

Human Resources

Tsay Huang
Payroll & Accounts Payable Manager

IT, BUILDING & HOUSE OPERATIONS

Information Technology

Robert Hardy
LAN Administrator

Julia Jin
Database Administrator

Building Services

John Agapito
Director, Building Services

Carlos Estrada
Porter

House Operations

Lydia Gulick
Director, Program Operations

Carmen Ben
Manager, House Activities

Olivia Kielczewski
Welcome Desk Associate

Nicole Kuchta
Welcome Desk Associate

DEVELOPMENT

Gregory Corsico
Chief Development Officer

Lisa Goldenberg
Senior Director, Development

Kimberly Woodward
Director, Development Operations & Board Relations

Nozomi Iizuka
Director, Corporate Partnerships

Kieran Callinan
Assistant Director, Corporate Partnerships

Mika Nagasaki
Director, Foundation & Government Relations

Allison Hall
Assistant Director, Foundation & Government Relations

Ann Niehoff
Development Officer

Caroline Saul
Assistant Director, Individual Giving & Membership

Michelle Wakabayashi
Assistant Director, Individual Giving & Membership

Nicholas Bianchi
Associate, Development Operations

PROGRAMS

Ramona Handel-Bajema, Ph.D.
Chief Program Officer

Business & Policy

Tomoko Okuno
Director, Business & Policy

Yuka Terada
Senior Program Officer, Business & Policy

Education & Family

Yumi Nagasawa, Ed.D.
Director, Education & Family Programs

Luke McGrath
Education Officer

Valerie Santelli
Education Associate

Film

K. F. Watanabe
Deputy Director, Film Program

Alexander Fee
Film Associate

Gallery

Yukie Kamiya
Director, Gallery

Tiffany Lambert
Assistant Curator

Daqian Cao
Exhibition Manager

Emi Marica
Gallery Associate

Language Center & Library

Tomoyo Kamimura
Director, Language Center & Library

Megan Brindle
Language Center Associate

Aya Wilson
Language Center Associate

Kimberly Campuzano
Language Center Assistant

Yuko Aizawa
Instructor

Megumi Barringer
Instructor

Keiko Hammer
Instructor

Yumiko Kakutani
Instructor

Momoyo Kitaura
Instructor

Kazue Kurahara
Instructor

Ben Milam
Instructor

Yumi Mori
Instructor

Mari Nakamura
Instructor

Sanshiroh Ogawa
Instructor

Mami Nakanishi Sheehy
Instructor

Kazuko Nakazawa
Instructor

Atsuko Shio
Instructor

Chikako Takahashi
Instructor

Shuichiro Takeda
Instructor

Yukie Yamaguchi
Instructor

Performing Arts

Yoko Shioya
Artistic Director

Futoshi Miyai
Director, Productions & Technical Management

Amanda Waddell
Performing Arts Officer & Contents Strategist

Yukako Yamazoe
Program Associate

Talks+

Tomomi Sekiya
Director, Talks+

Anna Cabasso
Program Officer, Talks+

PHOTO CREDITS:

Cover: 1969 drawing of Japan House—completed in 1971—by architect Junzo Yoshimura.

Page 7: © Zhen Qin.

Page 10: © George Hirose.

Page 16: *It's a Summer Film* © 2020 "It's a Summer Film" Production Committee.

Page 17: Top to bottom—*The Goldfish: Dreaming of the Sea* © 2021 TOEI VIDEO; *Wife of a Spy* © 2020 NHK, NEP, Incline, C&I; *Spaghetti Code Love* © All of Creation.

Page 19: Top, © Naho Kubota.

Pages 20-21: © Daphne Youree.

Page 26: Illustration by Ben Warren © Japan Society

Page 28: Left, © Zhen Qin.

Page 36: © Lily Kesselman.

Page 37: Courtesy of the Mera family.

All uncredited photos © Japan Society.